

123°34'W

123°33'W

123°32'W

Pony Fire

Heat Acres: 2,858

CA-KNF-004500

Infrared Interpretation

Imagery Date:
06/20/2016 0220 Hrs



1:20,000



41°38'N

41°37'N

41°36'N

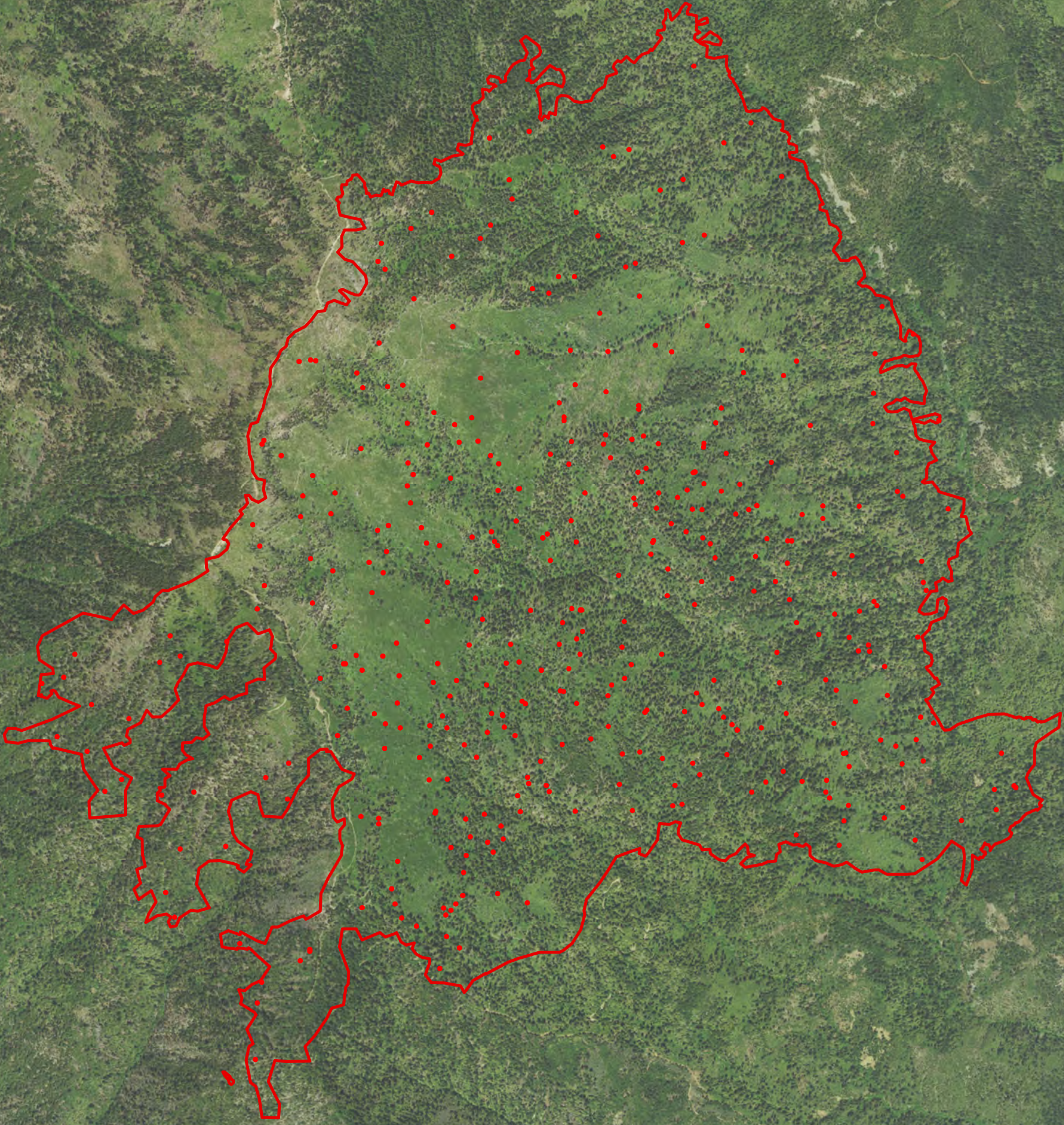
41°35'N

41°38'N

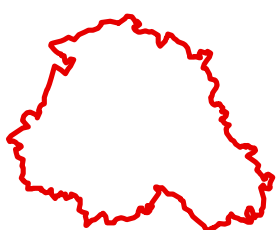
41°37'N

41°36'N

41°35'N



Dillon Fire
14.8 acres



Heat Perimeter



Isolated Heat Sources

NAD 1983 UTM Zone 10N

0 1,050 2,100 4,200



Feet

Map data provided by: GeoEye, Earthstar Geographics, CNES/Airbus DS, USDA, USGS, AEX, Getmapping, Aerogrid, IGN, IGP, swisstopo, and the GIS User Community

123°34'W

123°33'W

123°32'W