

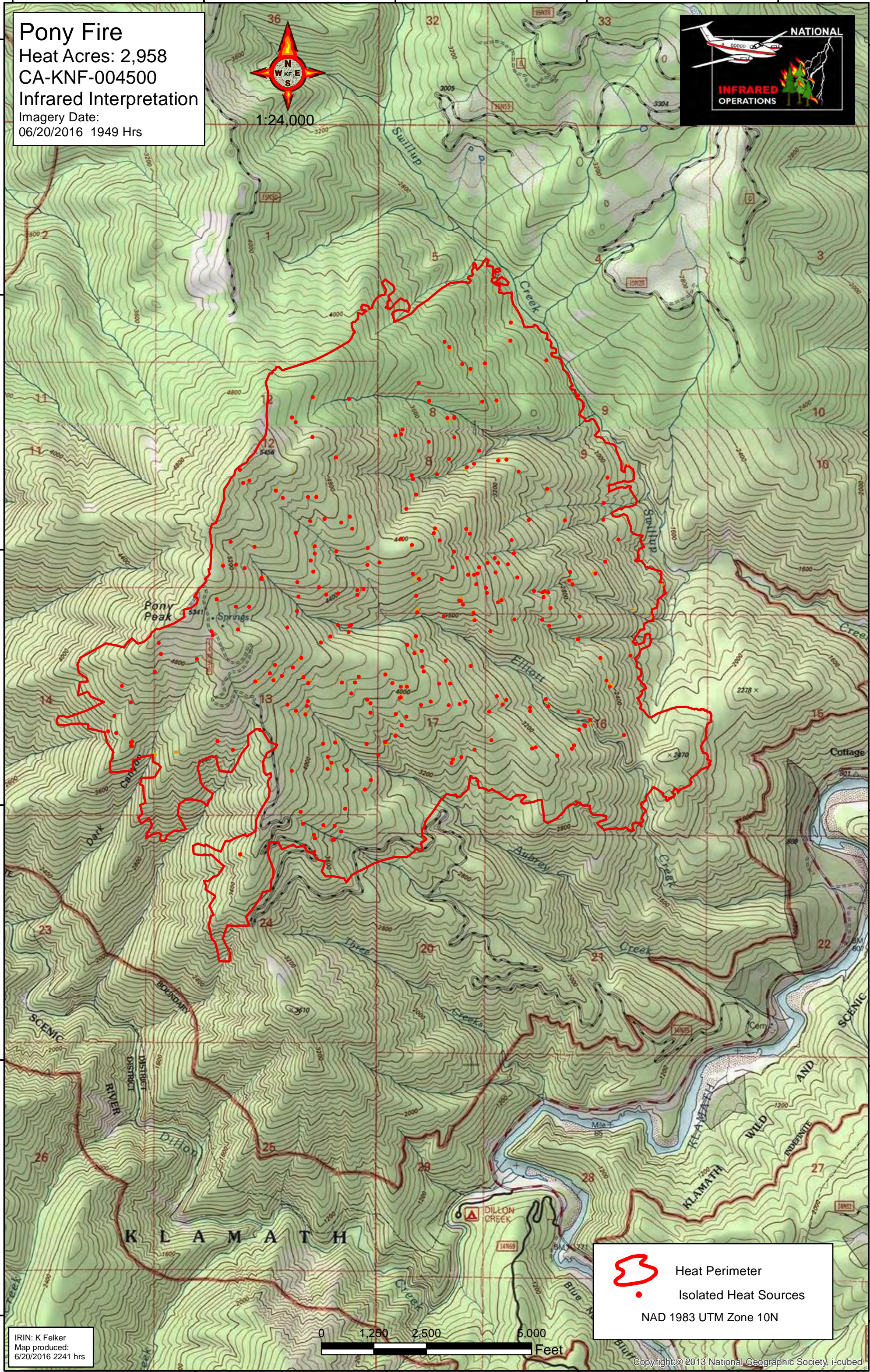
123°35'W 123°34'W 123°33'W 123°32'W 123°31'W



41°39'N 41°38'N 41°37'N 41°36'N 41°35'N 41°34'N

Pony Fire
Heat Acres: 2,958
CA-KNF-004500
Infrared Interpretation
Imagery Date:
06/20/2016 1949 Hrs



1:24,000



 Heat Perimeter
 Isolated Heat Sources
NAD 1983 UTM Zone 10N



IRIN: K Felker
Map produced:
6/20/2016 2241 hrs

123°34'W 123°33'W 123°32'W 123°31'W