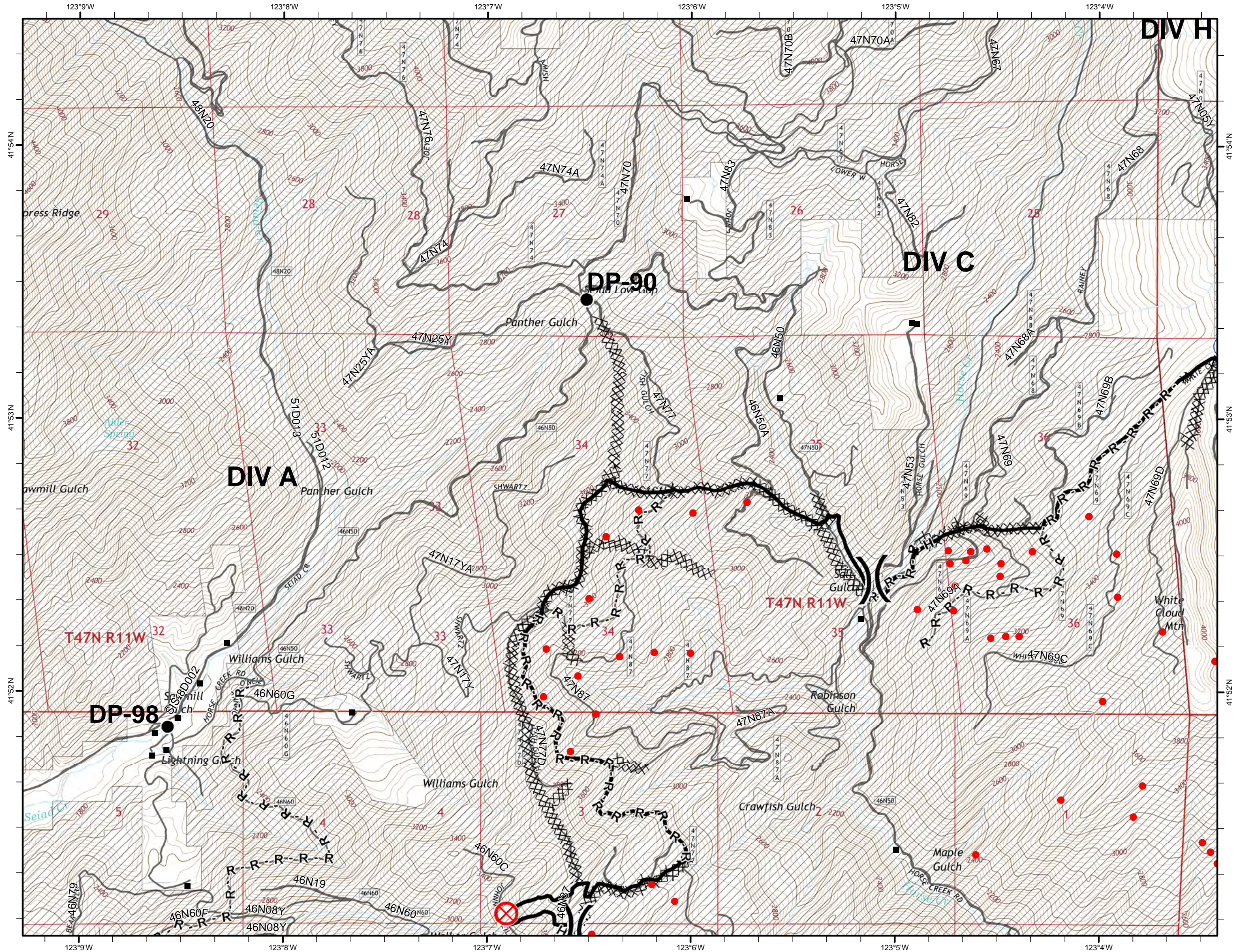
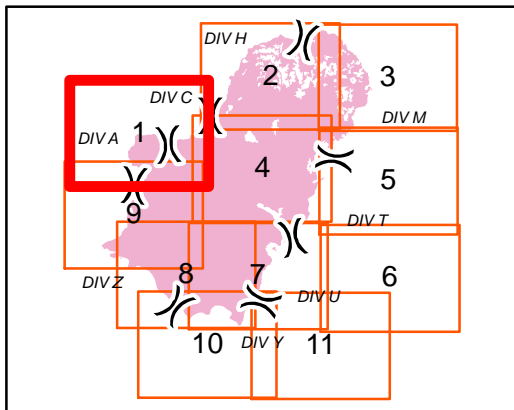


# IAP MAP

GAP FIRE  
CA-KNF-007501  
SEPTEMBER 12, 2016  
32,224 ACRES  
IR FLIGHT 9/9 @ 2157 HRS.  
PAGE 1 OF 11



- XXXX Completed Dozer Line
- Completed Line
- H - Hand Line
- R - Road as Completed Line
- Drop Point
- ⊗ Fire Origin
- ⊕ Water Source
- ) Division
- Isolated Heat Source
- Structure
- ▨ USDA FOREST SERVICE



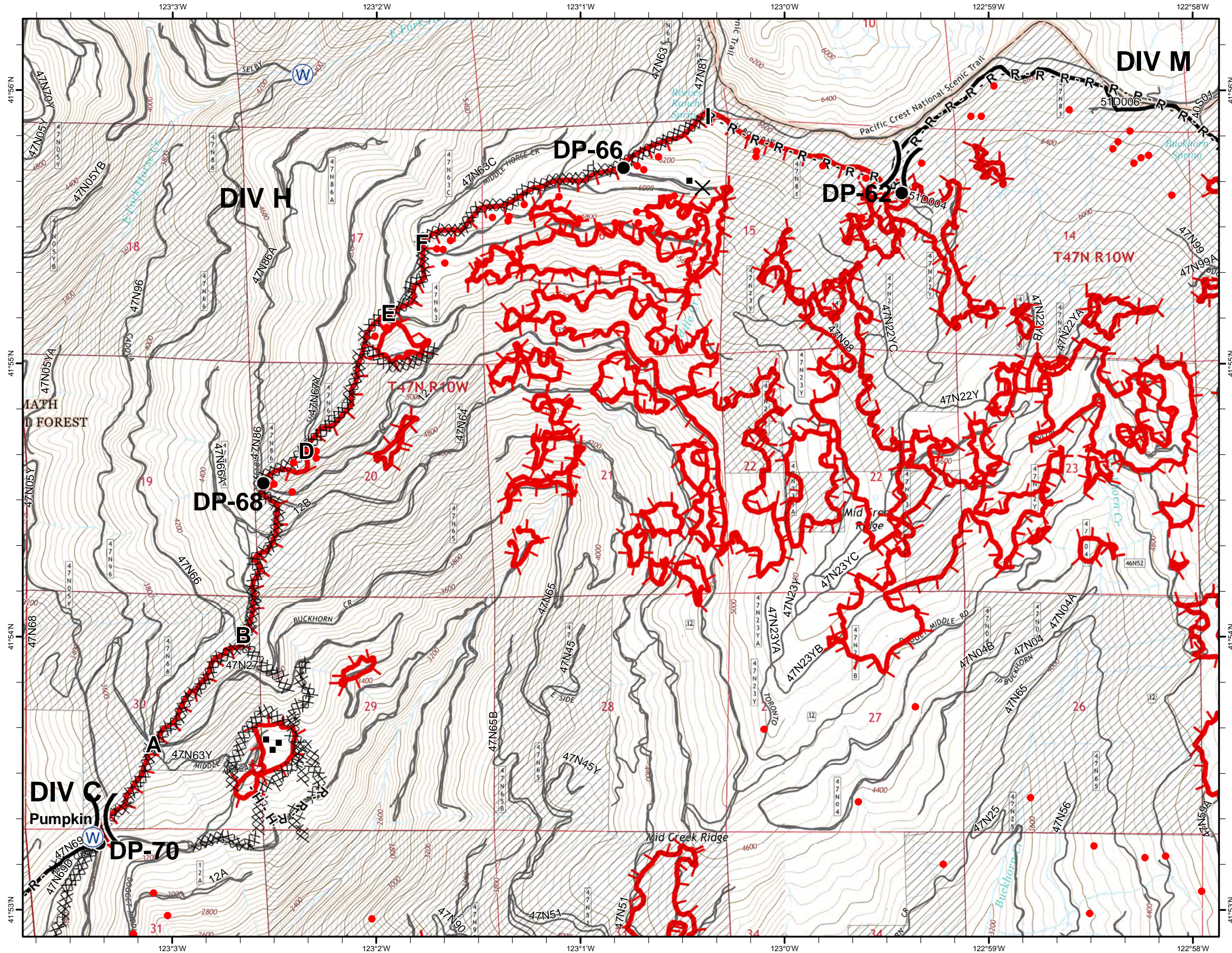
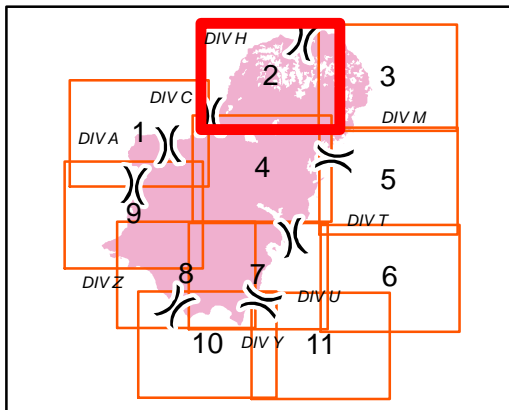


# IAP MAP

GAP FIRE  
CA-KNF-007501  
SEPTEMBER 12, 2016  
32,224 ACRES  
IR FLIGHT 9/9 @ 2157 HRS.  
PAGE 2 OF 11



- Uncontrolled Fire Edge
- Completed Dozer Line
- Completed Line
- Hand Line
- Road as Completed Line
- Drop Point
- Water Source
- Division
- Isolated Heat Source
- Structure
- USDA FOREST SERVICE



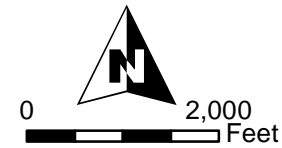
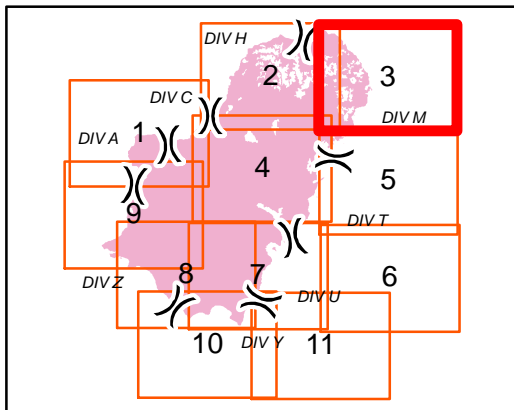


# IAP MAP

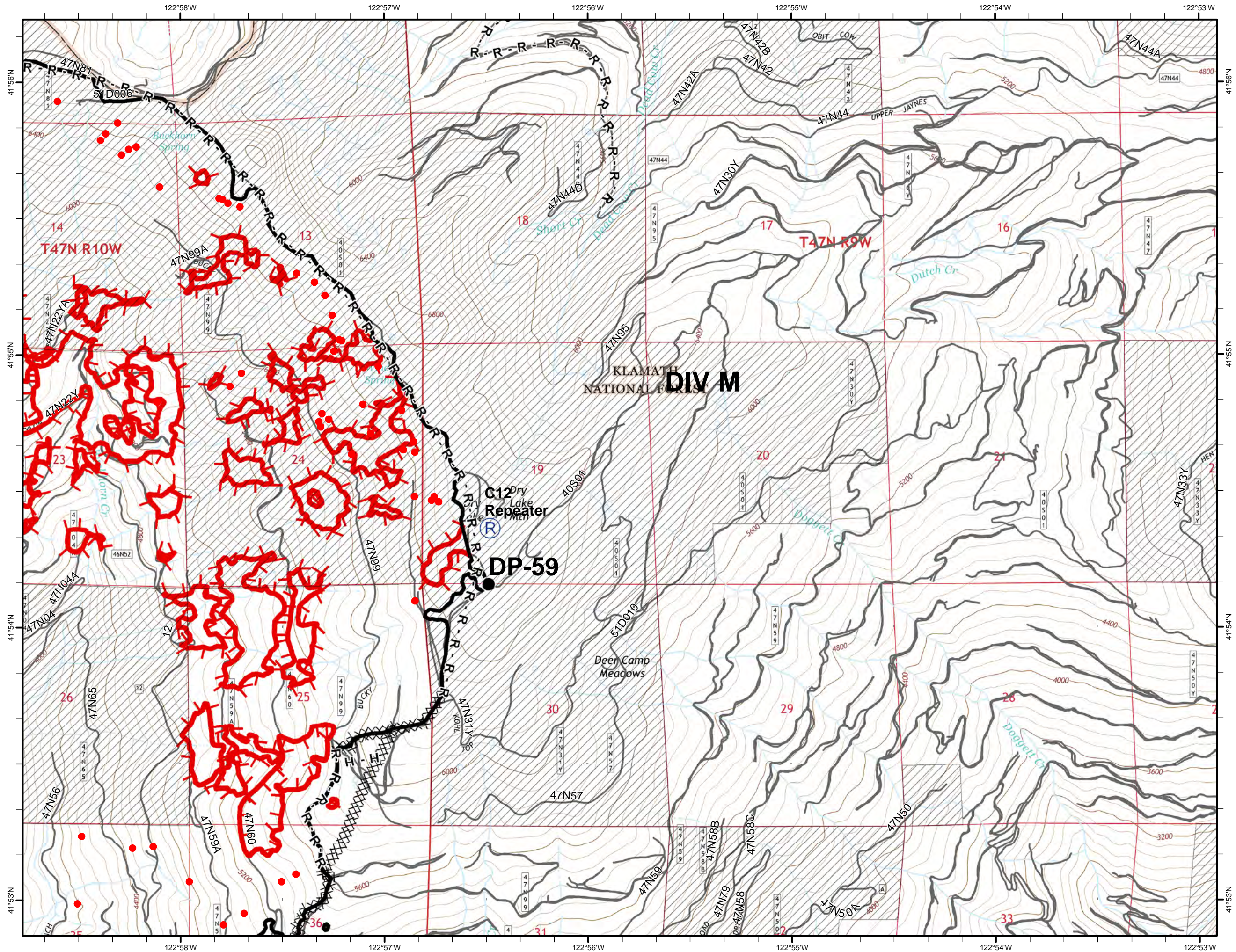
GAP FIRE  
CA-KNF-007501  
SEPTEMBER 12, 2016  
32,224 ACRES  
IR FLIGHT 9/9 @ 2157 HRS.  
PAGE 3 OF 11



- Uncontrolled Fire Edge
- Completed Dozer Line
- Completed Line
- Hand Line
- Road as Completed Line
- Drop Point
- Repeater
- Division
- Isolated Heat Source
- USDA FOREST SERVICE



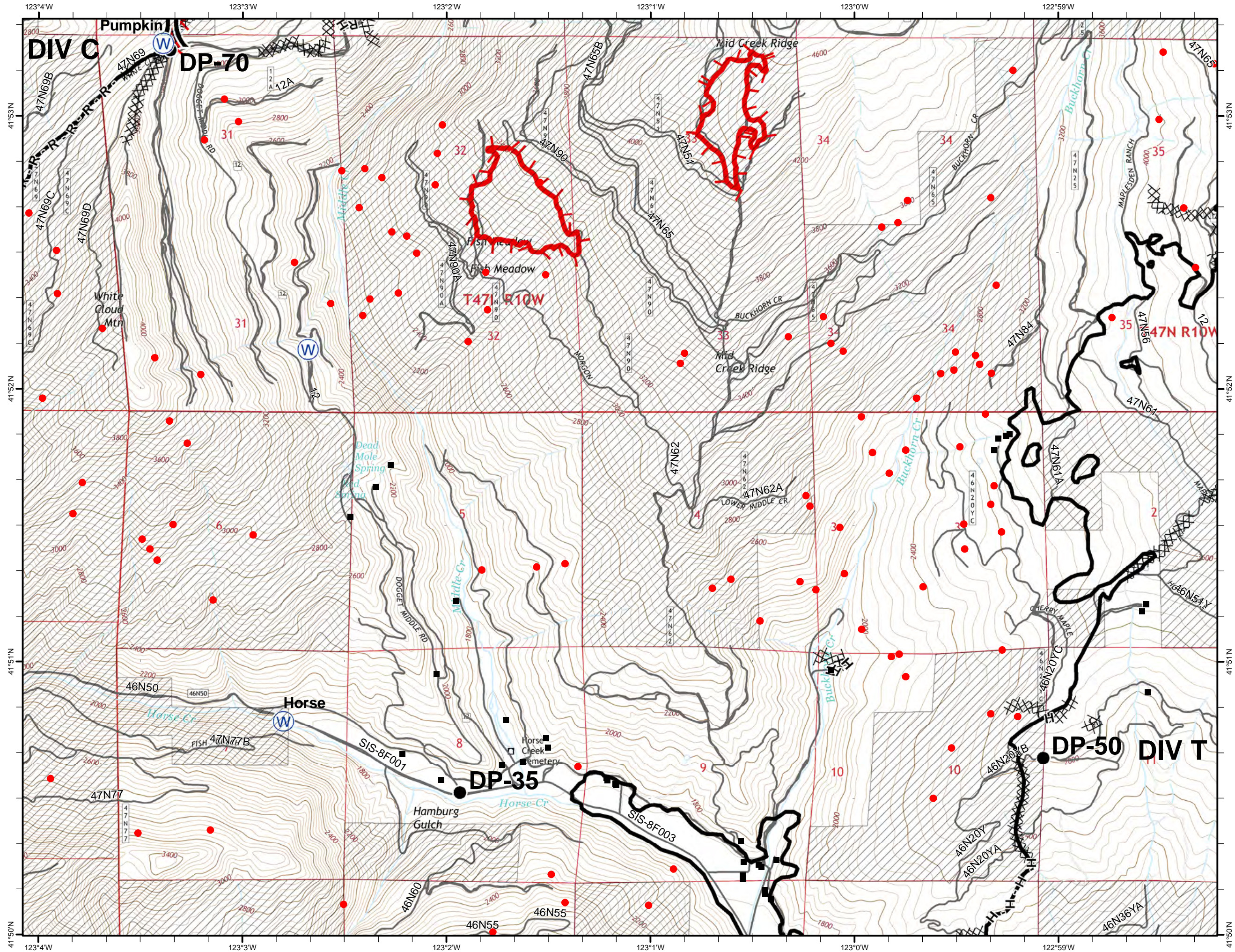
Map Datum: Nad 83 UTM Zone 10



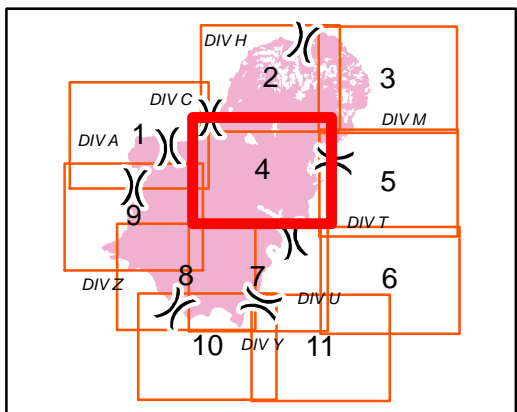


# IAP MAP

GAP FIRE  
 CA-KNF-007501  
 SEPTEMBER 12, 2016  
 32,224 ACRES  
 IR FLIGHT 9/9 @ 2157 HRS.  
 PAGE 4 OF 11



- Uncontrolled Fire Edge
- Completed Dozer Line
- Completed Line
- Hand Line
- Road as Completed Line
- Drop Point
- Water Source
- Division
- Isolated Heat Source
- Structure
- USDA FOREST SERVICE



Map Datum: Nad 83 UTM Zone 10



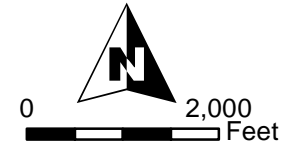
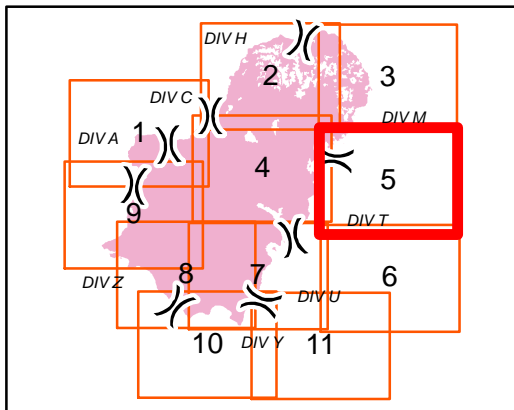


# IAP MAP

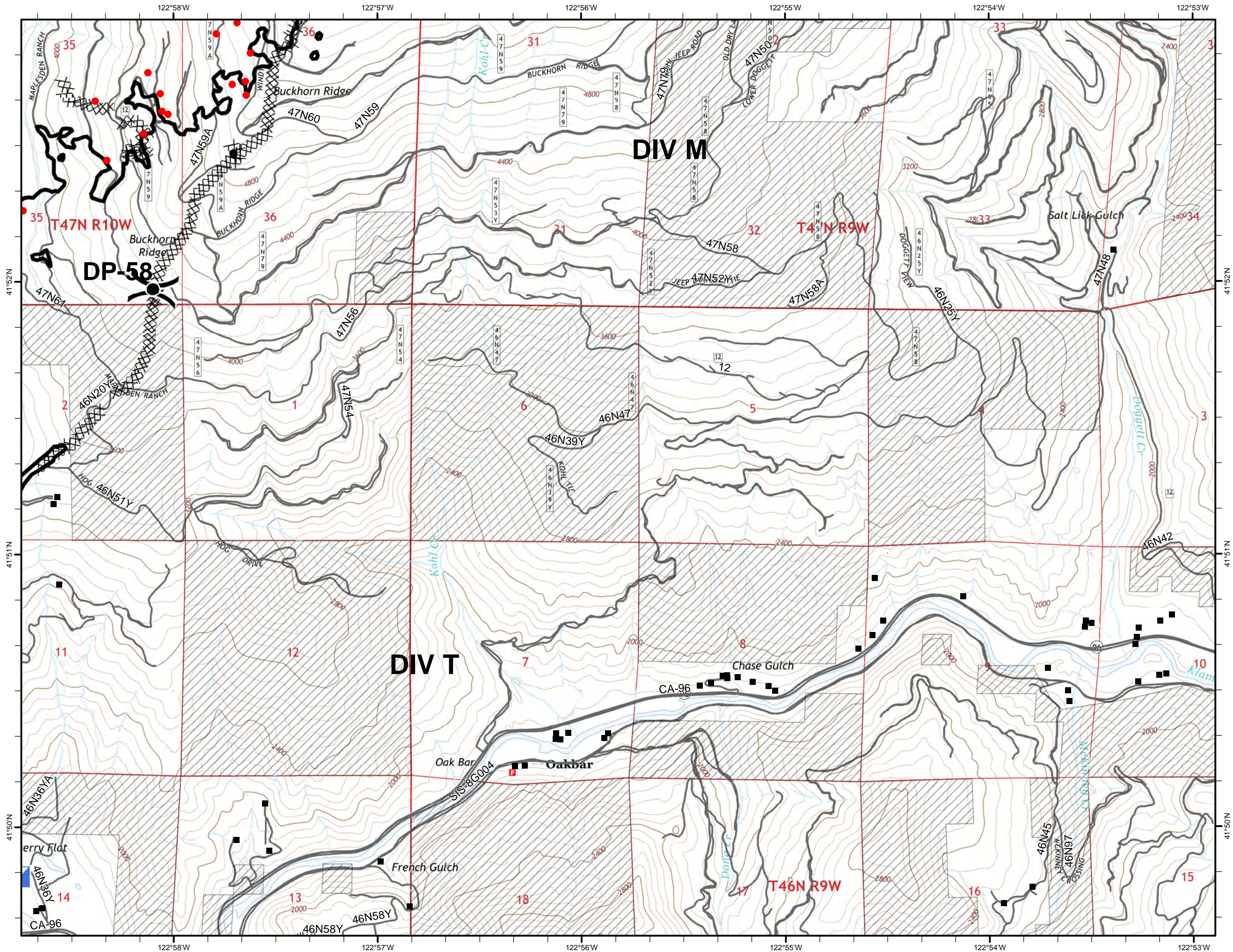
GAP FIRE  
CA-KNF-007501  
SEPTEMBER 12, 2016  
32,224 ACRES  
IR FLIGHT 9/9 @ 2157 HRS.  
PAGE 5 OF 11



- XXXX Completed Dozer Line
- Completed Line
- Drop Point
- ▣ Incident Command Post
- ) Division
- Isolated Heat Source
- Structure
- ▨ USDA FOREST SERVICE



Map Datum: Nad 83 UTM Zone 10



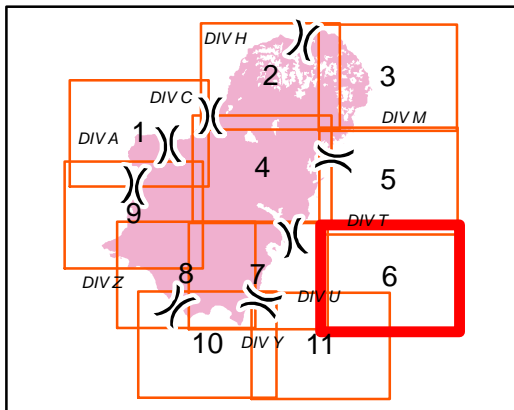


# IAP MAP

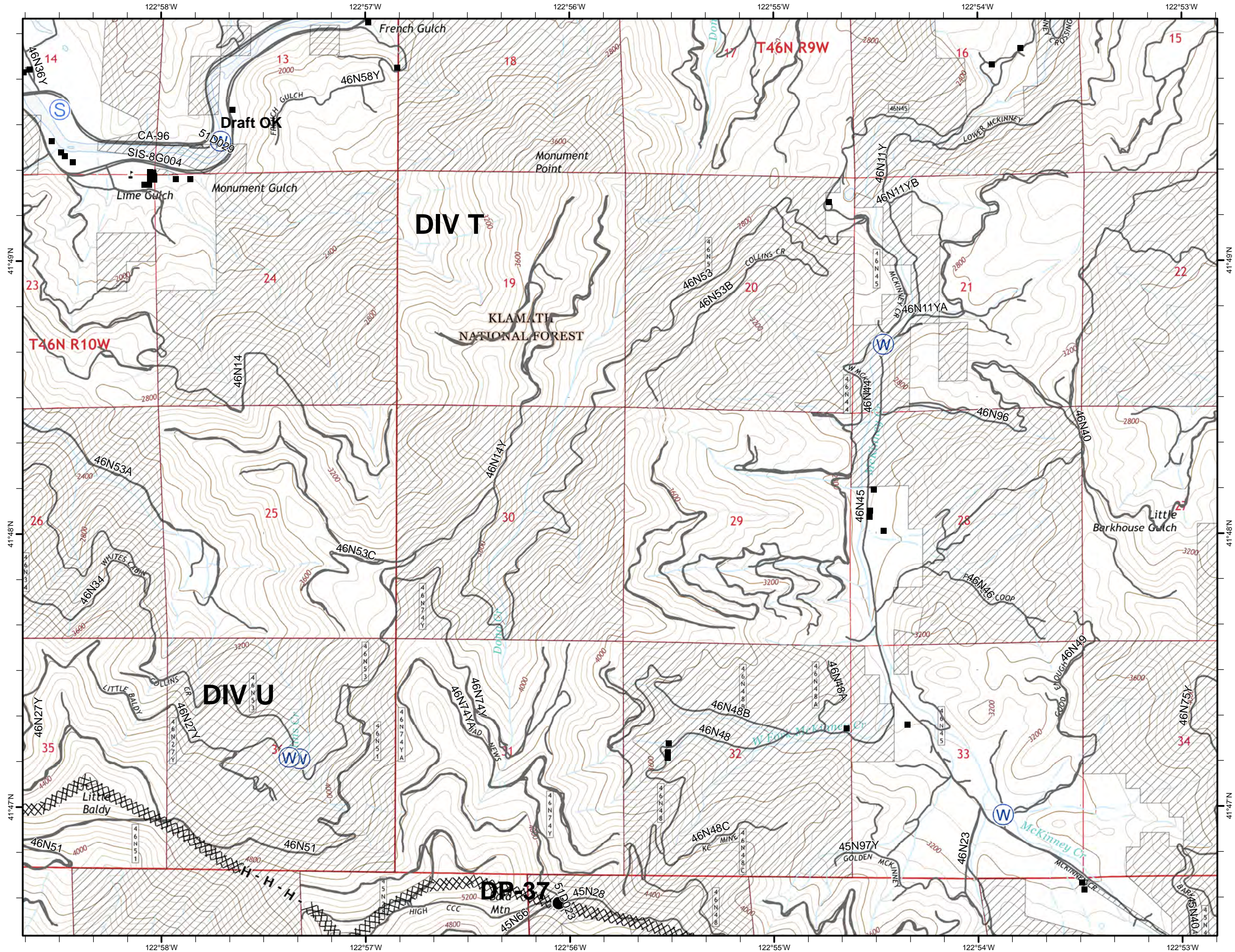
GAP FIRE  
CA-KNF-007501  
SEPTEMBER 12, 2016  
32,224 ACRES  
IR FLIGHT 9/9 @ 2157 HRS.  
PAGE 6 OF 11



- XXXX Completed Dozer Line
- H - Hand Line
- Drop Point
- S Staging Area
- W Water Source
- ) Division
- Structure
- USDA FOREST SERVICE



0 2,000 Feet  
Map Datum: Nad 83 UTM Zone 10



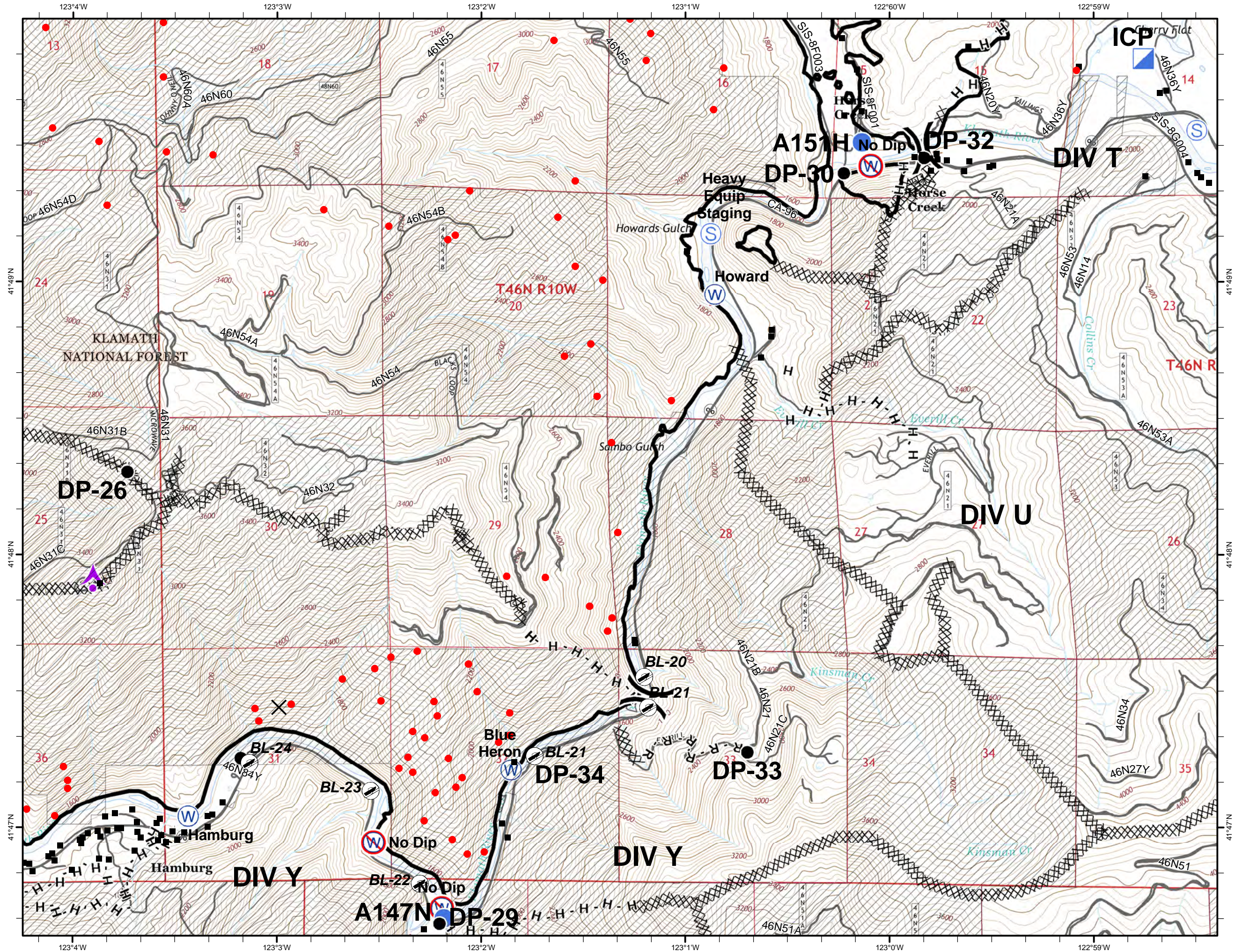
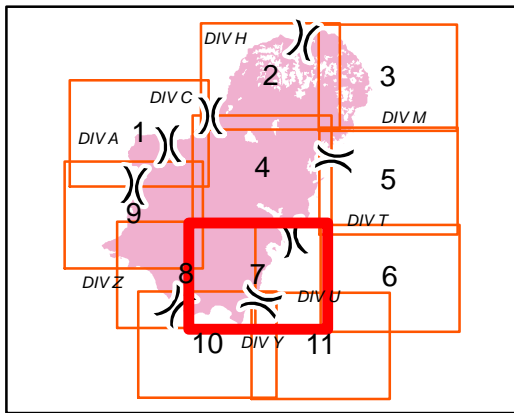


# IAP MAP

GAP FIRE  
 CA-KNF-007501  
 SEPTEMBER 12, 2016  
 32,224 ACRES  
 IR FLIGHT 9/9 @ 2157 HRS.  
 PAGE 7 OF 11



- XXXX Completed Dozer Line
- Completed Line
- H - Hand Line
- R - Road as Completed Line
- Aerial Hazard
- Drop Point
- Helispot
- Incident Command Post
- Staging Area
- Water Source
- Restricted Water Source
- Division
- Isolated Heat Source
- Boat launch
- Structure
- USDA FOREST SERVICE



0 2,000 Feet  
 Map Datum: Nad 83 UTM Zone 10

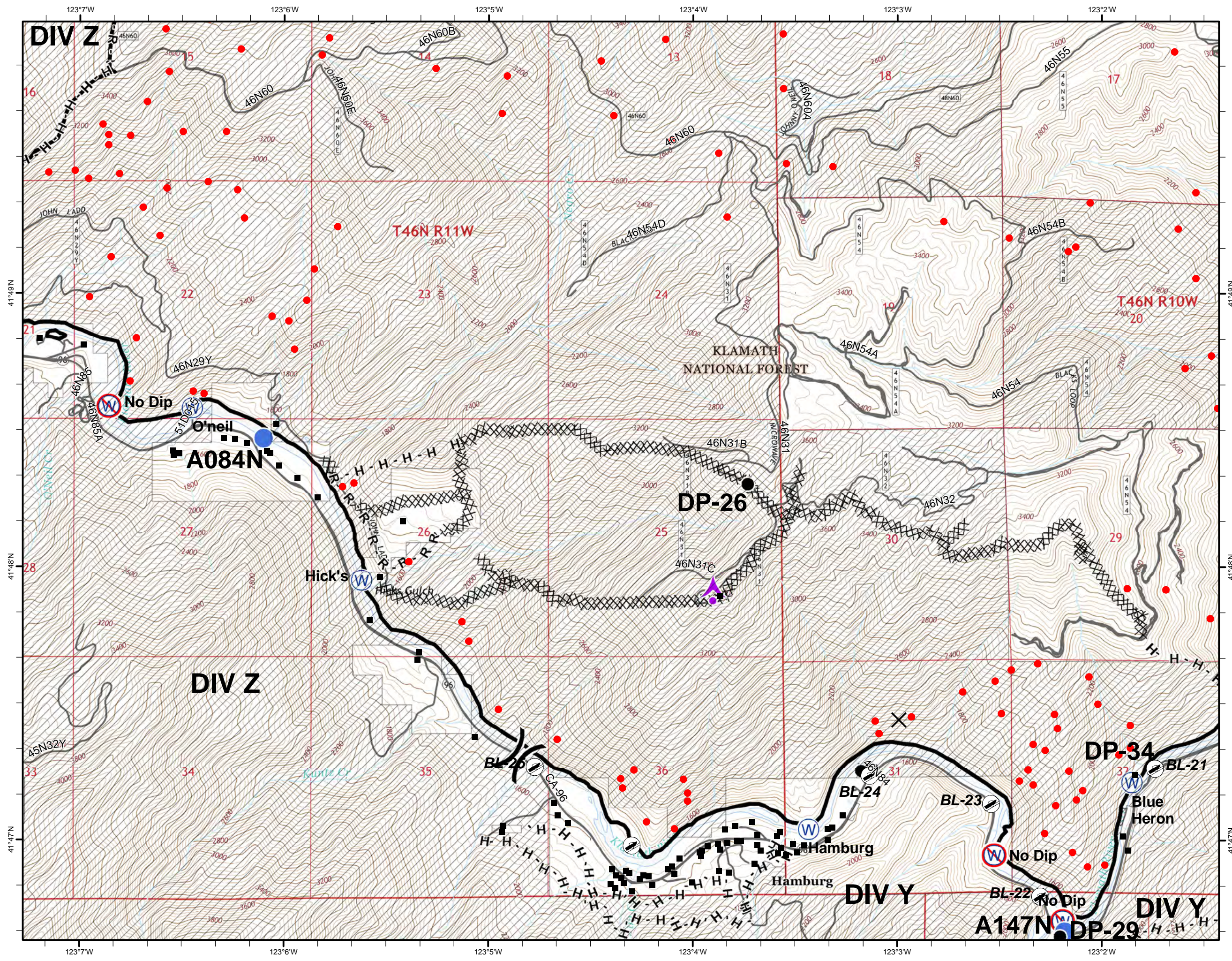
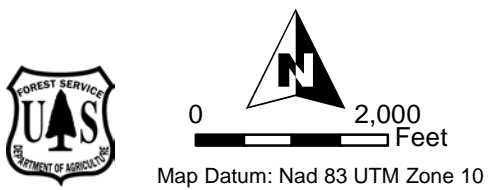
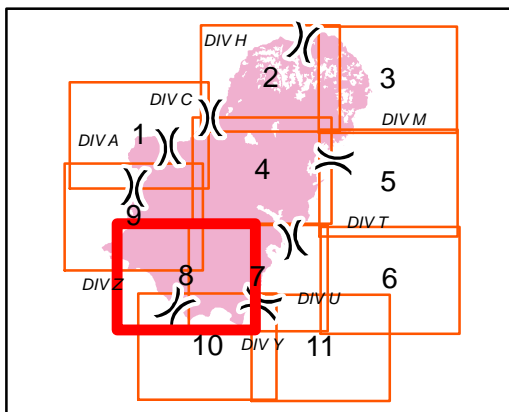


# IAP MAP

GAP FIRE  
CA-KNF-007501  
SEPTEMBER 12, 2016  
32,224 ACRES  
IR FLIGHT 9/9 @ 2157 HRS.  
PAGE 8 OF 11



- XXXX Completed Dozer Line
- Completed Line
- H - Hand Line
- R - Road as Completed Line
- ▲ Aerial Hazard
- Drop Point
- Helispot
- W Water Source
- W Restricted Water Source
- ) Division
- Isolated Heat Source
- ⚓ Boat launch
- Structure
- ▨ USDA FOREST SERVICE



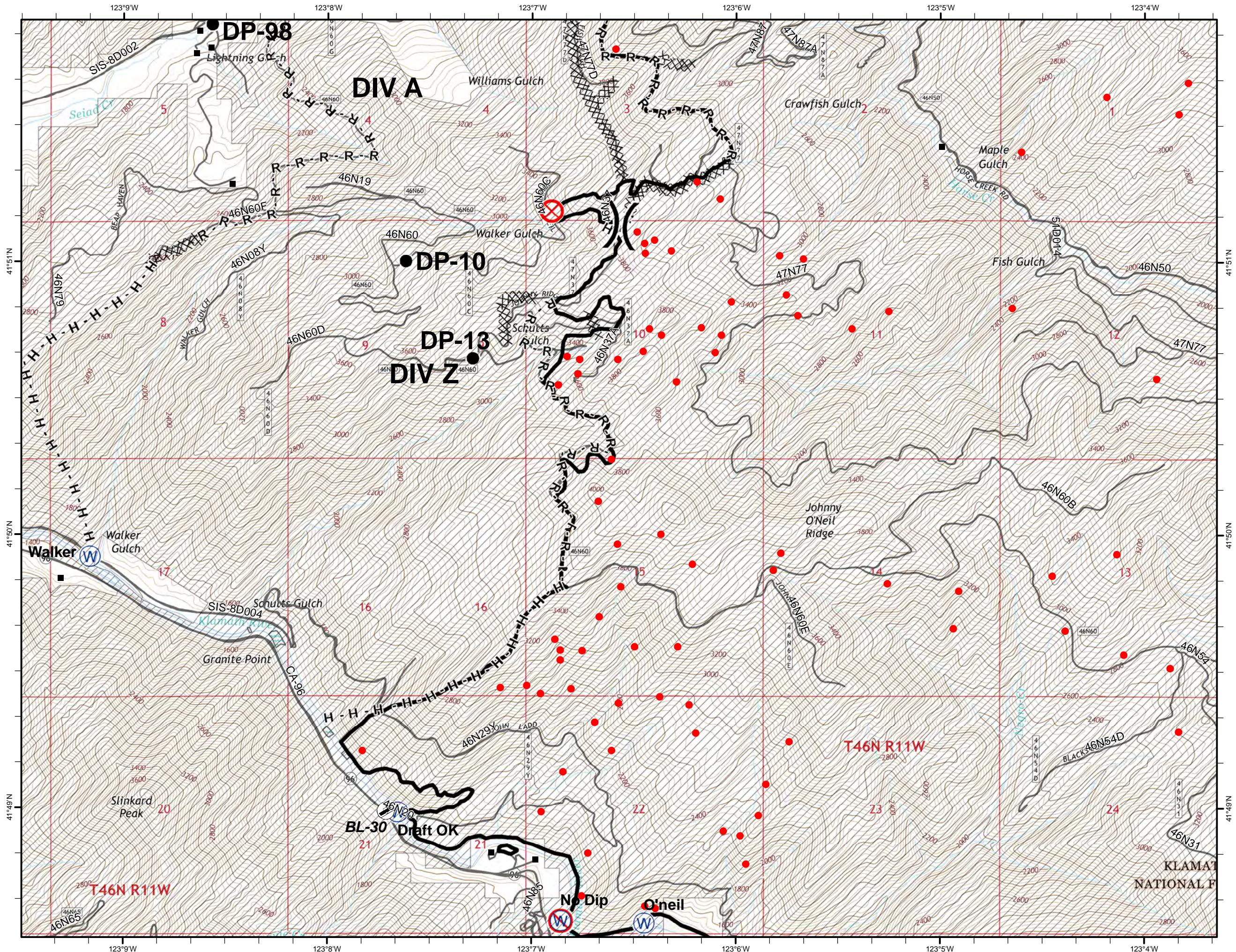
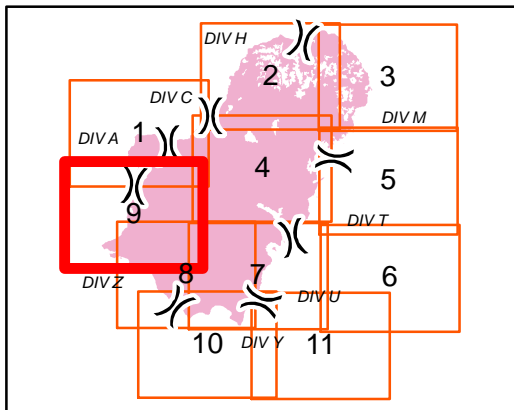


# IAP MAP

GAP FIRE  
 CA-KNF-007501  
 SEPTEMBER 12, 2016  
 32,224 ACRES  
 IR FLIGHT 9/9 @ 2157 HRS.  
 PAGE 9 OF 11



- Completed Dozer Line
- Completed Line
- Hand Line
- Road as Completed Line
- Drop Point
- Fire Origin
- Water Source
- Restricted Water Source
- Division
- Isolated Heat Source
- Boat launch
- Structure
- USDA FOREST SERVICE



0 2,000 Feet  
 Map Datum: Nad 83 UTM Zone 10

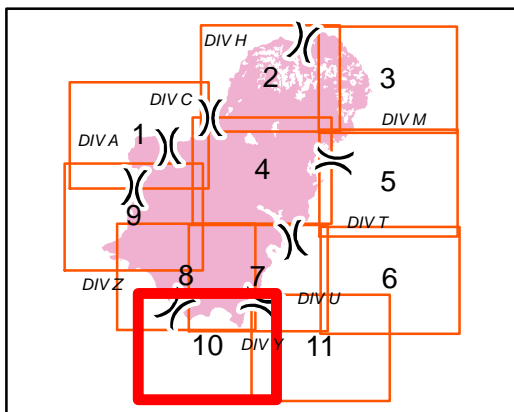


# IAP MAP

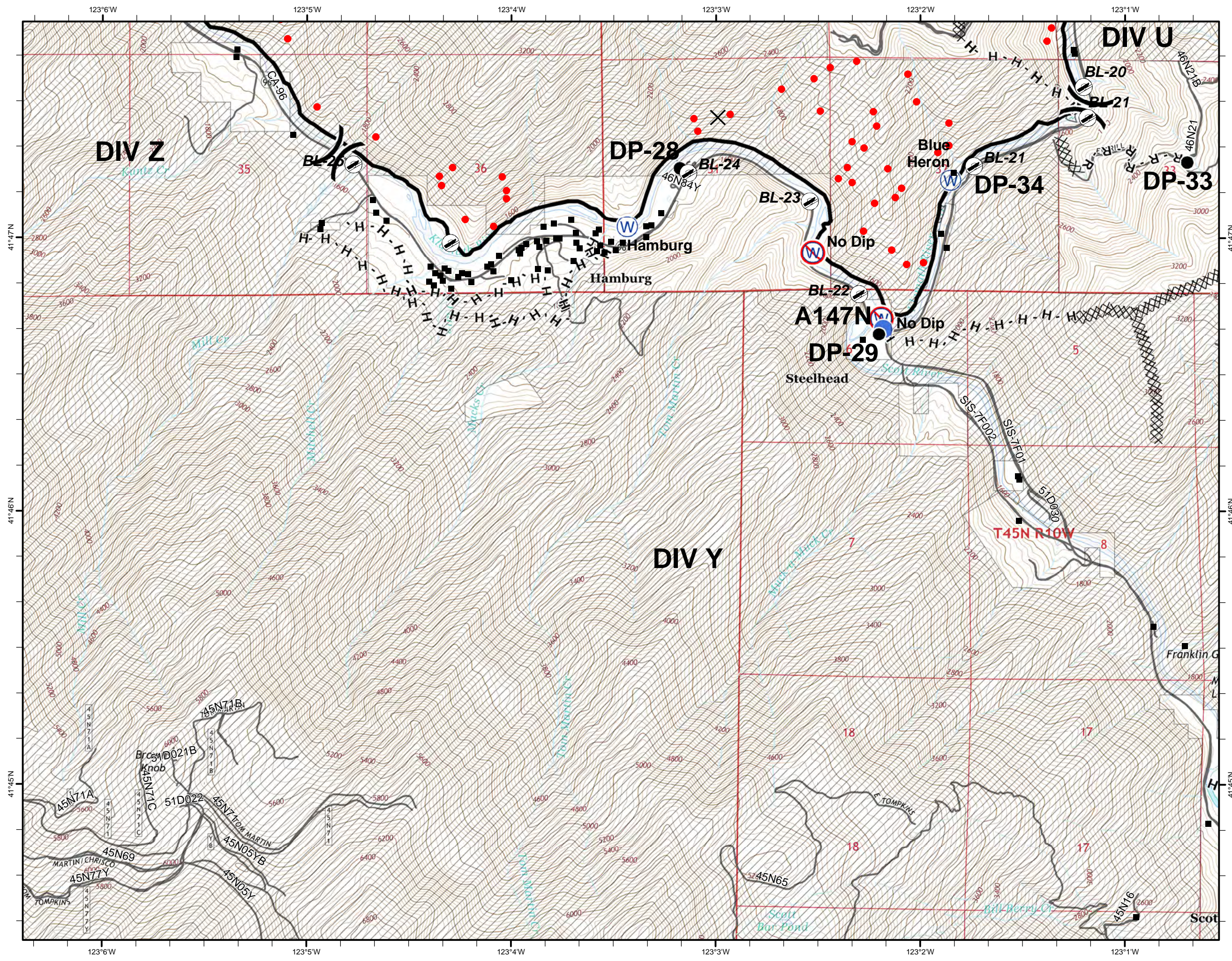
GAP FIRE  
 CA-KNF-007501  
 SEPTEMBER 12, 2016  
 32,224 ACRES  
 IR FLIGHT 9/9 @ 2157 HRS.  
 PAGE 10 OF 11



- XXXX Completed Dozer Line
- Completed Line
- H - Hand Line
- R - Road as Completed Line
- Drop Point
- Helispot
- W Water Source
- W Restricted Water Source
- ) Division
- Isolated Heat Source
- Boat launch
- Structure
- USDA FOREST SERVICE



Map Datum: Nad 83 UTM Zone 10





# IAP MAP

GAP FIRE  
CA-KNF-007501  
SEPTEMBER 12, 2016  
32,224 ACRES  
IR FLIGHT 9/9 @ 2157 HRS.  
PAGE 11 OF 11



- XXXX Completed Dozer Line
- Completed Line
- H - Hand Line
- R - Road as Completed Line
- Drop Point
- W Water Source
- ) Division
- Isolated Heat Source
- Boat launch
- Structure
- USDA FOREST SERVICE

