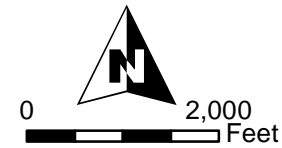
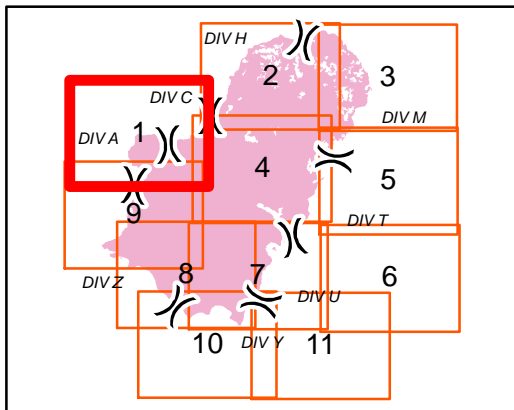


IAP MAP

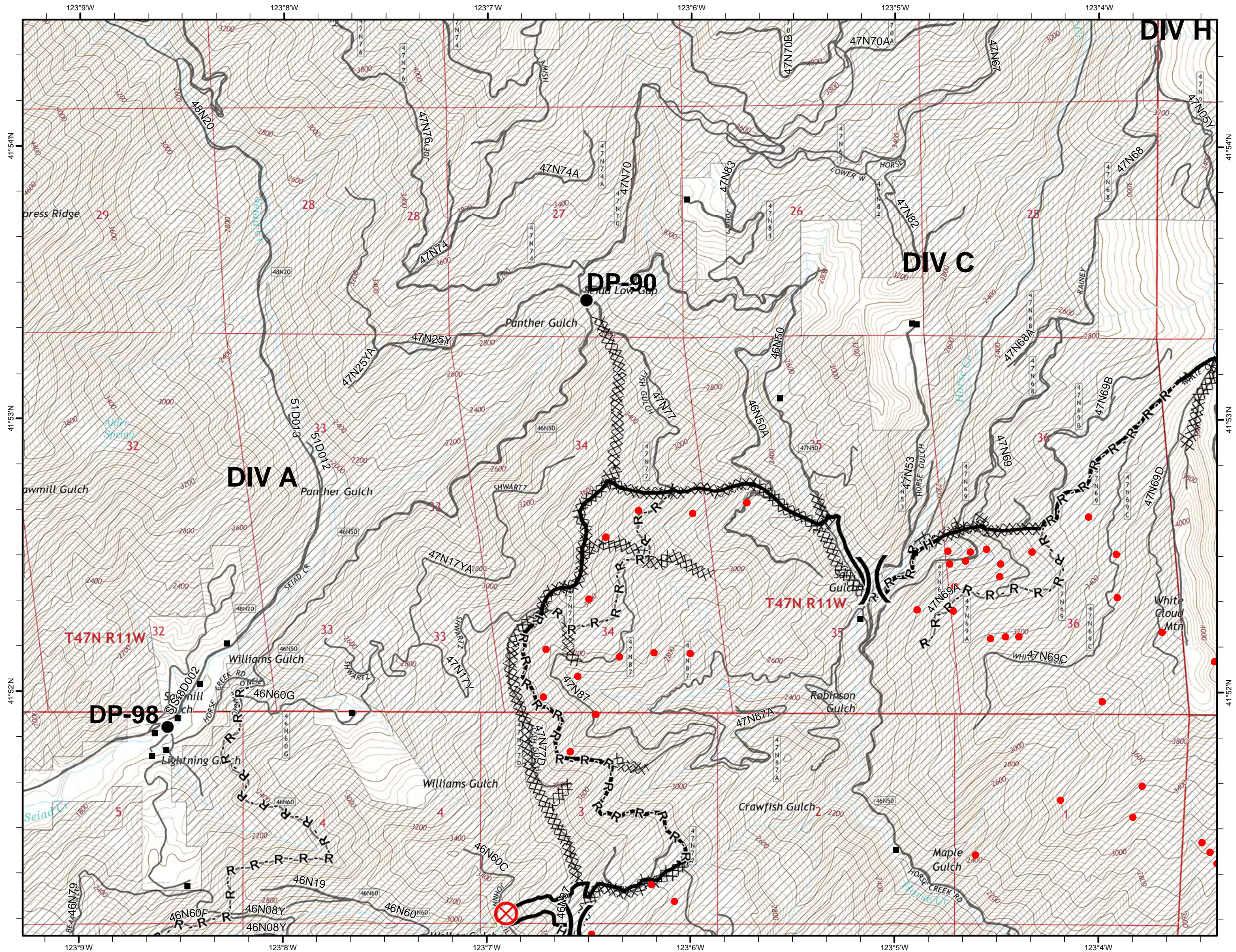
GAP FIRE
CA-KNF-007501
SEPTEMBER 13, 2016
33,867 ACRES
AS OF 9/12 @ 1127 HRS.
PAGE 1 OF 11



- XXXX Completed Dozer Line
- Completed Line
- H - Hand Line
- R - Road as Completed Line
- Drop Point
- ⊗ Fire Origin
- ⊕ Water Source
-) Division
- Isolated Heat Source
- Structure
- ▨ USDA FOREST SERVICE






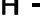







Map Datum: Nad 83 UTM Zone 10


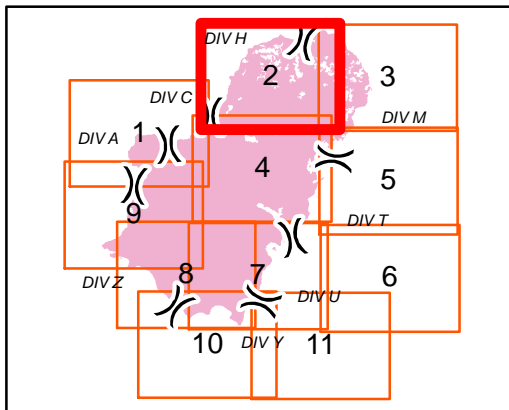


IAP MAP

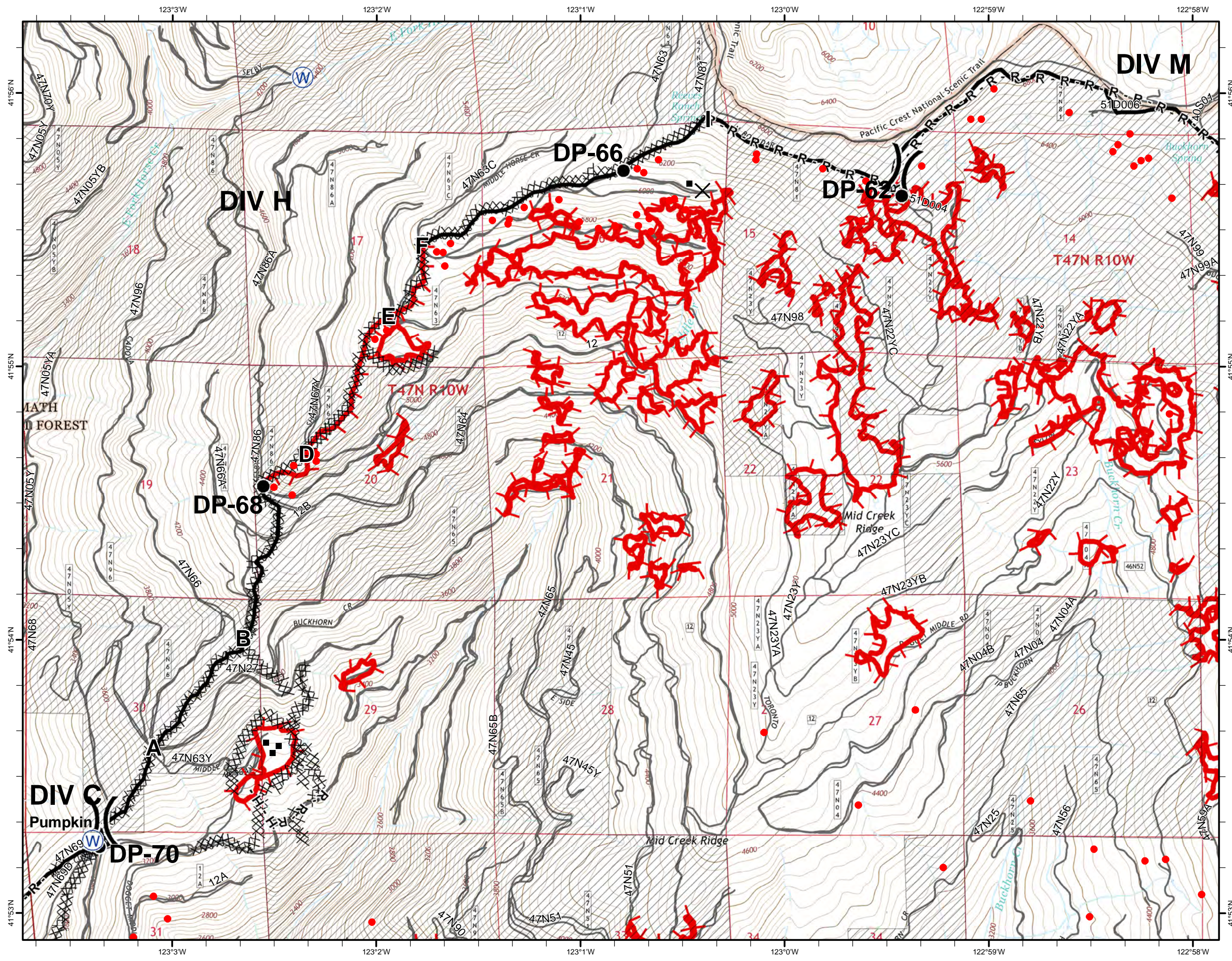
GAP FIRE
CA-KNF-007501
SEPTEMBER 13, 2016
33,867 ACRES
AS OF 9/12 @ 1127 HRS.
PAGE 2 OF 11



-  Uncontrolled Fire Edge
-  Completed Dozer Line
-  Completed Line
-  Hand Line
-  Road as Completed Line
-  Drop Point
-  Water Source
-  Division
-  Isolated Heat Source
-  Structure
-  USDA FOREST SERVICE



Map Datum: Nad 83 UTM Zone 10

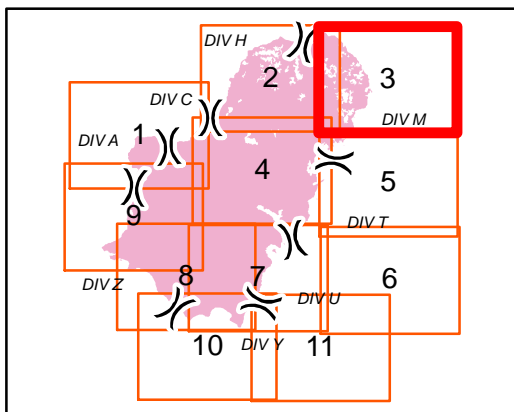


IAP MAP

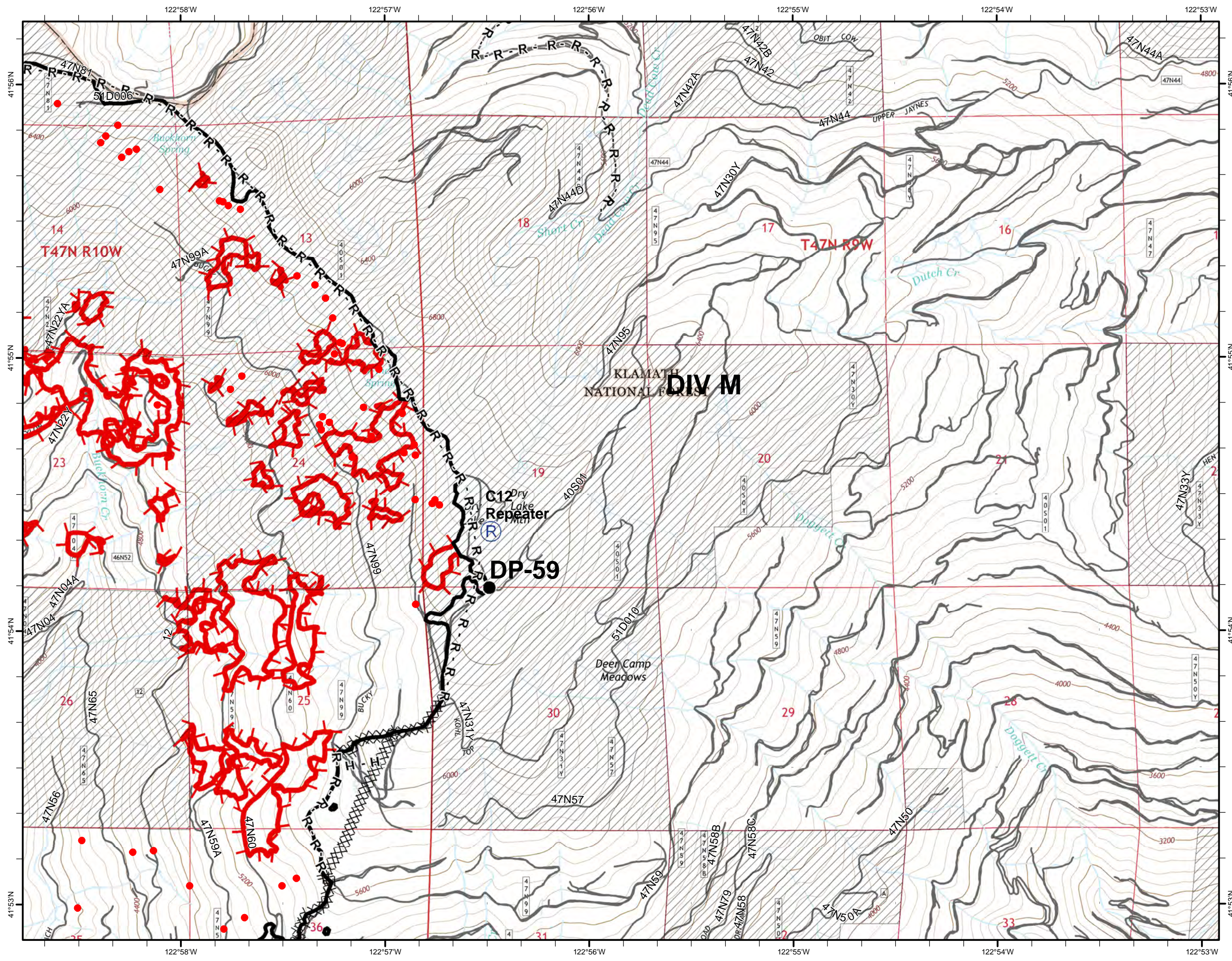
GAP FIRE
 CA-KNF-007501
 SEPTEMBER 13, 2016
 33,867 ACRES
 AS OF 9/12 @ 1127 HRS.
 PAGE 3 OF 11



- Uncontrolled Fire Edge
- Completed Dozer Line
- Completed Line
- Hand Line
- Road as Completed Line
- Drop Point
- Repeater
- Division
- Isolated Heat Source
- USDA FOREST SERVICE

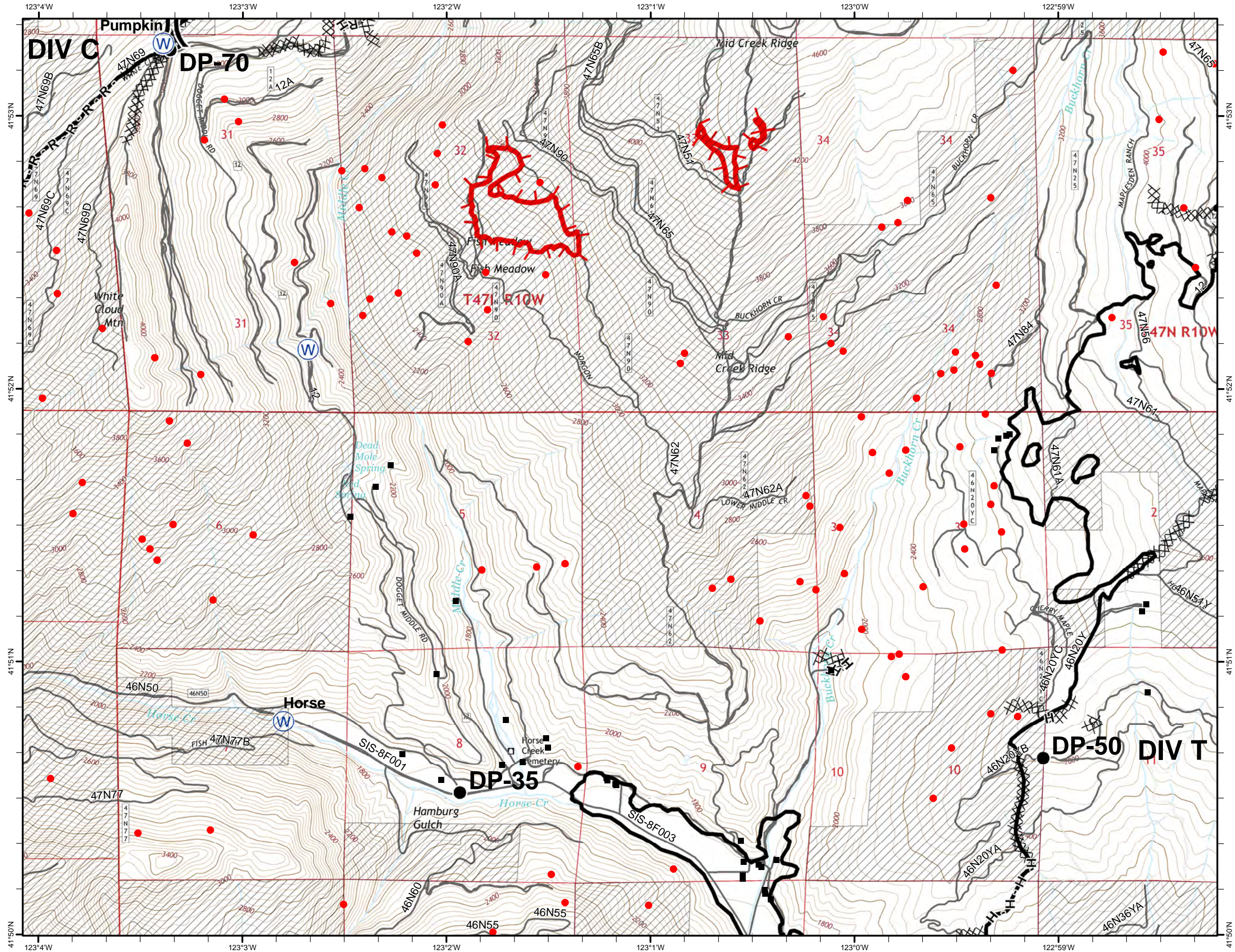


Map Datum: Nad 83 UTM Zone 10

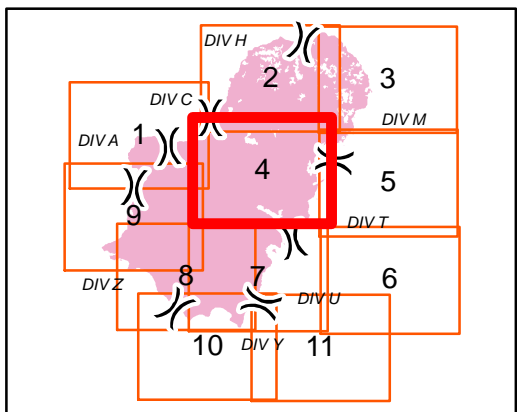


IAP MAP

GAP FIRE
CA-KNF-007501
SEPTEMBER 13, 2016
33,867 ACRES
AS OF 9/12 @ 1127 HRS.
PAGE 4 OF 11



- Uncontrolled Fire Edge
- Completed Dozer Line
- Completed Line
- Hand Line
- Road as Completed Line
- Drop Point
- Water Source
- Division
- Isolated Heat Source
- Structure
- USDA FOREST SERVICE



Map Datum: Nad 83 UTM Zone 10

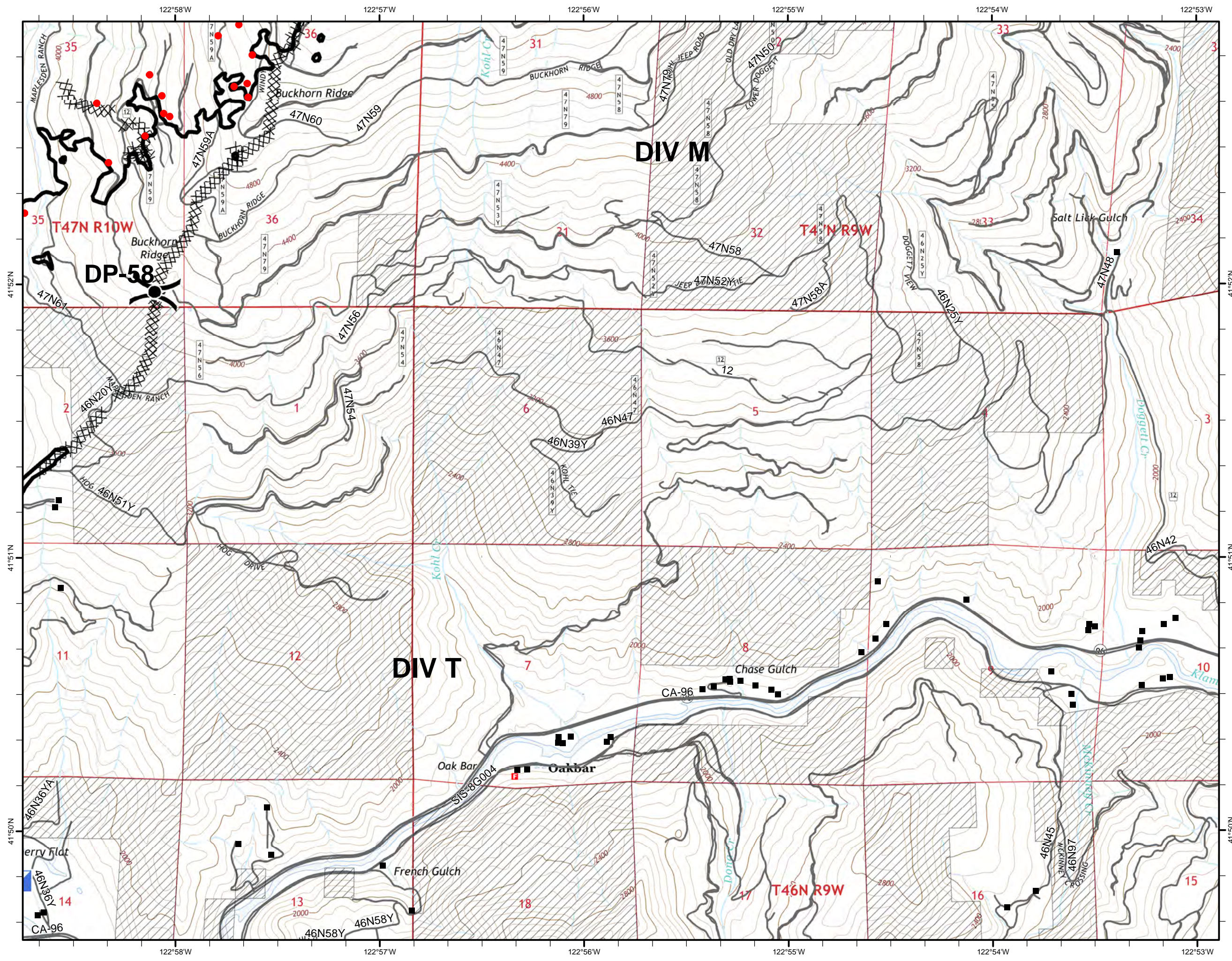
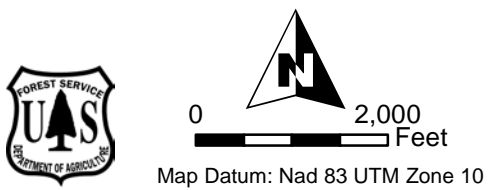
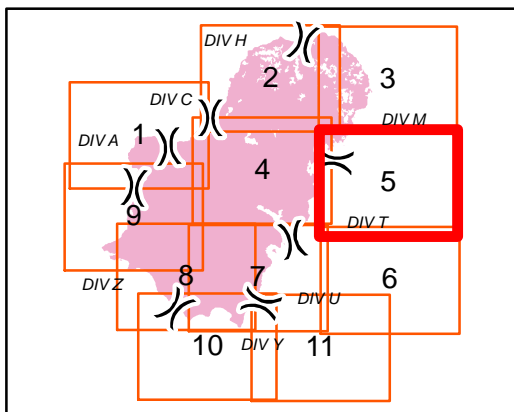


IAP MAP

GAP FIRE
CA-KNF-007501
SEPTEMBER 13, 2016
33,867 ACRES
AS OF 9/12 @ 1127 HRS.
PAGE 5 OF 11



- XXXX Completed Dozer Line
- Completed Line
- Drop Point
- ▣ Incident Command Post
-) Division
- Isolated Heat Source
- Structure
- ▨ USDA FOREST SERVICE

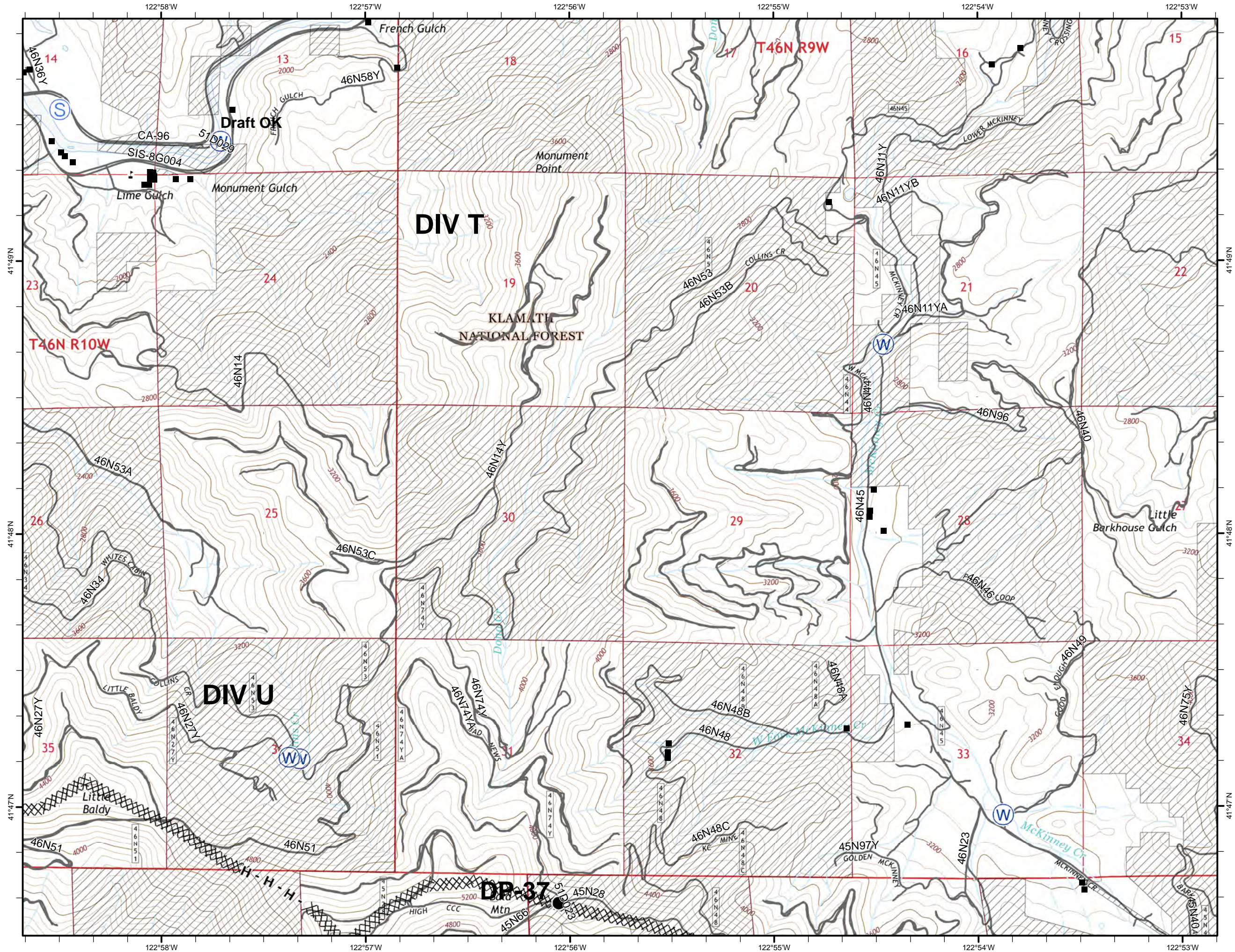
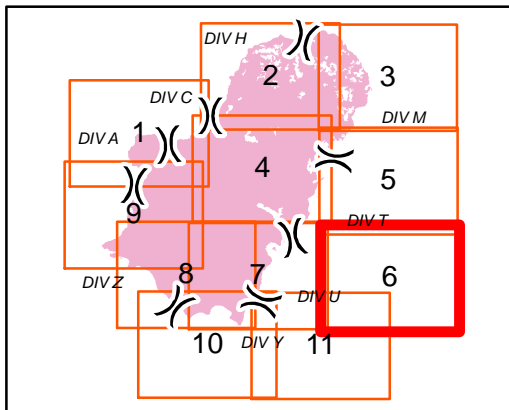


IAP MAP

GAP FIRE
CA-KNF-007501
SEPTEMBER 13, 2016
33,867 ACRES
AS OF 9/12 @ 1127 HRS.
PAGE 6 OF 11



- XXXX Completed Dozer Line
- H - Hand Line
- Drop Point
- S Staging Area
- W Water Source
-) Division
- Structure
- USDA FOREST SERVICE

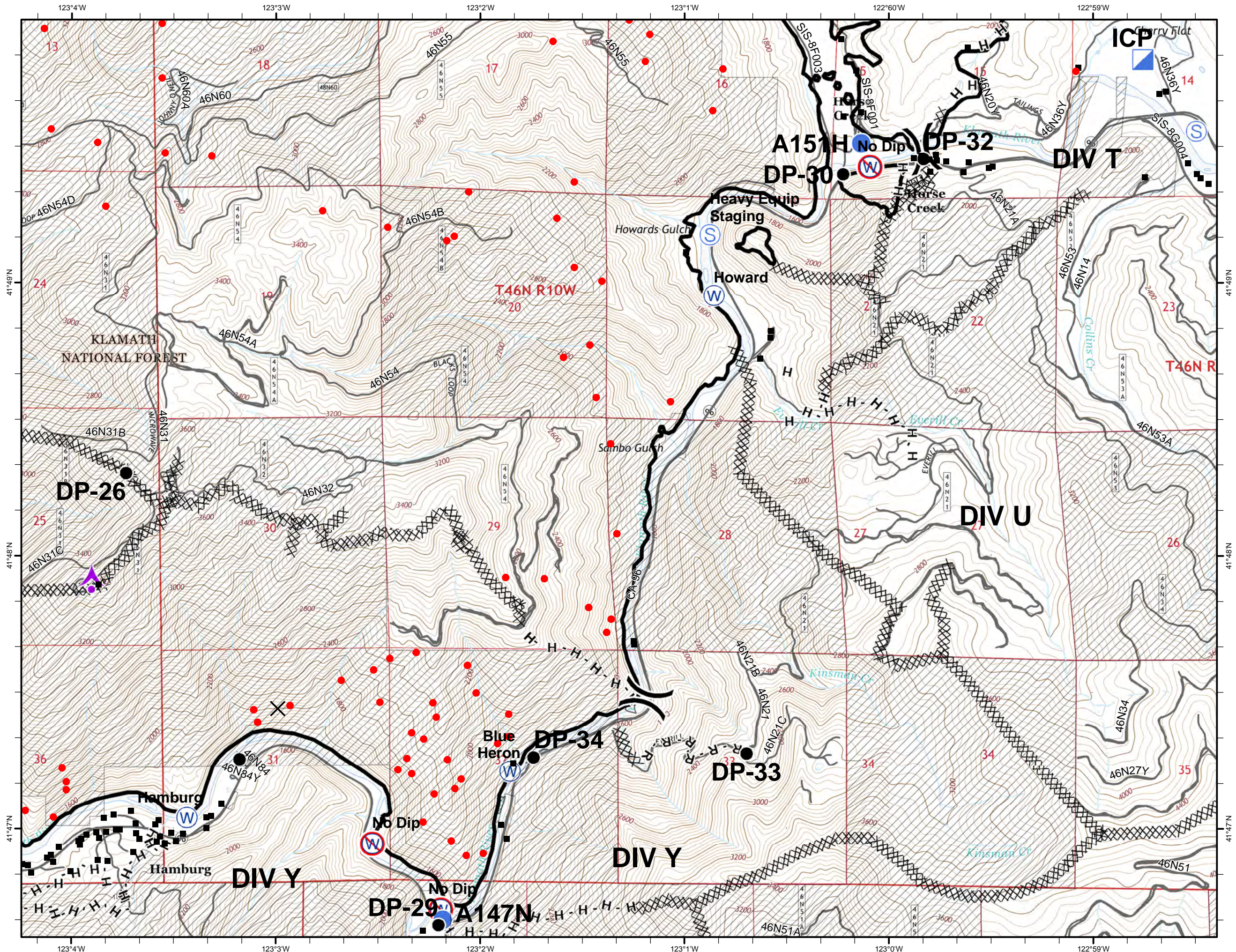
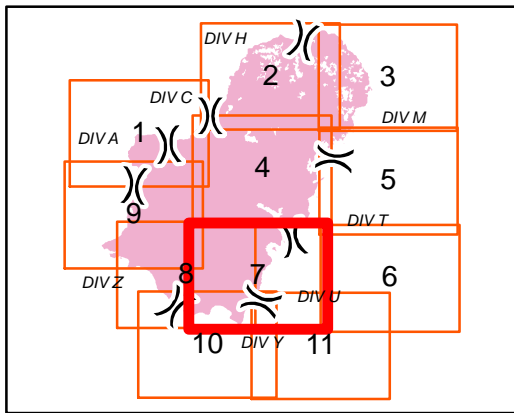


IAP MAP

GAP FIRE
 CA-KNF-007501
 SEPTEMBER 13, 2016
 33,867 ACRES
 AS OF 9/12 @ 1127 HRS.
 PAGE 7 OF 11



- XXXX Completed Dozer Line
- Completed Line
- H - Hand Line
- R - Road as Completed Line
- Aerial Hazard
- Drop Point
- Helispot
- Incident Command Post
- Staging Area
- Water Source
- Restricted Water Source
- Division
- Isolated Heat Source
- Structure
- USDA FOREST SERVICE



IAP MAP

GAP FIRE
 CA-KNF-007501
 SEPTEMBER 13, 2016
 33,867 ACRES
 AS OF 9/12 @ 1127 HRS.
 PAGE 8 OF 11



XXXX Completed Dozer Line

— Completed Line

H - Hand Line

R - Road as Completed Line

Aerial Hazard

Drop Point

Helispot

Water Source

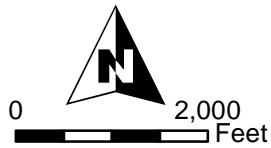
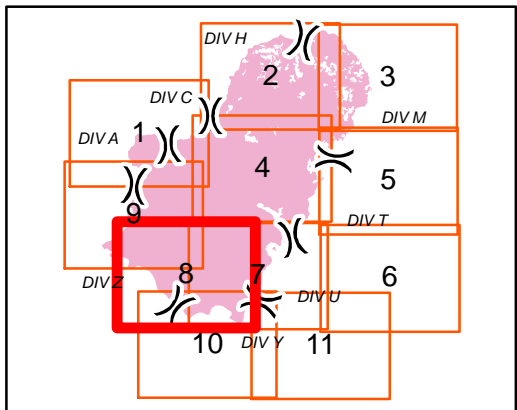
Restricted Water Source

Division

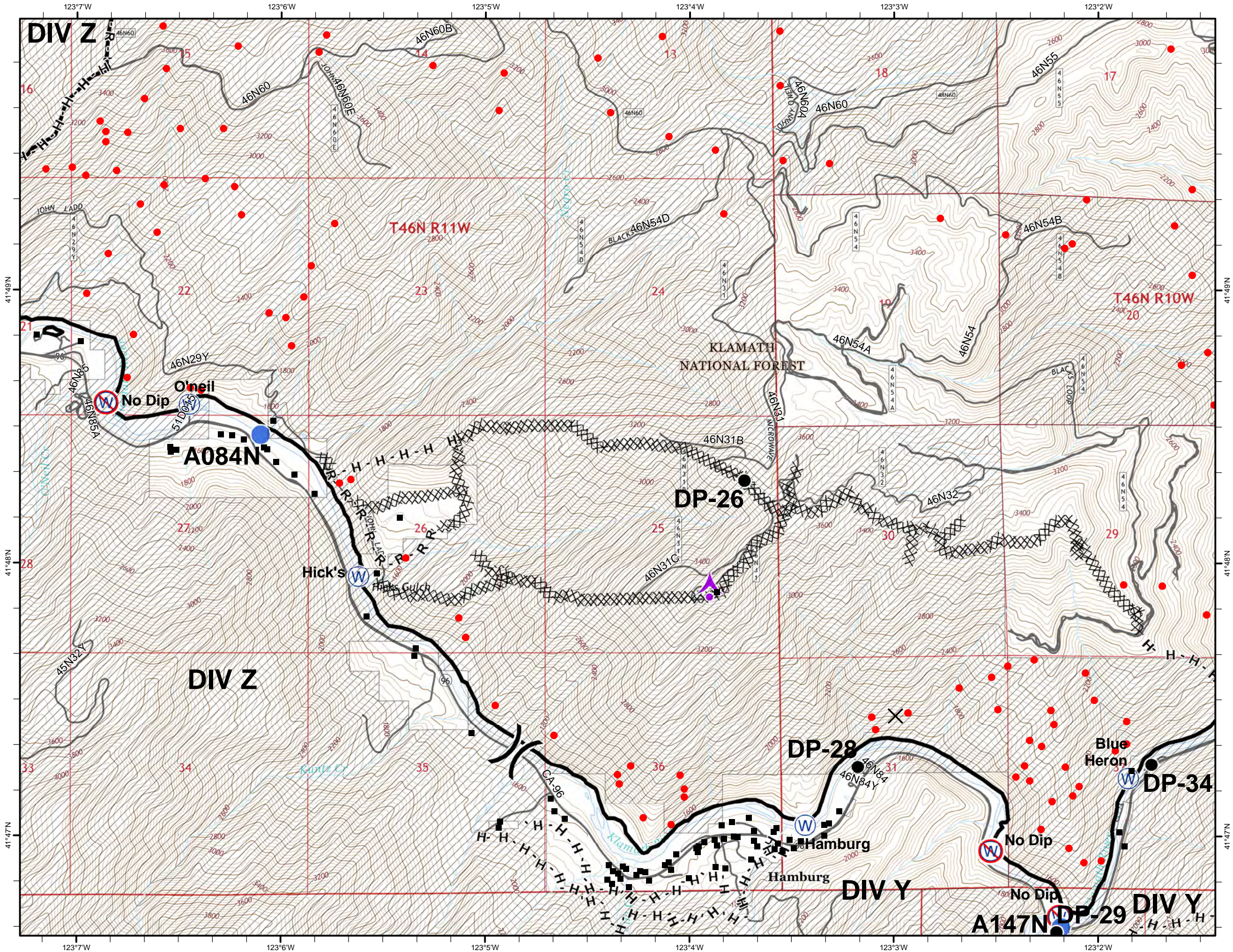
Isolated Heat Source

Structure

USDA FOREST SERVICE



Map Datum: Nad 83 UTM Zone 10

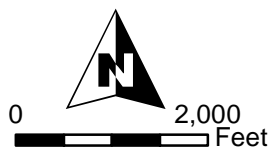
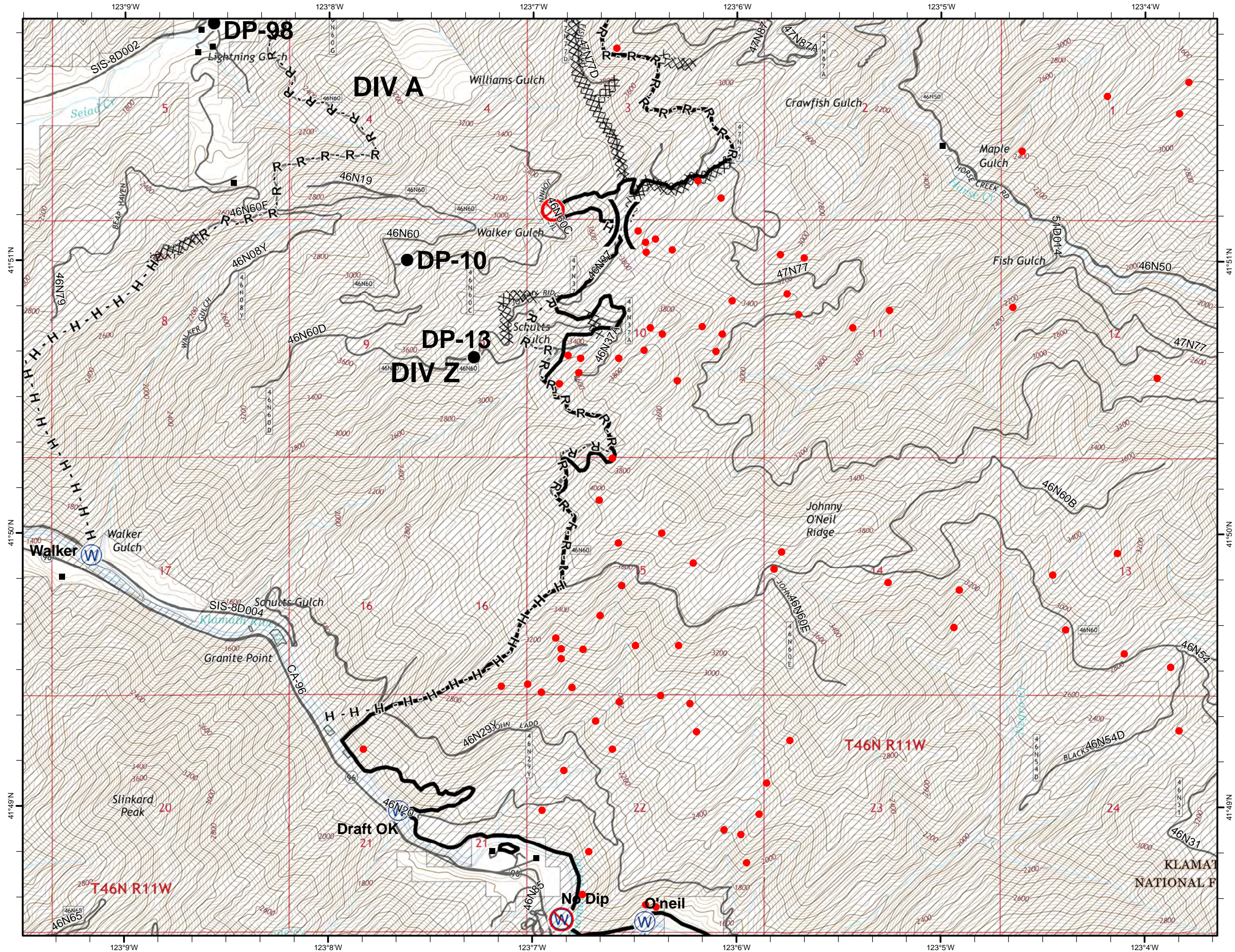
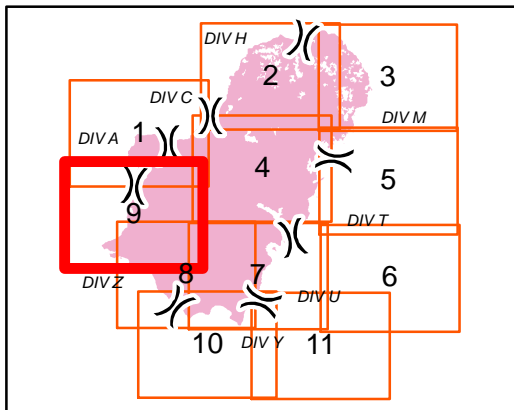


IAP MAP

GAP FIRE
 CA-KNF-007501
 SEPTEMBER 13, 2016
 33,867 ACRES
 AS OF 9/12 @ 1127 HRS.
 PAGE 9 OF 11



- XXXX Completed Dozer Line
- Completed Line
- H - Hand Line
- R - Road as Completed Line
- Drop Point
- ⊗ Fire Origin
- ⊕ Water Source
- ⊖ Restricted Water Source
-) (Division
- Isolated Heat Source
- Structure
- ▨ USDA FOREST SERVICE



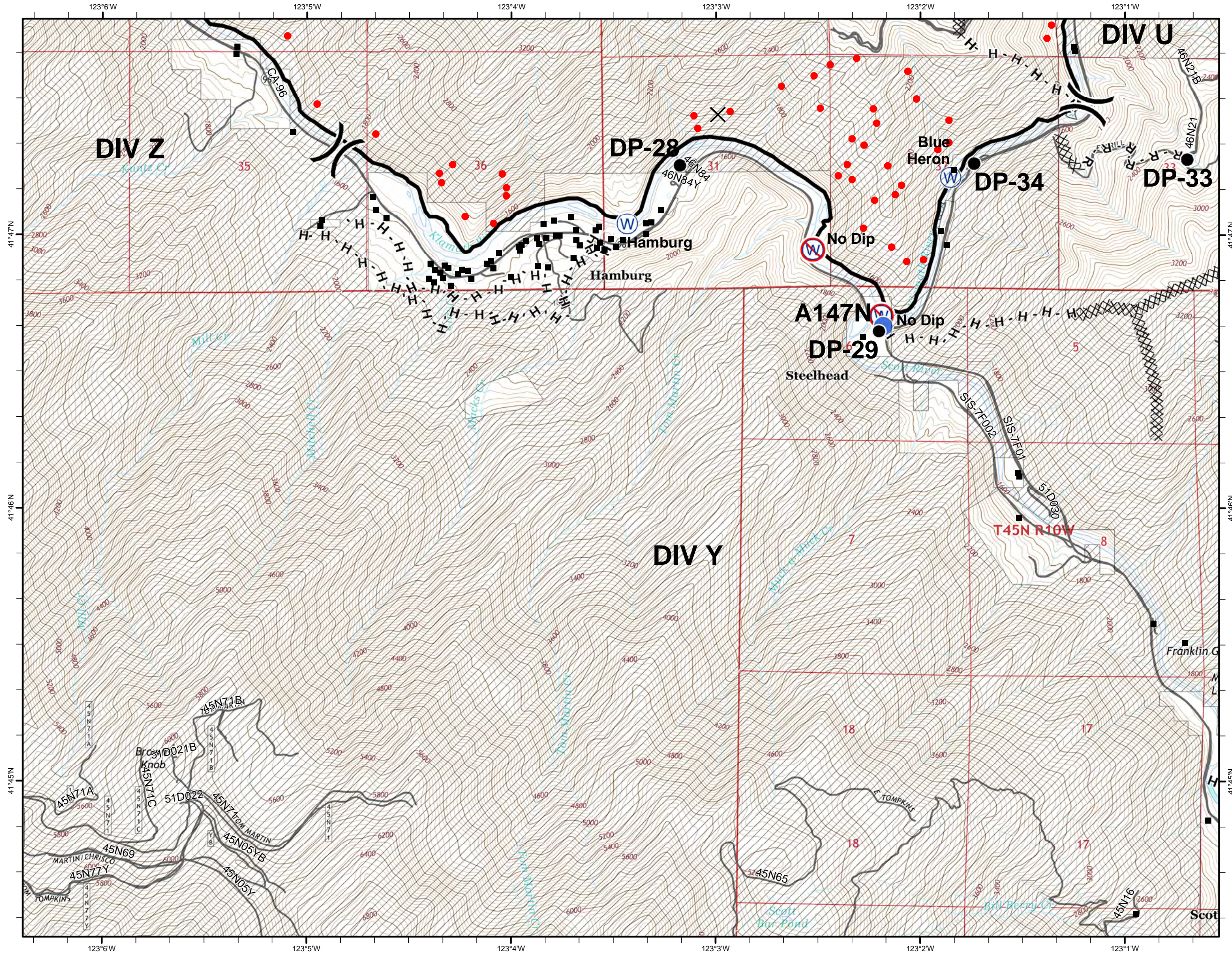
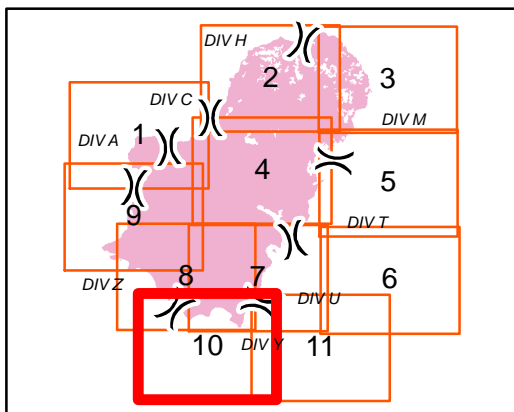
Map Datum: Nad 83 UTM Zone 10

IAP MAP

GAP FIRE
CA-KNF-007501
SEPTEMBER 13, 2016
33,867 ACRES
AS OF 9/12 @ 1127 HRS.
PAGE 10 OF 11



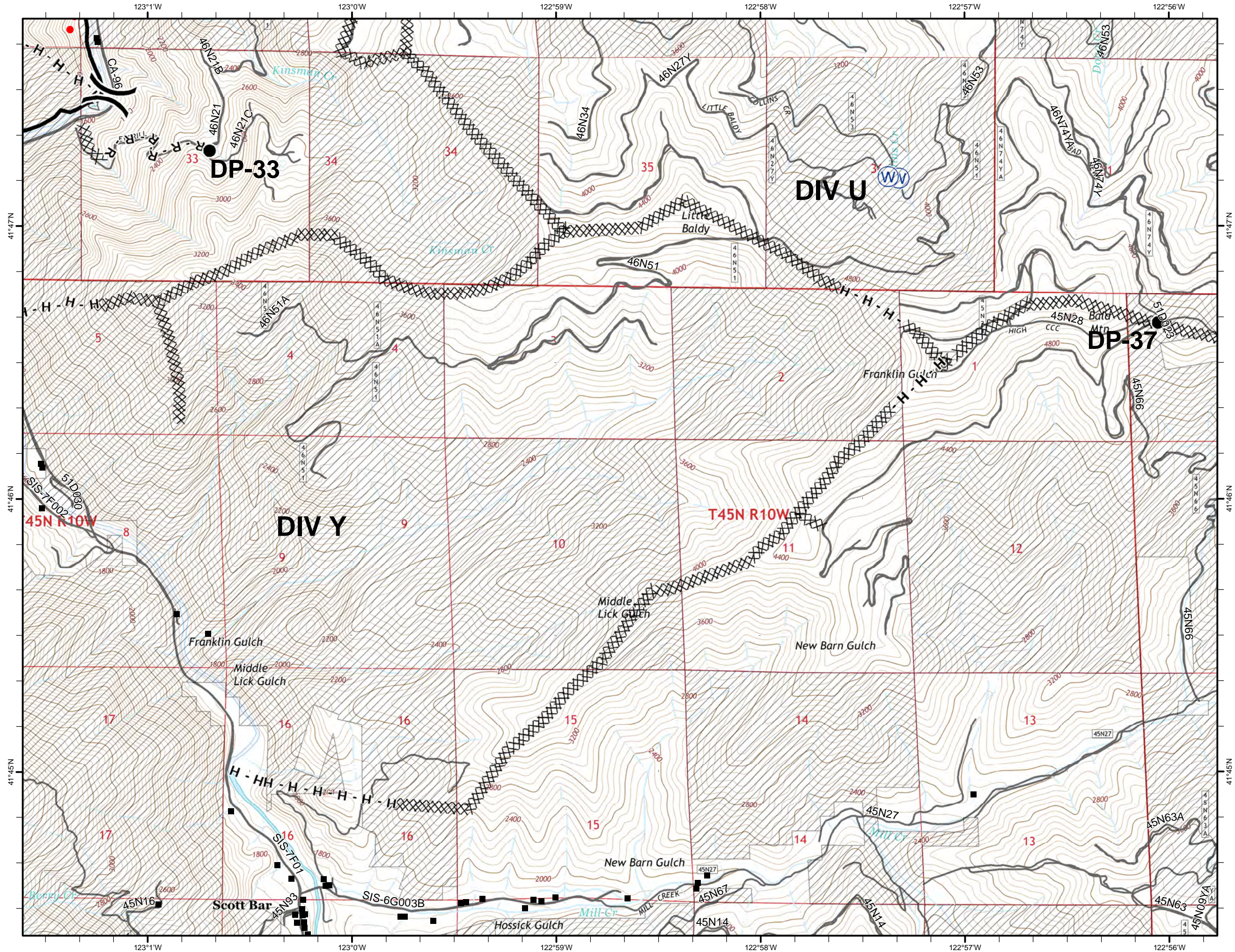
- XXXX Completed Dozer Line
- Completed Line
- H - Hand Line
- R - Road as Completed Line
- Drop Point
- Helispot
- W Water Source
- W Restricted Water Source
-) Division
- Isolated Heat Source
- Structure
- USDA FOREST SERVICE



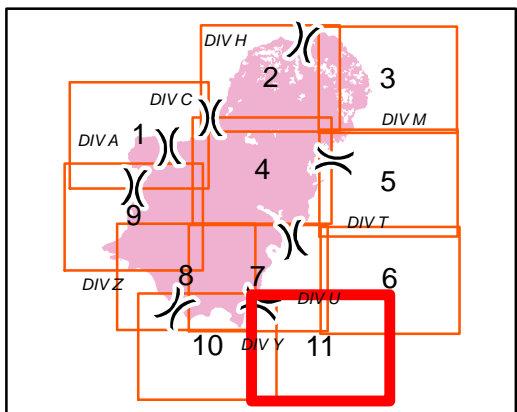
0 2,000 Feet
Map Datum: Nad 83 UTM Zone 10

IAP MAP

GAP FIRE
 CA-KNF-007501
 SEPTEMBER 13, 2016
 33,867 ACRES
 AS OF 9/12 @ 1127 HRS.
 PAGE 11 OF 11



- XXXX Completed Dozer Line
- Completed Line
- H - Hand Line
- R - Road as Completed Line
- Drop Point
- (W) Water Source
- () Division
- Isolated Heat Source
- Structure
- ▨ USDA FOREST SERVICE



Map Datum: Nad 83 UTM Zone 10

