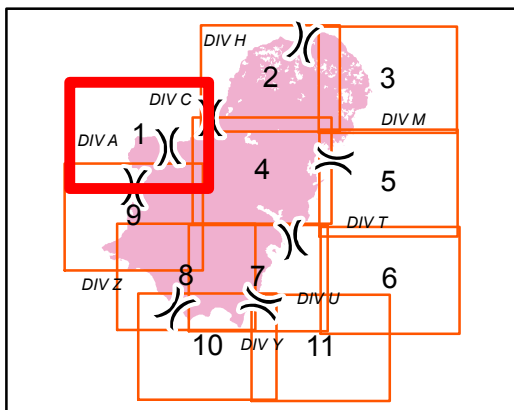


# IAP MAP

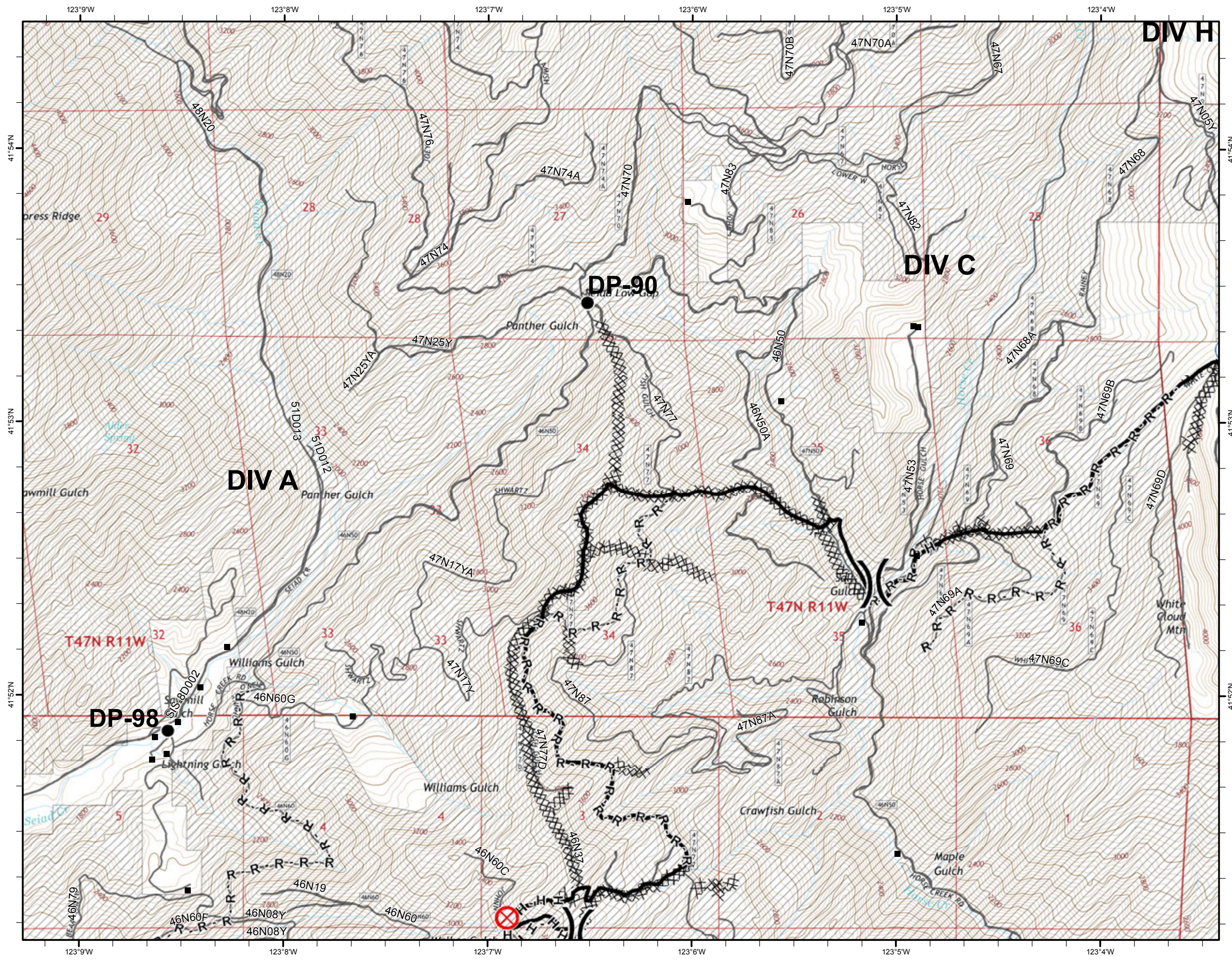
GAP FIRE  
CA-KNF-007501  
SEPTEMBER 16, 2016  
33,867 ACRES  
AS OF 9/12 @ 1127 HRS.  
PAGE 1 OF 11



- XXXX Completed Dozer Line
- Completed Line
- H - Hand Line
- R - Road as Completed Line
- Drop Point
- ⊗ Fire Origin
- ⊕ Water Source
- ) Division
- Structure
- ▨ USDA FOREST SERVICE



Map Datum: Nad 83 UTM Zone 10



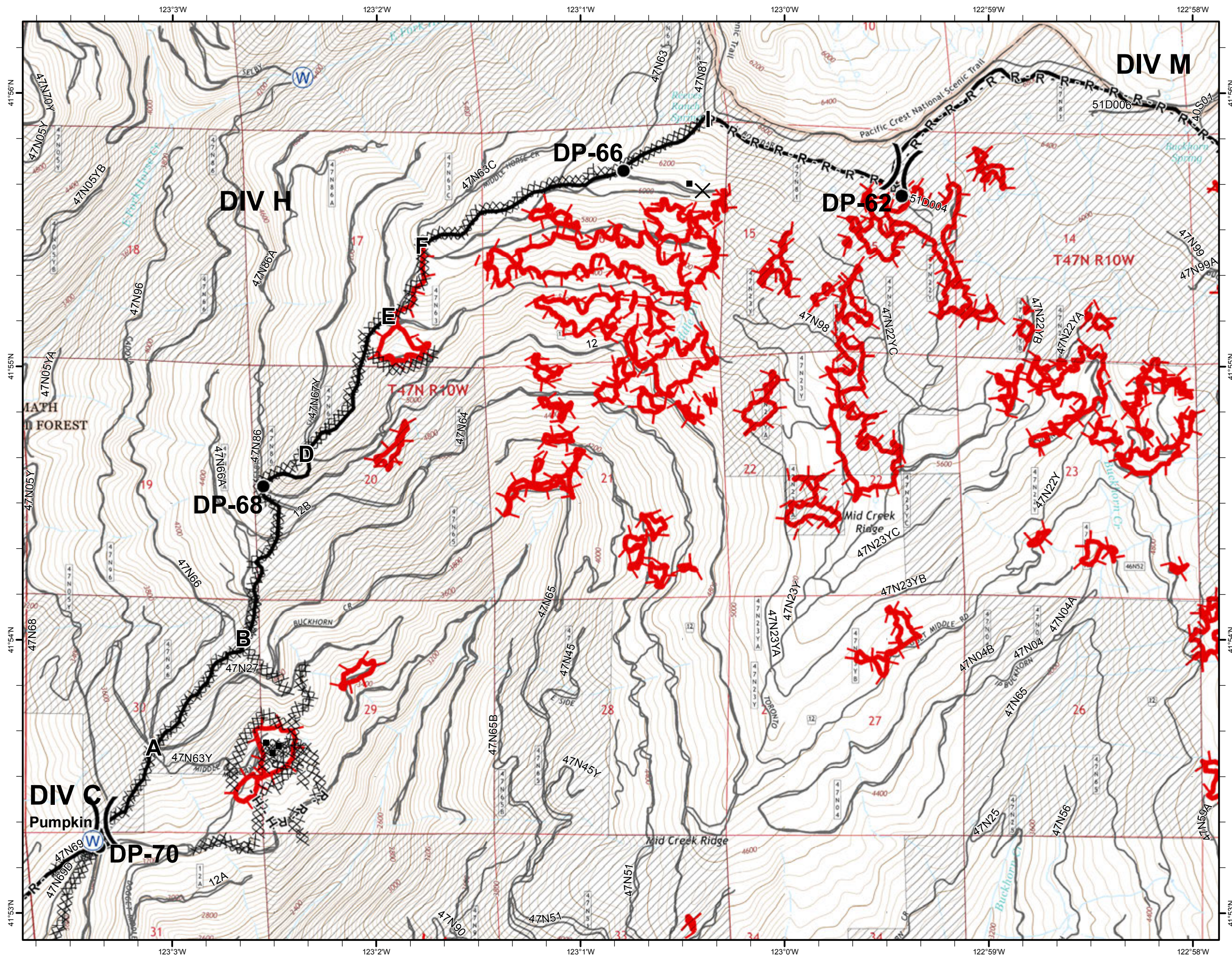
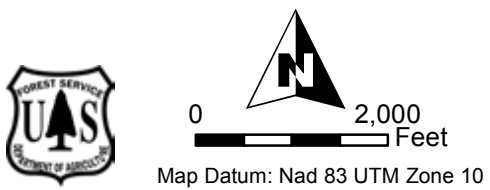
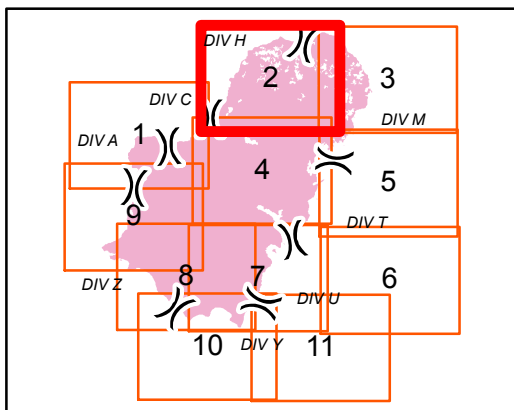


# IAP MAP

GAP FIRE  
CA-KNF-007501  
SEPTEMBER 16, 2016  
33,867 ACRES  
AS OF 9/12 @ 1127 HRS.  
PAGE 2 OF 11



- Uncontrolled Fire Edge
- Completed Dozer Line
- Completed Line
- Hand Line
- Road as Completed Line
- Drop Point
- Water Source
- Division
- Structure
- USDA FOREST SERVICE







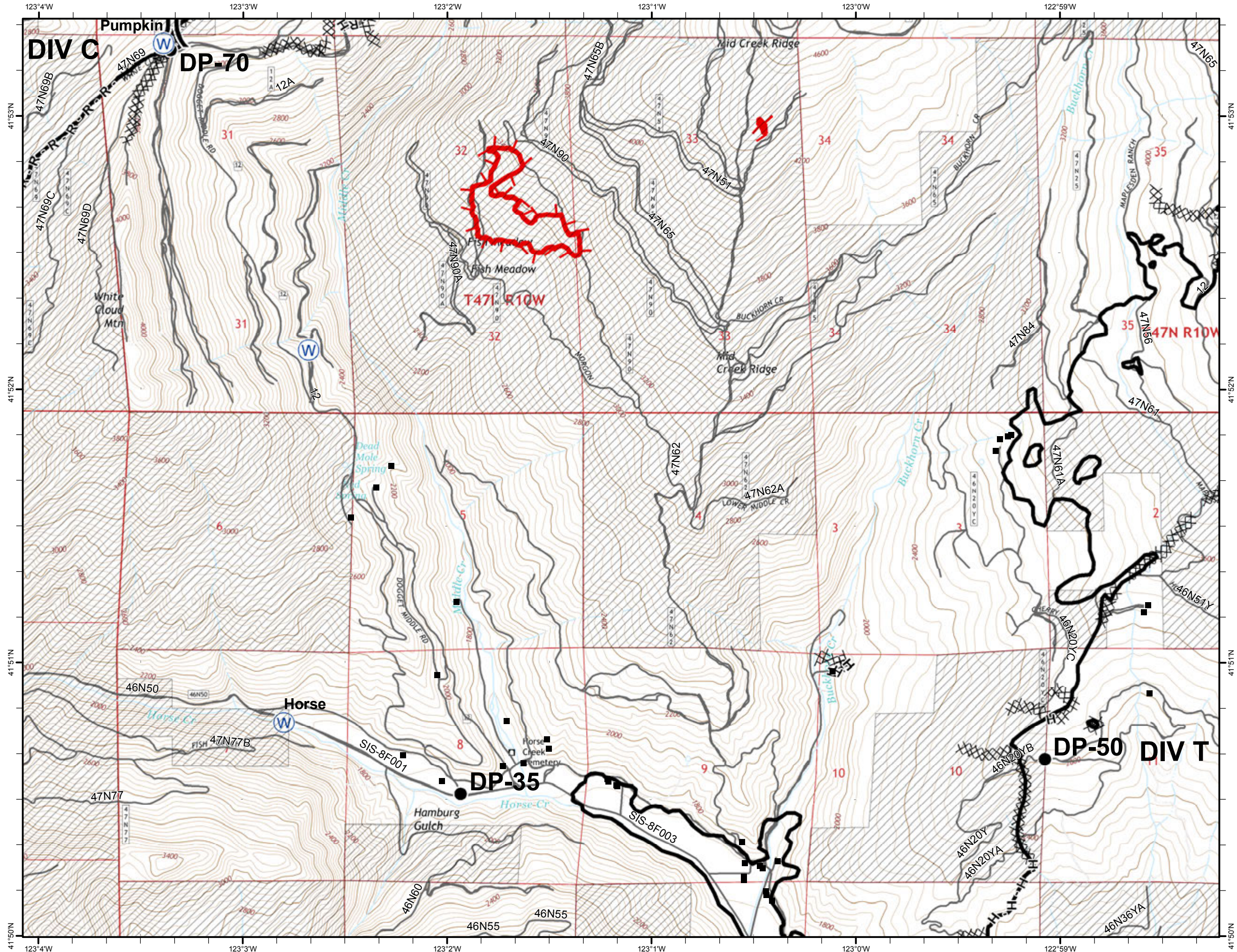
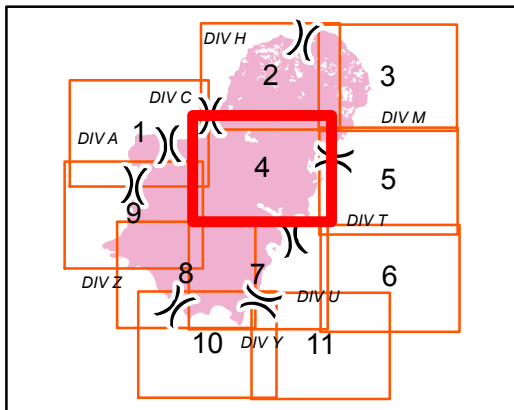


# IAP MAP

GAP FIRE  
CA-KNF-007501  
SEPTEMBER 16, 2016  
33,867 ACRES  
AS OF 9/12 @ 1127 HRS.  
PAGE 4 OF 11



- Uncontrolled Fire Edge
- Completed Dozer Line
- Completed Line
- Hand Line
- Road as Completed Line
- Drop Point
- Water Source
- Division
- Structure
- USDA FOREST SERVICE



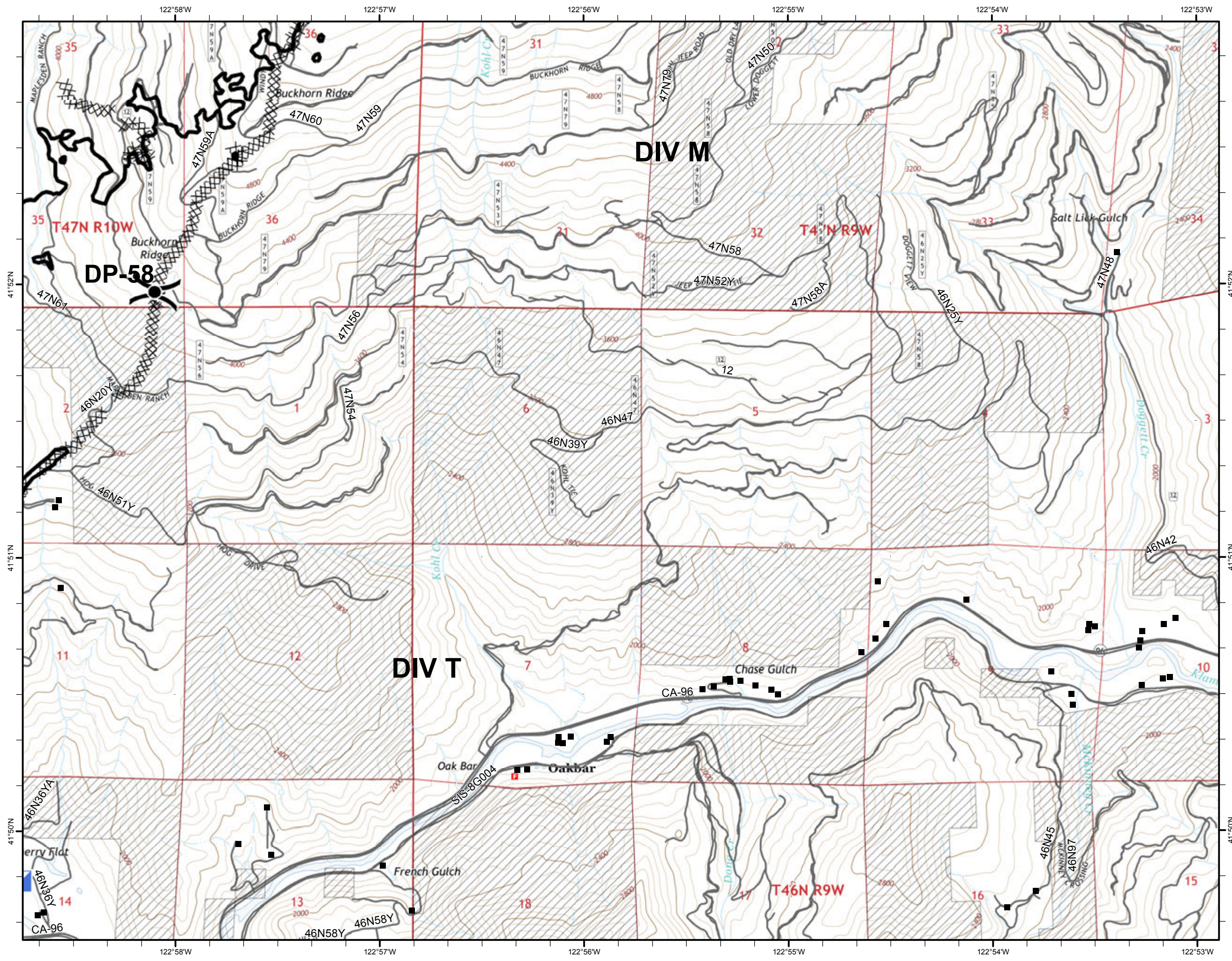
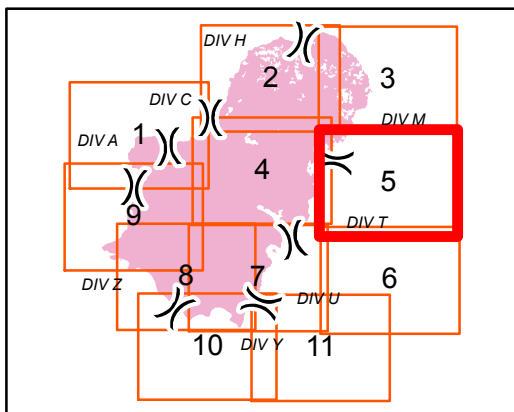


# IAP MAP

GAP FIRE  
CA-KNF-007501  
SEPTEMBER 16, 2016  
33,867 ACRES  
AS OF 9/12 @ 1127 HRS.  
PAGE 5 OF 11



- XXXX Completed Dozer Line
- Completed Line
- Drop Point
- ▣ Incident Command Post
- ) Division
- Structure
- ▨ USDA FOREST SERVICE







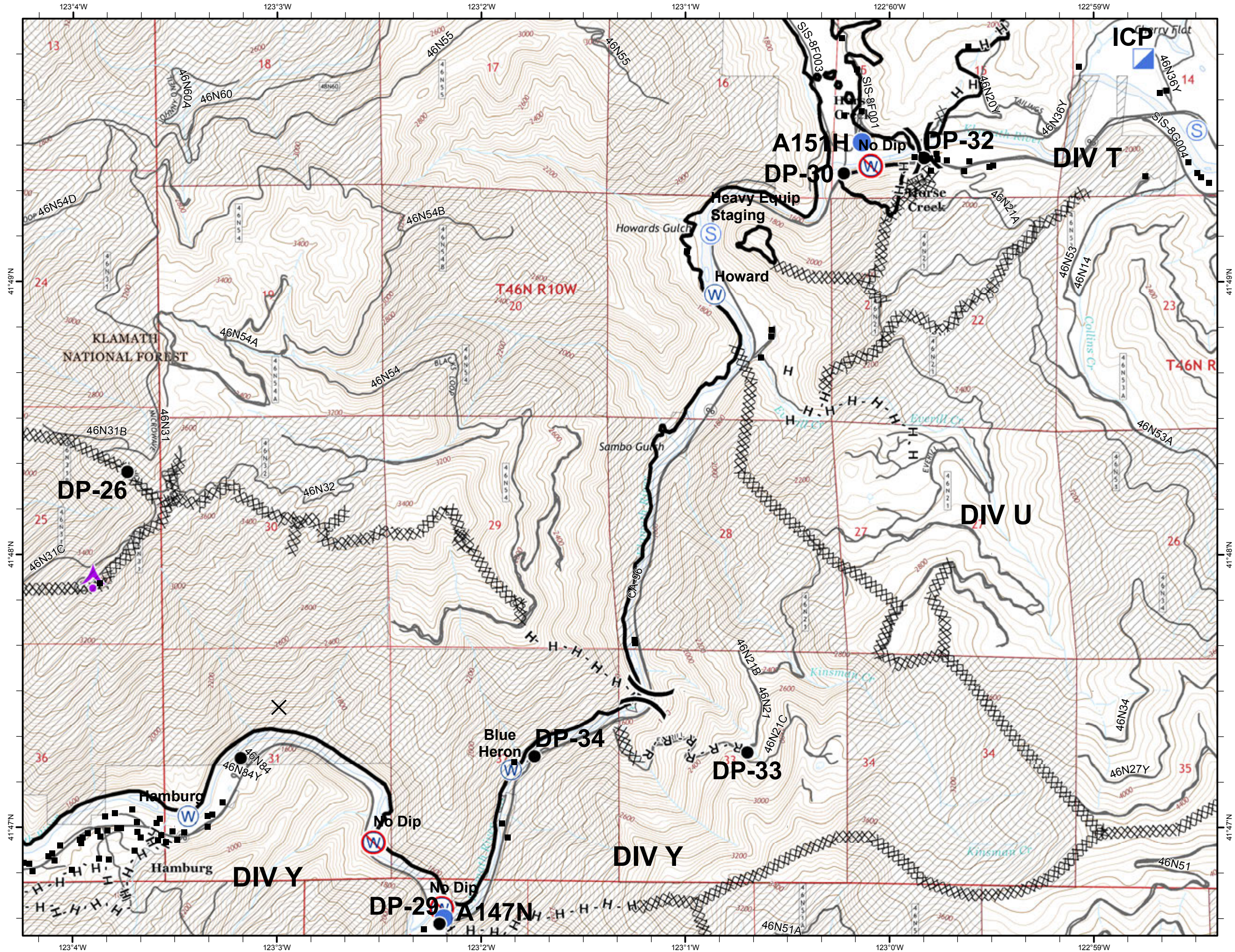
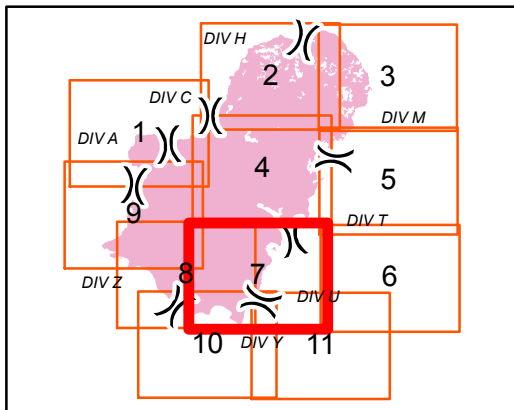


# IAP MAP

GAP FIRE  
CA-KNF-007501  
SEPTEMBER 16, 2016  
33,867 ACRES  
AS OF 9/12 @ 1127 HRS.  
PAGE 7 OF 11



- XXXX Completed Dozer Line
- Completed Line
- H - Hand Line
- R - Road as Completed Line
- Aerial Hazard
- Drop Point
- Helispot
- Incident Command Post
- Staging Area
- Water Source
- Restricted Water Source
- Division
- Structure
- USDA FOREST SERVICE





# IAP MAP

GAP FIRE  
CA-KNF-007501  
SEPTEMBER 16, 2016  
33,867 ACRES  
AS OF 9/12 @ 1127 HRS.  
PAGE 8 OF 11



XXXX Completed Dozer Line

— Completed Line

H - Hand Line

R - Road as Completed Line

▲ Aerial Hazard

● Drop Point

● Helispot

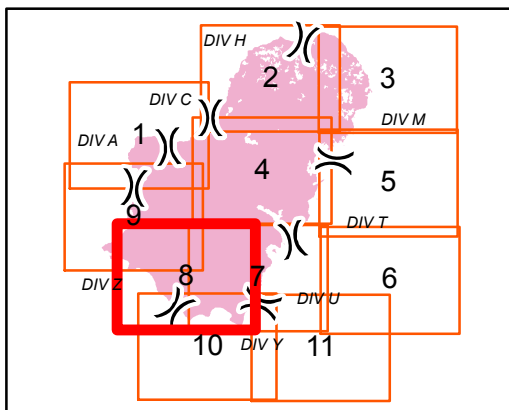
W Water Source

W Restricted Water Source

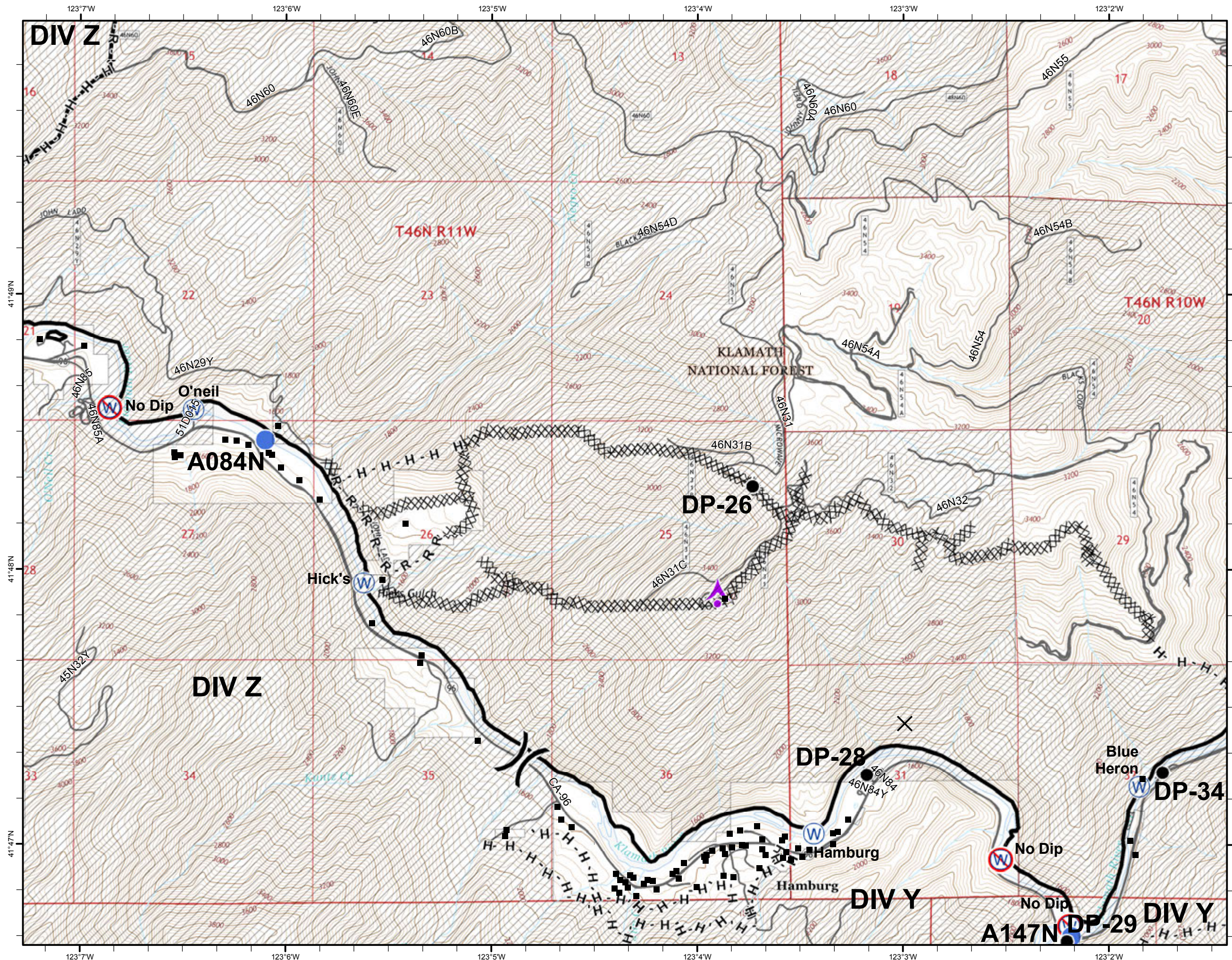
) Division

■ Structure

USDA FOREST SERVICE



Map Datum: Nad 83 UTM Zone 10



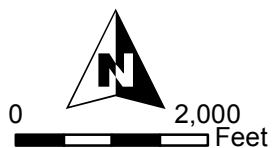
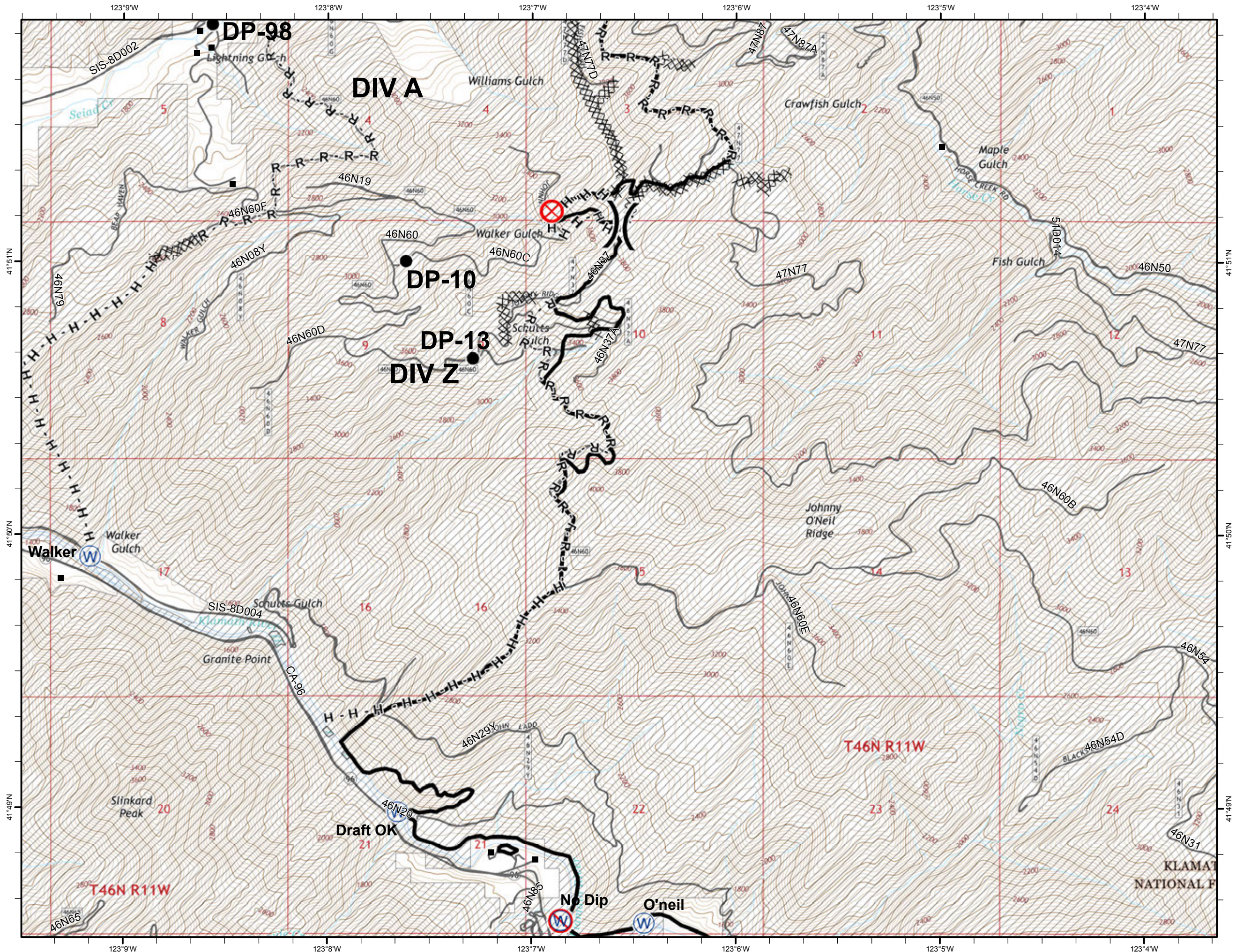
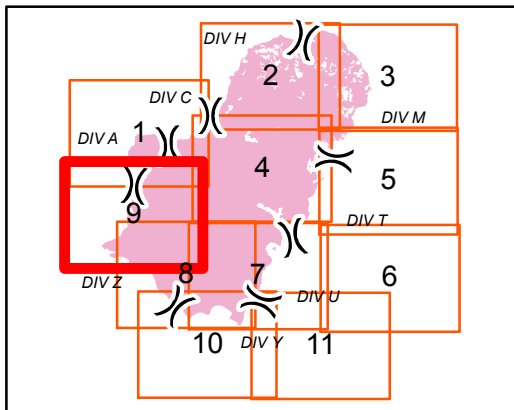


# IAP MAP

GAP FIRE  
 CA-KNF-007501  
 SEPTEMBER 16, 2016  
 33,867 ACRES  
 AS OF 9/12 @ 1127 HRS.  
 PAGE 9 OF 11



- Completed Dozer Line
- Completed Line
- Hand Line
- Road as Completed Line
- Drop Point
- Fire Origin
- Water Source
- Restricted Water Source
- Division
- Structure
- USDA FOREST SERVICE



Map Datum: Nad 83 UTM Zone 10

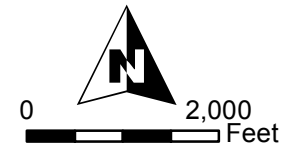
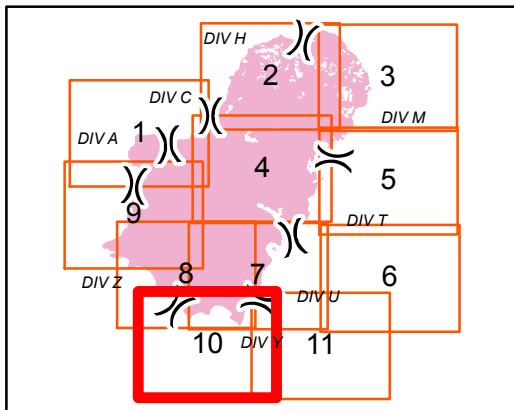


# IAP MAP

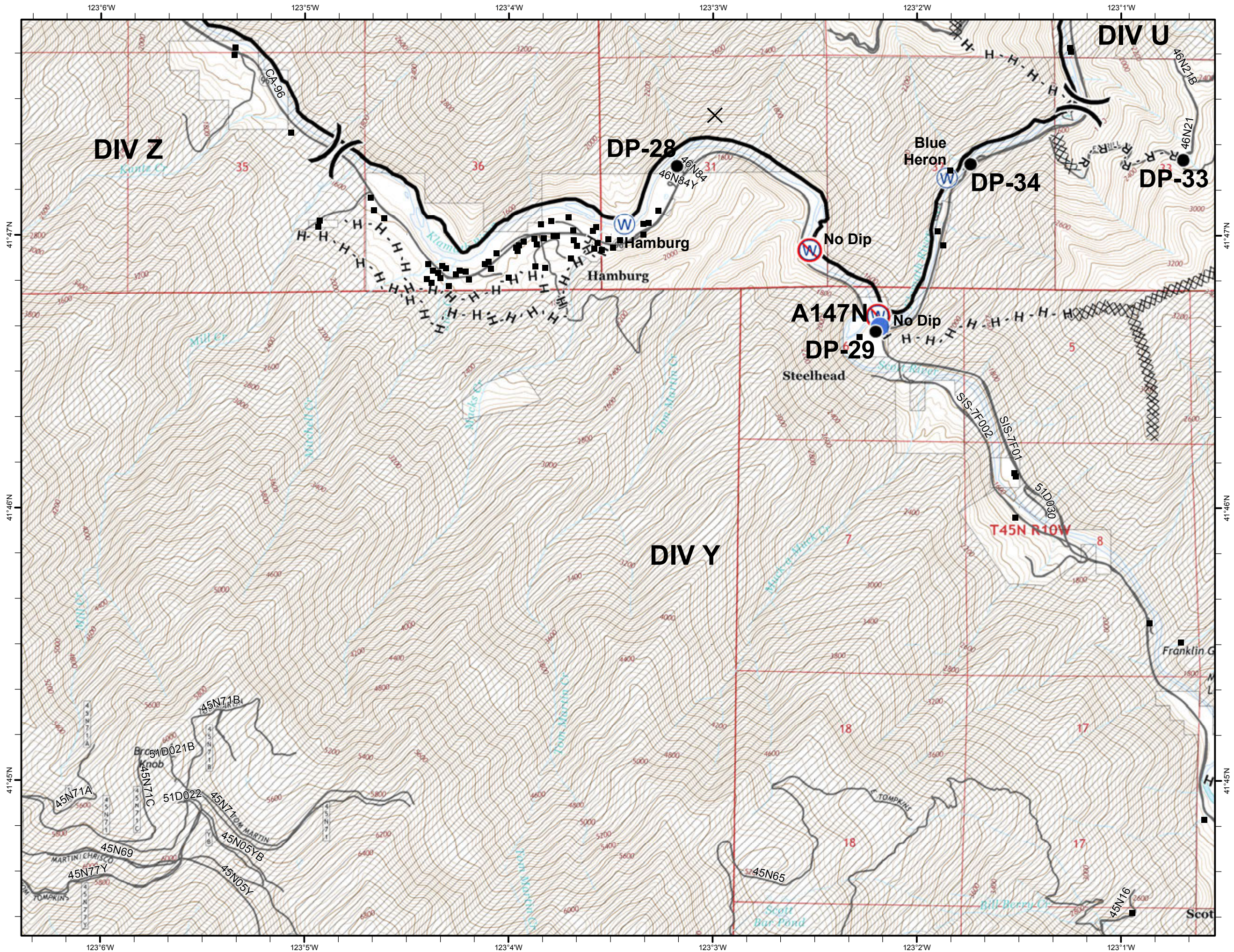
GAP FIRE  
 CA-KNF-007501  
 SEPTEMBER 16, 2016  
 33,867 ACRES  
 AS OF 9/12 @ 1127 HRS.  
 PAGE 10 OF 11



- XXXX Completed Dozer Line
- Completed Line
- H - Hand Line
- R - Road as Completed Line
- Drop Point
- Helispot
- W Water Source
- W Restricted Water Source
- ) Division
- Structure
- USDA FOREST SERVICE



Map Datum: Nad 83 UTM Zone 10



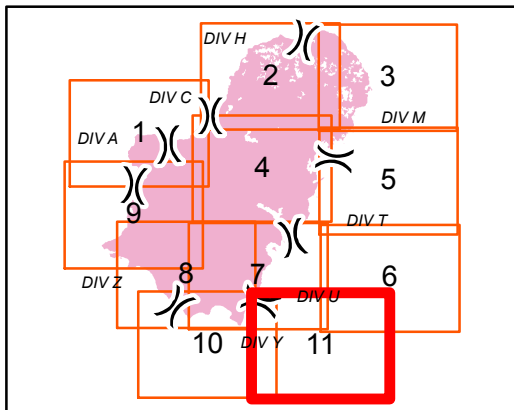


# IAP MAP

GAP FIRE  
 CA-KNF-007501  
 SEPTEMBER 16, 2016  
 33,867 ACRES  
 AS OF 9/12 @ 1127 HRS.  
 PAGE 11 OF 11



- XXXX Completed Dozer Line
- Completed Line
- H - Hand Line
- R - Road as Completed Line
- Drop Point
- ⊕ Water Source
- ) Division
- Structure
- ▨ USDA FOREST SERVICE



Map Datum: Nad 83 UTM Zone 10

