

# IAP MAP

GAP FIRE  
CA-KNF-007501  
SEPTEMBER 17, 2016

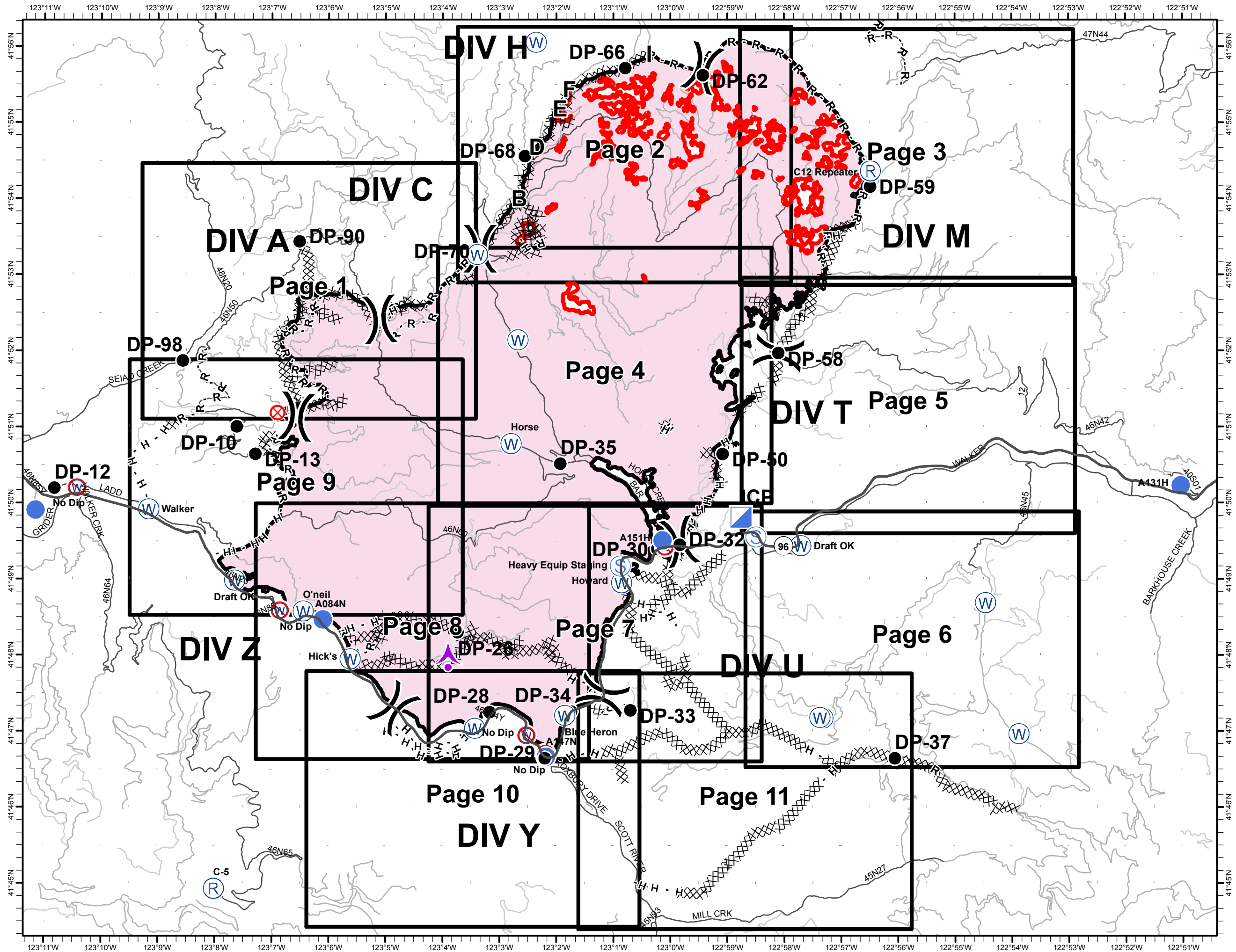
33,867 ACRES  
AS OF 9/12 @ 1127 HRS.

INDEX PAGE



- Fire Perimeter
- Uncontrolled Fire Edge
- Completed Dozer Line
- Completed Line
- H - H Hand Line
- R - R Road as Completed Line
- Division
- Aerial Hazard
- Drop Point
- Fire Origin
- Helispot
- Incident Command Post
- Repeater
- Staging Area
- Water Source
- Restricted Water Source
- Major Roads
- High Clearance Roads
- Closed Roads

0 1 2 Miles

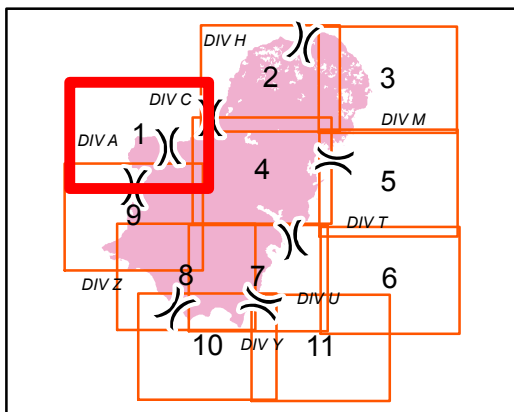


# IAP MAP

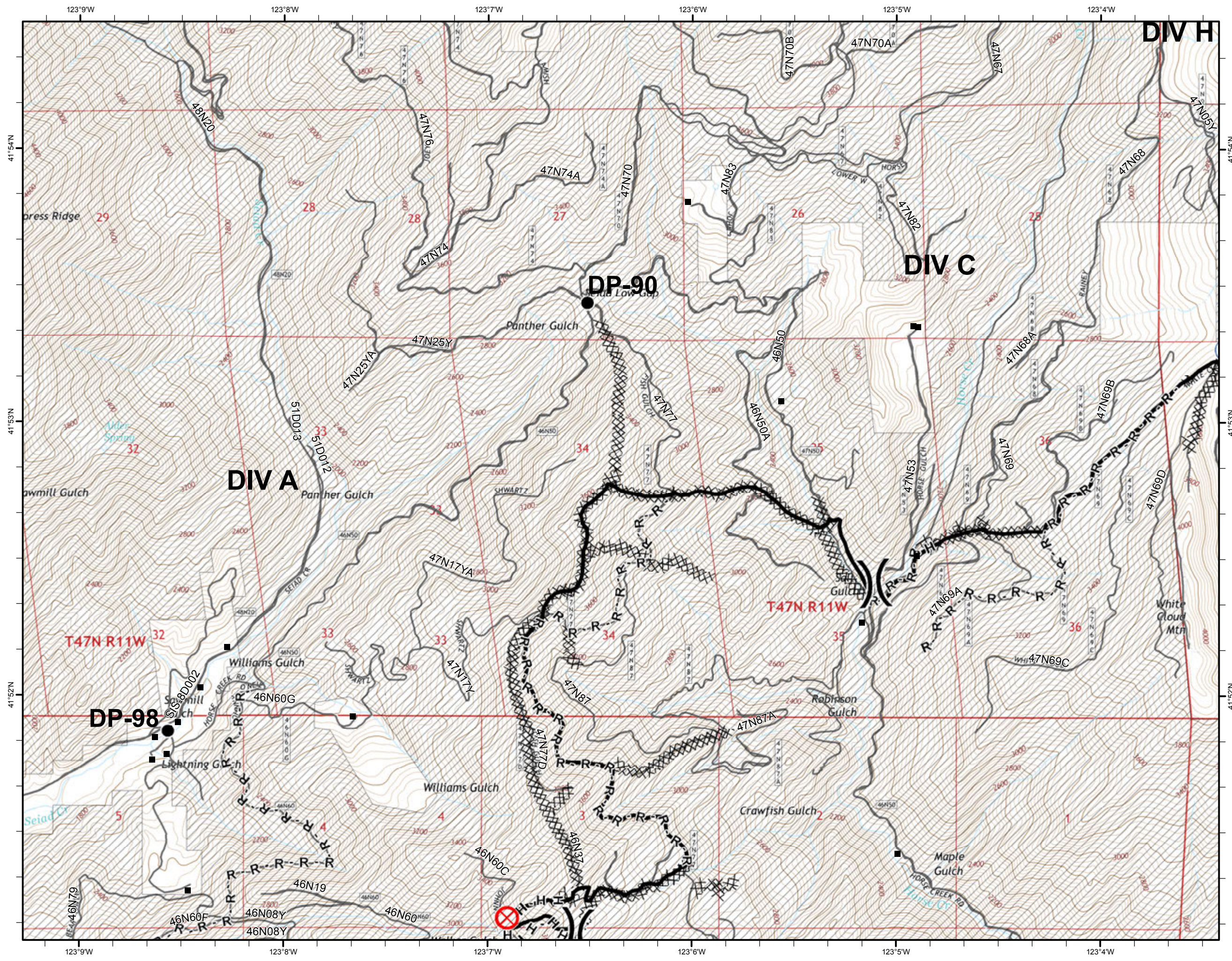
GAP FIRE  
CA-KNF-007501  
SEPTEMBER 17, 2016  
33,867 ACRES  
AS OF 9/12 @ 1127 HRS.  
PAGE 1 OF 11



- XXXX Completed Dozer Line
- Completed Line
- H - Hand Line
- R - Road as Completed Line
- Drop Point
- ⊗ Fire Origin
- ⊙ Water Source
- ) Division
- Structure
- ▨ USDA FOREST SERVICE



Map Datum: Nad 83 UTM Zone 10

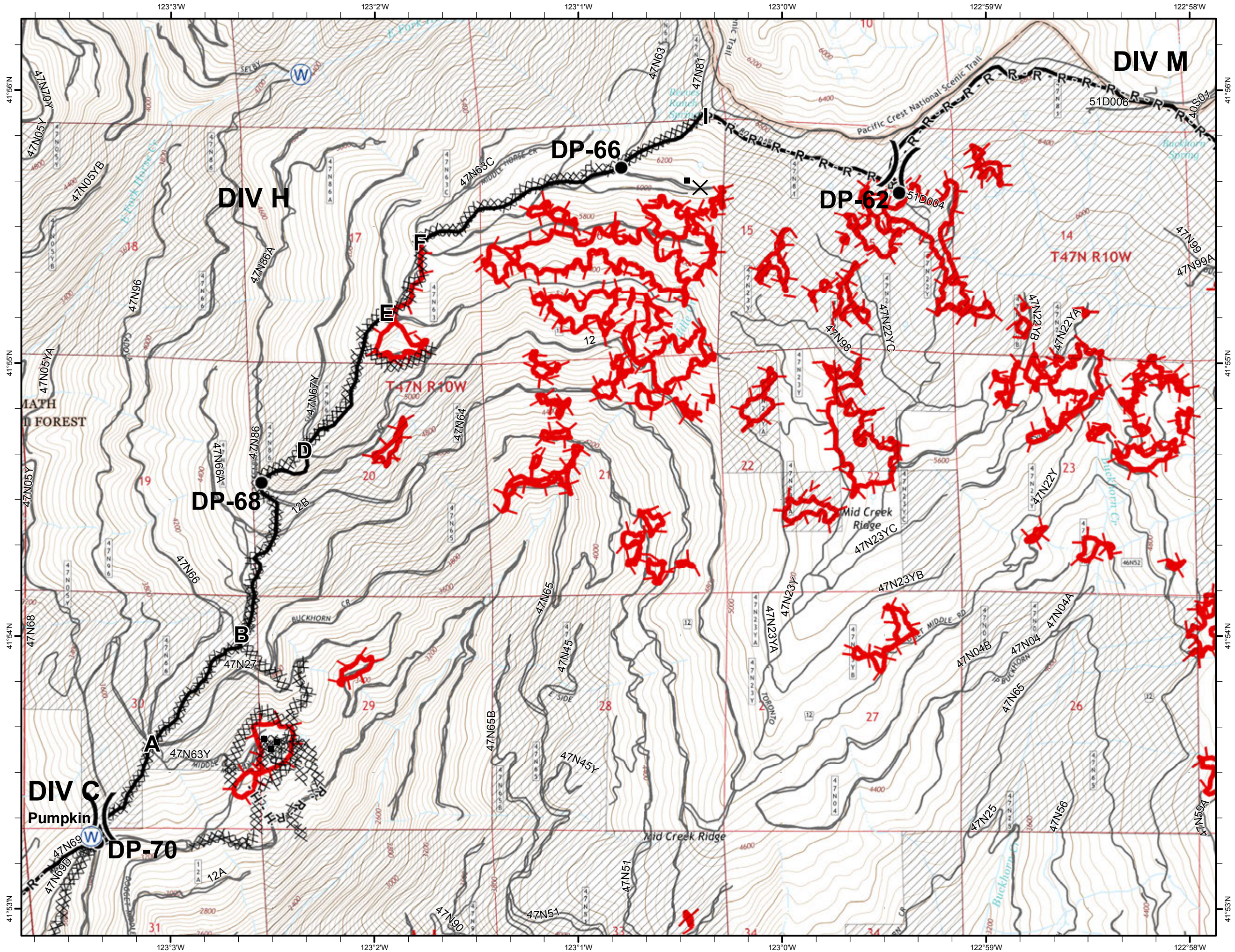
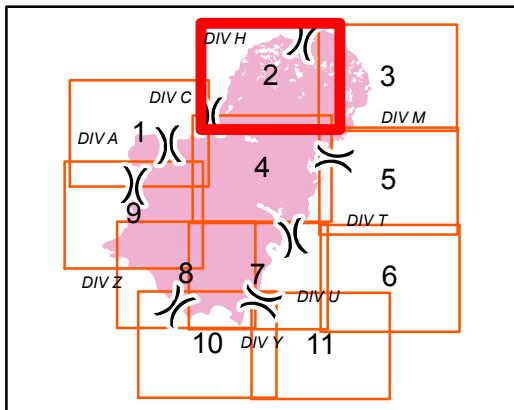


# IAP MAP

GAP FIRE  
CA-KNF-007501  
SEPTEMBER 17, 2016  
33,867 ACRES  
AS OF 9/12 @ 1127 HRS.  
PAGE 2 OF 11



- Uncontrolled Fire Edge
- Completed Dozer Line
- Completed Line
- Hand Line
- Road as Completed Line
- Drop Point
- Water Source
- Division
- Structure
- USDA FOREST SERVICE

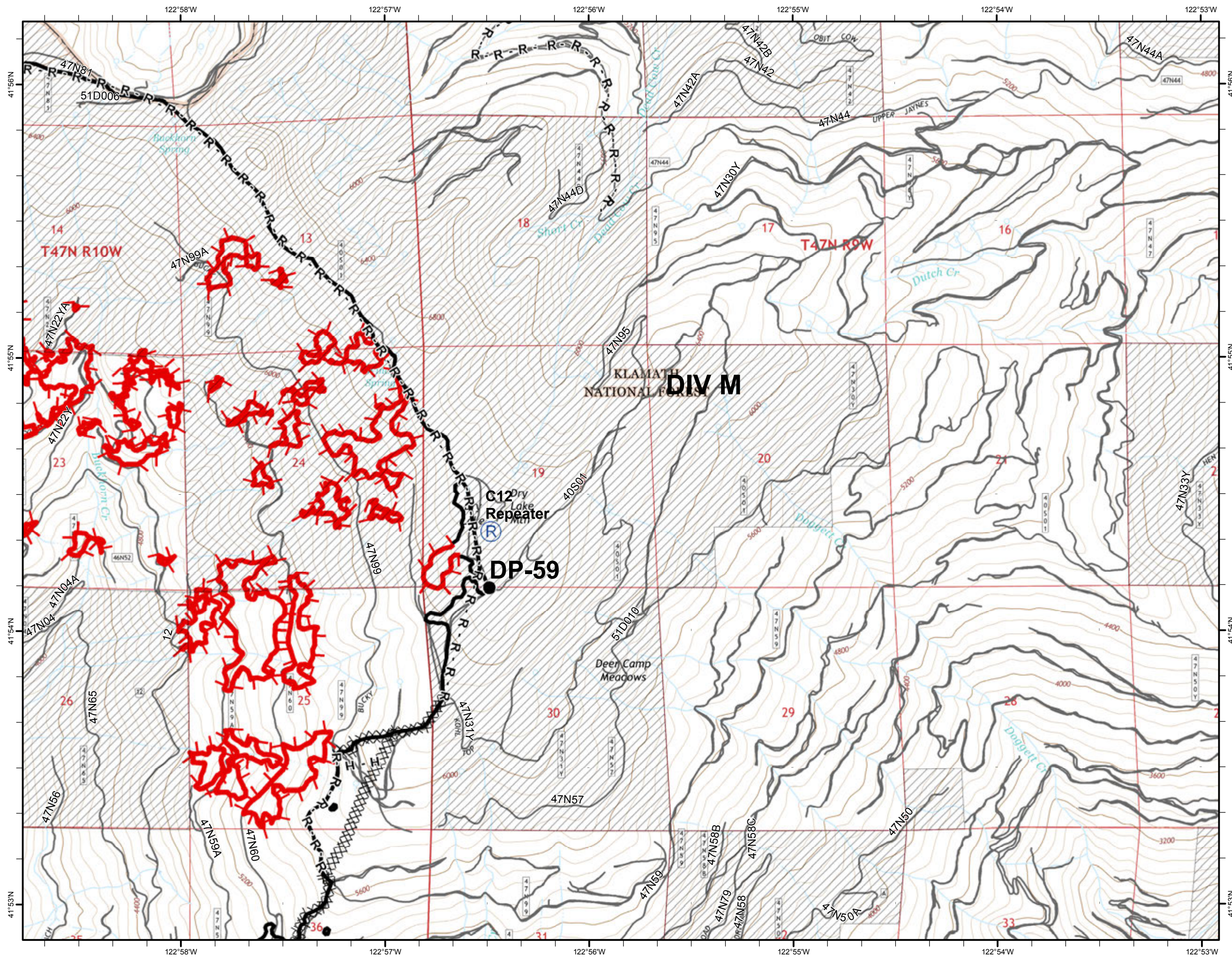
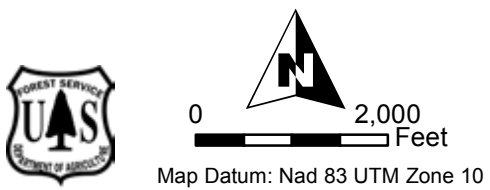
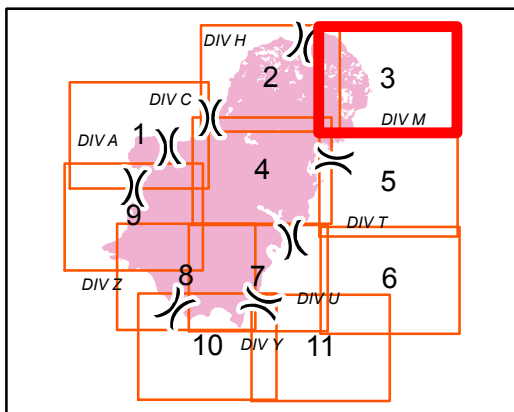


# IAP MAP

GAP FIRE  
 CA-KNF-007501  
 SEPTEMBER 17, 2016  
 33,867 ACRES  
 AS OF 9/12 @ 1127 HRS.  
 PAGE 3 OF 11

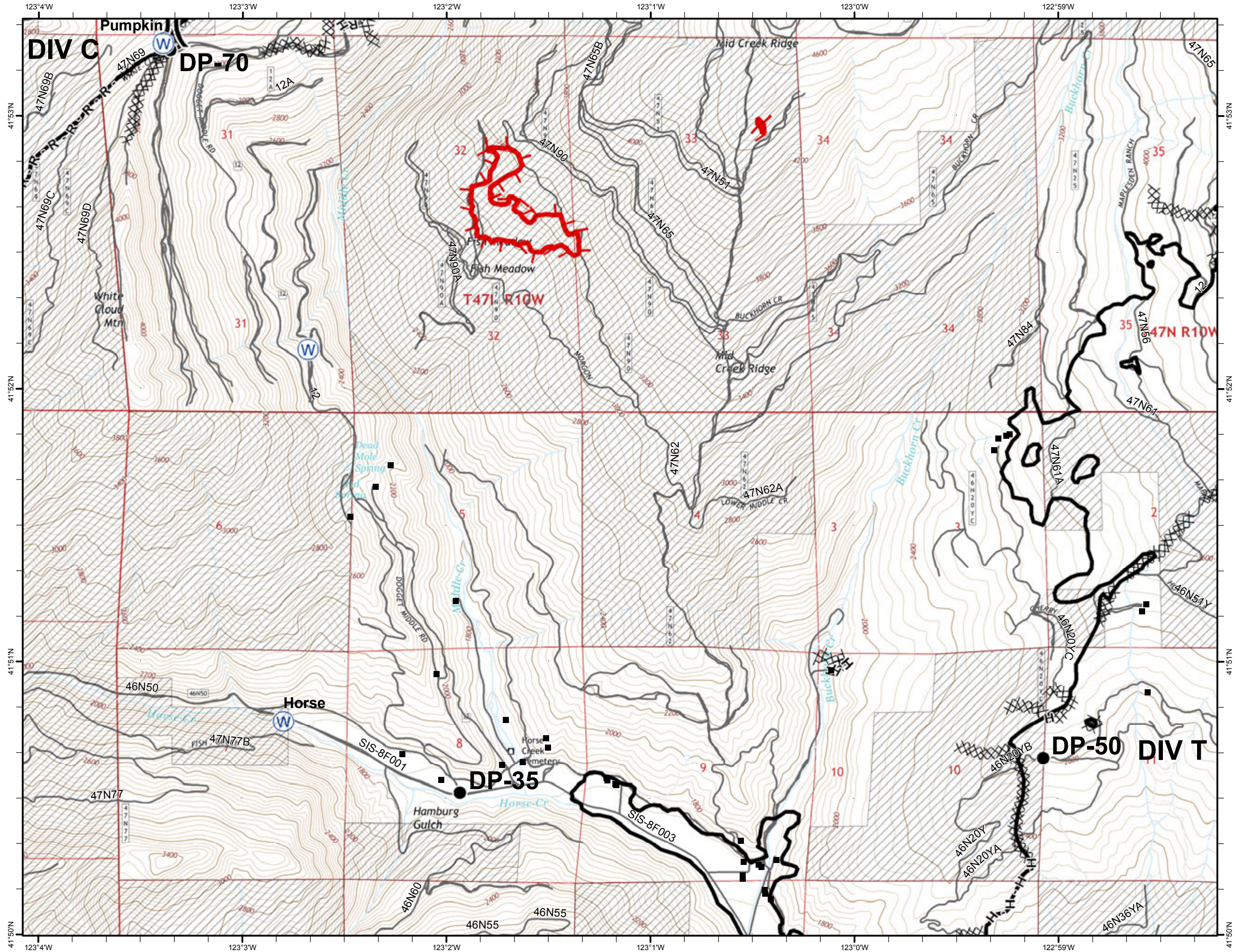


- Uncontrolled Fire Edge
- Completed Dozer Line
- Completed Line
- Hand Line
- R - Road as Completed Line
- Drop Point
- Repeater
- Division
- USDA FOREST SERVICE

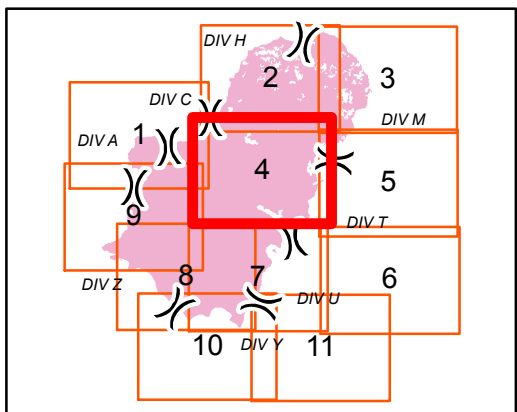


# IAP MAP

GAP FIRE  
 CA-KNF-007501  
 SEPTEMBER 17, 2016  
 33,867 ACRES  
 AS OF 9/12 @ 1127 HRS.  
 PAGE 4 OF 11



- Uncontrolled Fire Edge
- Completed Dozer Line
- Completed Line
- Hand Line
- Road as Completed Line
- Drop Point
- Water Source
- Division
- Structure
- USDA FOREST SERVICE



Map Datum: Nad 83 UTM Zone 10

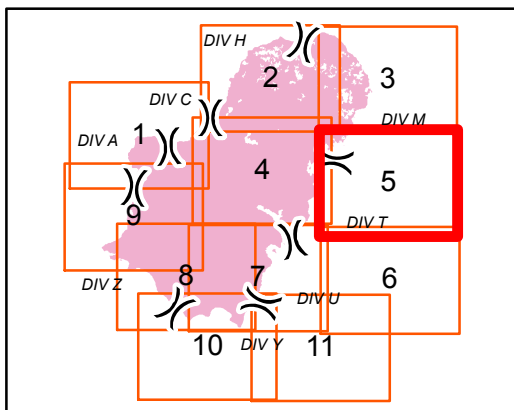


# IAP MAP

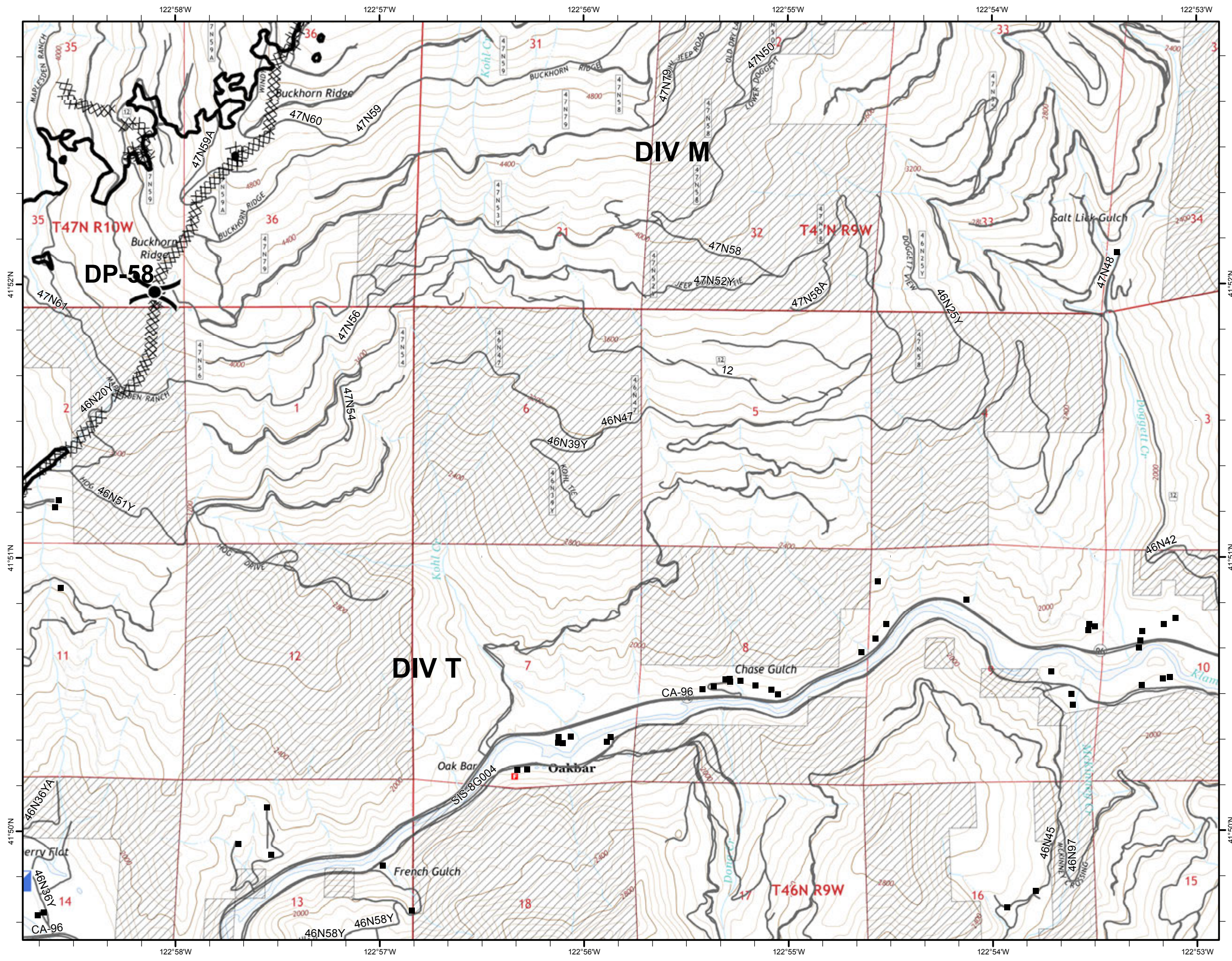
GAP FIRE  
CA-KNF-007501  
SEPTEMBER 17, 2016  
33,867 ACRES  
AS OF 9/12 @ 1127 HRS.  
PAGE 5 OF 11



- XXXX Completed Dozer Line
- Completed Line
- Drop Point
- ▣ Incident Command Post
- ) Division
- Structure
- ▨ USDA FOREST SERVICE



Map Datum: Nad 83 UTM Zone 10

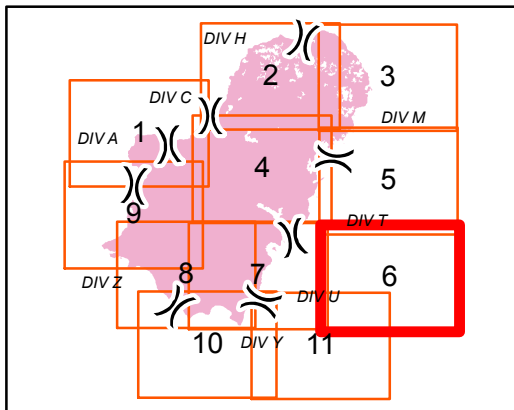


# IAP MAP

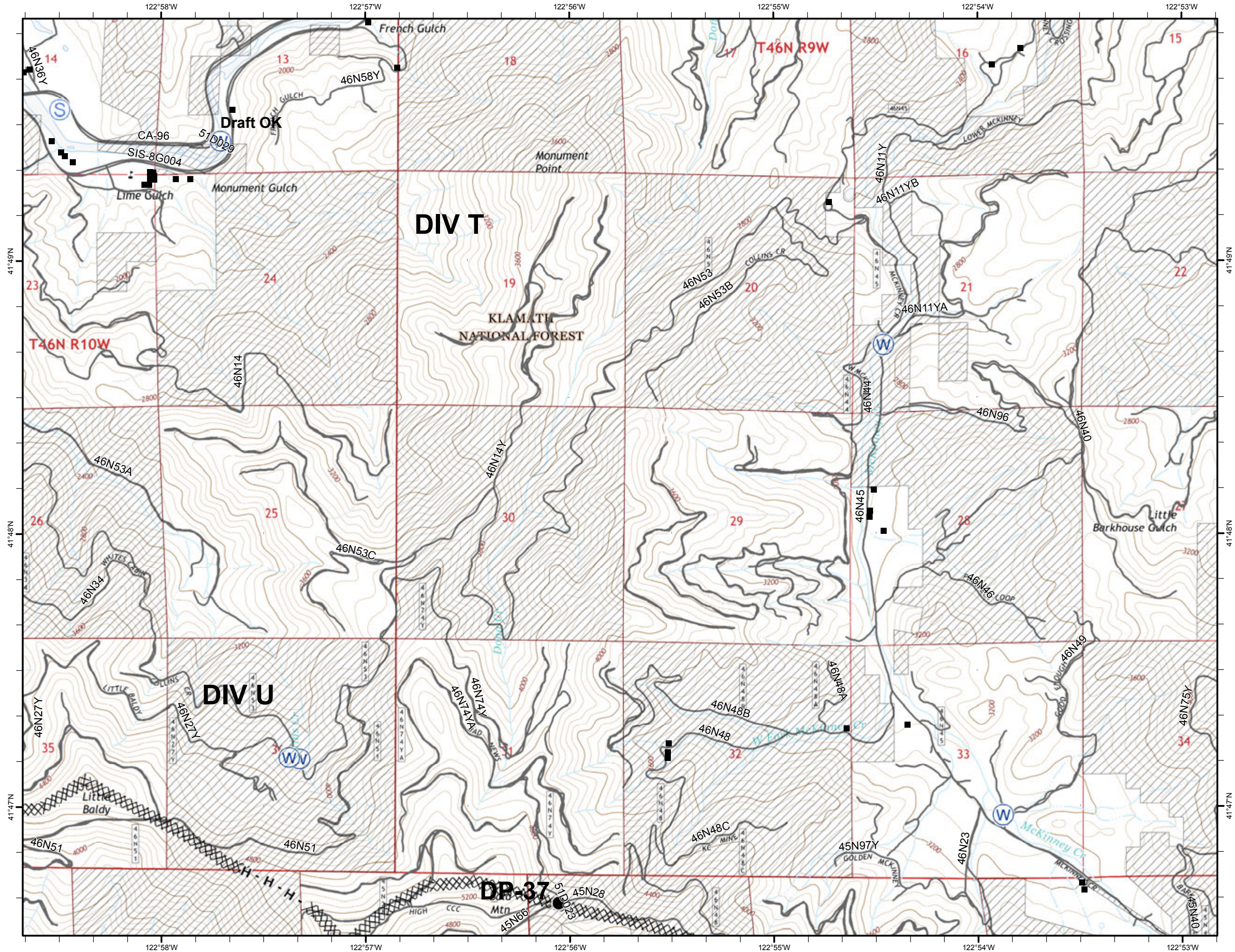
GAP FIRE  
CA-KNF-007501  
SEPTEMBER 17, 2016  
33,867 ACRES  
AS OF 9/12 @ 1127 HRS.  
PAGE 6 OF 11



- XXXX Completed Dozer Line
- H - Hand Line
- Drop Point
- S Staging Area
- W Water Source
- ) Division
- Structure
- USDA FOREST SERVICE



Map Datum: Nad 83 UTM Zone 10

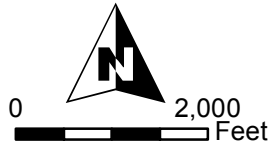
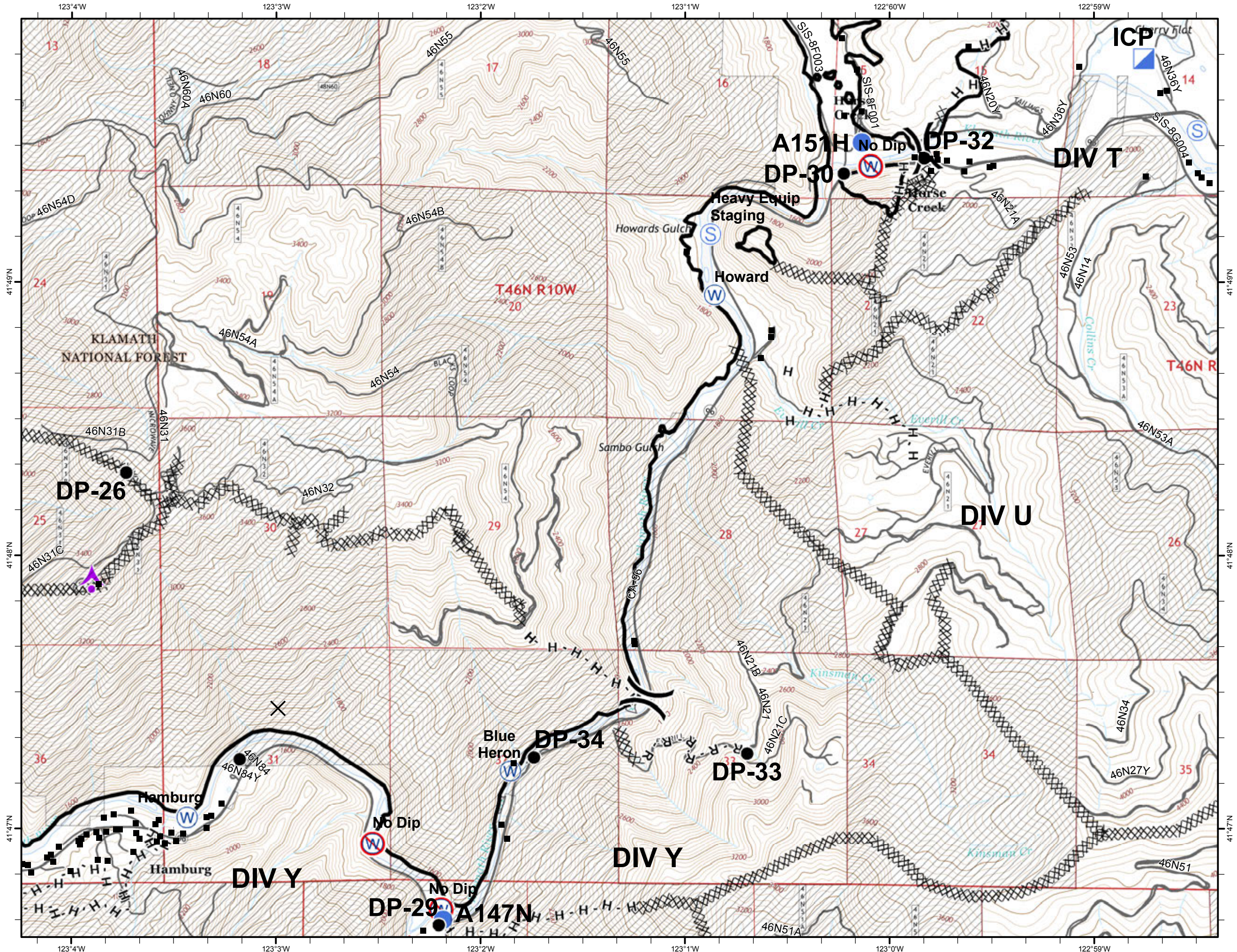
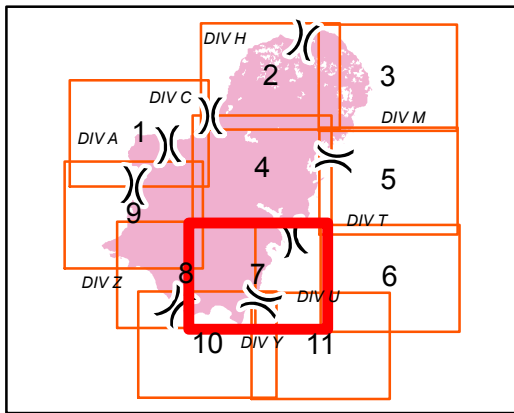


# IAP MAP

GAP FIRE  
CA-KNF-007501  
SEPTEMBER 17, 2016  
33,867 ACRES  
AS OF 9/12 @ 1127 HRS.  
PAGE 7 OF 11



- XXXX Completed Dozer Line
- Completed Line
- H - Hand Line
- R - Road as Completed Line
- ▲ Aerial Hazard
- Drop Point
- Helispot
- ▣ Incident Command Post
- ⊙ Staging Area
- ⊙ Water Source
- ⊙ Restricted Water Source
- ) ( Division
- Structure
- ▨ USDA FOREST SERVICE



Map Datum: Nad 83 UTM Zone 10

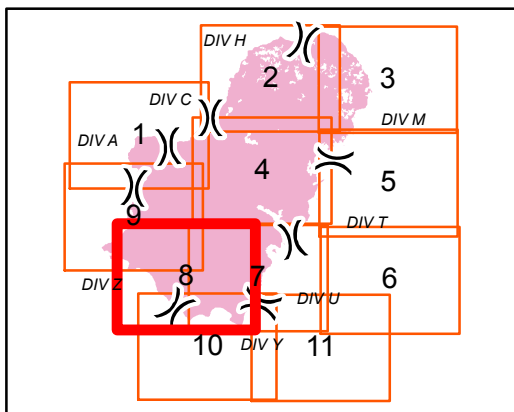


# IAP MAP

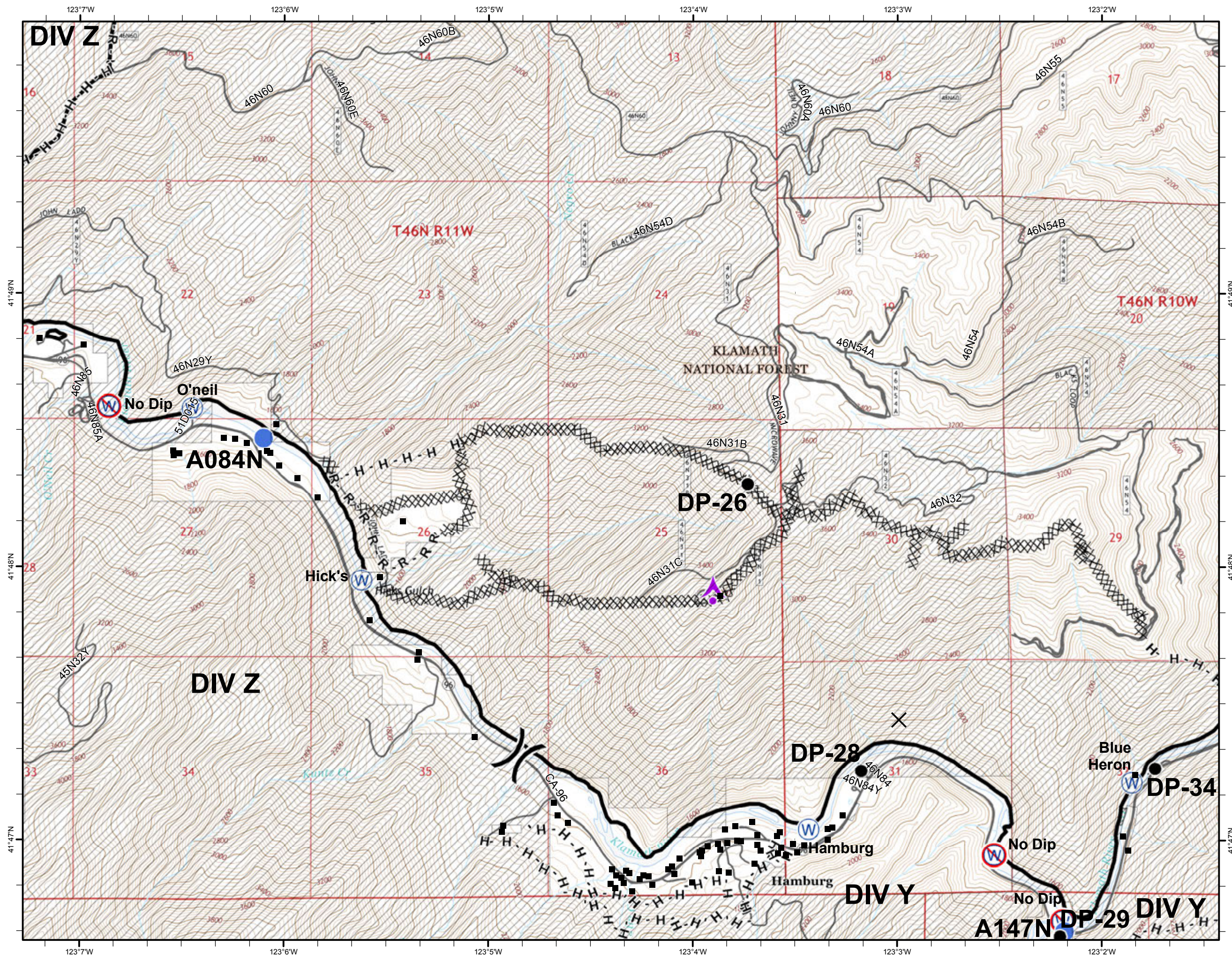
GAP FIRE  
 CA-KNF-007501  
 SEPTEMBER 17, 2016  
 33,867 ACRES  
 AS OF 9/12 @ 1127 HRS.  
 PAGE 8 OF 11



- XXXX Completed Dozer Line
- Completed Line
- H - Hand Line
- R - Road as Completed Line
- Aerial Hazard
- Drop Point
- Helispot
- Water Source
- Restricted Water Source
- Division
- Structure
- USDA FOREST SERVICE



Map Datum: Nad 83 UTM Zone 10

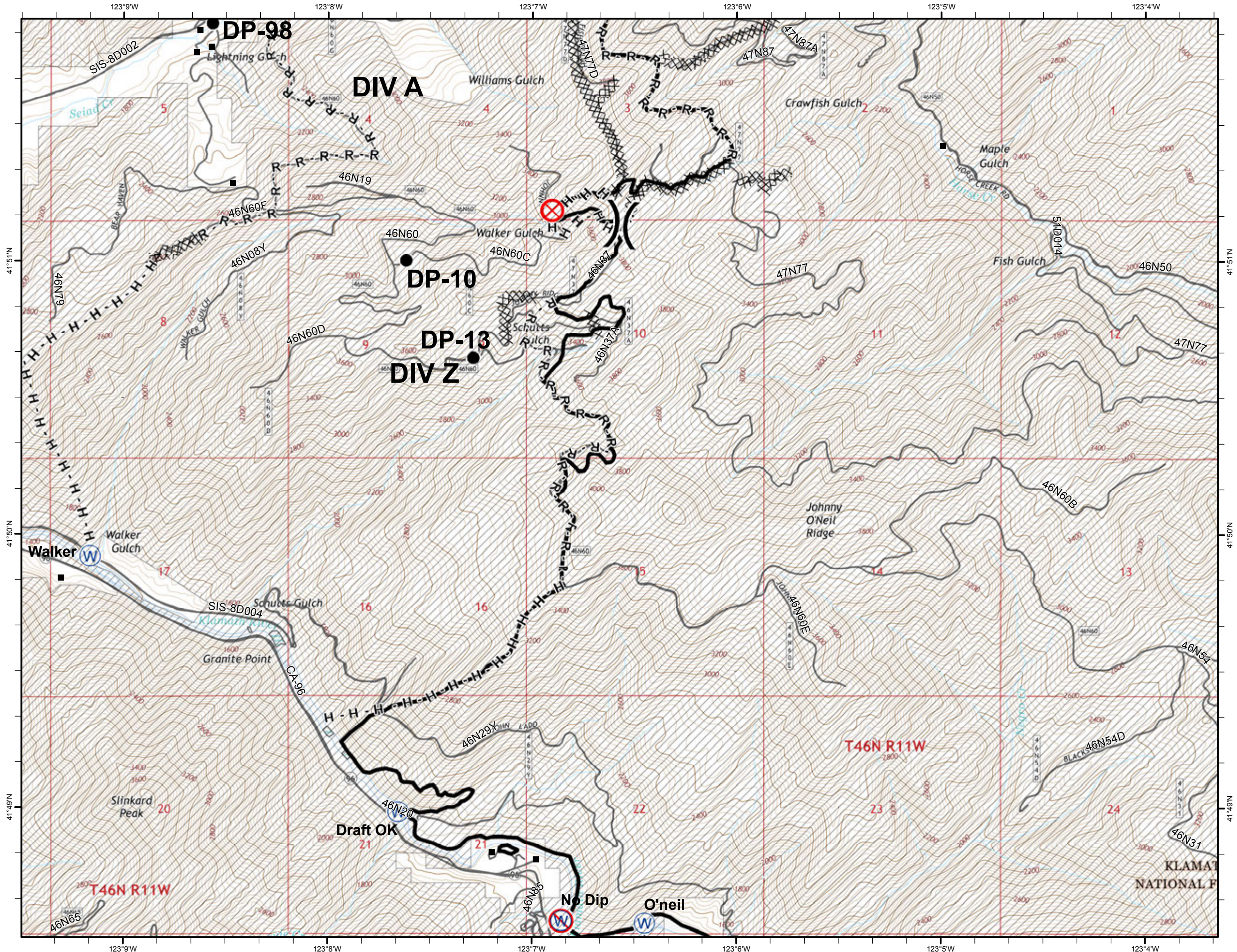
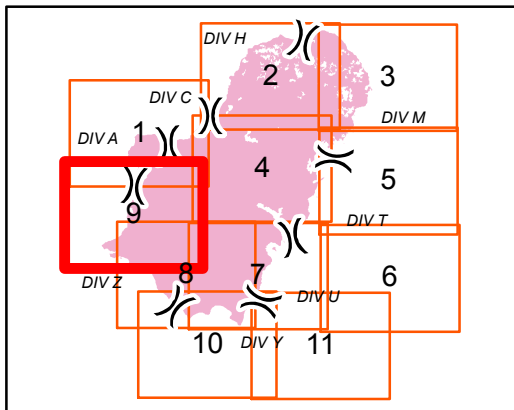


# IAP MAP

GAP FIRE  
 CA-KNF-007501  
 SEPTEMBER 17, 2016  
 33,867 ACRES  
 AS OF 9/12 @ 1127 HRS.  
 PAGE 9 OF 11



- Completed Dozer Line
- Completed Line
- Hand Line
- Road as Completed Line
- Drop Point
- Fire Origin
- Water Source
- Restricted Water Source
- Division
- Structure
- USDA FOREST SERVICE



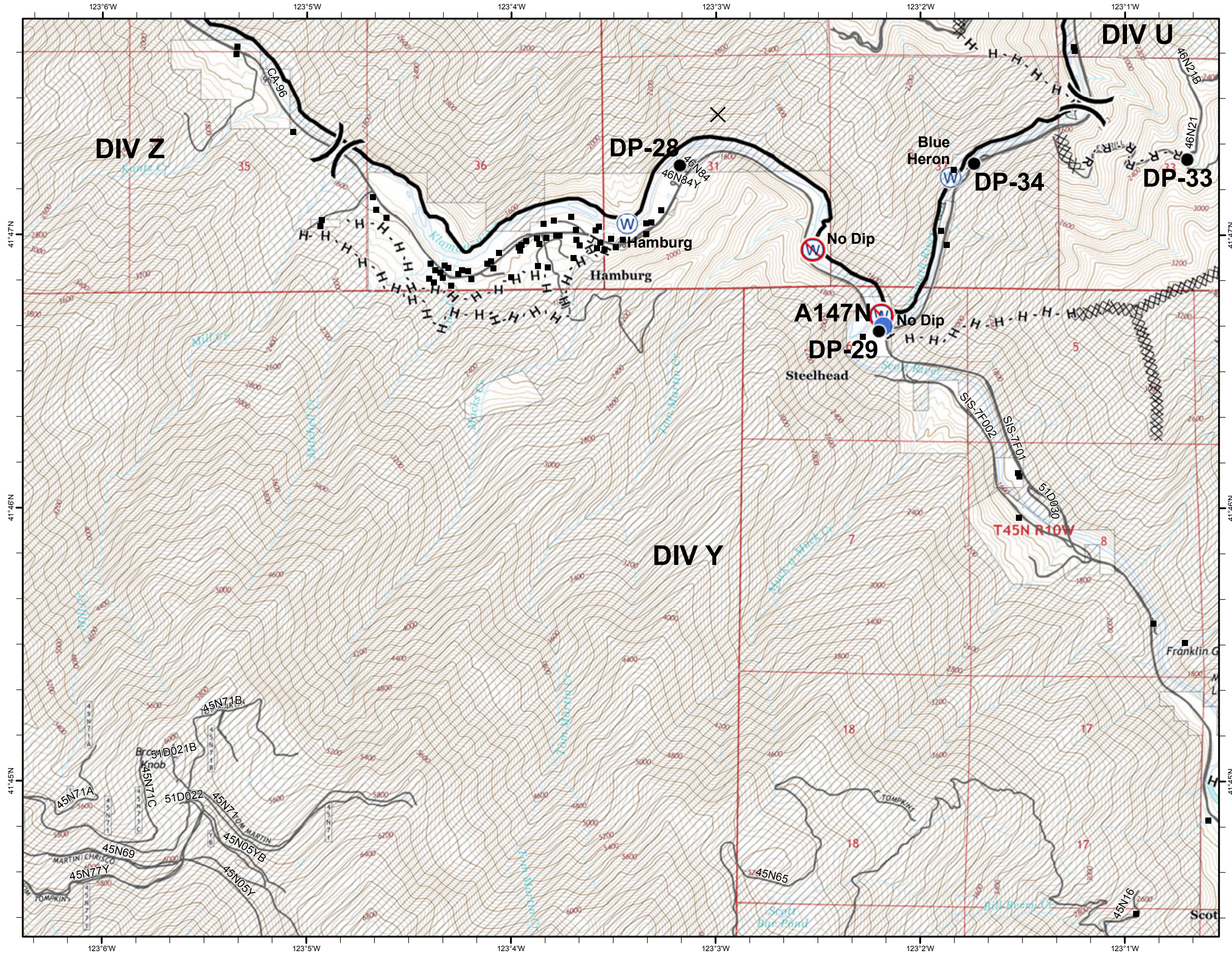
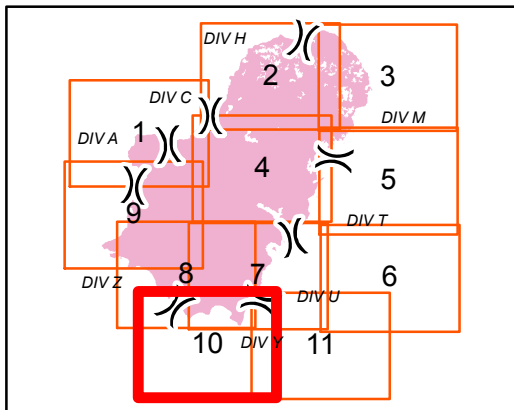
0 2,000 Feet  
 Map Datum: Nad 83 UTM Zone 10

# IAP MAP

GAP FIRE  
 CA-KNF-007501  
 SEPTEMBER 17, 2016  
 33,867 ACRES  
 AS OF 9/12 @ 1127 HRS.  
 PAGE 10 OF 11



- XXXX Completed Dozer Line
- Completed Line
- H - Hand Line
- R - Road as Completed Line
- Drop Point
- Helispot
- W Water Source
- W Restricted Water Source
- ) Division
- Structure
- USDA FOREST SERVICE



0 2,000 Feet

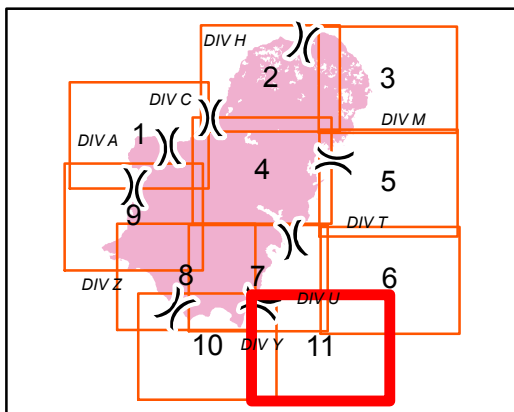
Map Datum: Nad 83 UTM Zone 10

# IAP MAP

GAP FIRE  
 CA-KNF-007501  
 SEPTEMBER 17, 2016  
 33,867 ACRES  
 AS OF 9/12 @ 1127 HRS.  
 PAGE 11 OF 11



- XXXX Completed Dozer Line
- Completed Line
- H - Hand Line
- R - Road as Completed Line
- Drop Point
- ⊙ Water Source
- ) Division
- Structure
- ▨ USDA FOREST SERVICE



Map Datum: Nad 83 UTM Zone 10

