

123°7'30"W 123°6'0"W 123°4'30"W 123°3'0"W 123°1'30"W 123°0'0"W 122°58'30"W 122°57'0"W

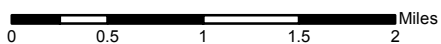


### Infrared Map

**Gap**  
CA-KNF-007501  
IR Flight: September 11, 2016 2254 PDT  
Acres : 32,759  
Interpreter : Jim Grace

-  Intense Heat
-  Heat Perimeter
-  Isolated Heat
-  Scattered Heat

Lat/Long  
GCS WGS84  
30 second spacing



41°57'0"N

41°55'30"N

41°54'0"N

41°52'30"N

41°51'0"N

41°49'30"N

41°48'0"N

41°46'30"N

41°45'0"N

41°57'0"N

41°55'30"N

41°54'0"N

41°52'30"N

41°51'0"N

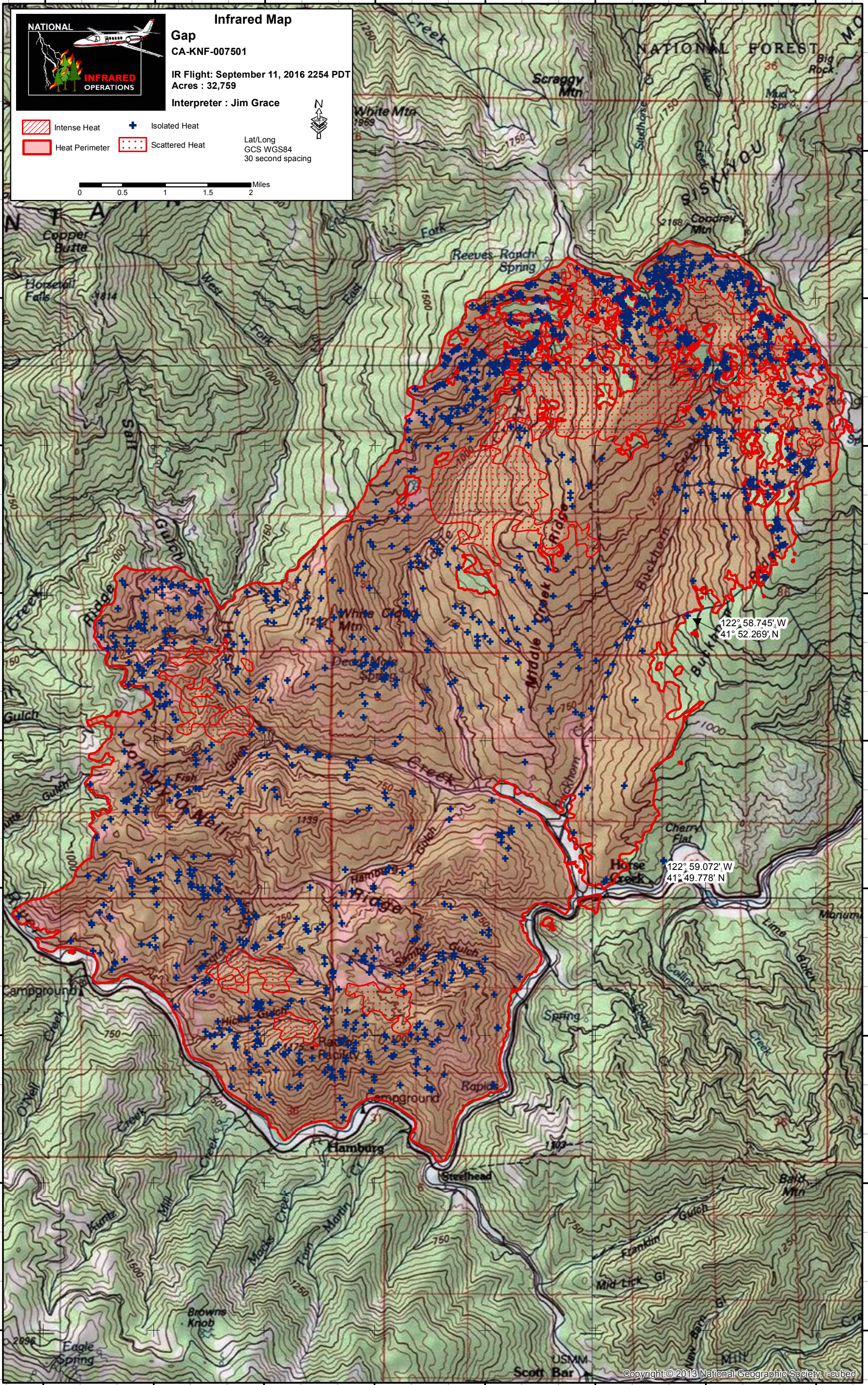
41°49'30"N

41°48'0"N

41°46'30"N

41°45'0"N

123°7'30"W 123°6'0"W 123°4'30"W 123°3'0"W 123°1'30"W 123°0'0"W 122°58'30"W 122°57'0"W



122° 58.745' W  
41° 52.269' N

122° 59.072' W  
41° 49.778' N