

August 31, 2016

WFDSS - FSPRO PROBABILITY: KNF GAP Fire (2016-CAKNF-007501)

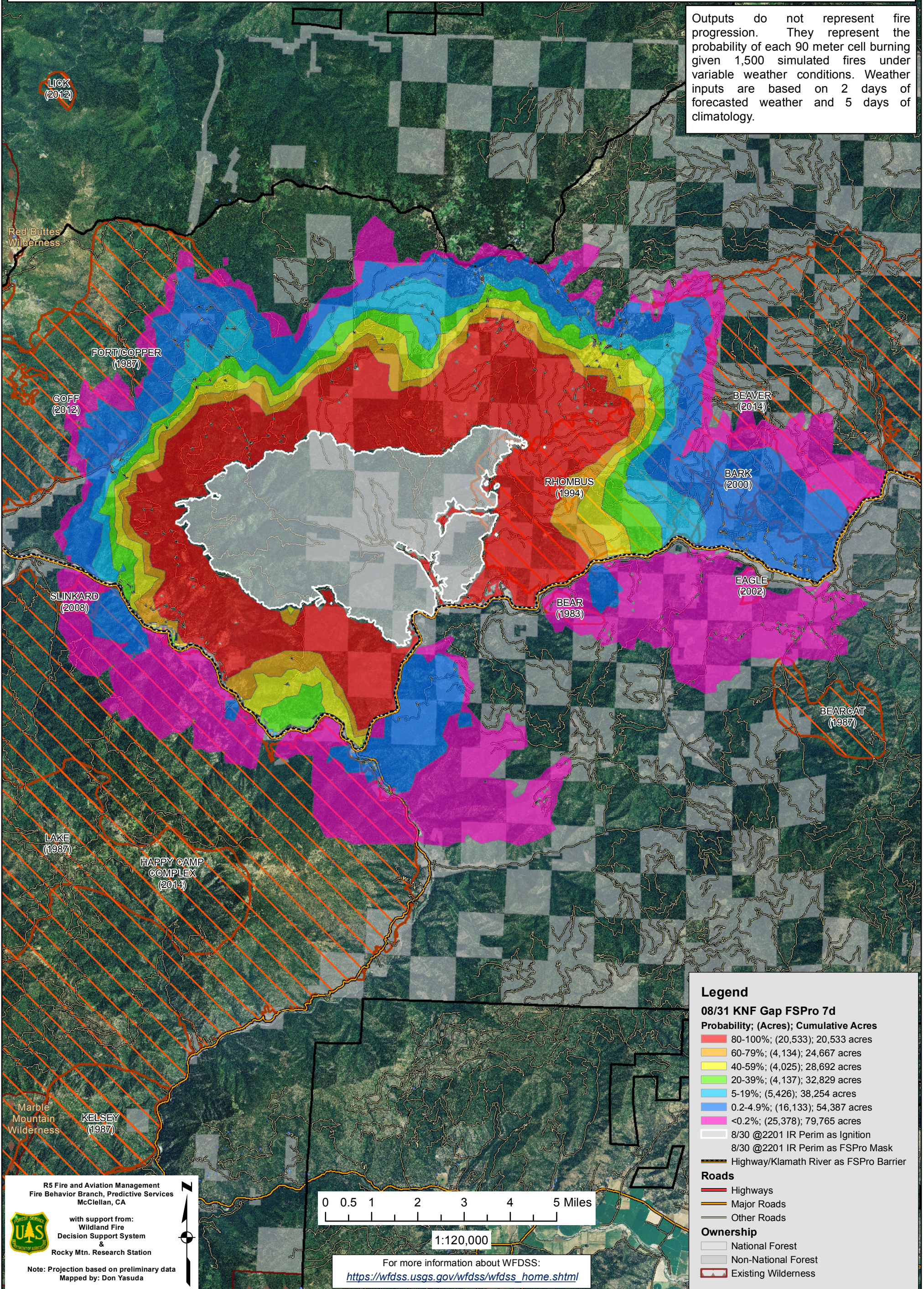
08/31 - 7 DAYS - 90m Res; 1500 Fire Sim

ERC: 40218 - OAK KNOLL (13.8 miles) ; WINDS: 40218 - OAK KNOLL (13.8 miles)

File: August 31 Updated 7 day FSPro; Analyst: Larry Hood

Notes: Updated 7 day FSPro analysis. Uses 8.30 2201 IR perimeter as ignition file but excludes the two spot fires south of Hwy 96 as they are lined. Line barrier file used on Highway/Klamath River. Fire has spotted across this twice but want to evaluate locations where it may spot across in the future. Model assumes no suppression action.

Outputs do not represent fire progression. They represent the probability of each 90 meter cell burning given 1,500 simulated fires under variable weather conditions. Weather inputs are based on 2 days of forecasted weather and 5 days of climatology.



Legend

08/31 KNF Gap FSPro 7d

Probability; (Acres); Cumulative Acres

- 80-100%; (20,533); 20,533 acres
- 60-79%; (4,134); 24,667 acres
- 40-59%; (4,025); 28,692 acres
- 20-39%; (4,137); 32,829 acres
- 5-19%; (5,426); 38,254 acres
- 0.2-4.9%; (16,133); 54,387 acres
- <0.2%; (25,378); 79,765 acres

- 8/30 @2201 IR Perim as Ignition
- 8/30 @2201 IR Perim as FSPro Mask
- Highway/Klamath River as FSPro Barrier

Roads

- Highways
- Major Roads
- Other Roads

Ownership

- National Forest
- Non-National Forest
- Existing Wilderness

R5 Fire and Aviation Management
Fire Behavior Branch, Predictive Services
McClellan, CA

with support from:
Wildland Fire
Decision Support System
&
Rocky Mtn. Research Station

Note: Projection based on preliminary data
Mapped by: Don Yasuda

0 0.5 1 2 3 4 5 Miles

1:120,000

For more information about WFDSS:
https://wfdss.usgs.gov/wfdss/wfdss_home.shtml