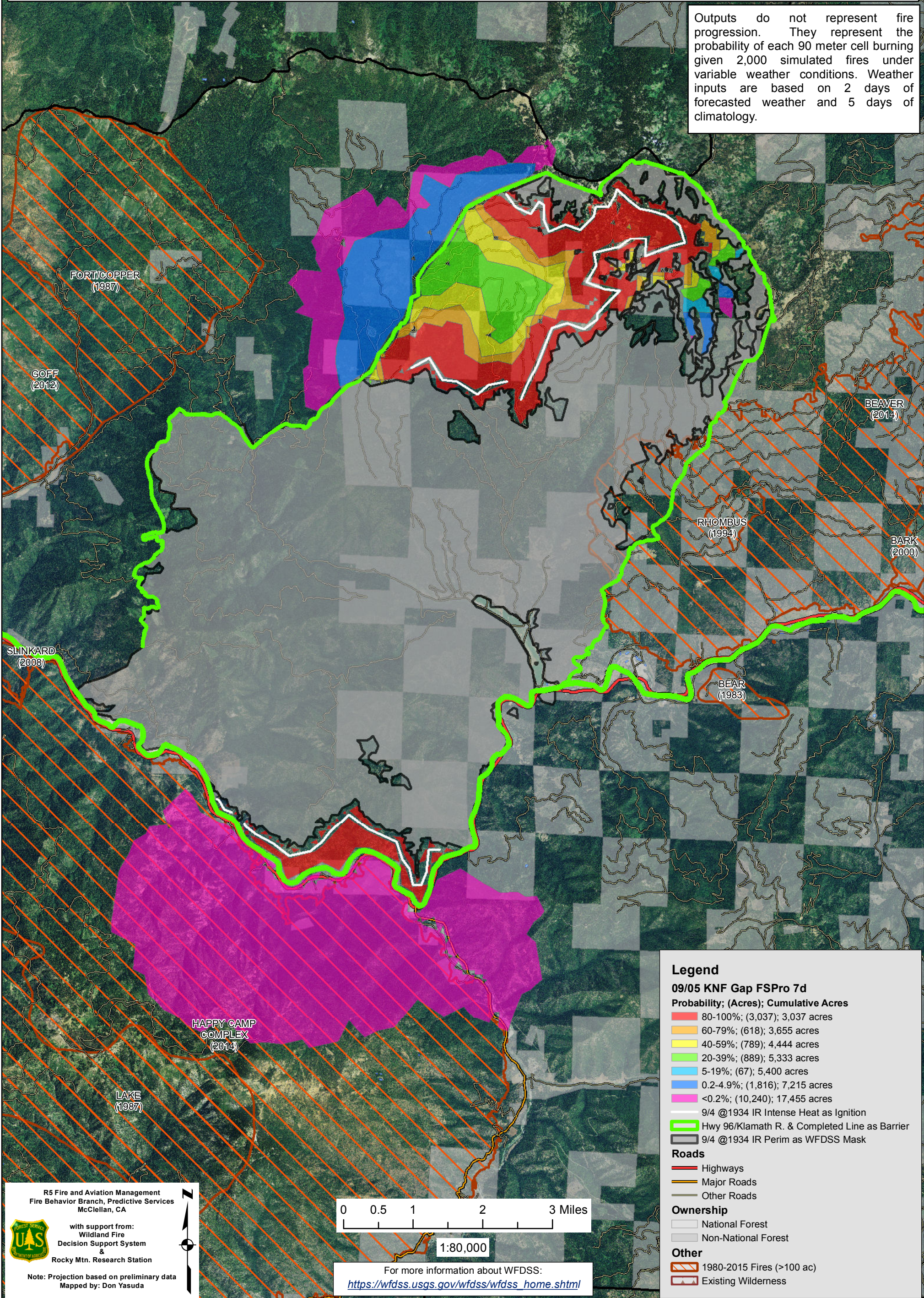


September 05, 2016

WFDSS - FSPRO PROBABILITY: KNF GAP Fire (2016-CAKNF-007501)
09/05 - 7 DAYS - 90m Res; 2000 Fire Sim
ERC: 40225 - SLATER BUTTE (12.1 miles); WINDS: 40225 - SLATER BUTTE (12.1 miles)
File: September 5 Updated 7 day FSPro w/barriers; Analyst: Larry Hood

Notes: Updated 7 day FSPro analysis. Analysis outputs look fairly realistic based on current spread to date. Uses barrier file with both completed containment lines and Highway 96/Klamath River. Ignition file based on 9/4 1934 IR intense. Outputs highlight locations where fire is likely to cross containment line barriers (low probability). Model assumes no suppression action and does not account for ongoing firing operations.

Outputs do not represent fire progression. They represent the probability of each 90 meter cell burning given 2,000 simulated fires under variable weather conditions. Weather inputs are based on 2 days of forecasted weather and 5 days of climatology.



Legend

09/05 KNF Gap FSPro 7d

Probability; (Acres); Cumulative Acres

- 80-100%; (3,037); 3,037 acres
- 60-79%; (618); 3,655 acres
- 40-59%; (789); 4,444 acres
- 20-39%; (889); 5,333 acres
- 5-19%; (67); 5,400 acres
- 0.2-4.9%; (1,816); 7,215 acres
- <0.2%; (10,240); 17,455 acres

- 9/4 @1934 IR Intense Heat as Ignition
- Hwy 96/Klamath R. & Completed Line as Barrier
- 9/4 @1934 IR Perim as WFDSS Mask

Roads

- Highways
- Major Roads
- Other Roads

Ownership

- National Forest
- Non-National Forest

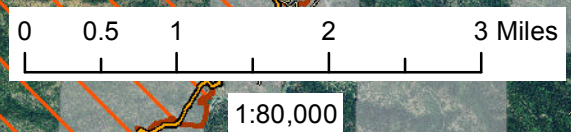
Other

- 1980-2015 Fires (>100 ac)
- Existing Wilderness

R5 Fire and Aviation Management
 Fire Behavior Branch, Predictive Services
 McClellan, CA

with support from:
 Wildland Fire
 Decision Support System
 &
 Rocky Mtn. Research Station

Note: Projection based on preliminary data
 Mapped by: Don Yasuda



For more information about WFDSS:
https://wfdss.usgs.gov/wfdss/wfdss_home.shtml