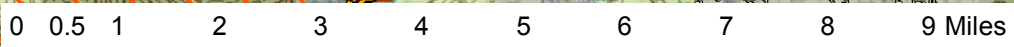
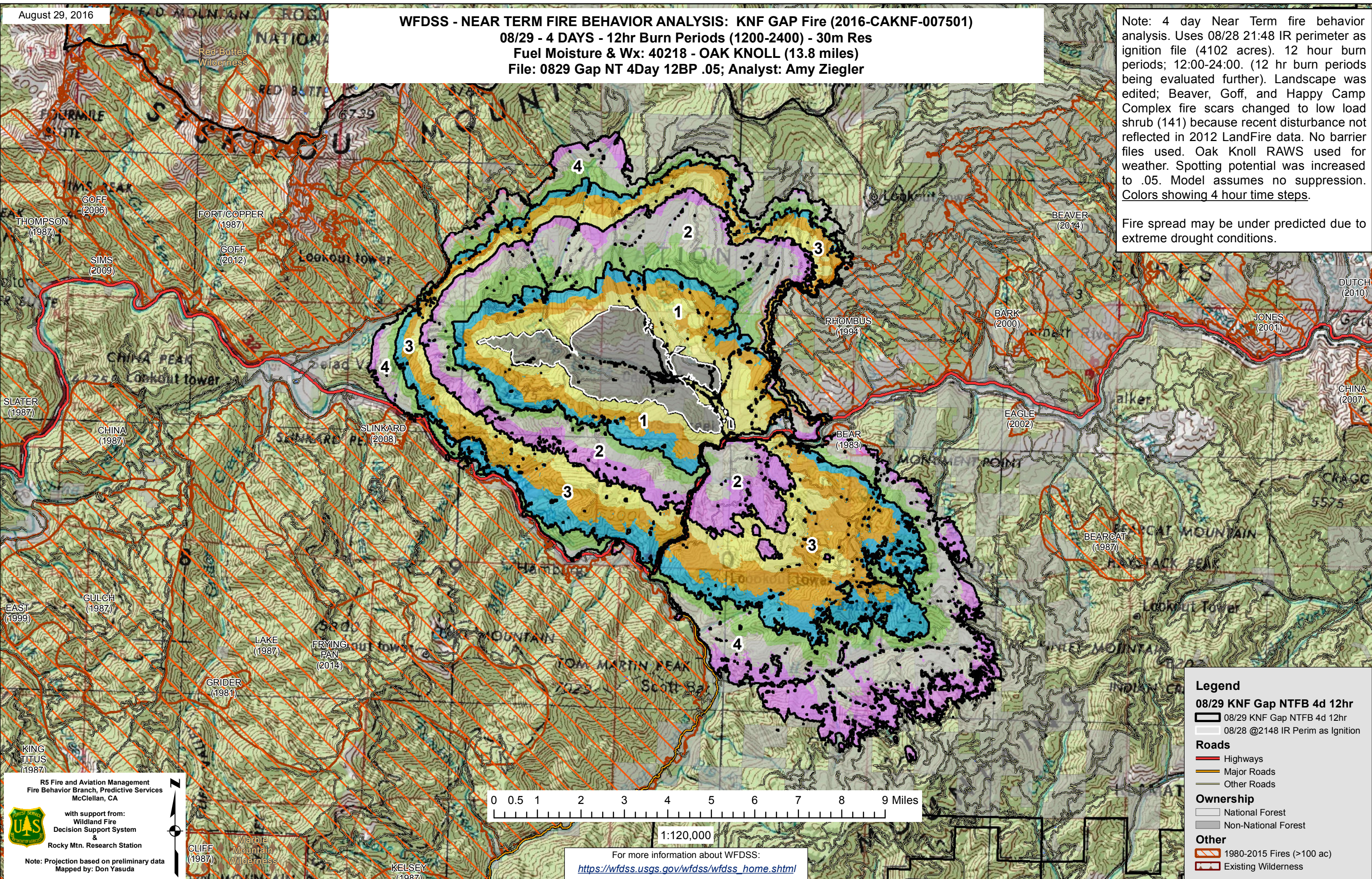


WFDSS - NEAR TERM FIRE BEHAVIOR ANALYSIS: KNF GAP Fire (2016-CAKNF-007501)
08/29 - 4 DAYS - 12hr Burn Periods (1200-2400) - 30m Res
Fuel Moisture & Wx: 40218 - OAK KNOLL (13.8 miles)
File: 0829 Gap NT 4Day 12BP .05; Analyst: Amy Ziegler

Note: 4 day Near Term fire behavior analysis. Uses 08/28 21:48 IR perimeter as ignition file (4102 acres). 12 hour burn periods; 12:00-24:00. (12 hr burn periods being evaluated further). Landscape was edited; Beaver, Goff, and Happy Camp Complex fire scars changed to low load shrub (141) because recent disturbance not reflected in 2012 LandFire data. No barrier files used. Oak Knoll RAWs used for weather. Spotting potential was increased to .05. Model assumes no suppression. Colors showing 4 hour time steps.

Fire spread may be under predicted due to extreme drought conditions.



1:120,000

For more information about WFDSS:
https://wfdss.usgs.gov/wfdss/wfdss_home.shtml

Legend

08/29 KNF Gap NTFB 4d 12hr

- 08/29 KNF Gap NTFB 4d 12hr
- 08/28 @2148 IR Perim as Ignition

Roads

- Highways
- Major Roads
- Other Roads

Ownership

- National Forest
- Non-National Forest

Other

- 1980-2015 Fires (>100 ac)
- Existing Wilderness

R5 Fire and Aviation Management
 Fire Behavior Branch, Predictive Services
 McClellan, CA

with support from:
 Wildland Fire
 Decision Support System &
 Rocky Mtn. Research Station

Note: Projection based on preliminary data
 Mapped by: Don Yasuda