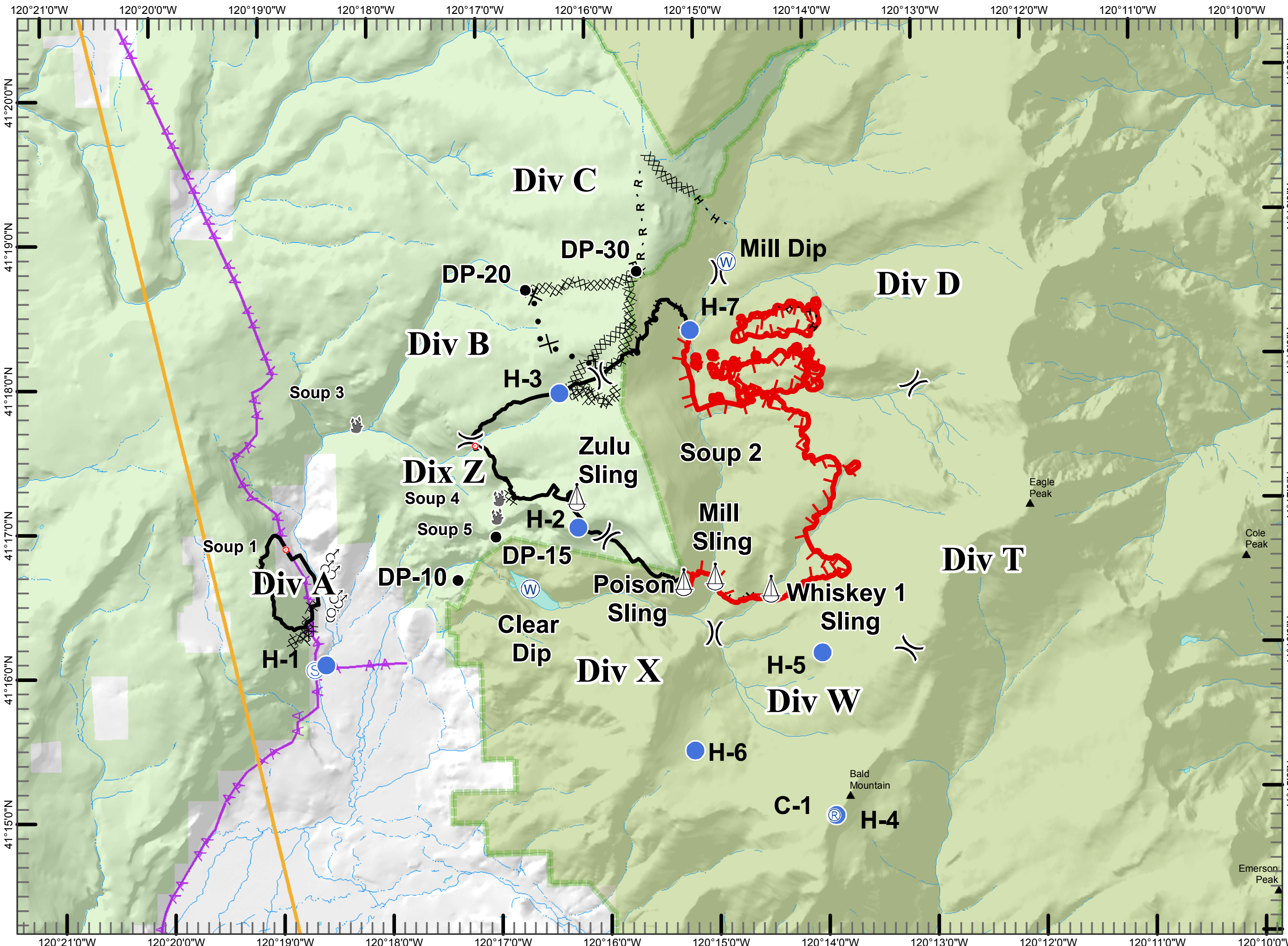
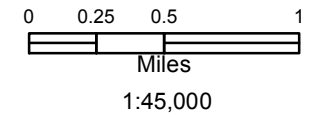


AIR OPS

Soup Complex
CA-MDF-0905
September 23, 2016



- () Division
- Uncontrolled Fire Edge
- Completed Dozer Line
- Completed Line
- H - H Hand Line
- R - R Road as Completed Line
- Proposed Dozer Line
- Drop Point
- Fire Location
- Fire Origin
- Helispot
- Repeater
- Sling Site
- Spot Fire
- Staging Area
- Water Source
- Goose MOA
- Powerlines
- USFS
- BLM
- BIA
- FISH AND GAME
- STATE LAND COMM
- PRIVATE
- Wilderness



Date Saved: 9/22/2016 9:08:16 PM

Point	Lat DD	Long DD
DP-10	41° 16.597' N	120° 17.316' W
DP-15	41° 16.891' N	120° 16.953' W
DP-20	41° 18.591' N	120° 16.616' W
DP-30	41° 18.700' N	120° 15.589' W
West Valley Helispot	41° 13.210' N	120° 27.390' W
H-1	41° 16.038' N	120° 18.546' W
H-2	41° 16.938' N	120° 16.195' W
H-3	41° 17.870' N	120° 16.330' W
H-4	41° 14.890' N	120° 13.910' W
H-5	41° 16.020' N	120° 13.990' W
H-6	41° 15.366' N	120° 15.186' W
H-7	41° 18.281' N	120° 15.114' W
DP-10	41° 16.597' N	120° 17.316' W
DP-20	41° 18.591' N	120° 16.616' W
DP-30	41° 18.700' N	120° 15.589' W
Poison Sling	41° 16.537' N	120° 15.246' W
Zulu Sling	41° 17.151' N	120° 16.204' W
Whiskey 1 Sling	41° 16.474' N	120° 14.445' W
Mill Sling	41° 16.570' N	120° 14.955' W
Clear Dip	41° 16.523' N	120° 16.654' W
Mill Dip	41° 18.748' N	120° 14.760' W
C-1	41° 14.890' N	120° 13.910' W
ICP	41° 13.542' N	120° 28.244' W