

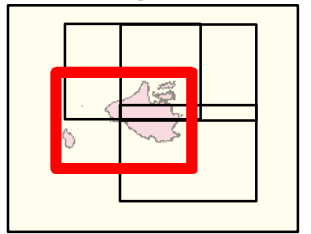
# Soup Complex CA-MDF-0905

IAP  
9/24/2016

Soup 1 - 133 ac  
Soup 2 - 2,514 ac

- Uncontrolled Fire Edge
- Completed Dozer Line
- Completed Line
- H - H Hand Line
- R - R Road as Completed Line
- Proposed Dozer Line
- Division
- Drop Point
- Fire Location
- Fire Origin
- Helispot
- Repeater
- Sling Site
- Spot Fire
- Staging Area
- Water Source
- Wilderness
- Trail
- Road
- Private Land

## Page 1

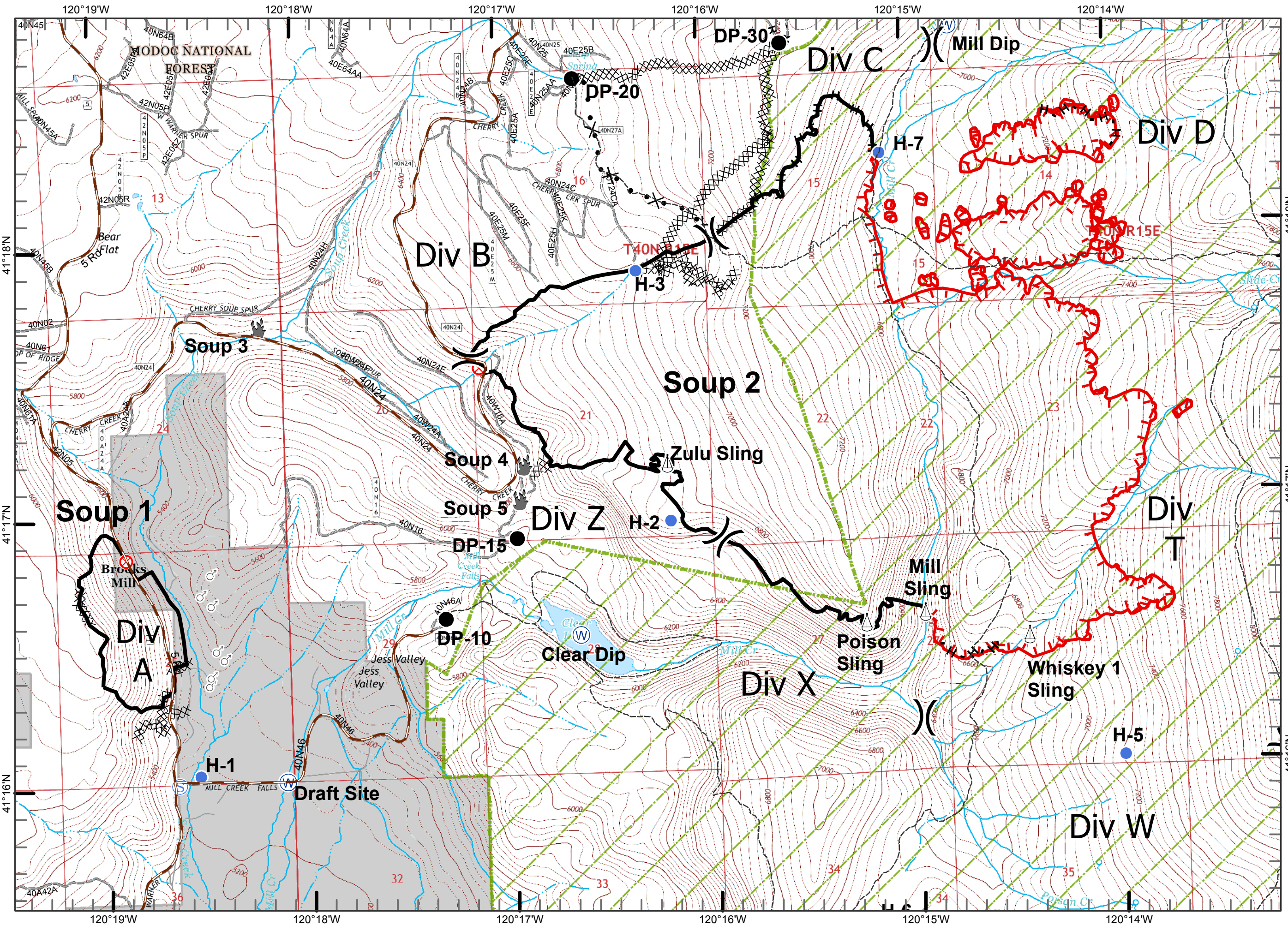


0 0.125 0.25 0.5 Miles

1:24,000



cy  
September 23, 2016  
2024 Hours



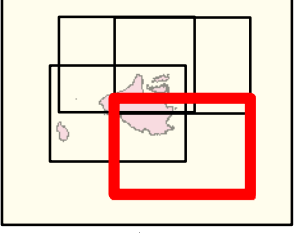
# Soup Complex CA-MDF-0905

IAP  
9/24/2016

Soup 1 - 133 ac  
Soup 2 - 2,514 ac

- Uncontrolled Fire Edge
- Completed Dozer Line
- Completed Line
- H - H Hand Line
- R - R Road as Completed Line
- Proposed Dozer Line
- Division
- Drop Point
- Fire Location
- Fire Origin
- Helispot
- Repeater
- Sling Site
- Spot Fire
- Staging Area
- Water Source
- Wilderness
- Trail
- Road
- Private Land

## Page 2

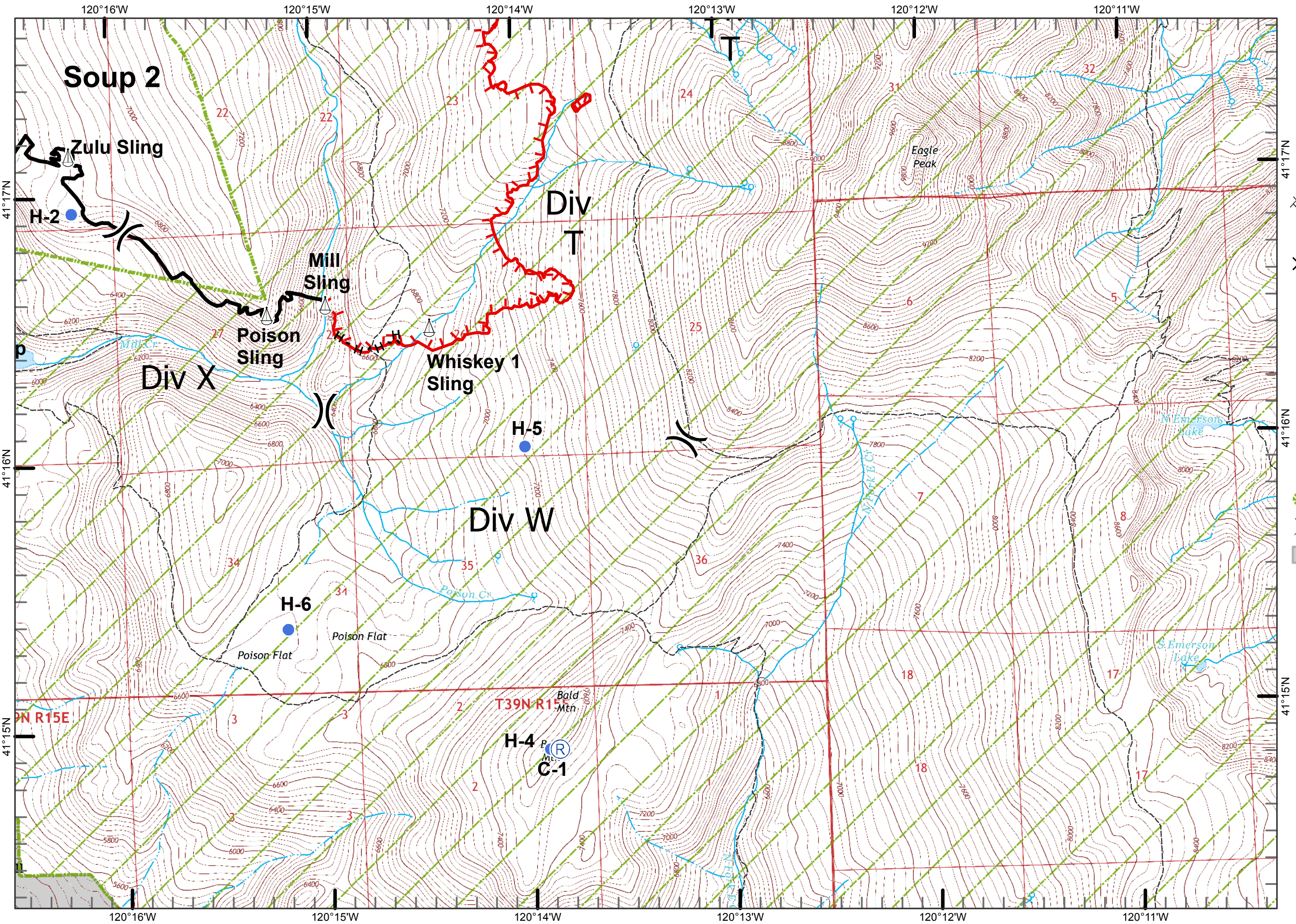


0 0.125 0.25 0.5 Miles

1:24,000



cy  
September 23, 2016  
2024 Hours



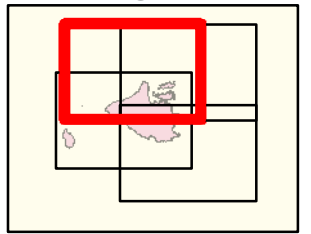
# Soup Complex CA-MDF-0905

IAP  
9/24/2016

Soup 1 - 133 ac  
Soup 2 - 2,514 ac

- Uncontrolled Fire Edge
- Completed Dozer Line
- Completed Line
- H - H Hand Line
- R - R Road as Completed Line
- Proposed Dozer Line
- Division
- Drop Point
- Fire Location
- Fire Origin
- Helispot
- Repeater
- Sling Site
- Spot Fire
- Staging Area
- Water Source
- Wilderness
- Trail
- Road
- Private Land

Page 3

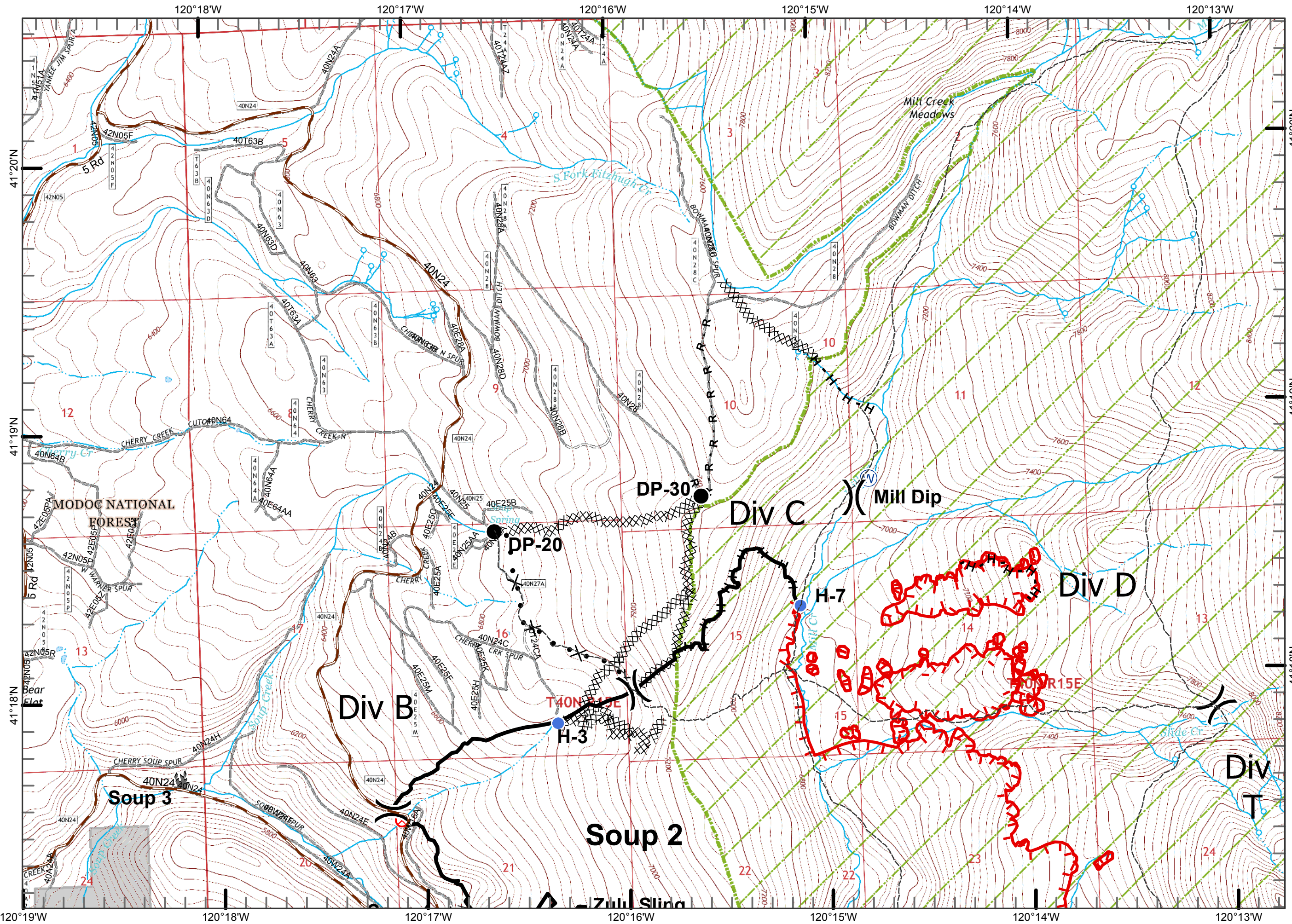


0 0.125 0.25 0.5 Miles

1:24,000



cy  
September 23, 2016  
2024 Hours



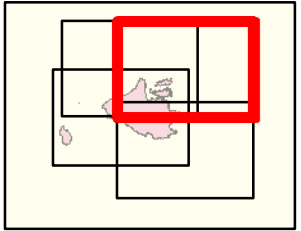
# Soup Complex CA-MDF-0905

IAP  
9/24/2016

Soup 1 - 133 ac  
Soup 2 - 2,514 ac

- Uncontrolled Fire Edge
- Completed Dozer Line
- Completed Line
- H - H Hand Line
- R - R Road as Completed Line
- Proposed Dozer Line
- Division
- Drop Point
- Fire Location
- Fire Origin
- Helispot
- Repeater
- Sling Site
- Spot Fire
- Staging Area
- Water Source
- Wilderness
- Trail
- Road
- Private Land

Page 4



0 0.125 0.25 0.5 Miles

1:24,000



cy  
September 23, 2016  
2024 Hours

