



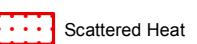


120°19'0"W 120°18'30"W 120°18'0"W 120°17'30"W 120°17'0"W 120°16'30"W 120°16'0"W 120°15'30"W 120°15'0"W 120°14'30"W 120°14'0"W 120°13'30"W 120°13'0"W


NATIONAL

INFRARED OPERATIONS


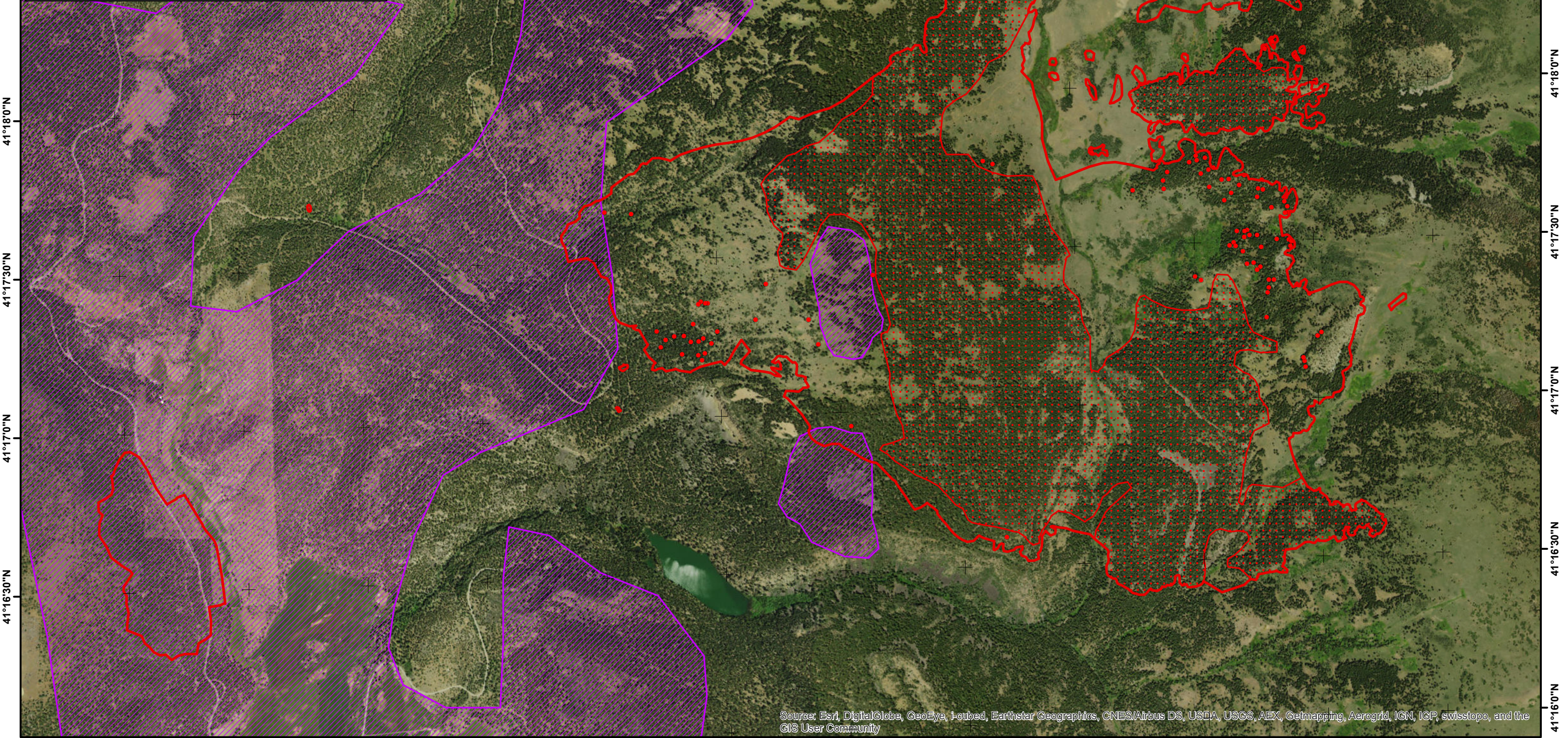
Infrared Map
Soup Complex
 CA-MDF-000905

IR Flight: Sept.24, 2016 0250 MDT
 Acres : 2,545
 Interpreter : Jim Grace

 Heat Perimeter
  Isolated Heat
 Imagery Obscured by Clouds
  Scattered Heat

Lat/Long
 GCS WGS84
 30 second spacing

 Miles

41°19'0"N 41°18'30"N 41°18'0"N 41°17'30"N 41°17'0"N 41°16'30"N 41°16'0"N

Source: Esri, DigitalGlobe, GeoEye, i-cubed, Earthstar Geographics, CNES/Airbus DS, USDA, USGS, AEX, Getmapping, Aerogrid, IGN, IGP, swisstopo, and the GIS User Community