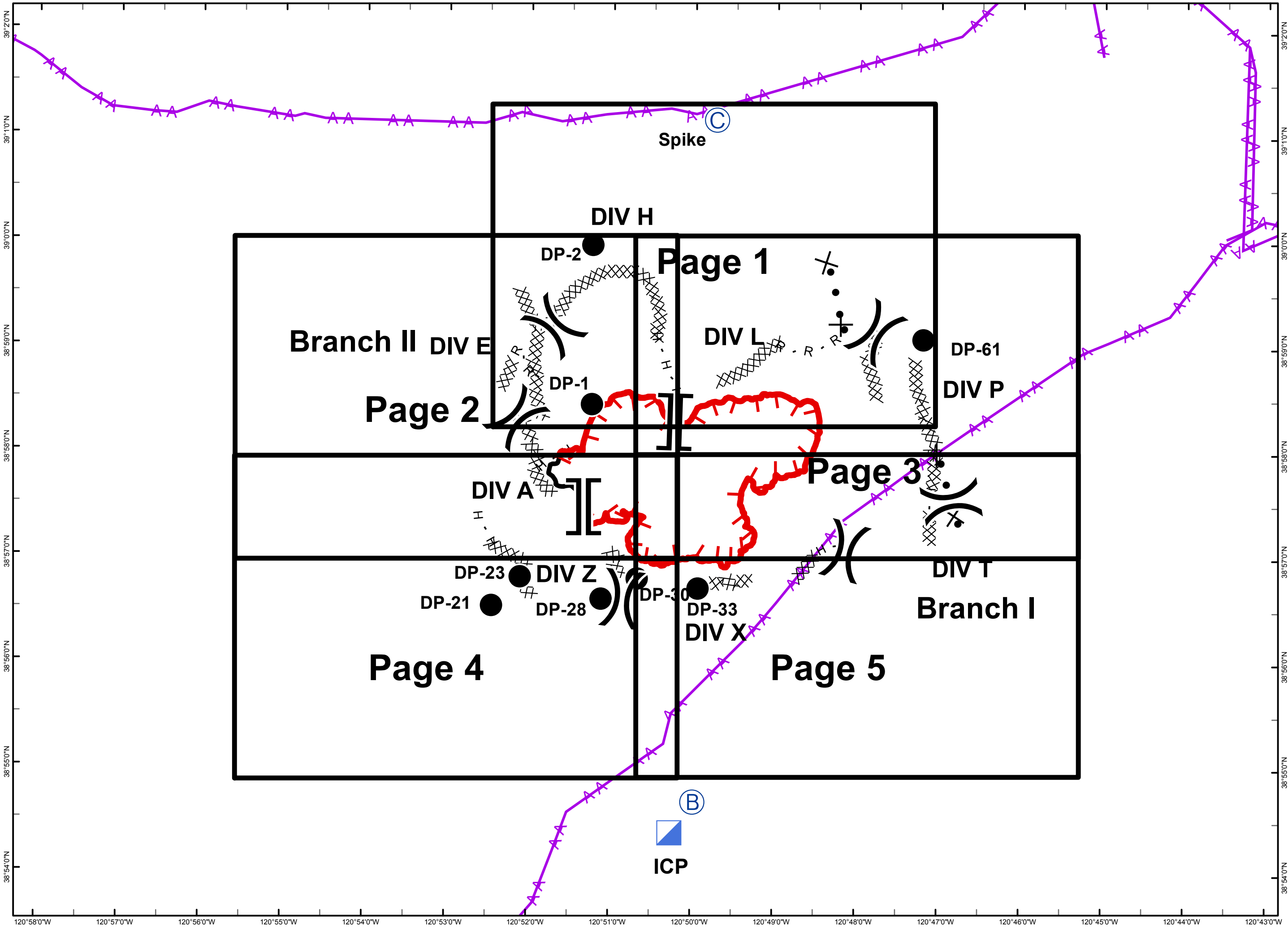
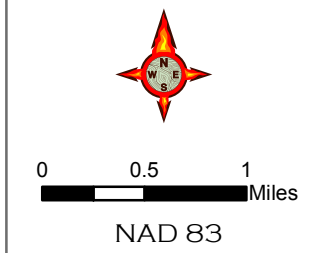


IAP MAP

TRAILHEAD INCIDENT
CA-NEU-015200
JULY 1, 2016
DAY SHIFT
2,151 ACRES
AS OF 22:42
06/30/16

- Division
- Branch
- Uncontrolled Fire Edge
- Completed Dozer Line
- Completed Line
- Hand Line
- Road as Completed Line
- Proposed Dozer Line
- Camp
- Drop Point
- Incident Base
- Incident Command Post
- Transmission Lines



120°58'0"W 120°57'0"W 120°56'0"W 120°55'0"W 120°54'0"W 120°53'0"W 120°52'0"W 120°51'0"W 120°50'0"W 120°49'0"W 120°48'0"W 120°47'0"W 120°46'0"W 120°45'0"W 120°44'0"W 120°43'0"W

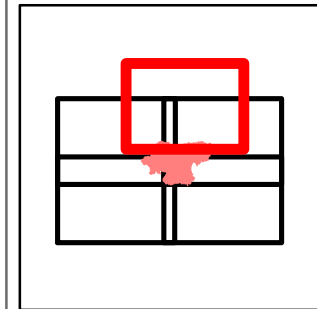
IAP MAP

TRAILHEAD INCIDENT
CA-NEU-015200
JULY 1, 2016
DAY SHIFT

2,151 ACRES
AS OF 22:42
06/30/16

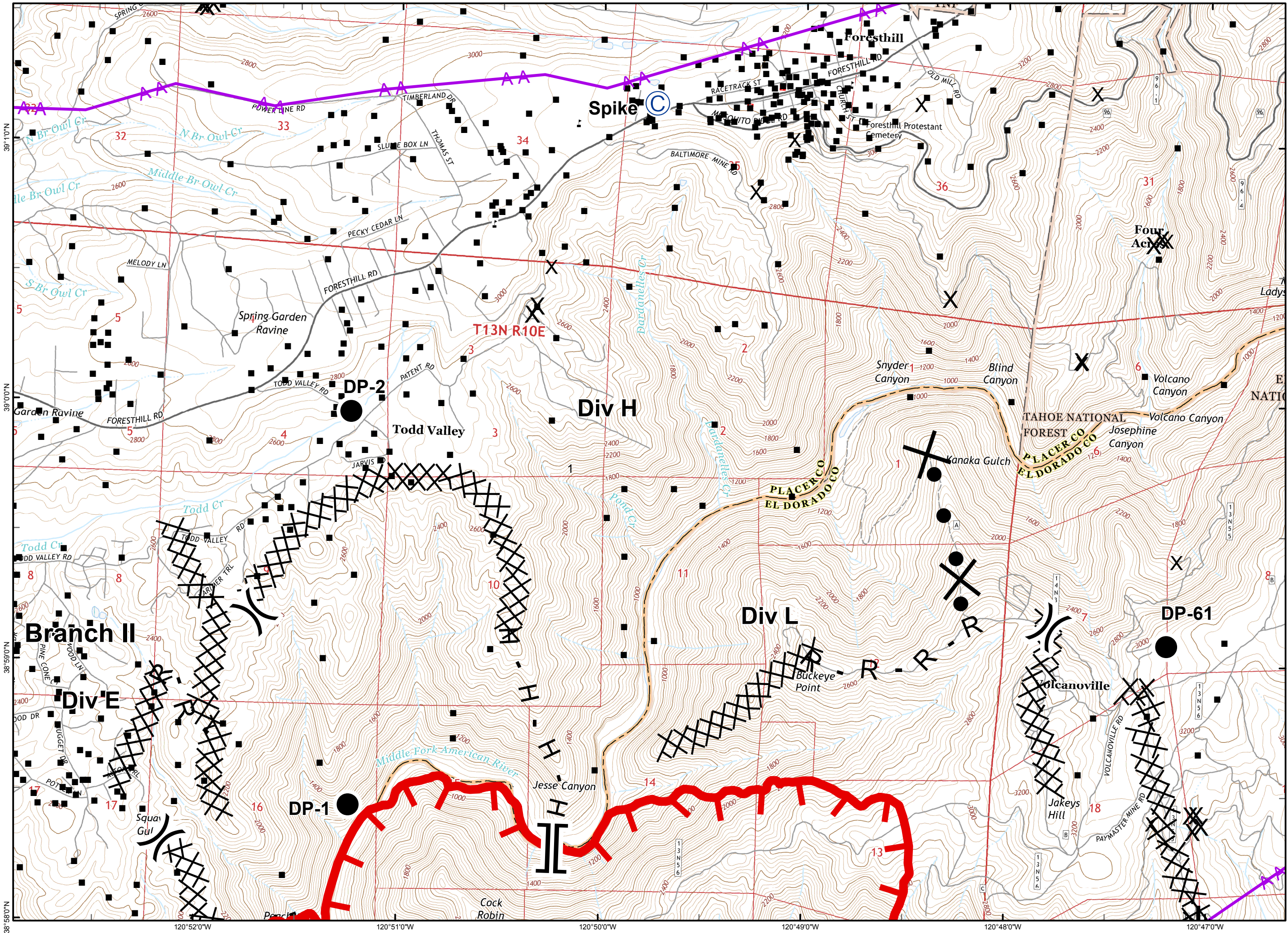
Page 1

- () Division
- [] Branch
- ⊙ Camp
- Drop Point
- Uncontrolled Fire Edge
- XXXX Completed Dozer Line
- H - Hand Line
- R - Road as Completed Line
- X Proposed Dozer Line
- Transmission Lines
- Building Cluster
- x Mines



0 0.25 0.5 Miles

NAD 83



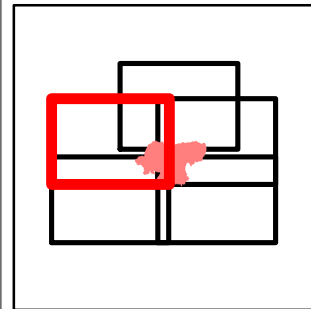
IAP MAP

TRAILHEAD INCIDENT
CA-NEU-015200
JULY 1, 2016
DAY SHIFT

2,151 ACRES
AS OF 22:42
06/30/16

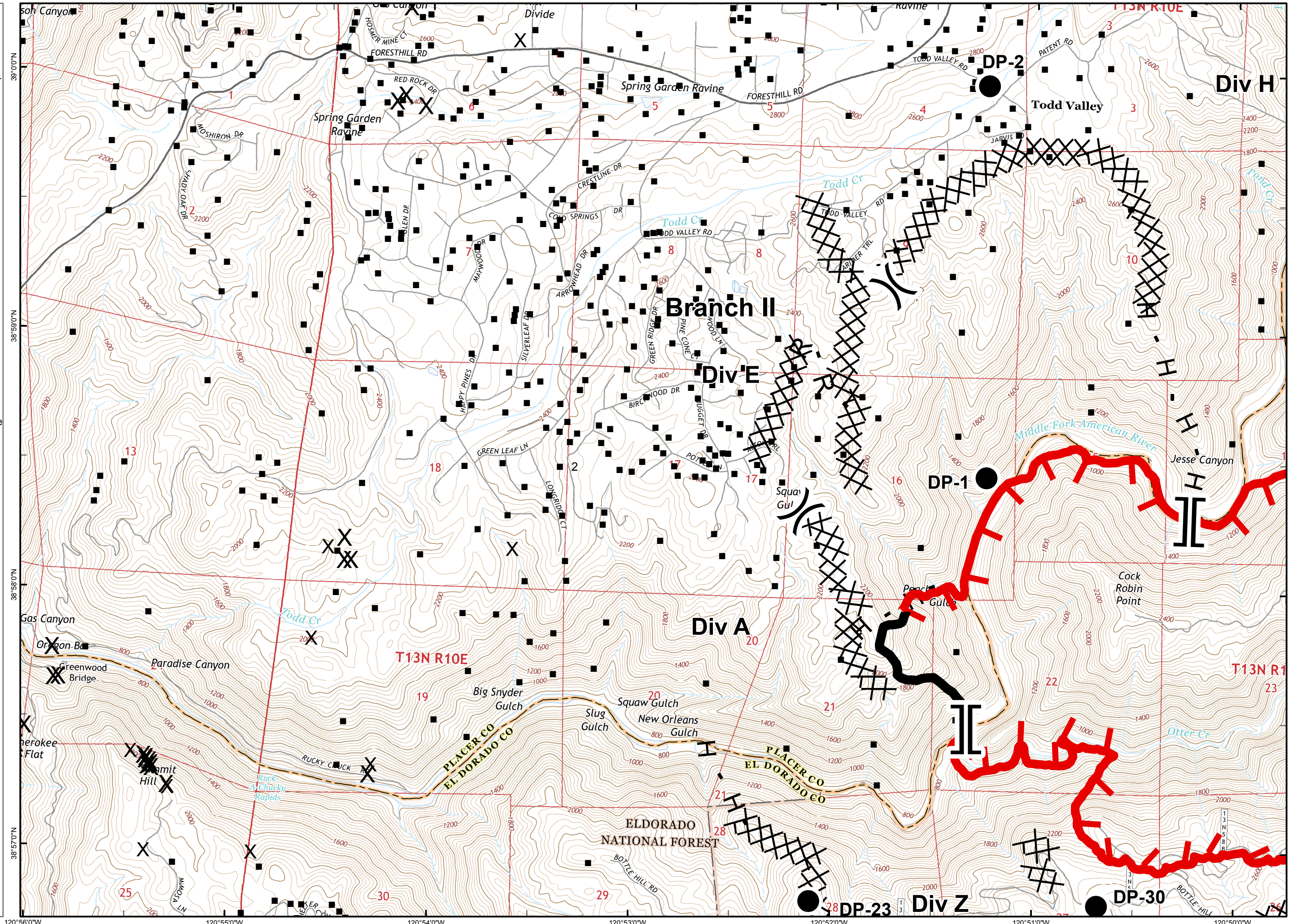
Page 2

- () Division
- [] Branch
- Drop Point
- Uncontrolled Fire Edge
- XXXX Completed Dozer Line
- Completed Line
- H - Hand Line
- R - Road as Completed Line
- Building Cluster
- x Mines



0 0.25 0.5
Miles

NAD 83










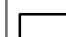
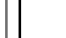


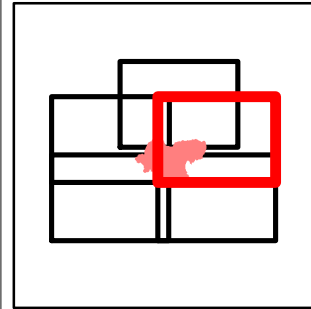
IAP MAP

TRAILHEAD INCIDENT
CA-NEU-015200
JULY 1, 2016
DAY SHIFT

2,151 ACRES
AS OF 22:42
06/30/16

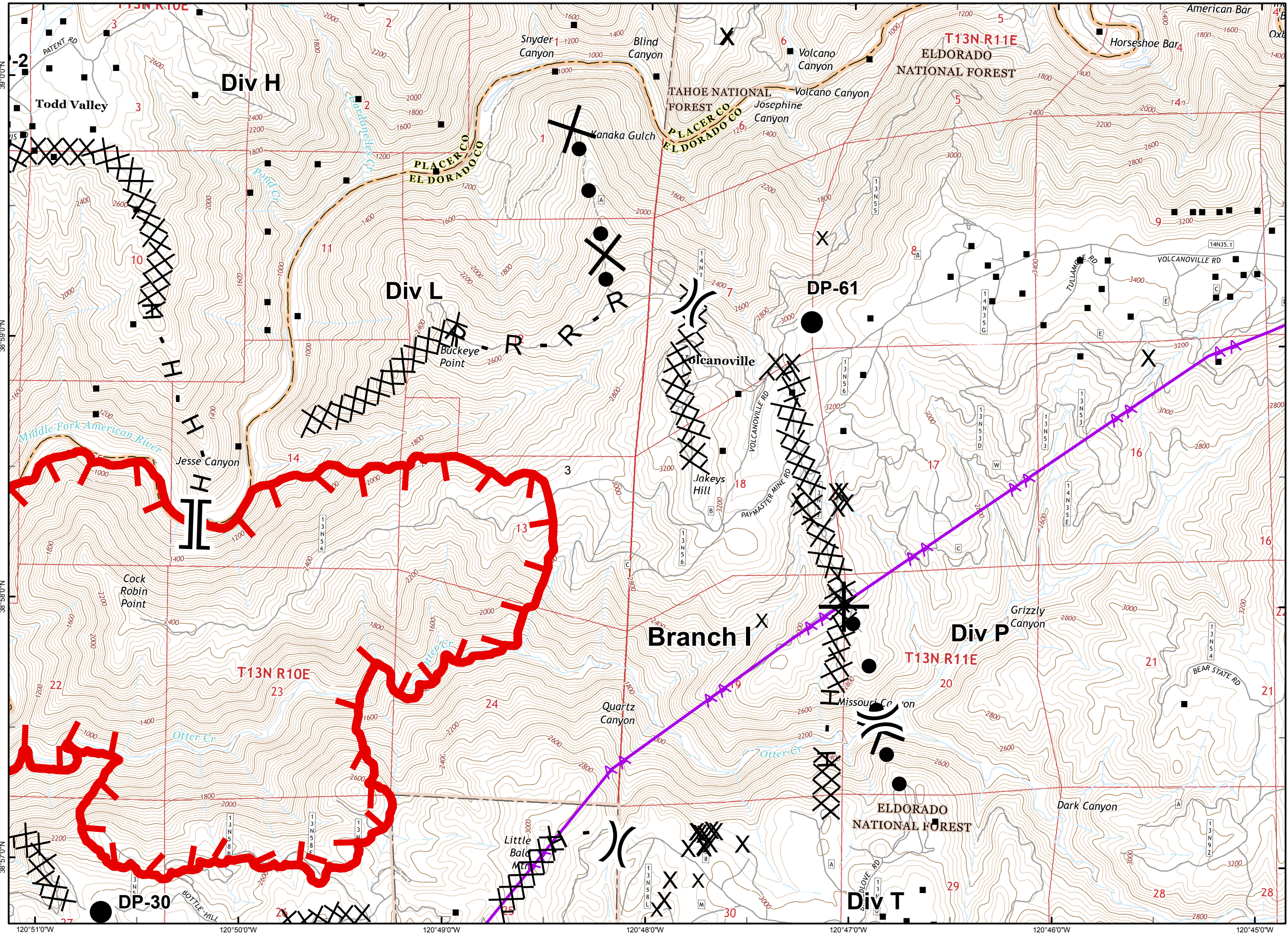
Page 3

-  Division
-  Branch
-  Drop Point
-  Uncontrolled Fire Edge
-  Completed Dozer Line
-  Hand Line
-  Road as Completed Line
-  Proposed Dozer Line
-  Transmission Lines
-  Building Cluster
-  Mines



0 0.25 0.5
Miles

NAD 83



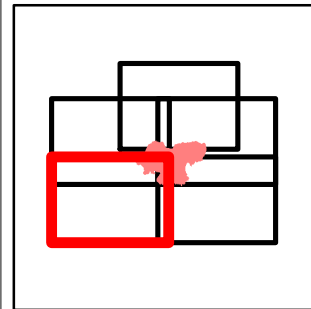
IAP MAP

TRAILHEAD INCIDENT
CA-NEU-015200
JULY 1, 2016
DAY SHIFT

2,151 ACRES
AS OF 22:42
06/30/16

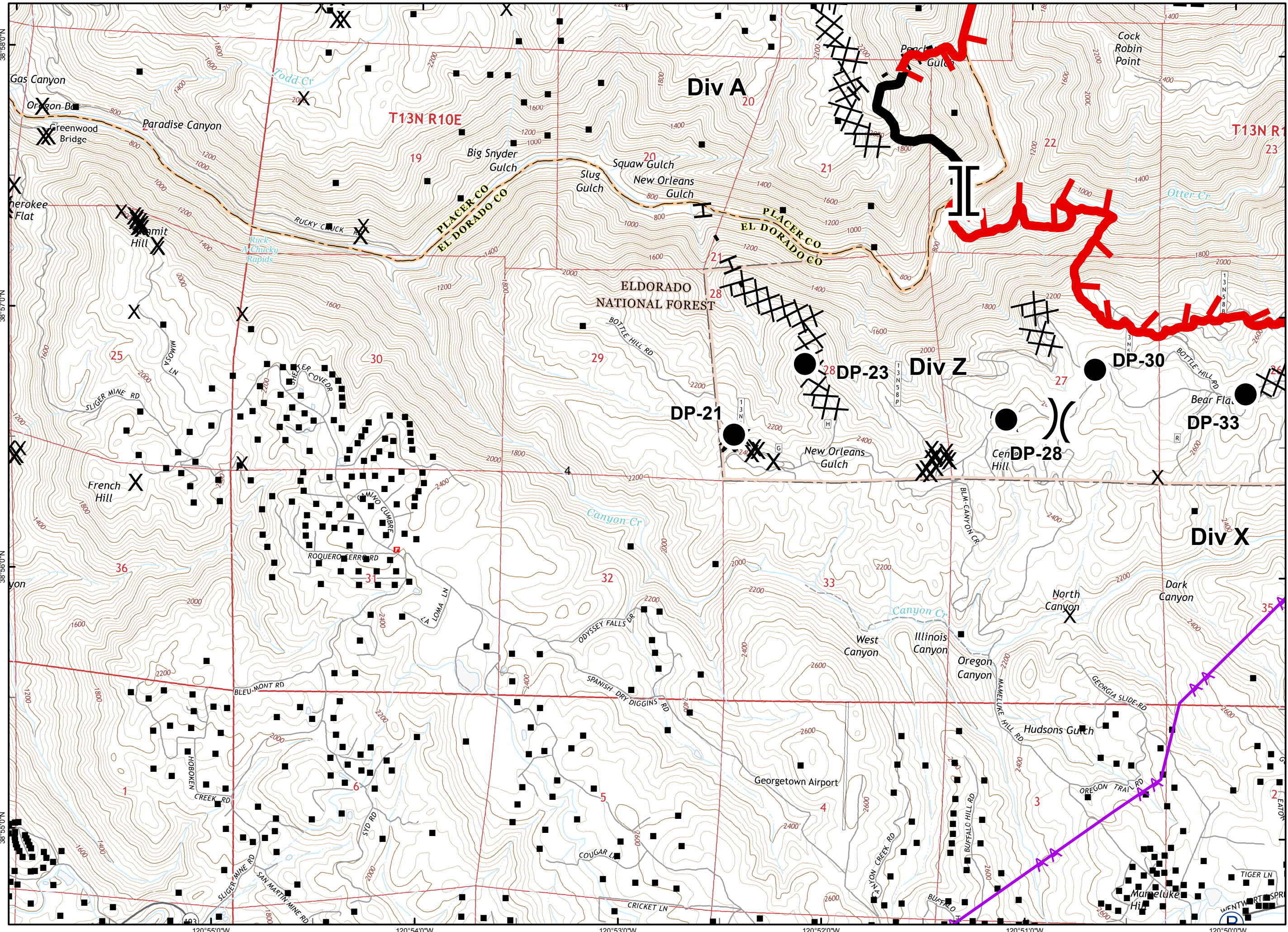
Page 4

- () Division
- [] Branch
- Drop Point
- Ⓟ Incident Base
- ▬ Uncontrolled Fire Edge
- XXXX Completed Dozer Line
- ▬ Completed Line
- H Hand Line
- ⚡ Transmission Lines
- Building Cluster
- x Mines



0 0.25 0.5 Miles

NAD 83



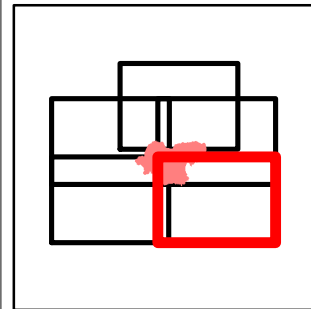
IAP MAP

TRAILHEAD INCIDENT
CA-NEU-015200
JULY 1, 2016
DAY SHIFT

2,151 ACRES
AS OF 22:42
06/30/16

Page 5

- () Division
- [] Branch
- Drop Point
- Ⓟ Incident Base
- ▬ Uncontrolled Fire Edge
- XXXX Completed Dozer Line
- H - Hand Line
- ✕ Proposed Dozer Line
- ★ Transmission Lines
- Building Cluster
- x Mines



0 0.25 0.5 Miles

NAD 83

