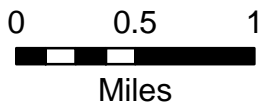


# IAP MAP

TRAILHEAD INCIDENT  
CA-NEU-015200  
JULY 3, 2016  
NIGHT SHIFT

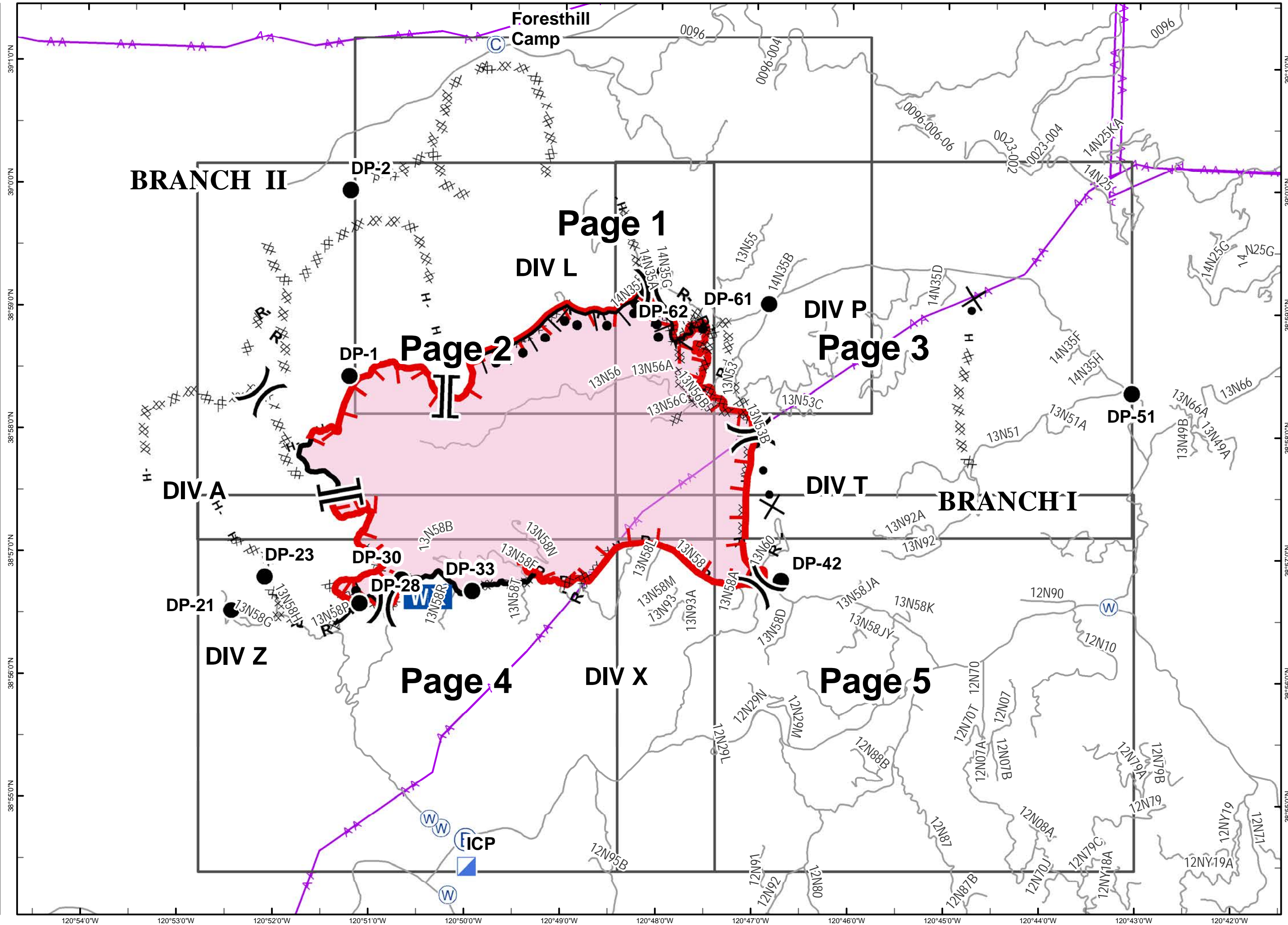
5,046 ACRES  
AS OF  
07/3/16 10:00

- Division
- Branch
- Camp
- Drop Point
- Incident Base
- Incident Command Post
- Mobile Weather Unit
- Water Source
- Uncontrolled Fire Edge
- Completed Dozer Line
- Completed Line
- Hand Line
- Road as Completed Line
- Completed Burnout
- Proposed Dozer Line
- Transmission Lines



Miles

NAD 83



# IAP MAP

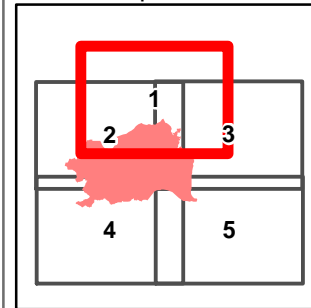
TRAILHEAD INCIDENT  
CA-NEU-015200  
JULY 3, 2016  
NIGHT SHIFT

5,046 ACRES  
AS OF 07/3/16 10:00

Page 1

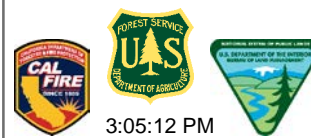
- Division
- Branch
- Camp
- Drop Point
- Uncontrolled Fire Edge
- Completed Dozer Line
- Hand Line
- Road as Completed Line
- Proposed Dozer Line
- Transmission Lines
- Building Cluster
- Mine

Map Index

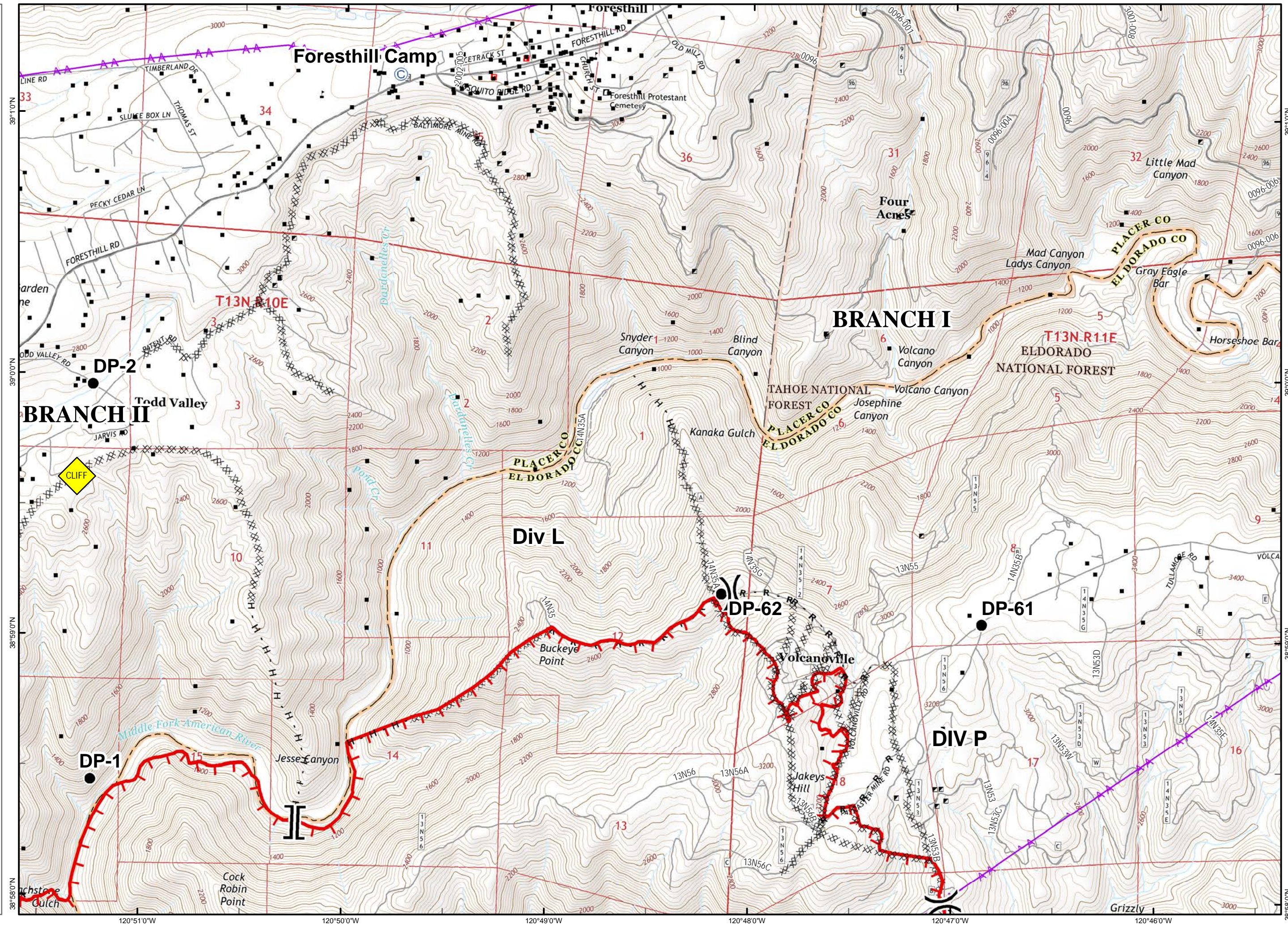


0 0.25 0.5  
Miles

NAD 83



3:05:12 PM


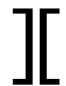












# IAP MAP

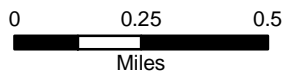
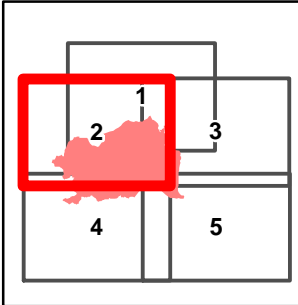
TRAILHEAD INCIDENT  
CA-NEU-015200  
JULY 3, 2016  
NIGHT SHIFT

5,046 ACRES  
AS OF 07/3/16 10:00

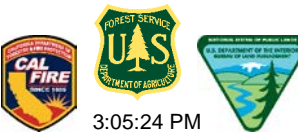
Page 2

-  Division
-  Branch
-  Drop Point
-  Uncontrolled Fire Edge
-  Completed Dozer Line
-  Completed Line
-  Hand Line
-  Road as Completed Line
-  Proposed Dozer Line
-  Transmission Lines
-  Building Cluster
-  Mine

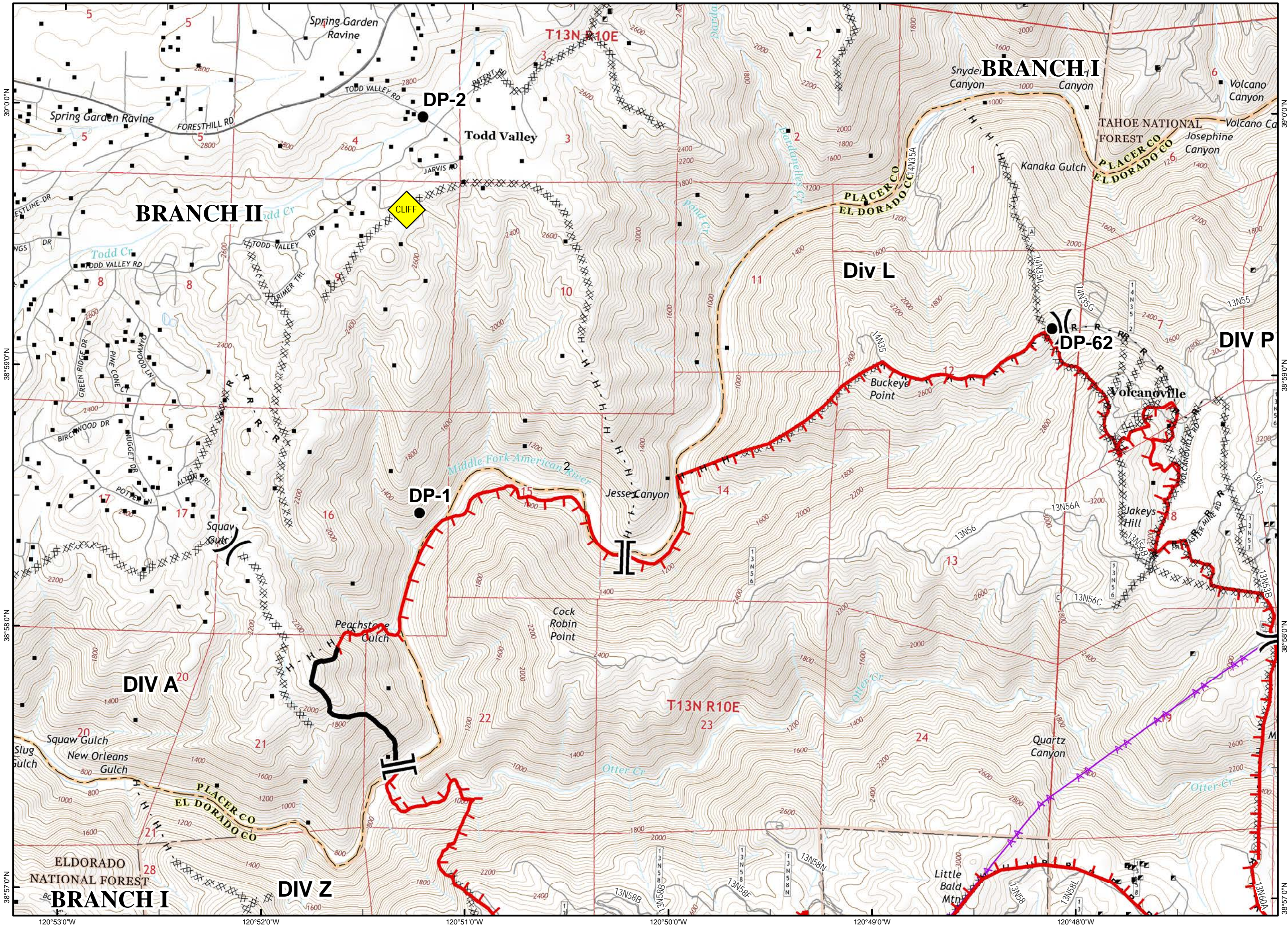
Map Index



NAD 83



3:05:24 PM



120°53'0"W 120°52'0"W 120°51'0"W 120°50'0"W 120°49'0"W 120°48'0"W

39°0'0"N 38°59'0"N 38°58'0"N 38°57'0"N

39°0'0"E 13N55 13N56 13N57 13N58 13N59 13N58A 13N58B 13N58C 13N58D 13N58E 13N58F 13N58G 13N58H 13N58I 13N58J 13N58K 13N58L 13N58M 13N58N 13N58O 13N58P 13N58Q 13N58R 13N58S 13N58T 13N58U 13N58V 13N58W 13N58X 13N58Y 13N58Z

# IAP MAP

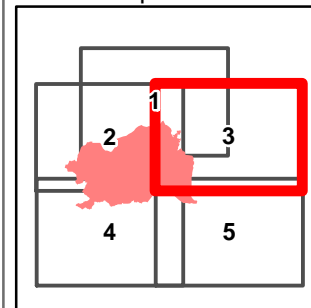
TRAILHEAD INCIDENT  
CA-NEU-015200  
JULY 3, 2016  
NIGHT SHIFT

5,046 ACRES  
AS OF 07/3/16 10:00

Page 3

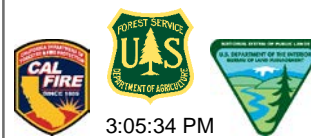
- ( ) Division
- Drop Point
- Uncontrolled Fire Edge
- XX XX Completed Dozer Line
- H - Hand Line
- R - Road as Completed Line
- X • Proposed Dozer Line
- Transmission Lines
- Building Cluster
- Mine

Map Index

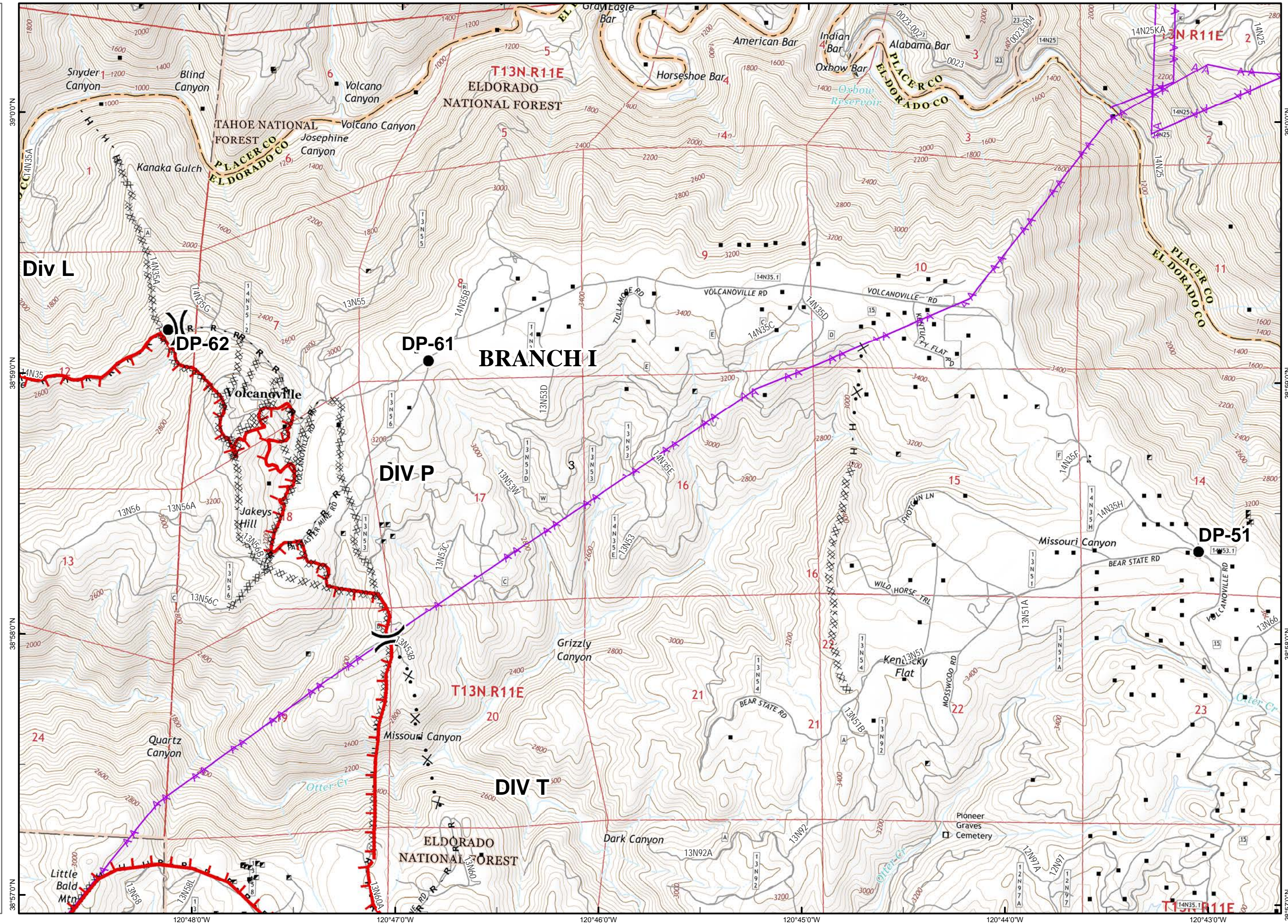


0 0.25 0.5  
Miles

NAD 83



3:05:34 PM



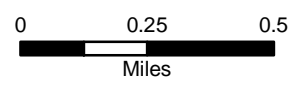
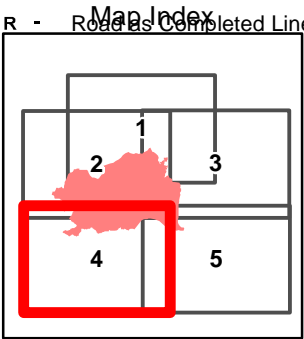
# IAP MAP

TRAILHEAD INCIDENT  
CA-NEU-015200  
JULY 3, 2016  
NIGHT SHIFT

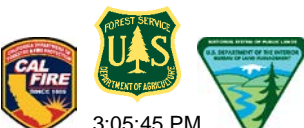
5,046 ACRES  
AS OF 07/3/16 10:00

Page 4

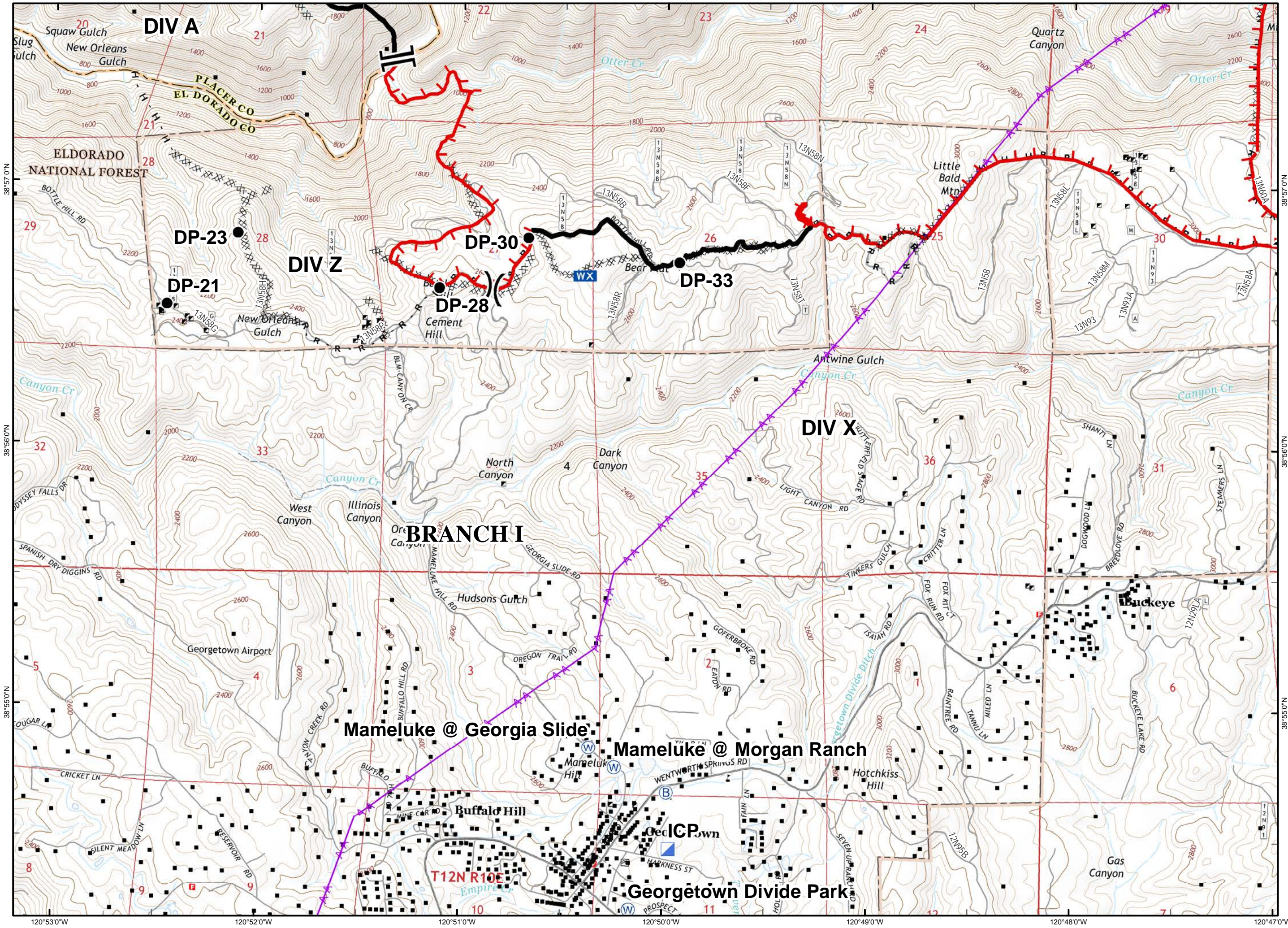
- Division
- Branch
- Drop Point
- Incident Base
- Incident Command Post
- Mobile Weather Unit
- Water Source
- Uncontrolled Fire Edge
- Completed Dozer Line
- Completed Line
- Hand Line
- Road as Completed Line



NAD 83



3:05:45 PM



120°53'0"W 120°52'0"W 120°51'0"W 120°50'0"W 120°49'0"W 120°48'0"W 120°47'0"W

# IAP MAP

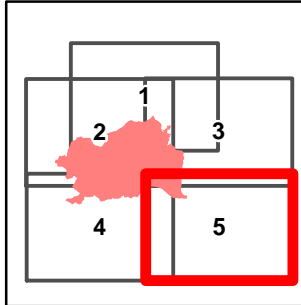
TRAILHEAD INCIDENT  
CA-NEU-015200  
JULY 3, 2016  
NIGHT SHIFT

5,046 ACRES  
AS OF 07/3/16 10:00

Page 5

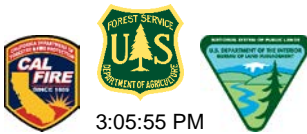
- Division
- Drop Point
- Water Source
- Uncontrolled Fire Edge
- Completed Dozer Line
- Hand Line
- Road as Completed Line
- Proposed Dozer Line
- Transmission Lines
- Building Cluster
- Mine

Map Index



0 0.25 0.5  
Miles

NAD 83



3:05:55 PM

