

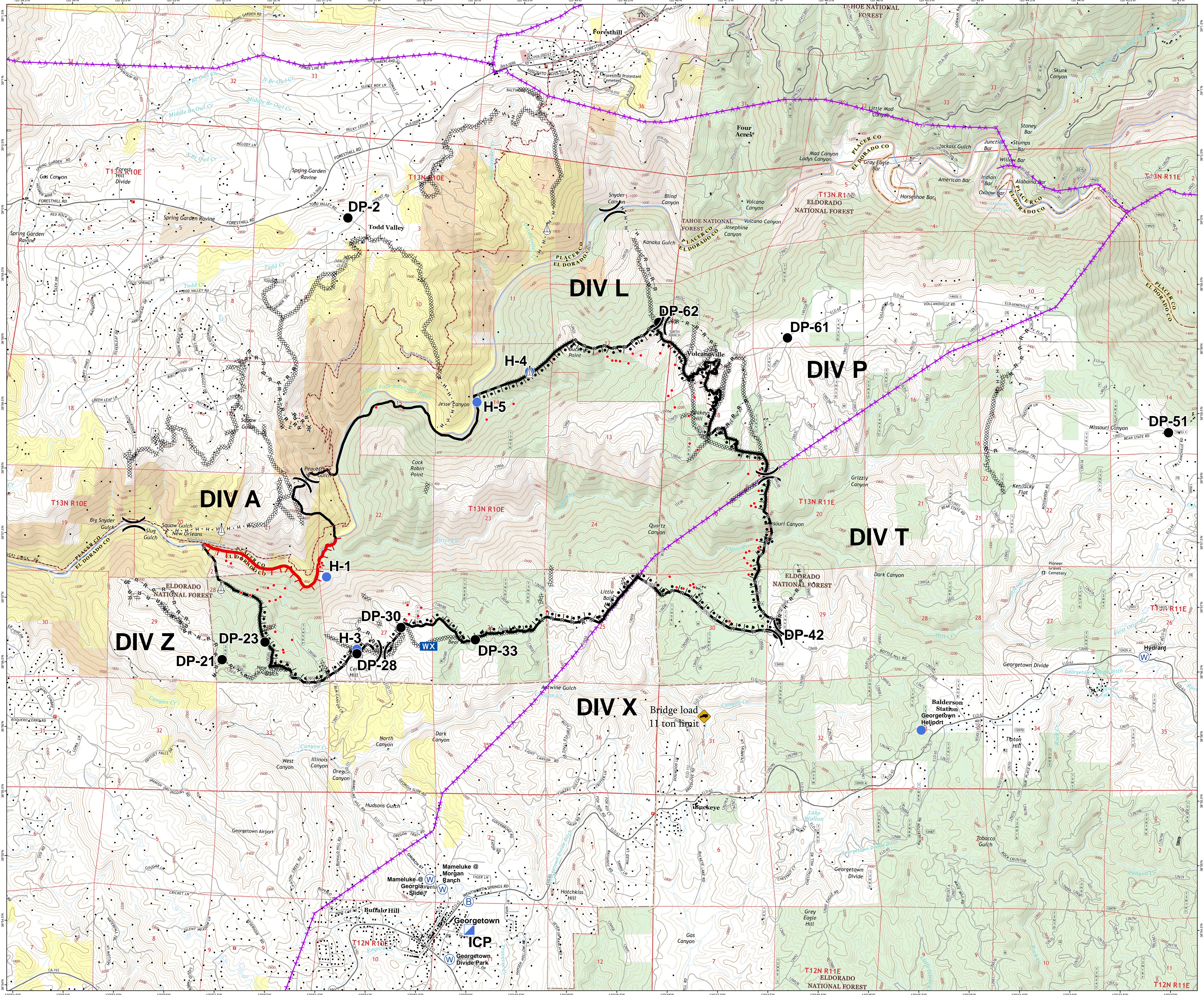
TRAILHEAD FIRE CA-NEU-015200

JULY 7, 2016
NIGHT SHIFT

APPROXIMATE ACRES:
5,646
IR Flight 77 @ 0045 hrs

OPERATIONS MAP

- () Division
- Drop Point
- Helispot
- (B) Incident Base
- ▣ Incident Command Post
- IR Isolated Heat Source
- WX Mobile Weather Unit
- ⚓ Sling Site
- (W) Water Source
- ▬ Uncontrolled Fire Edge
- ▬ Completed Dozer Line
- ▬ Completed Line
- H · H · Hand Line
- R · R · Road as Completed Line
- ▬ Completed Burnout
- × · · · Proposed Dozer Line
- ⚡ Transmission Lines
- Mines
- Structure
- Local Government
- USDA Forest Service
- Bureau of Reclamation
- Bureau of Land Management
- Other Federal Lands



0 0.5 1
Miles



Map Datum: NAD 83 UTM Zone 10
17/07/2016 1:25:14 AM
ops_planning_arch_a_land_2016M07D_PPMM_Trailhead_NEU015200_MWD009n.mxd