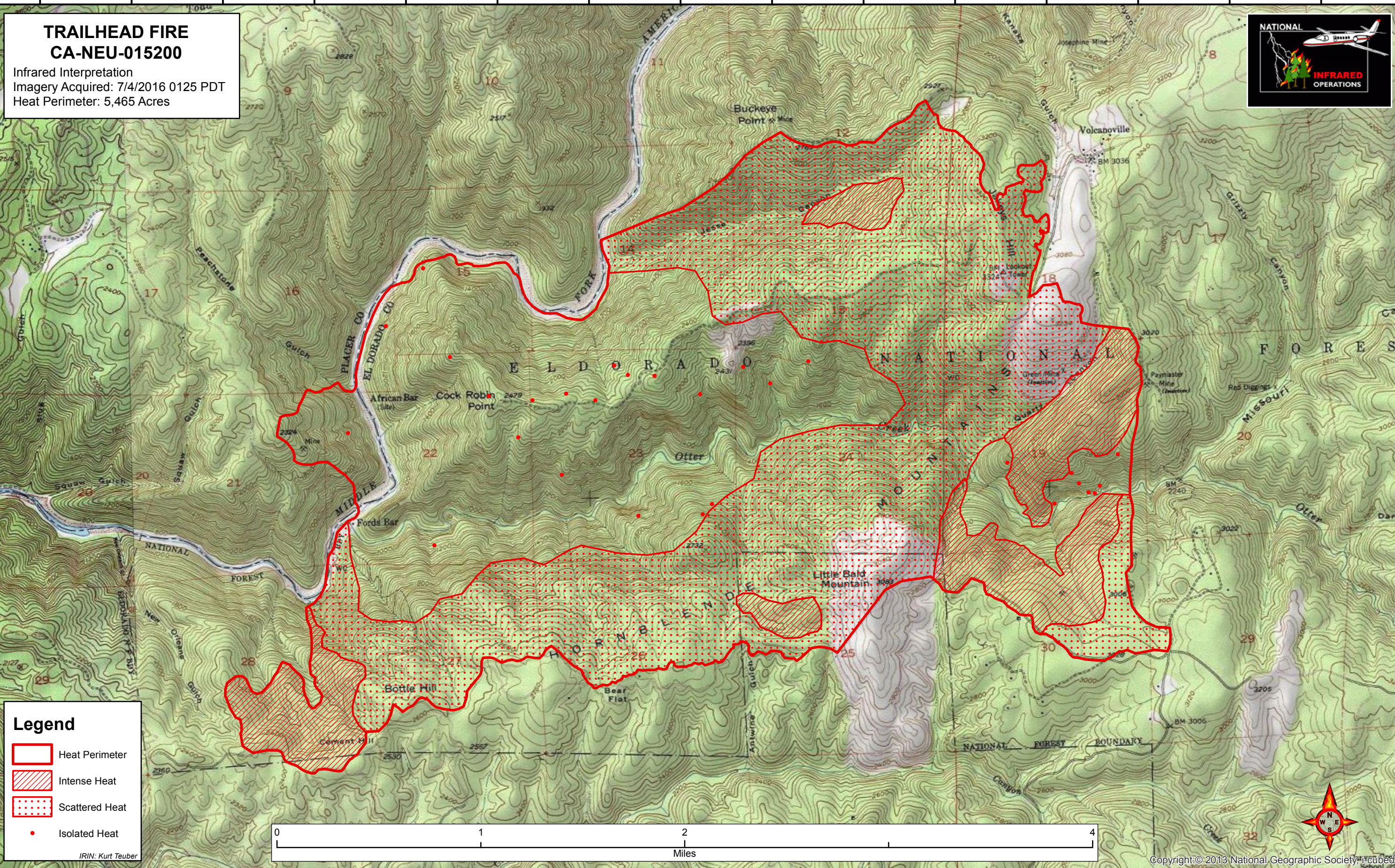






120°53'0"W 120°52'30"W 120°52'0"W 120°51'30"W 120°51'0"W 120°50'30"W 120°50'0"W 120°49'30"W 120°49'0"W 120°48'30"W 120°48'0"W 120°47'30"W 120°47'0"W 120°46'30"W 120°46'0"W



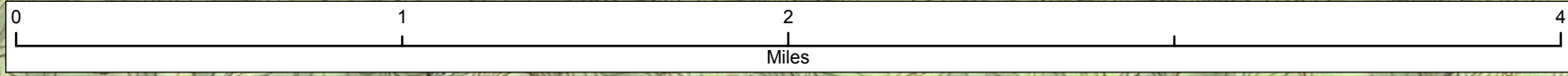
**TRAILHEAD FIRE**  
**CA-NEU-015200**  
Infrared Interpretation  
Imagery Acquired: 7/4/2016 0125 PDT  
Heat Perimeter: 5,465 Acres



**Legend**

-  Heat Perimeter
-  Intense Heat
-  Scattered Heat
-  Isolated Heat

IRIN: Kurt Teuber



Copyright © 2013 National Geographic Society, Inc.

120°53'0"W 120°52'30"W 120°52'0"W 120°51'30"W 120°51'0"W 120°50'30"W 120°50'0"W 120°49'30"W 120°49'0"W 120°48'30"W 120°48'0"W 120°47'30"W 120°47'0"W 120°46'30"W 120°46'0"W

38°59'30"N  
38°59'0"N  
38°58'30"N  
38°58'0"N  
38°57'30"N  
38°57'0"N  
38°56'30"N  
38°56'0"N

38°59'30"N  
38°59'0"N  
38°58'30"N  
38°58'0"N  
38°57'30"N  
38°57'0"N  
38°56'30"N  
38°56'0"N