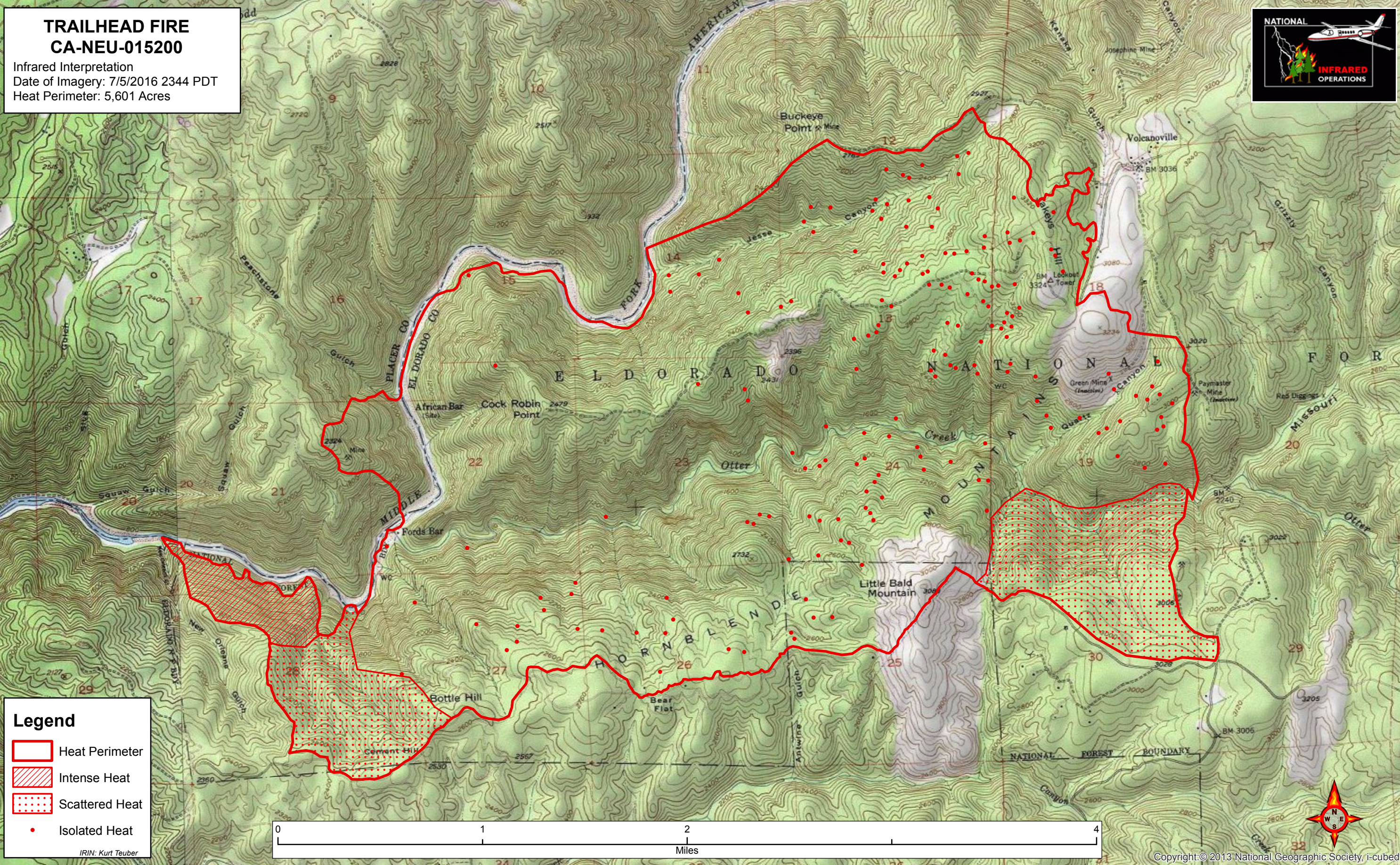


120°53'0"W 120°52'30"W 120°52'0"W 120°51'30"W 120°51'0"W 120°50'30"W 120°50'0"W 120°49'30"W 120°49'0"W 120°48'30"W 120°48'0"W 120°47'30"W 120°47'0"W 120°46'30"W 120°46'0"W



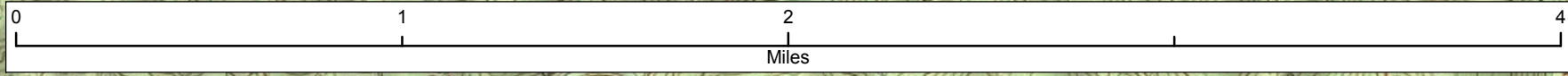
**TRAILHEAD FIRE**  
**CA-NEU-015200**  
Infrared Interpretation  
Date of Imagery: 7/5/2016 2344 PDT  
Heat Perimeter: 5,601 Acres



**Legend**

- Heat Perimeter
- Intense Heat
- Scattered Heat
- Isolated Heat

IRIN: Kurt Teuber



Copyright © 2013 National Geographic Society, i-cubed

120°53'30"W 120°53'0"W 120°52'30"W 120°52'0"W 120°51'30"W 120°51'0"W 120°50'30"W 120°50'0"W 120°49'30"W 120°49'0"W 120°48'30"W 120°48'0"W 120°47'30"W 120°47'0"W 120°46'30"W 120°46'0"W