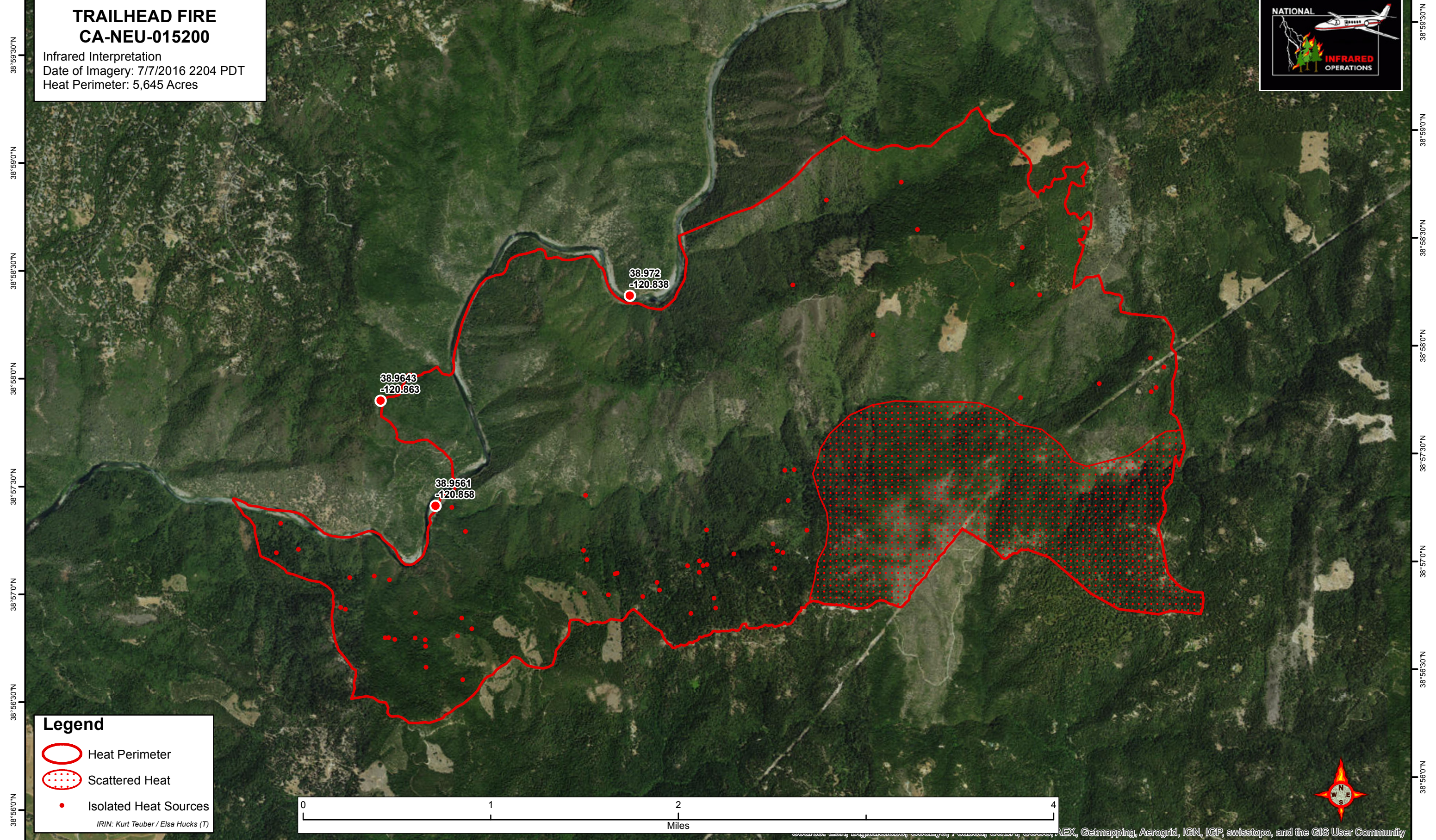
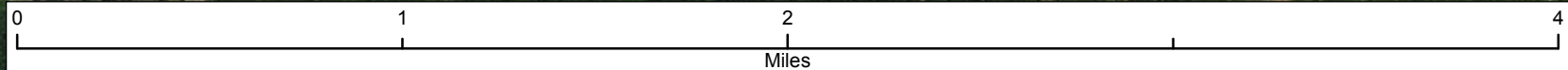


120°53'30"W 120°53'0"W 120°52'30"W 120°52'0"W 120°51'30"W 120°51'0"W 120°50'30"W 120°50'0"W 120°49'30"W 120°49'0"W 120°48'30"W 120°48'0"W 120°47'30"W 120°47'0"W 120°46'30"W 120°46'0"W

TRAILHEAD FIRE
CA-NEU-015200
Infrared Interpretation
Date of Imagery: 7/7/2016 2204 PDT
Heat Perimeter: 5,645 Acres



Legend
○ Heat Perimeter
● Scattered Heat
● Isolated Heat Sources
IRIN: Kurt Teuber / Elsa Hucks (T)



Source: Esri, DigitalGlobe, GeoEye, AeroGRID, IGN, IGP, swisstopo, and the GIS User Community

120°53'30"W 120°53'0"W 120°52'30"W 120°52'0"W 120°51'30"W 120°51'0"W 120°50'30"W 120°50'0"W 120°49'30"W 120°49'0"W 120°48'30"W 120°48'0"W 120°47'30"W 120°47'0"W 120°46'30"W 120°46'0"W

38°59'30"N
38°59'0"N
38°58'30"N
38°58'0"N
38°57'30"N
38°57'0"N
38°56'30"N
38°56'0"N

38°59'30"N
38°59'0"N
38°58'30"N
38°58'0"N
38°57'30"N
38°57'0"N
38°56'30"N
38°56'0"N