

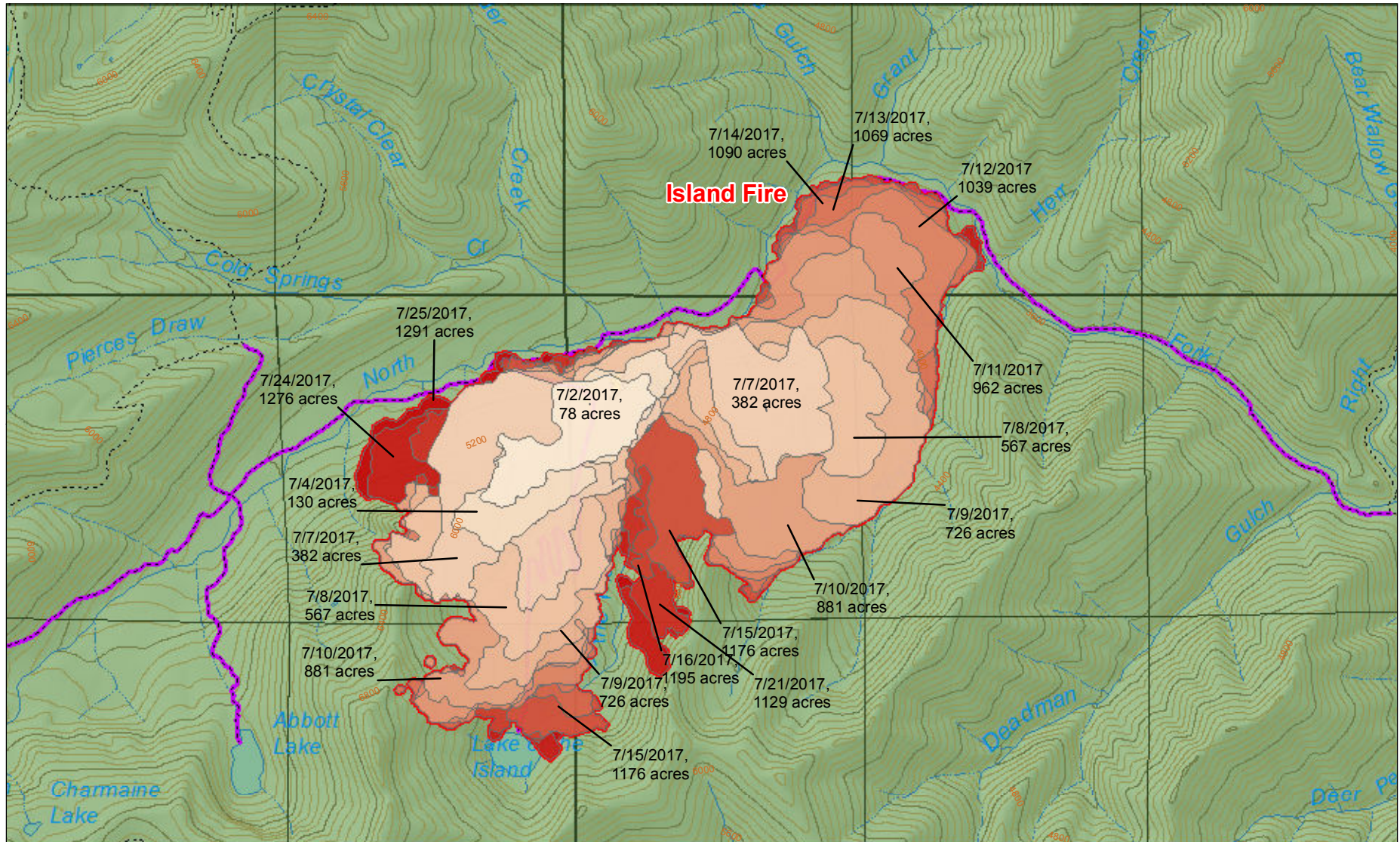


# Island Fire Incident Map

CA-KNF-004540

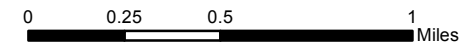
Salmon River Ranger District

Klamath National Forest



## Legend

07/25/2017, 1291 acres	7/2/2017	7/9/2017	7/12/2017	7/16/2017	Trail Closure
7/4/2017	7/7/2017	7/10/2017	7/13/2017	7/21/2017	Wilderness Area
7/7/2017	7/11/2017	7/14/2017	7/15/2017	7/24/2017	National Forest Land
				7/25/2017	



1 in = 0.5 mi  
 July 26, 2017, AM