

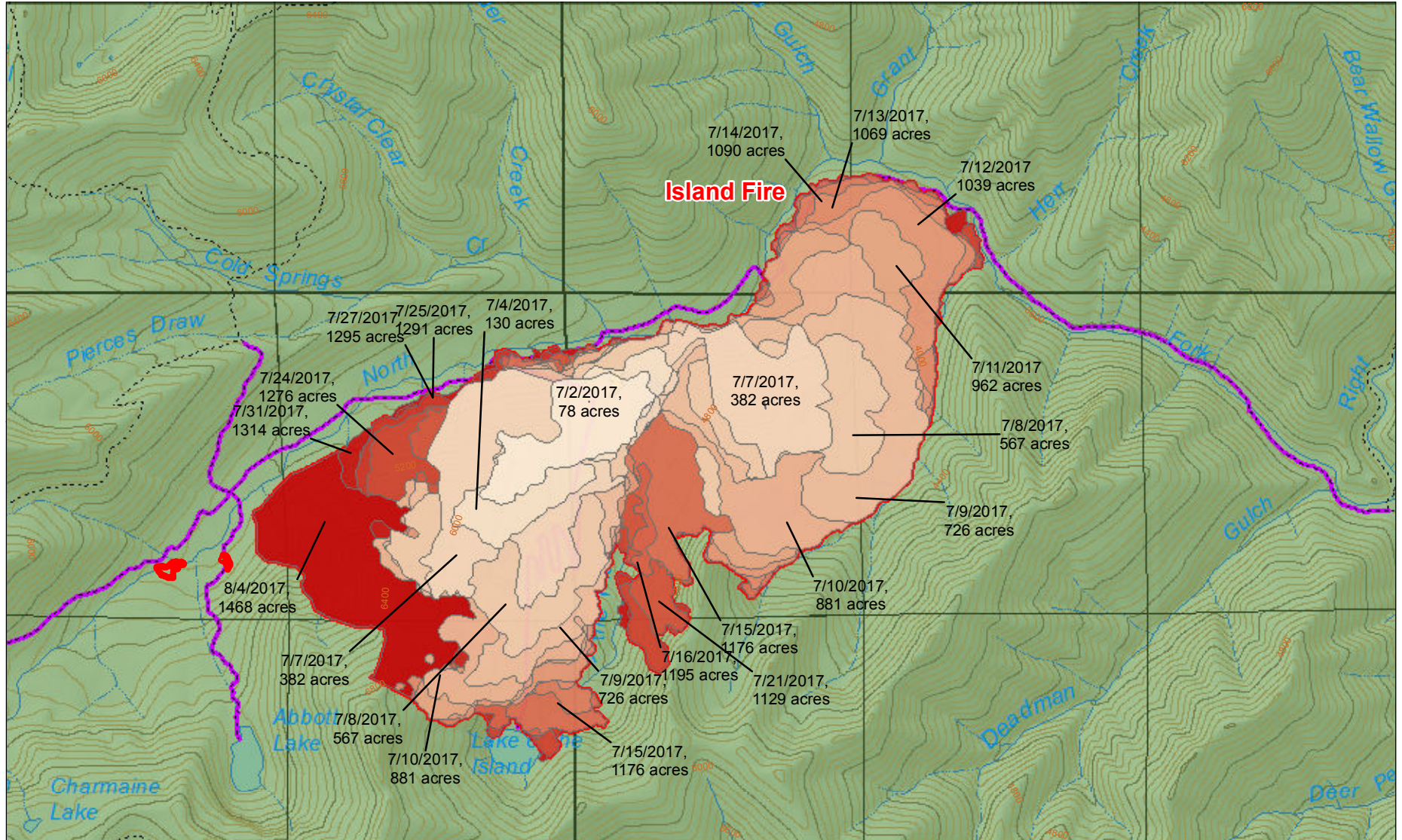


# Island Fire Incident Map

CA-KNF-004540

Salmon River Ranger District

Klamath National Forest



## Legend

<b>Current Fire Perimeter</b>	<b>Fire Progression</b>	7/8/2017	7/12/2017	7/16/2017	7/27/2017	Trail Closure
	8/4/2017, 1468 acres	7/2/2017	7/9/2017	7/13/2017	7/21/2017	7/31/2017
		7/4/2017	7/10/2017	7/14/2017	7/24/2017	8/4/2017
		7/7/2017	7/11/2017	7/15/2017	7/25/2017	
						Wilderness Area
						National Forest Land

