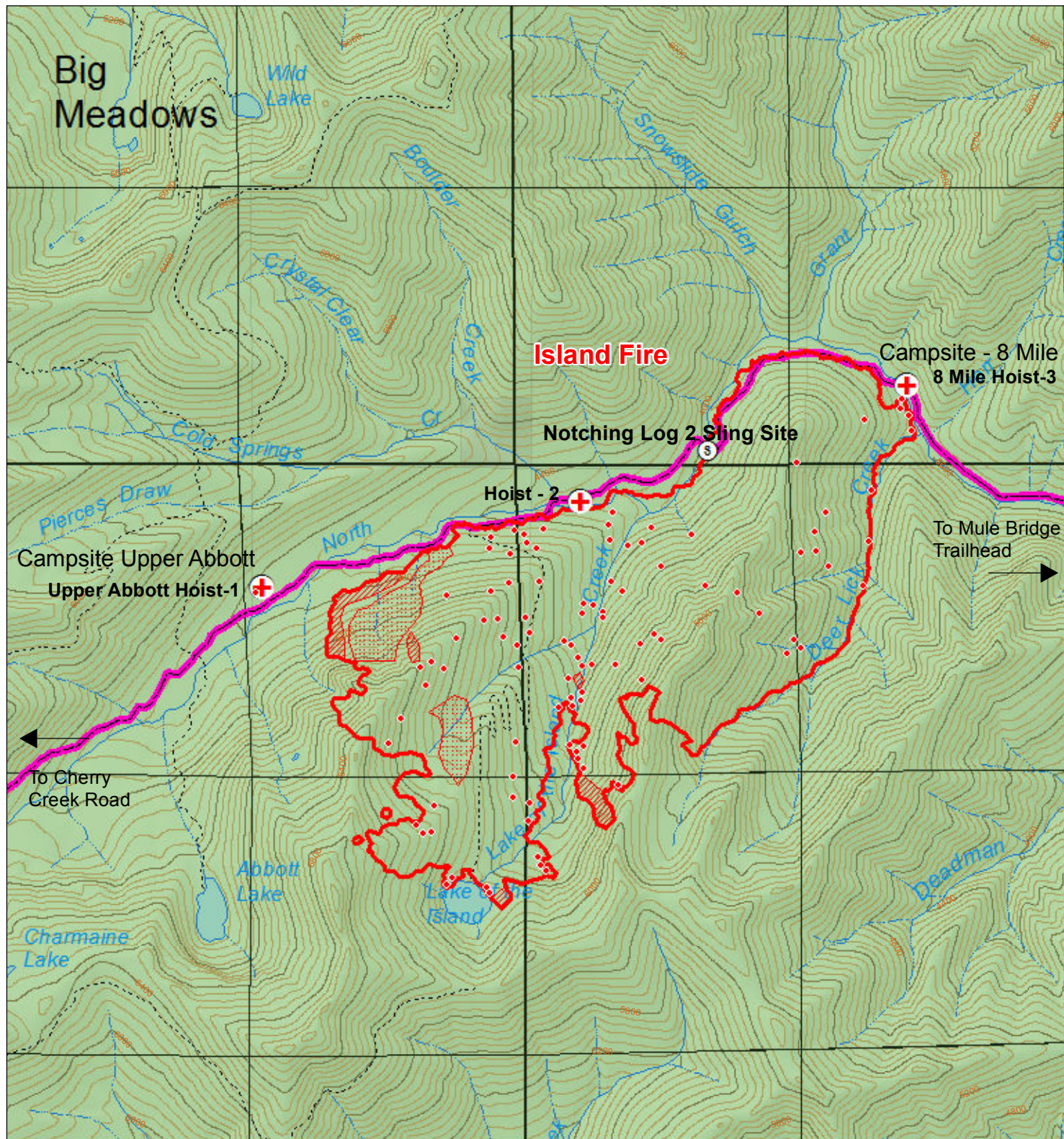




# Island Fire Incident Map

CA-KNF-004540

Salmon River Ranger District  
Klamath National Forest



### Legend

- Fire Perimeter, 7/24/2017
- Scattered Heat
- Intense Heat
- Isolated Heat Sources
- Access Trails
- Camp Site
- Helispot
- + Hoist Site
- Sling Site
- Wilderness Area
- National Forest Land



July 25, 2017, AM

1 in = 0.5 mi

