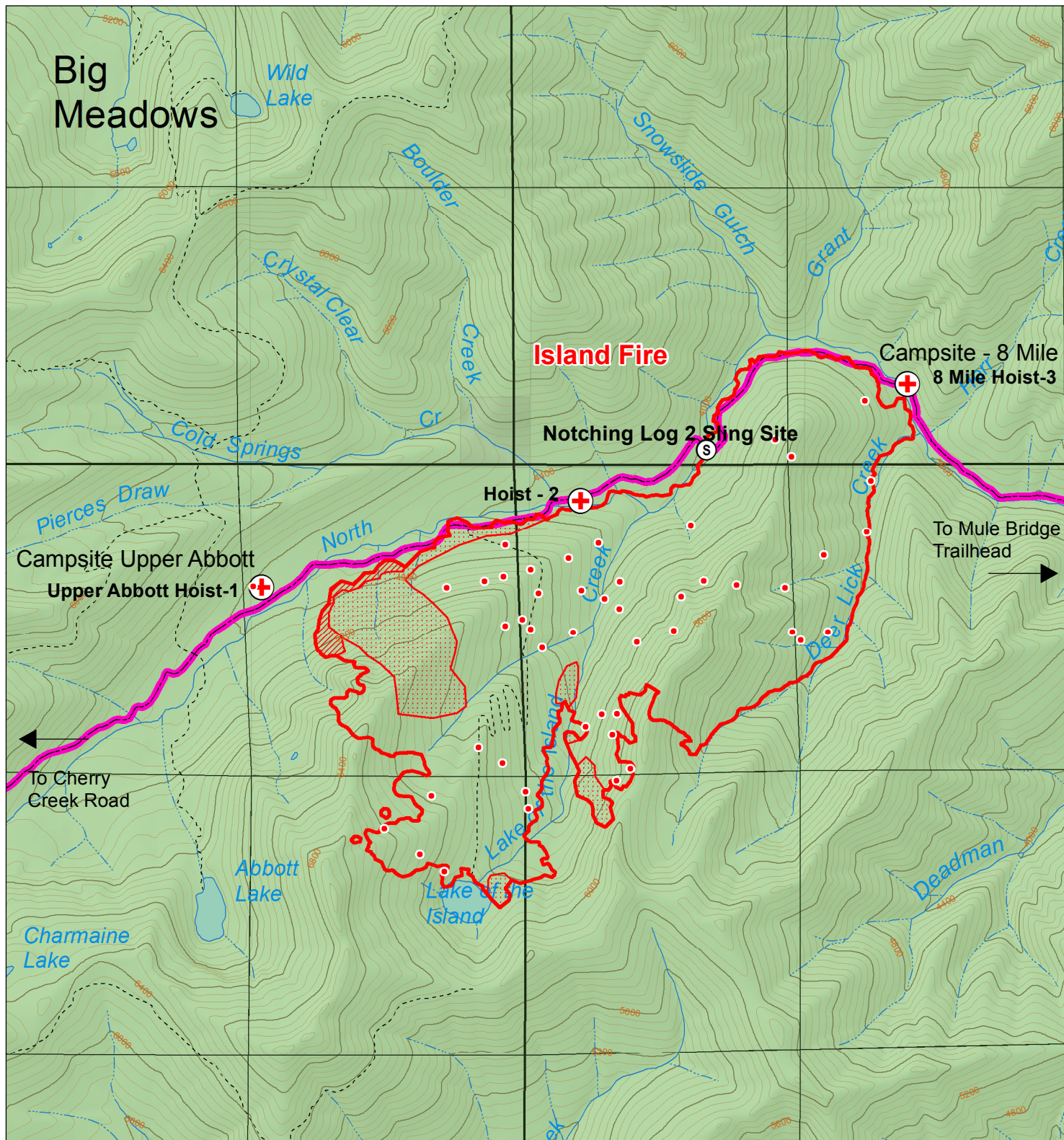




Island Fire Incident Map

CA-KNF-004540

Salmon River Ranger District
Klamath National Forest



Legend

- Fire Perimeter, 7/25/2017
- 1291 Acres
- Intense Heat
- Scattered Heat
- Isolated Heat Sources
- Camp Site
- Hoist Site
- Wilderness Area
- National Forest Land
- Helispot
- Sling Site
- Access Trails



July 26, 2017, AM

1 in = 0.5 mi

