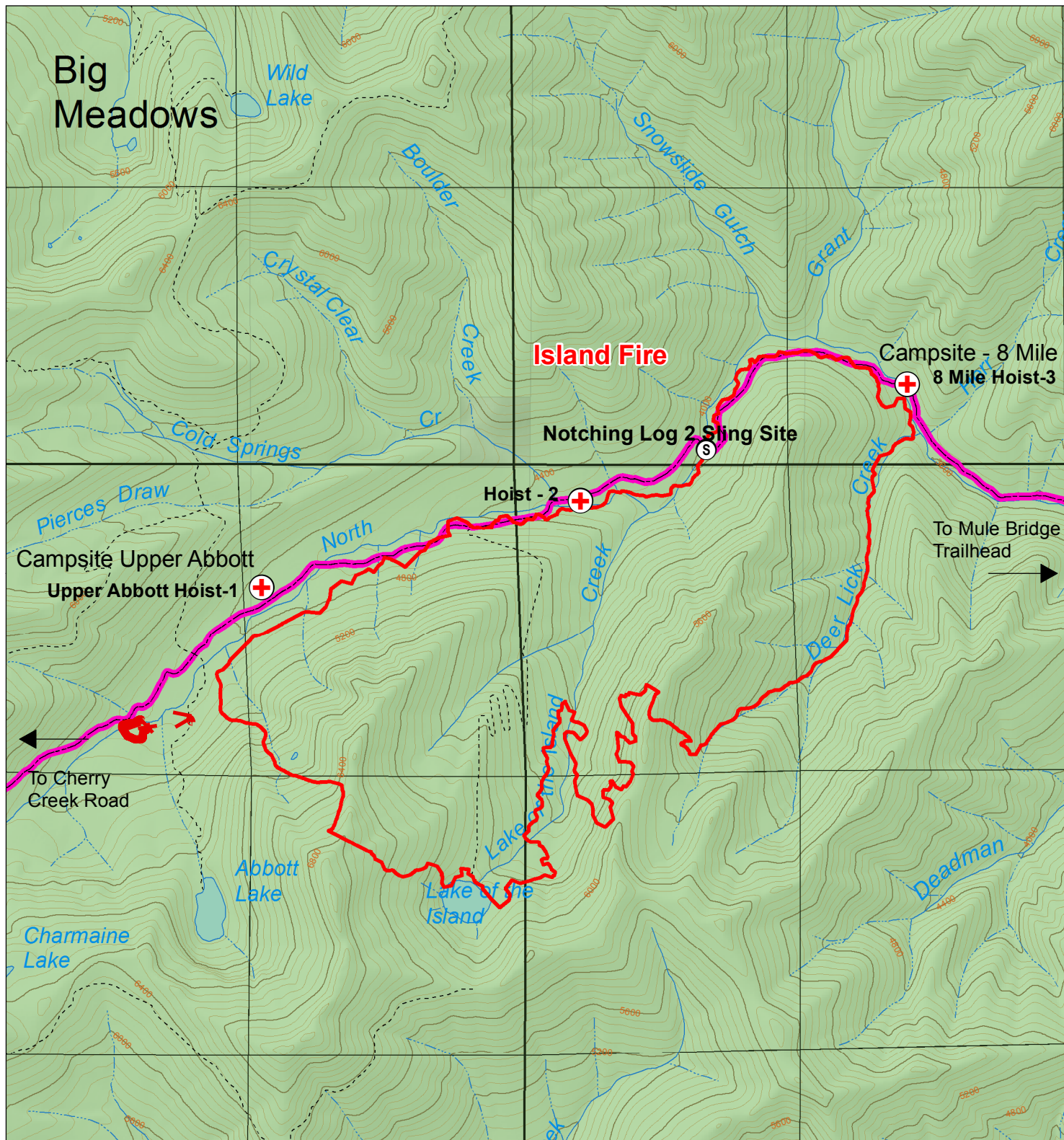




Island Fire Incident Map

CA-KNF-004540
Salmon River Ranger District
Klamath National Forest



Legend

- Fire Perimeter, 8/4/2017
- 1468 Acres
- Access Trails
- Camp Site
- + Hoist Site
- H Helispot
- S Sling Site
- Wilderness Area
- National Forest Land



1 in = 0.5 mi August 9, 2017, AM

