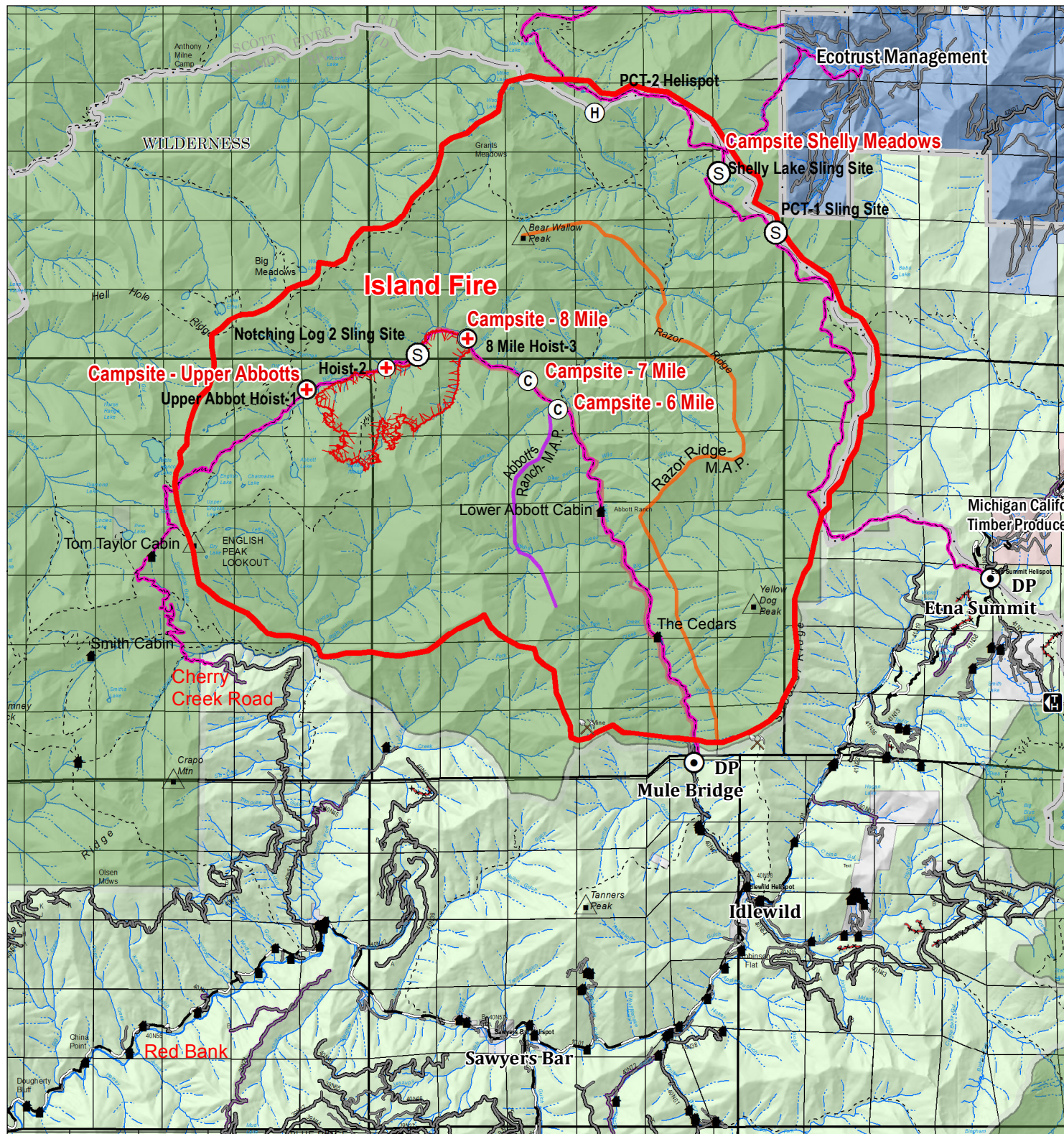




Island Fire Incident Map

CA-KNF-004540

Salmon River Ranger District
Klamath National Forest



Legend

- ▬ Planning Area
- ▬ Abbots Ranch - M.A.P.
- ⊕ Hoist Site
- Wilderness Area
- Fire Perimeter, 1314
- ▬ North Fork Salmon River - M.A.P.
- DP Drop Point
- S Sling Site
- H Helispot
- ▬ Access Trails
- ▬ Razor Ridge - M.A.P.
- Private Land within the Forest Boundary
- National Forest Land

1 in = 2 mi

July 31, 2017

