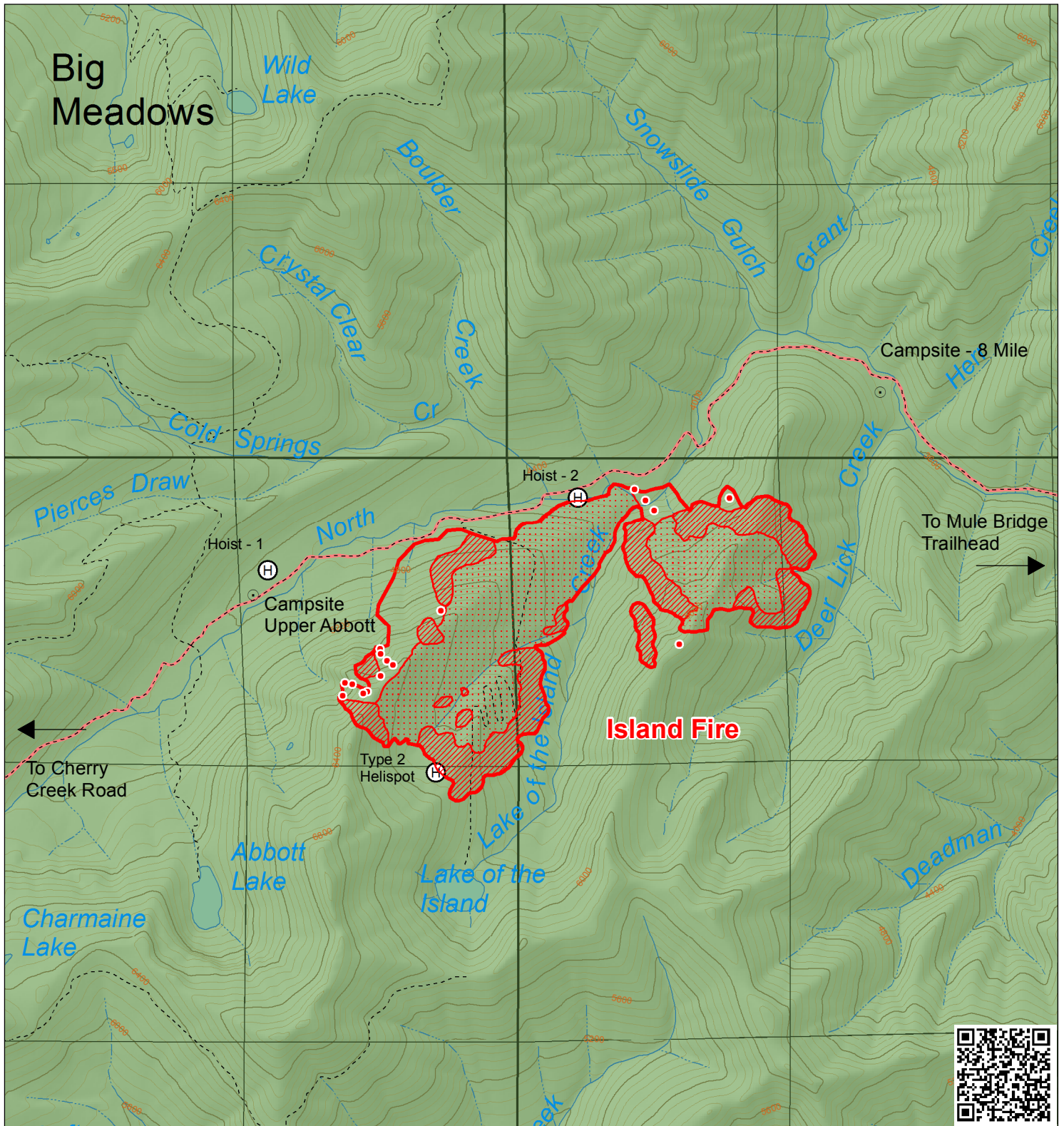




# Island Fire Incident Map

CA-KNF-004540  
Salmon River Ranger District  
Klamath National Forest



- Legend**
- Fire Perimeter, 7/8/2017**  Access Trails  Wilderness Area
  - 567 Acres  Helispots  National Forest Land
  - Isolated Heat Sources
  - Intense Heat
  - Scattered Heat

1 in = 0.5 mi  
July 8, 2017, AAM

