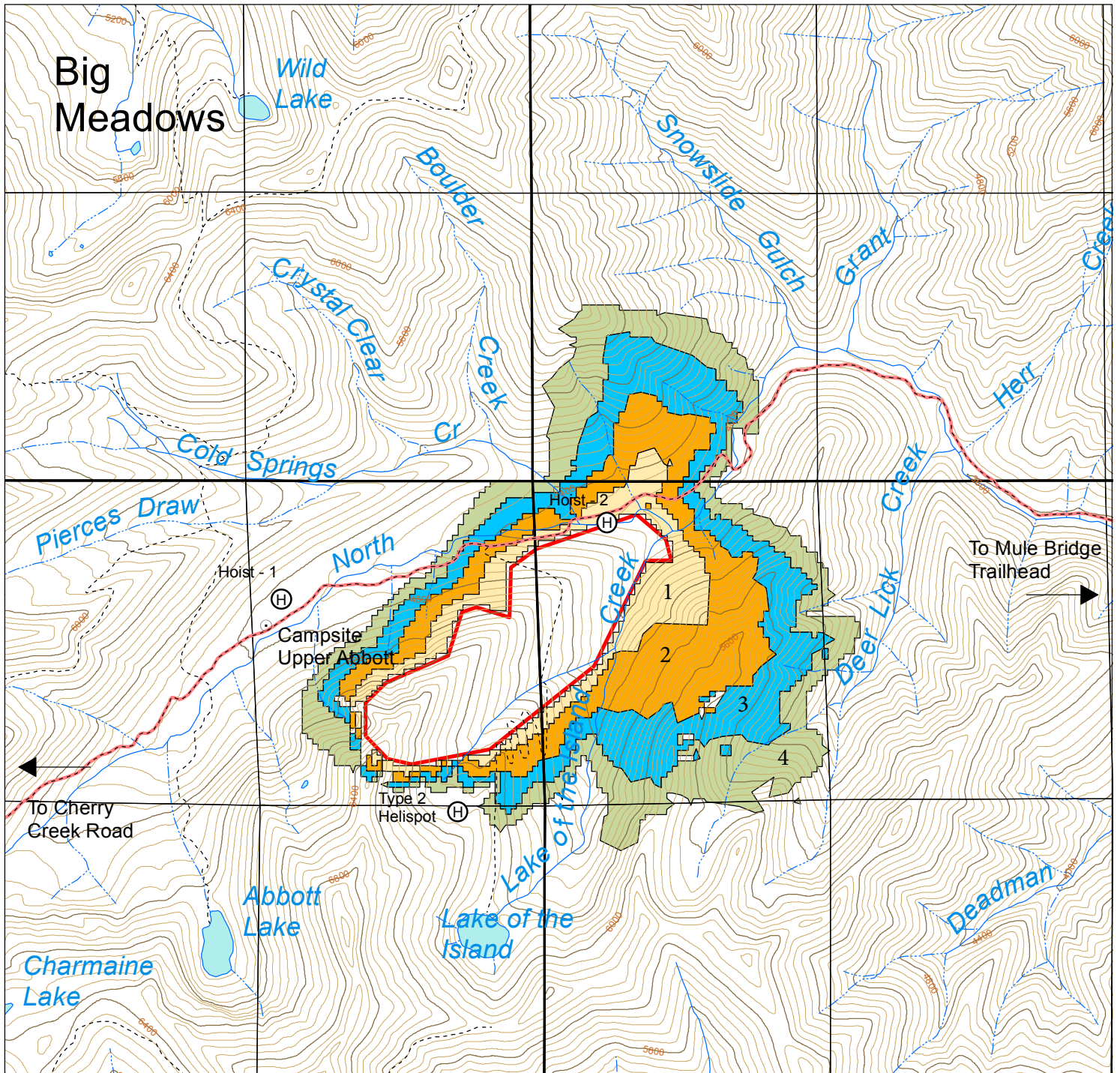




# Island Fire Incident Map

CA-KNF-004540  
Salmon River Ranger District  
Klamath National Forest



Updated analysis uses July 6 estimated perimeter of 257 acres as ignition (IR flights have not been available).  
 Uses 5 hour burn periods, 1300-1800. Barrier file was NOT used on the North Fork Salmon River.  
 Fire spotted across the river on July 5th (3-5 acres, currently contained).  
 Outputs are reasonable and model assumes no suppression action.

### Legend

- 4-Day Near Term Fire Behavior**
- 1
  - 2
  - 3
  - 4
- Burning Period**
- Access Trails
  - ⊕ Helispots

1 in = 0.5 mi

July 6, 2017, AAM

