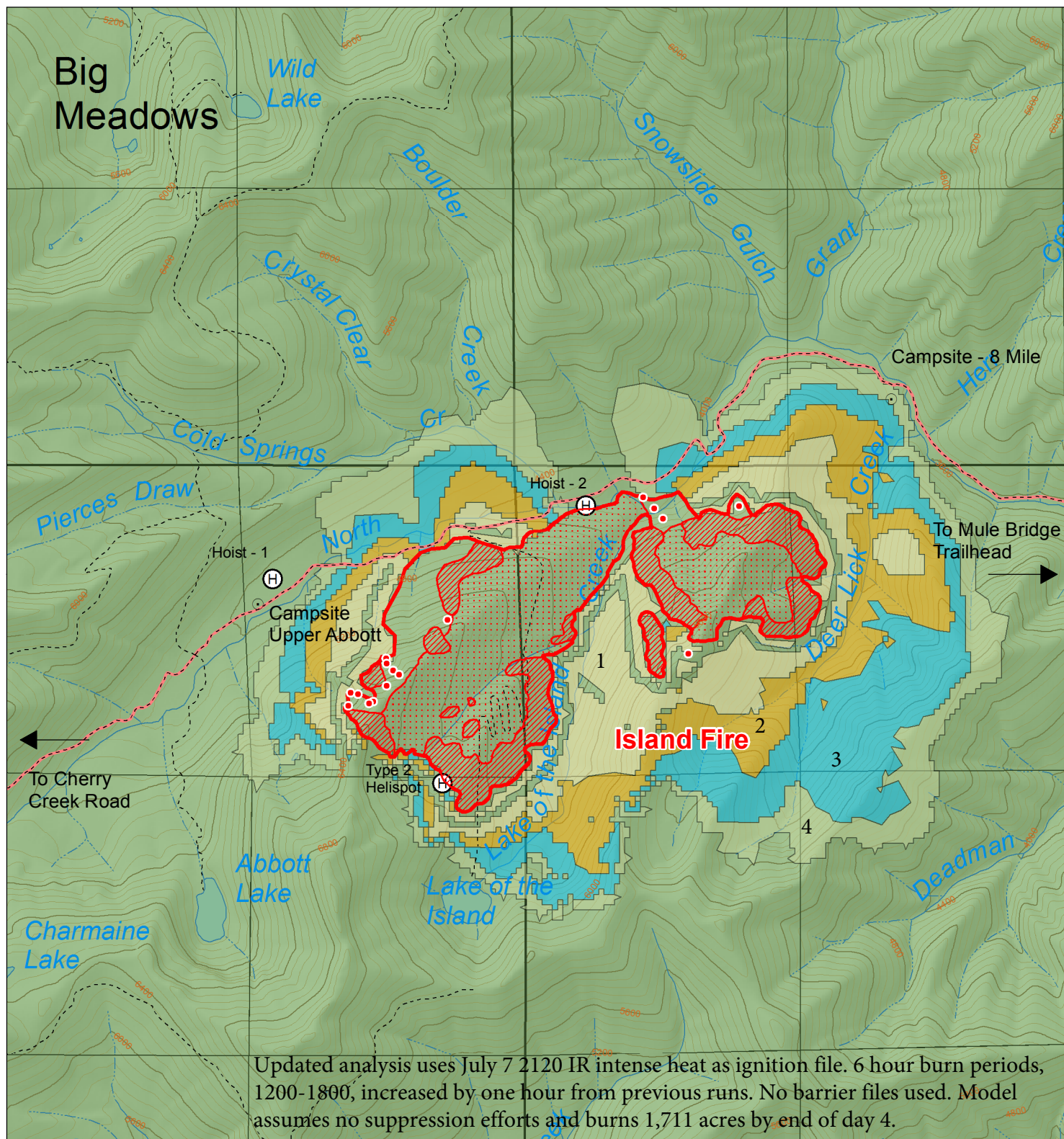




Island Fire Incident Map

CA-KNF-004540
Salmon River Ranger District
Klamath National Forest



Updated analysis uses July 7 2120 IR intense heat as ignition file. 6 hour burn periods, 1200-1800, increased by one hour from previous runs. No barrier files used. Model assumes no suppression efforts and burns 1,711 acres by end of day 4.

Legend

- | | | |
|---------------------------------|--------------------------------------|----------------------|
| Fire Perimeter, 7/8/2017 | 4-Day Near Term Fire Behavior | Access Trails |
| 567 Acres | Burning Period | Access Trails |
| Isolated Heat Sources | Intense Heat | Helispots |
| Scattered Heat | Wilderness Area | National Forest Land |

1 in = 0.5 mi

July 8, 2017, AAM

