

123°11'30"W 123°11'0"W 123°10'30"W 123°10'0"W 123°9'30"W 123°9'0"W 123°8'30"W 123°8'0"W

ISLAND FIRE CA-KNF-004540

Infrared Map
Date of Imagery: 7/9/2017 0200 PDT
Heat Perimeter: 736 Acres



Klamath National Forest

Cold Springs Creek

Boulder Creek

North Fork Salmon River

Herr Creek

41°26'30"N

41°26'0"N

41°25'30"N

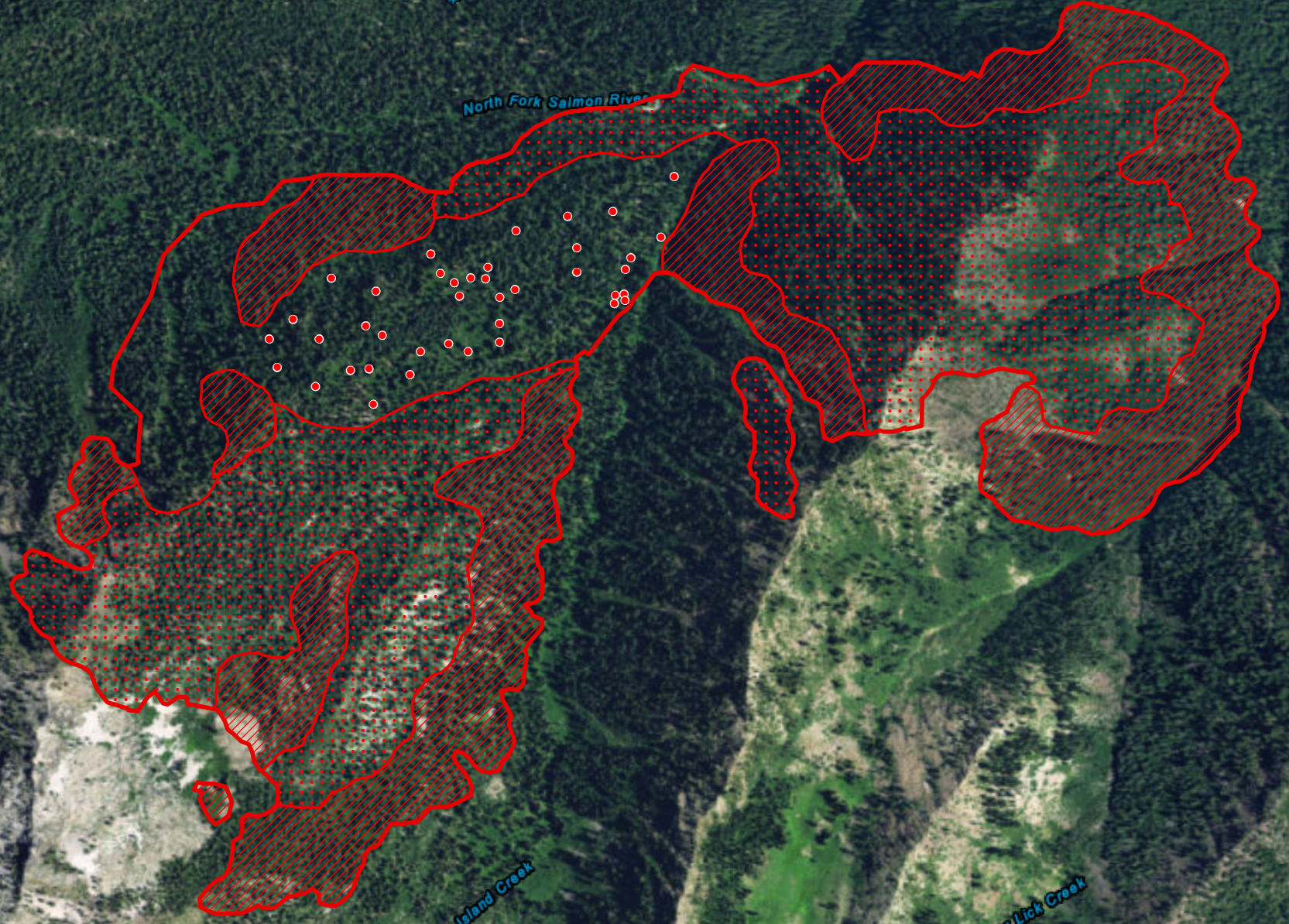
41°25'0"N

41°26'30"N





41°26'0"N

41°25'30"N

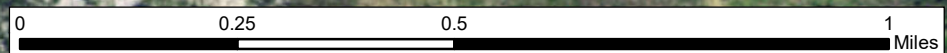
41°25'0"N



Infrared Legend

-  Heat Perimeter
-  Intense Heat
-  Scattered Heat
-  Isolated Heat Sources

UTM Zone 10N, NAD83
IRIN: Kurt Teuber, South Lake Tahoe, CA



Esri, HERE, DeLorme, MapmyIndia, © OpenStreetMap contributors, and the GIS user community, Source: Esri, DigitalGlobe, GeoEye, Earthstar Geographics, CNES/Airbus DS, USDA, USGS, AeroGRID, IGN, and the GIS User Community

123°11'30"W 123°11'0"W 123°10'30"W 123°10'0"W 123°9'30"W 123°9'0"W 123°8'30"W 123°8'0"W