

123°10'W

123°9'W

Island Fire

Heat Acres: 1,141

CA-KNF-004540

Infrared Interpretation

Imagery Date:

2017/07/14 2330 Hrs



1:14,117



41°27'N

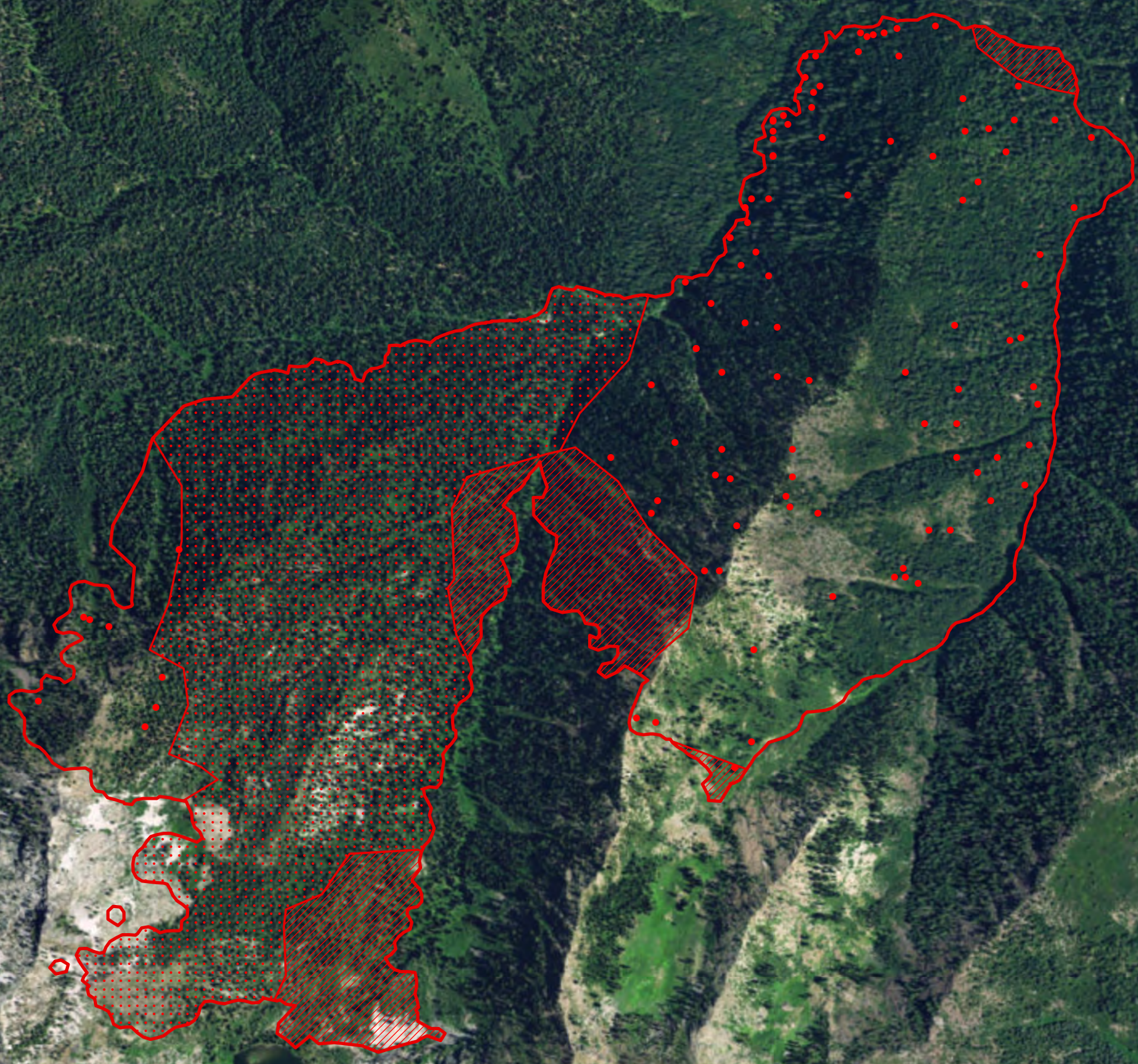
41°26'N

41°25'N

41°27'N





41°26'N

41°25'N



IRIN: K Felker
Map produced:
7/15/2017 0007 hrs



-  Heat Perimeter
-  Intense Heat Areas
-  Scattered Heat Areas
-  Isolated Heat Sources

NAD 1983 UTM Zone 10N

Getmapping, Aerogrid, IGN, IGP, swisstopo, and the GIS User Community

123°10'W

123°9'W