

123°10'W

123°9'W

Island Fire
 Heat Acres: 1,195
 CA-KNF-004540
 Infrared Interpretation
 Imagery Date:
 2017/07/16 2319 Hrs



41°27'N

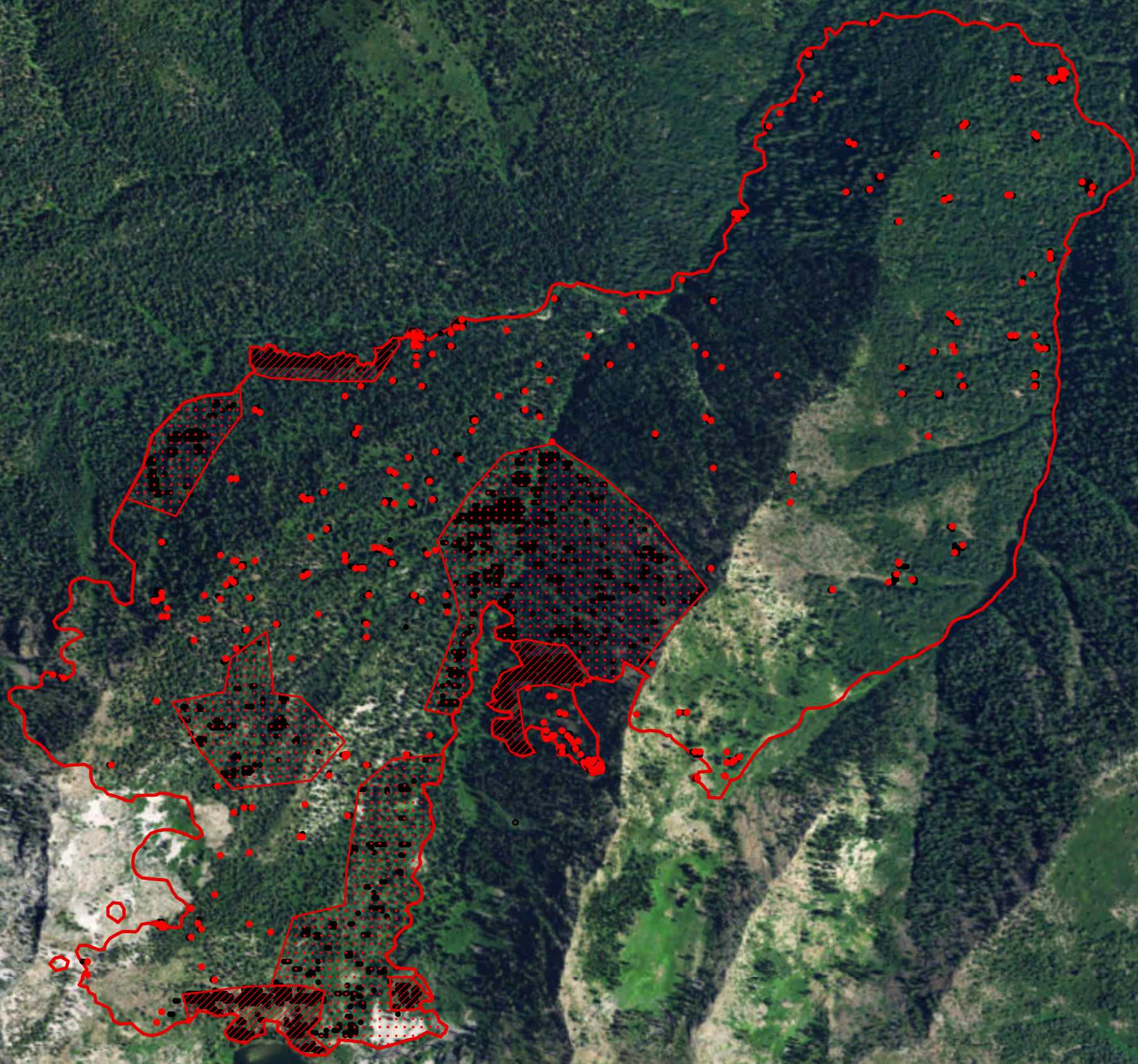
41°27'N

41°26'N

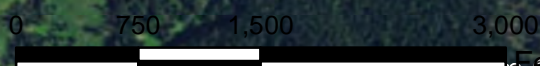
41°26'N





41°25'N

41°25'N



IRIN: K Felker
 Map produced:
 7/16/2017 2313 hrs



-  Heat Perimeter
 -  Intense Heat Areas
 -  Scattered Heat Areas
 -  Isolated Heat Sources
- NAD 1983 UTM Zone 10N

Getmapping, Aerogrid, IGN, IGP, swisstopo, and the GIS User Community

123°10'W

123°9'W