

Island Fire
Heat Acres: 1,229
CA-KNF-004540
Infrared Interpretation
Imagery Date:
2017/07/20 2131 Hrs



41°27'N

41°26'N

41°25'N

41°27'N

41°26'N

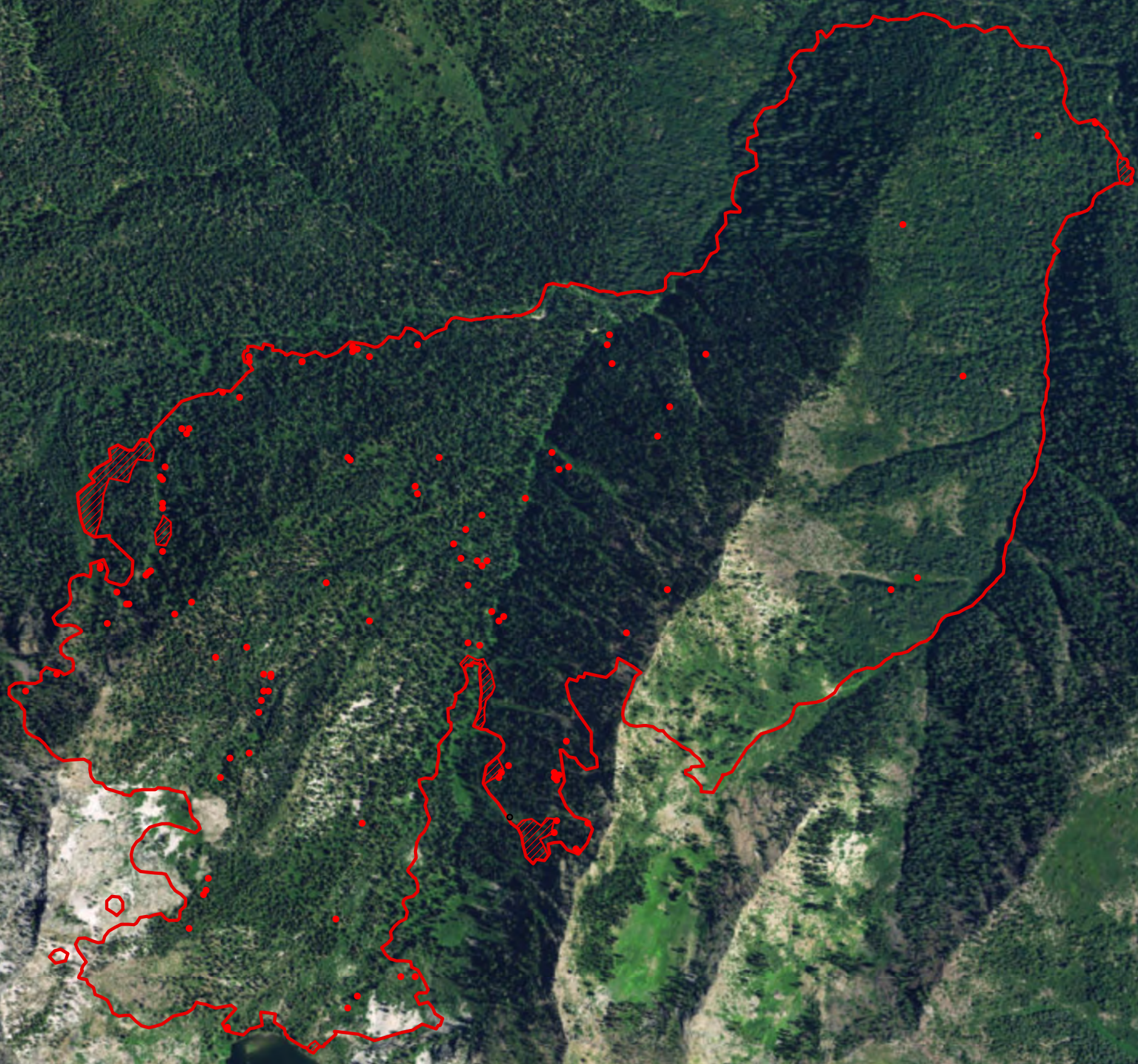
41°25'N





123°10'W

123°9'W

123°10'W

123°9'W



-  Heat Perimeter
 -  Intense Heat Areas
 -  Scattered Heat Areas
 -  Isolated Heat Sources
- NAD 1983 UTM Zone 10N

IRIN: K Felker
Map produced:
7/20/2017 2227 hrs



Getmapping, Aerogrid, IGN, IGP, swisstopo, and the GIS User Community