











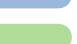

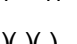

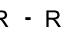




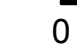




Salmon August Complex
 Klamath National Forest
 August 24 2017 DAY

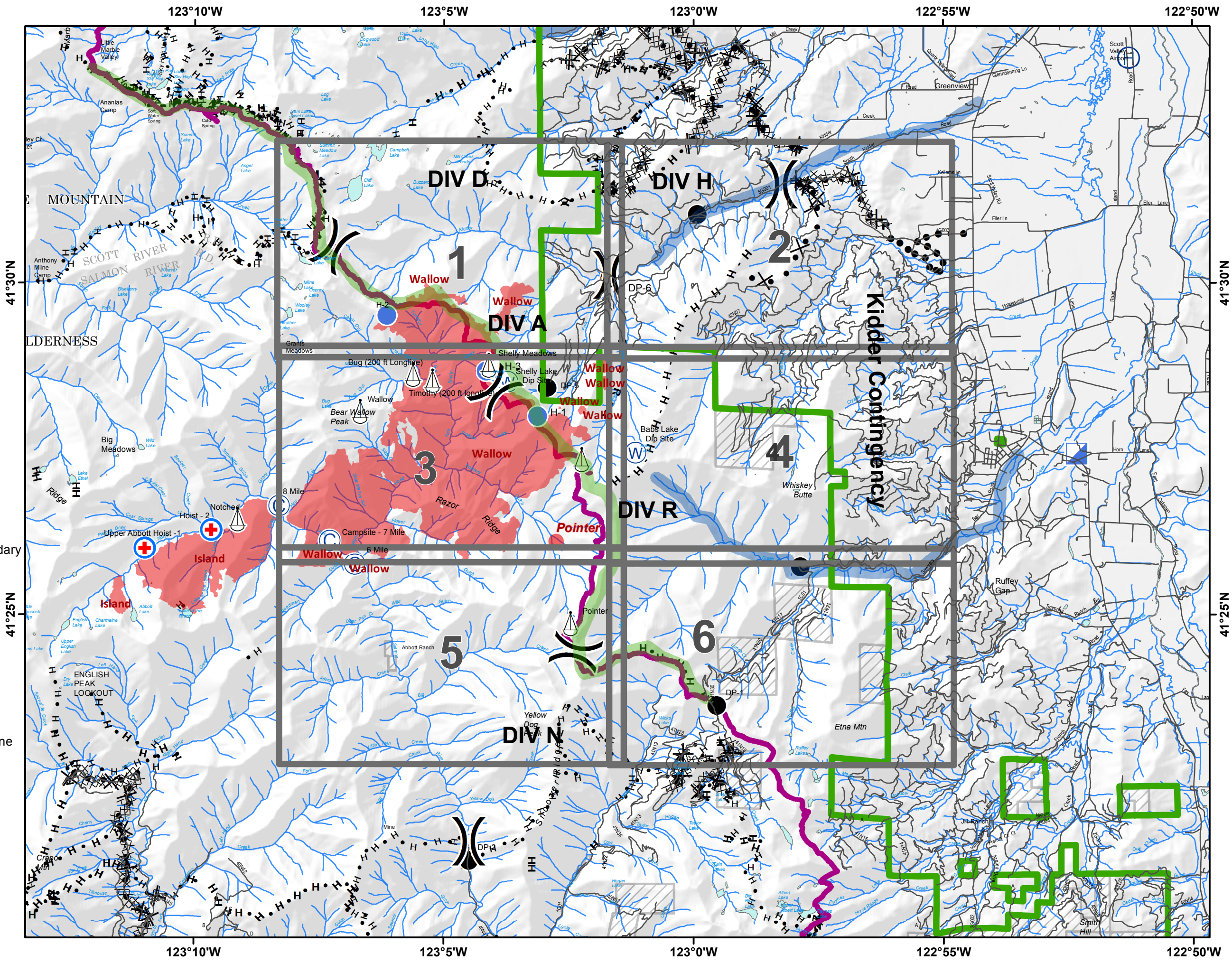
IAP Maps

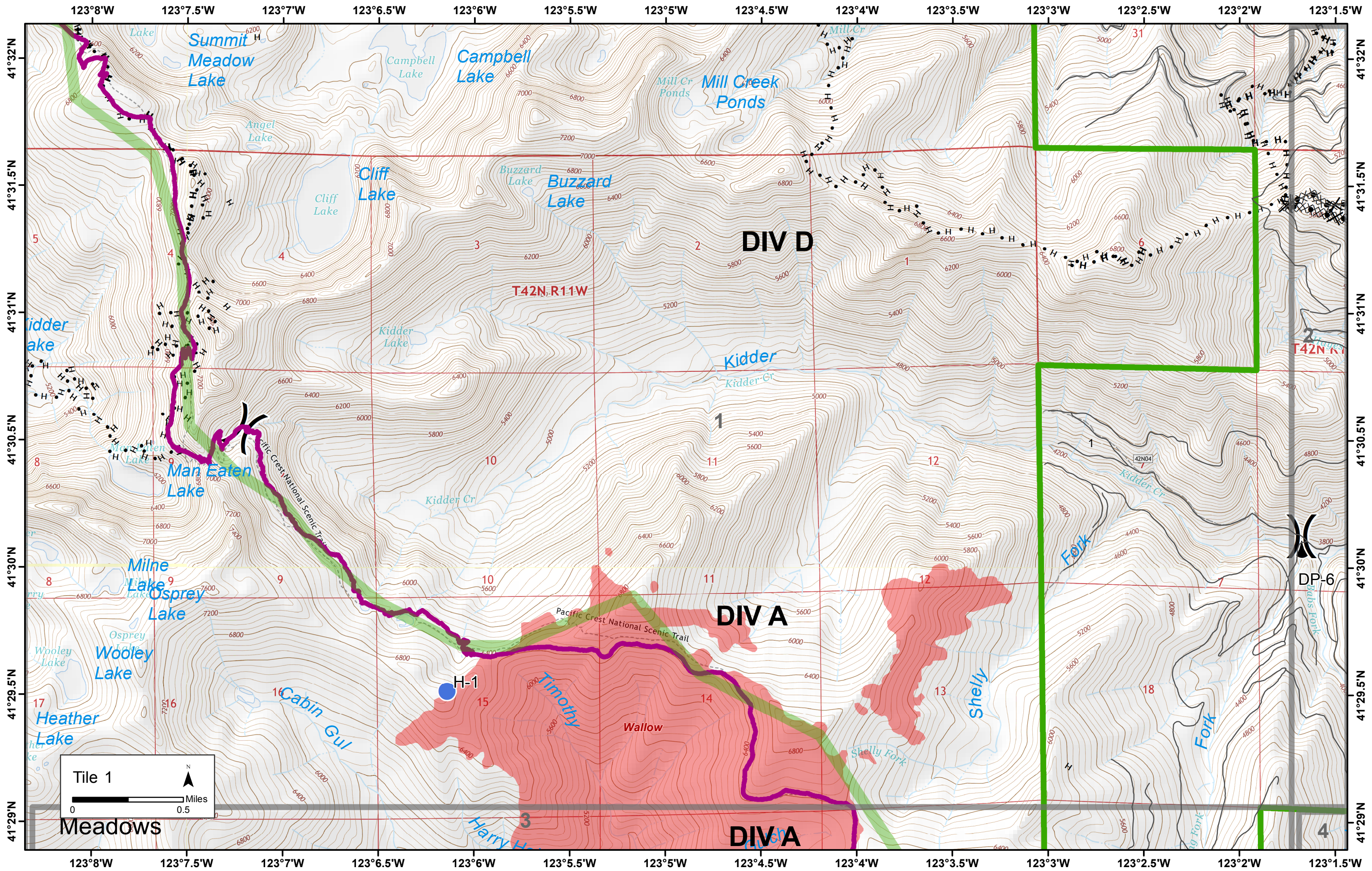
-  Division
-  Camp
-  Drop Point
-  Helibase
-  Helispot
-  Incident Command Post
-  MediVac Site
-  Sling Site
-  Water Source
-  FirePolygon
-  Pacific Crest Trail (PCT)
-  Roads
-  Private Land within Forest Boundary
-  Forest Boundary
-  Avoidance Area
-  Watershed Divide
-  Completed Dozer Line
-  H - H Hand Line
-  (X) Highlighted Geographic Feature
-  X • Proposed Dozer Line
-  R - R Improved Road as Completed Line
-  • • Contingency Line
-  H • H Previous Hand Line
-  X • Previous Dozer Line

N




0 1 2 Miles





DIV D

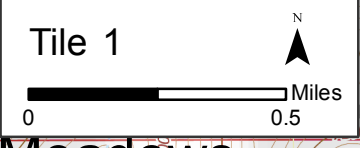
DIV A

DIV A

T42N-R11W

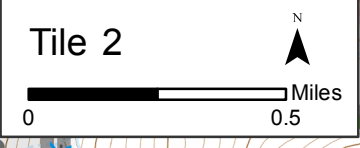
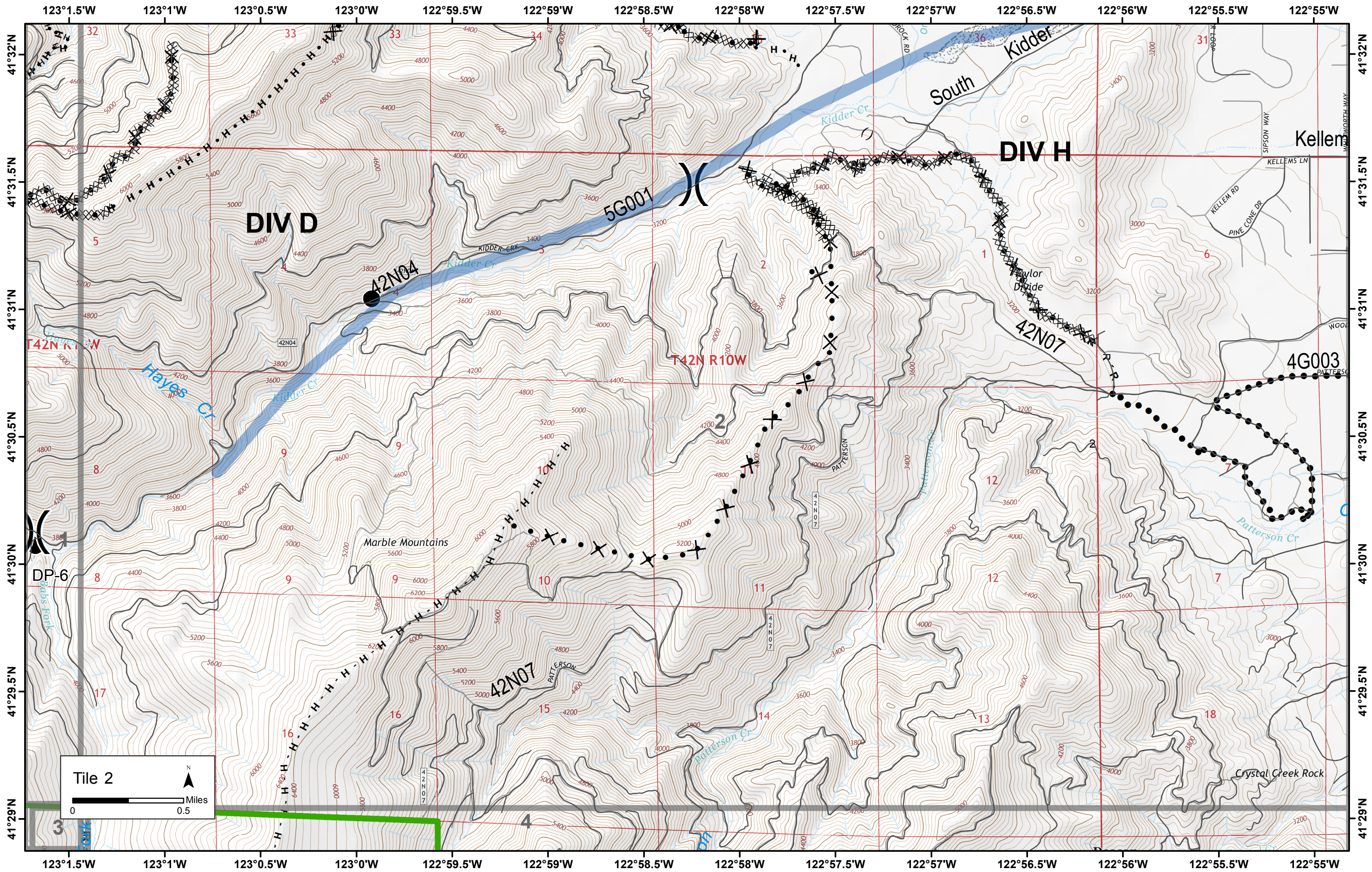
T42N-R11W

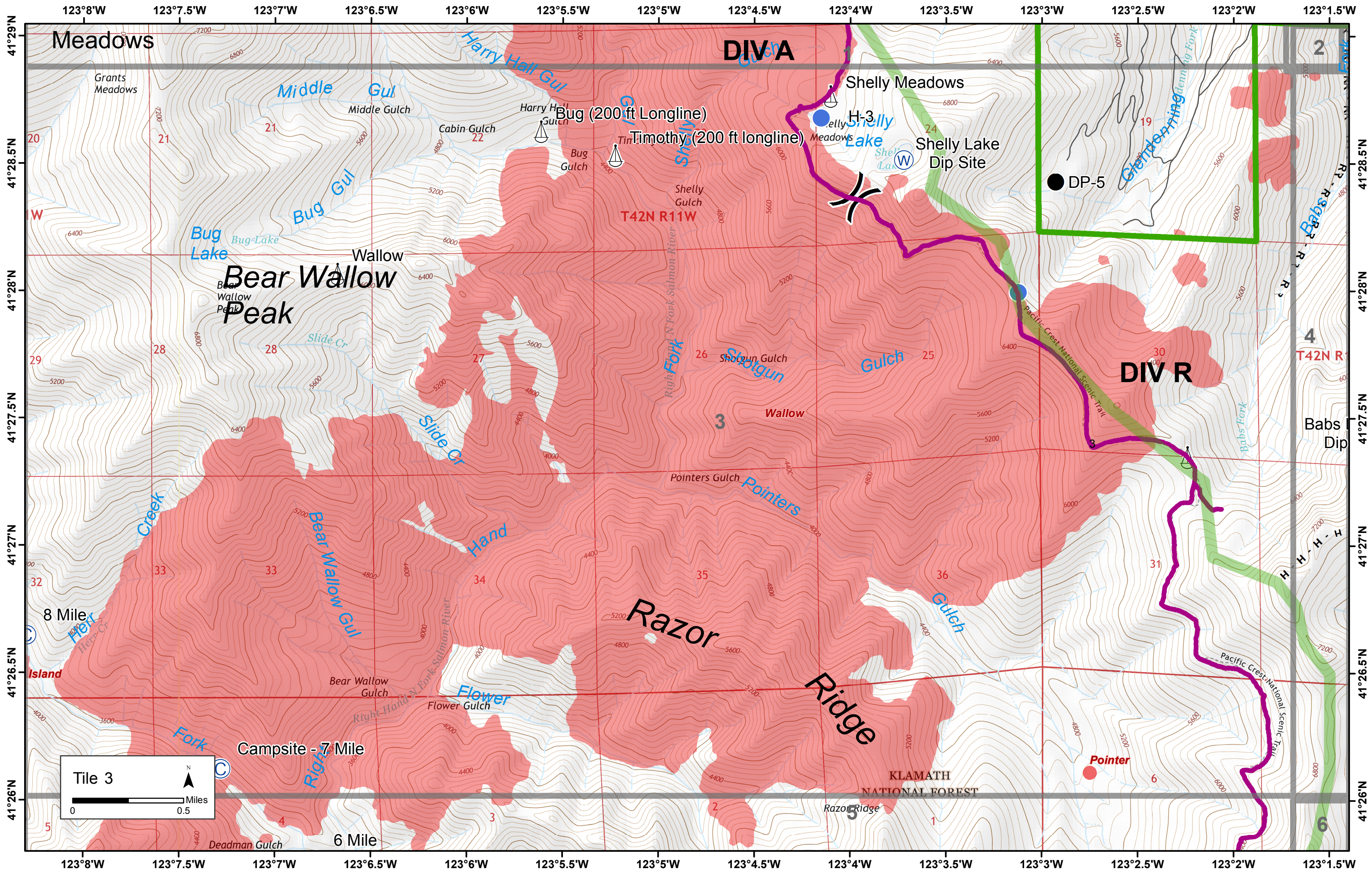
DP-6



Meadows

4





DIV A

Bear Wallow Peak

Razor Ridge

DIV R

Tile 3

0 0.5 Miles

North Arrow

DP-5

Bug (200 ft Longline)

Timothy (200 ft longline)

Shelly Meadows

Shelly Lake Dip Site

Campsite - 7 Mile

6 Mile

8 Mile

Island

Pointer

Razor Ridge

KLAMATH NATIONAL FOREST

2

4

Babs Dip

41°27'N

41°26.5'N

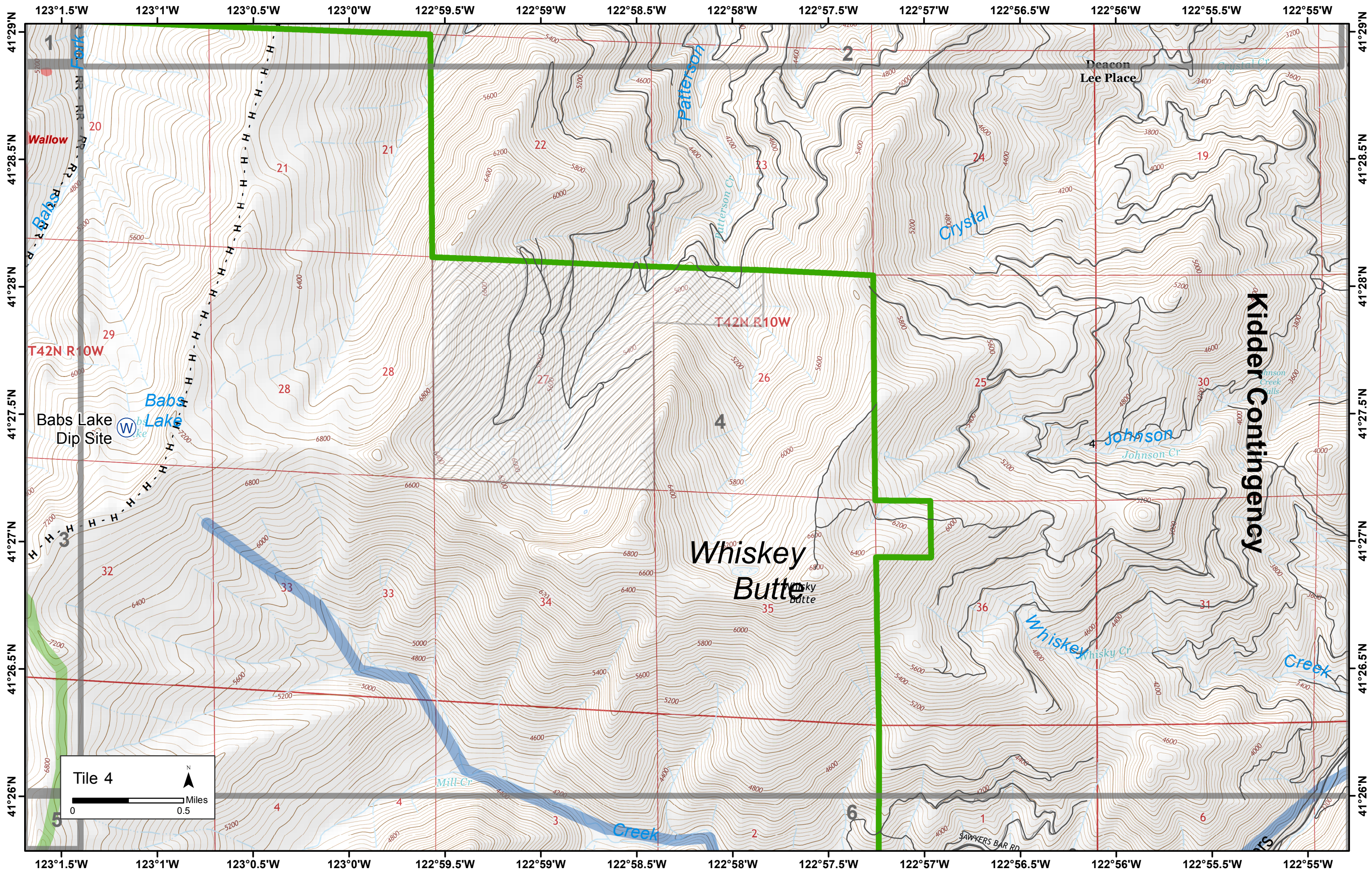
41°26'N

6

41°26'N

41°29'N
41°28.5'N
41°28'N
41°27.5'N
41°27'N
41°26.5'N
41°26'N

123°8'W
123°7.5'W
123°7'W
123°6.5'W
123°6'W
123°5.5'W
123°5'W
123°4.5'W
123°4'W
123°3.5'W
123°3'W
123°2.5'W
123°2'W
123°1.5'W



Whiskey Butte

Kidder Contingency

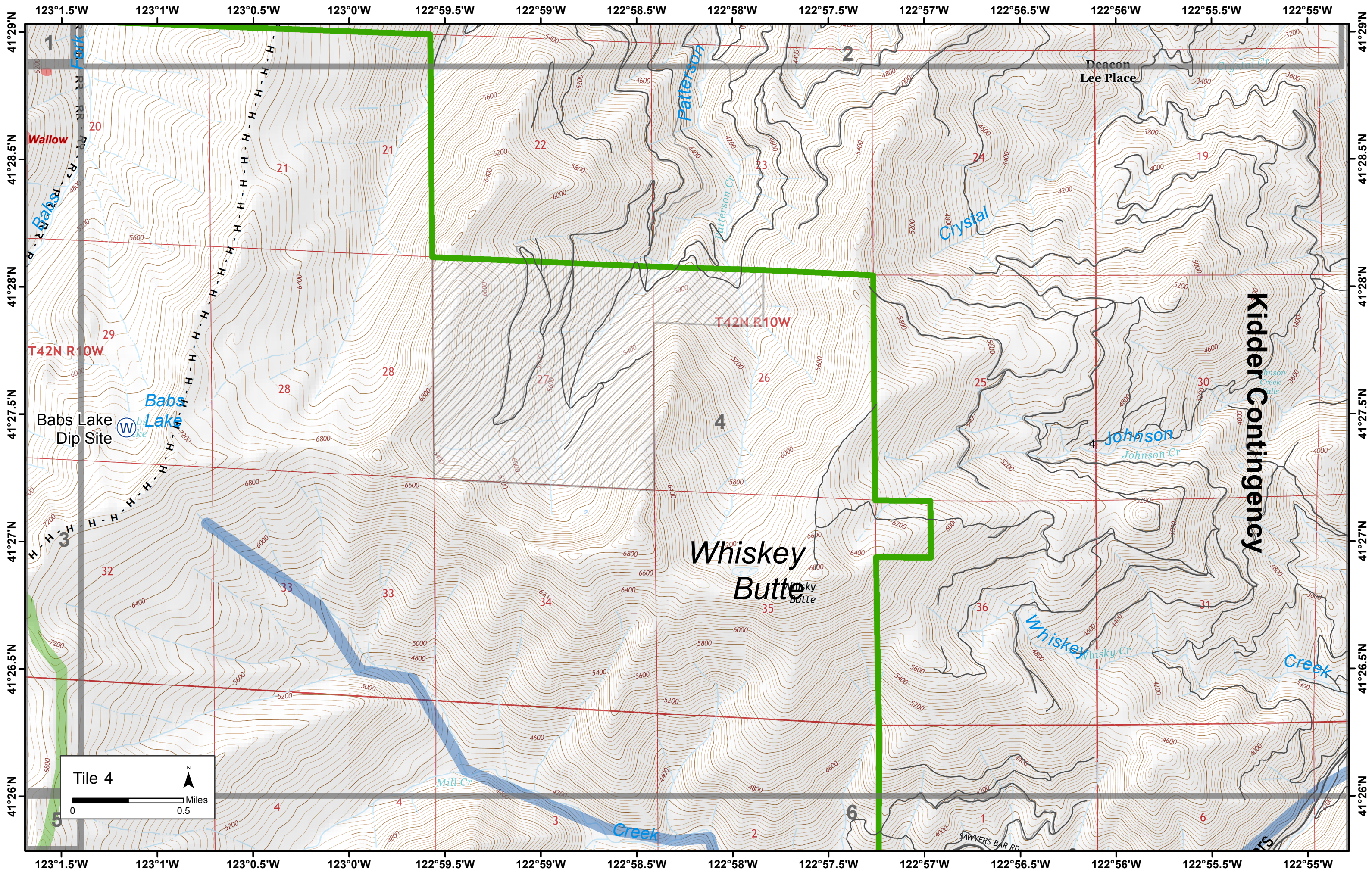
Deacon Lee Place

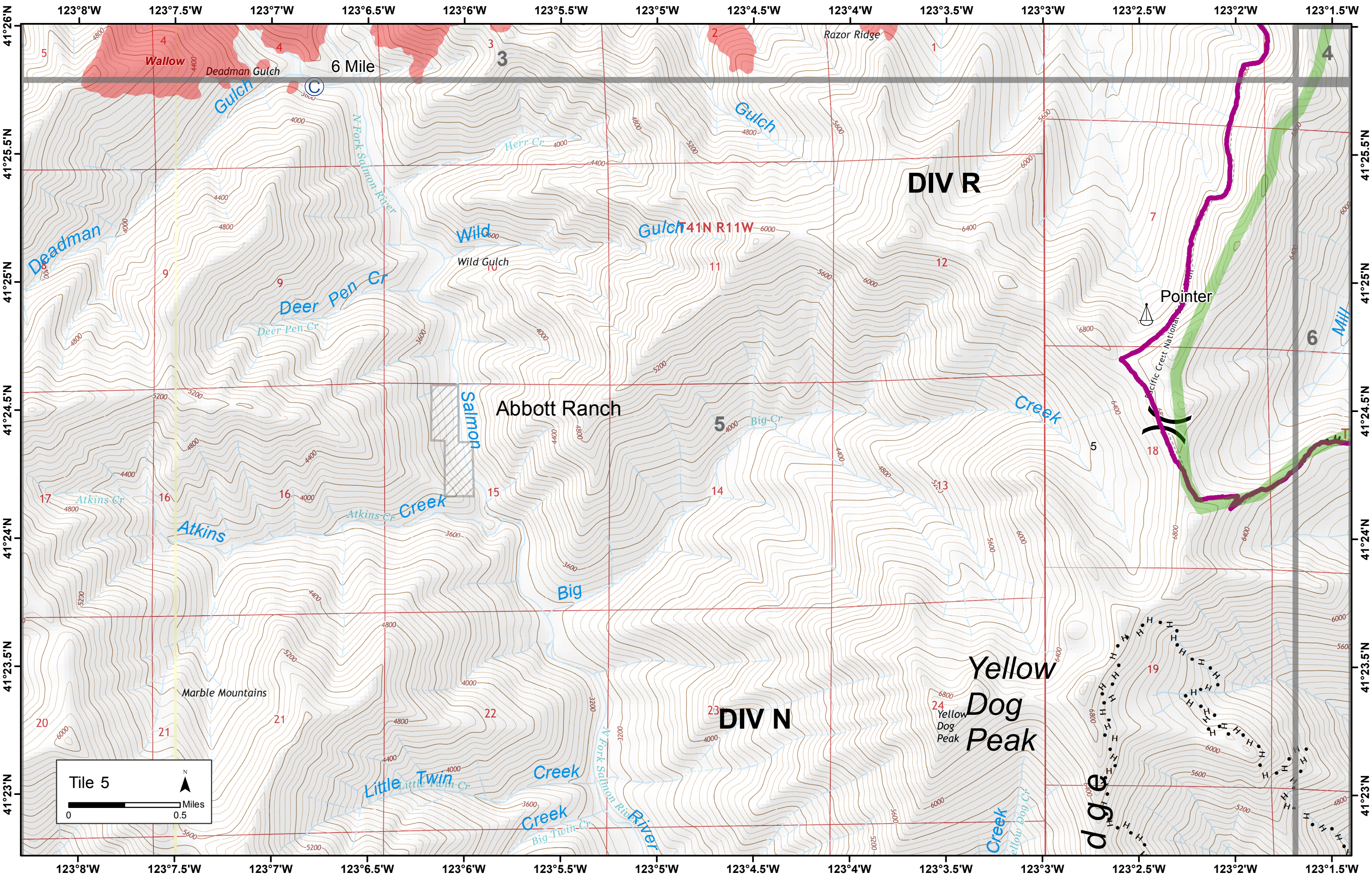
Babs Lake Dip Site

Tile 4

0 0.5 Miles

North Arrow





Tile 5

N

Miles

0 0.5

DIV R

DIV N

Abbott Ranch

Yellow Dog Peak

Pointer



d g e

DIV R

DIV N

Abbott Ranch

Yellow Dog Peak

Pointer



d g e

