

DIV D

DIV A

DIV H

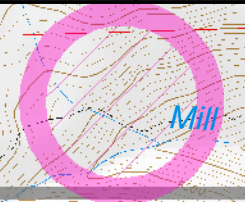
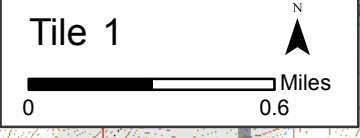
Dip Site -
Longline Only

Bug
(200 ft
Longline)

Shelly Sling

Dip Site

Grants
Meadows



C3

1

2

H-2

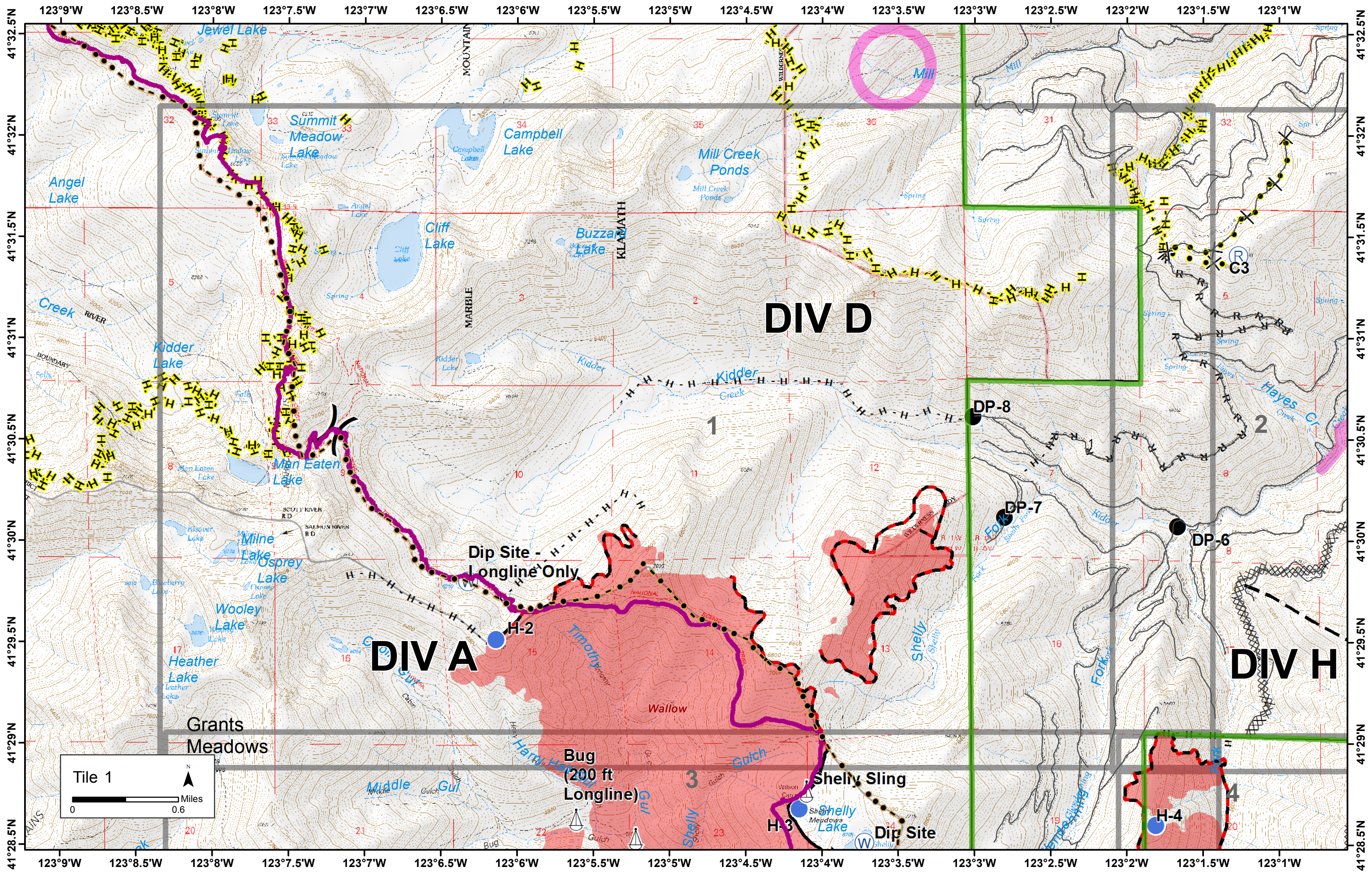
H-3

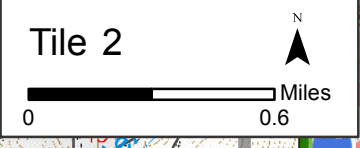
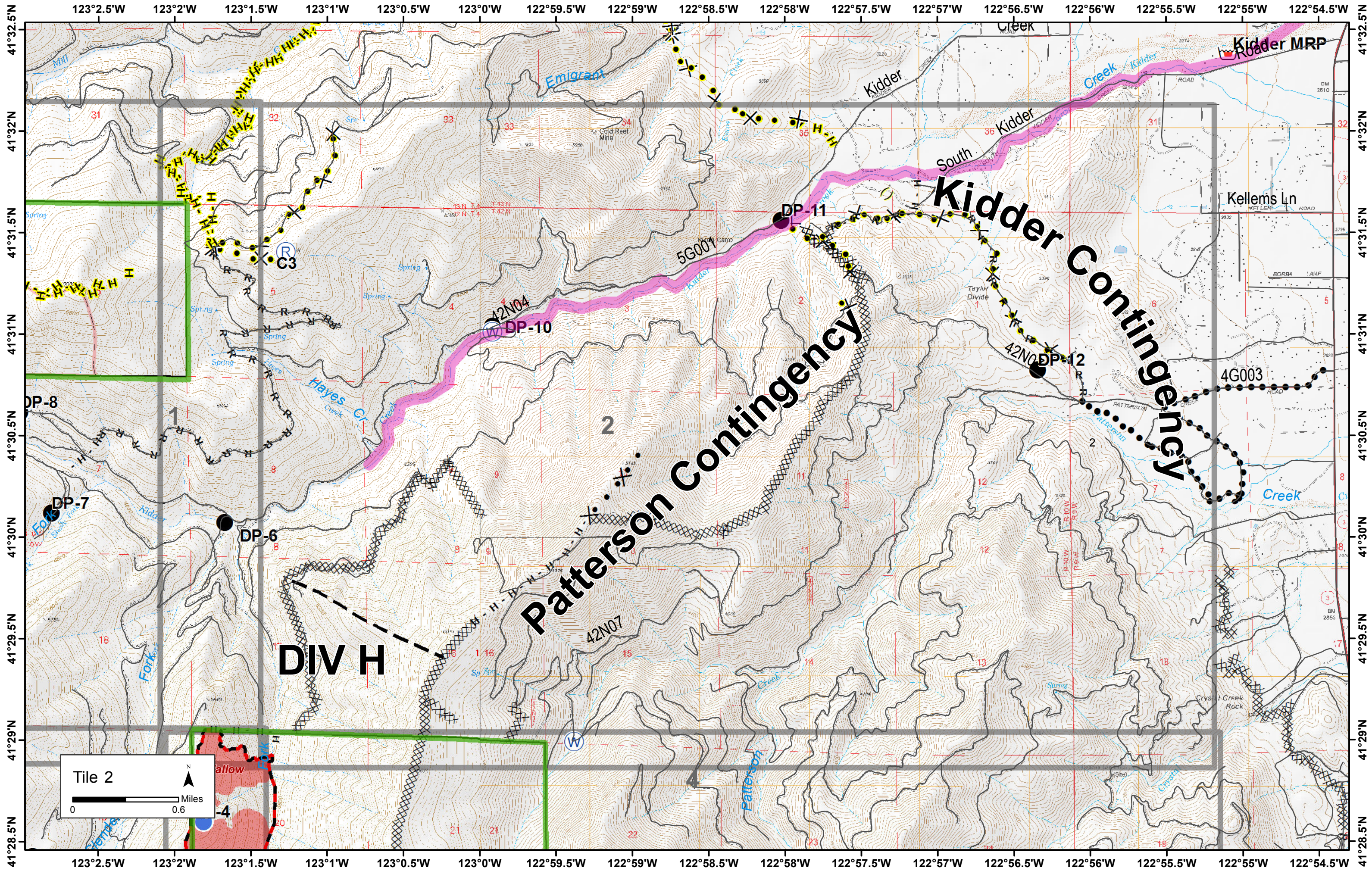
H-4

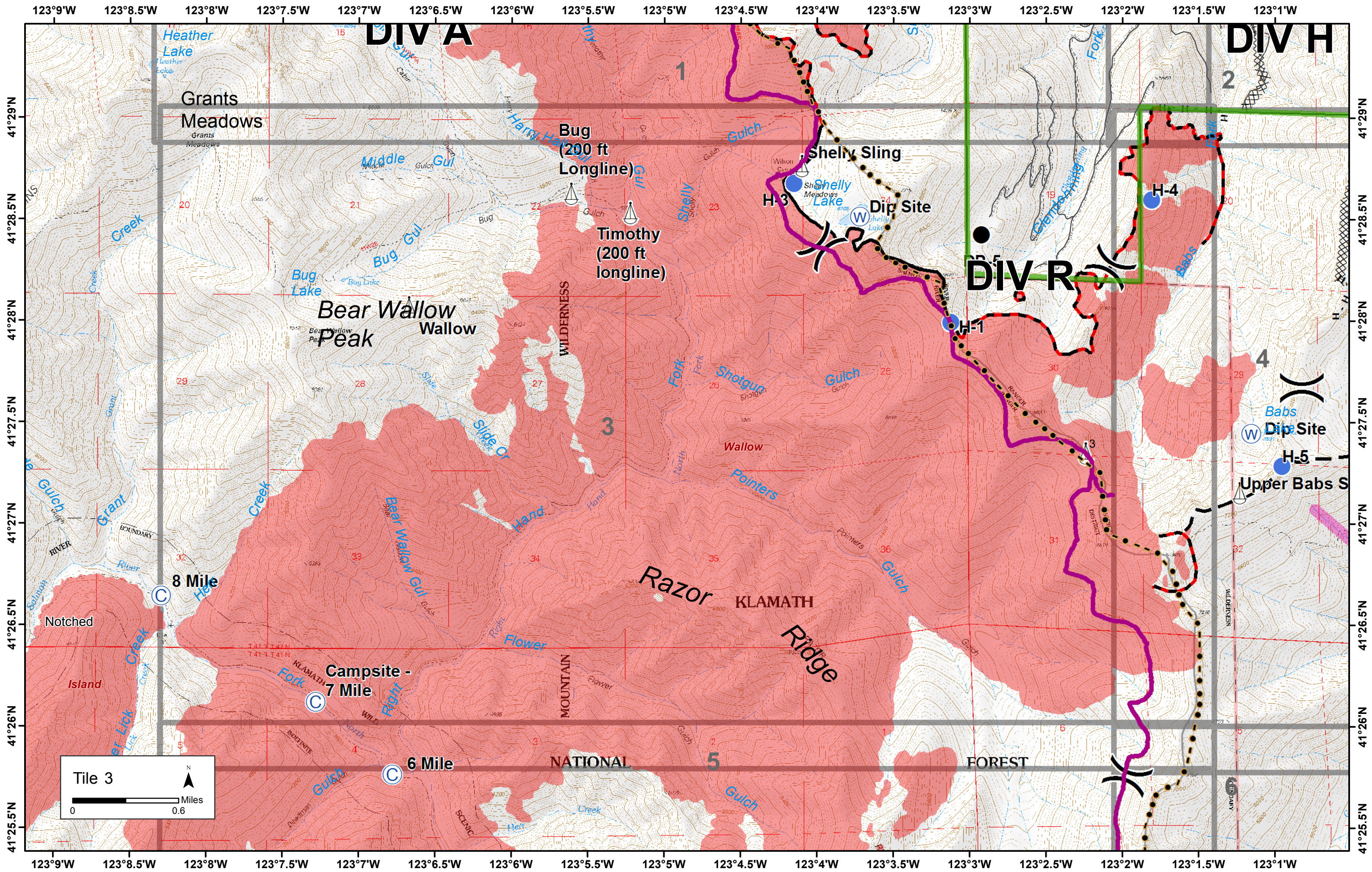
DP-8

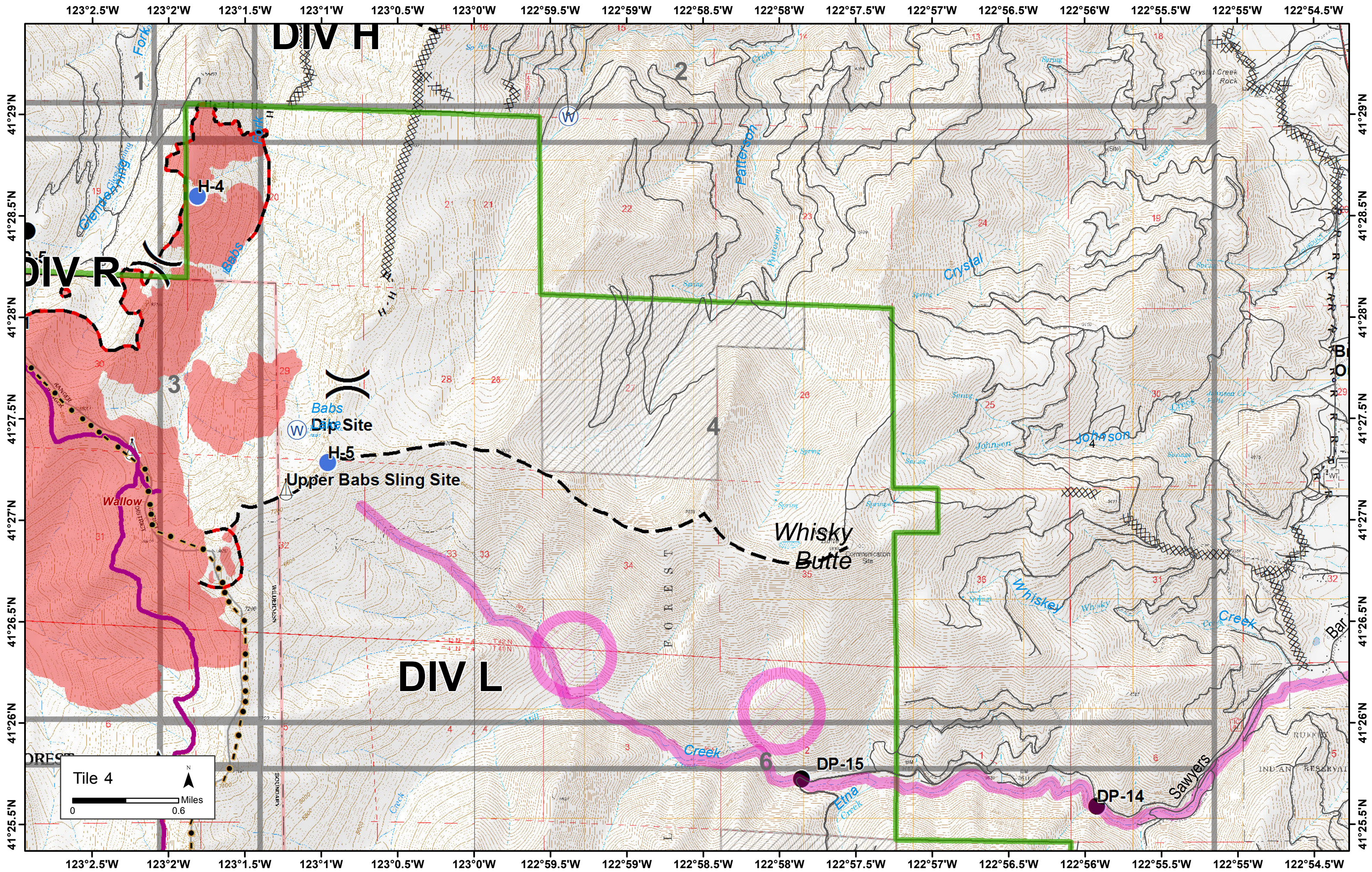
DP-7

DP-6





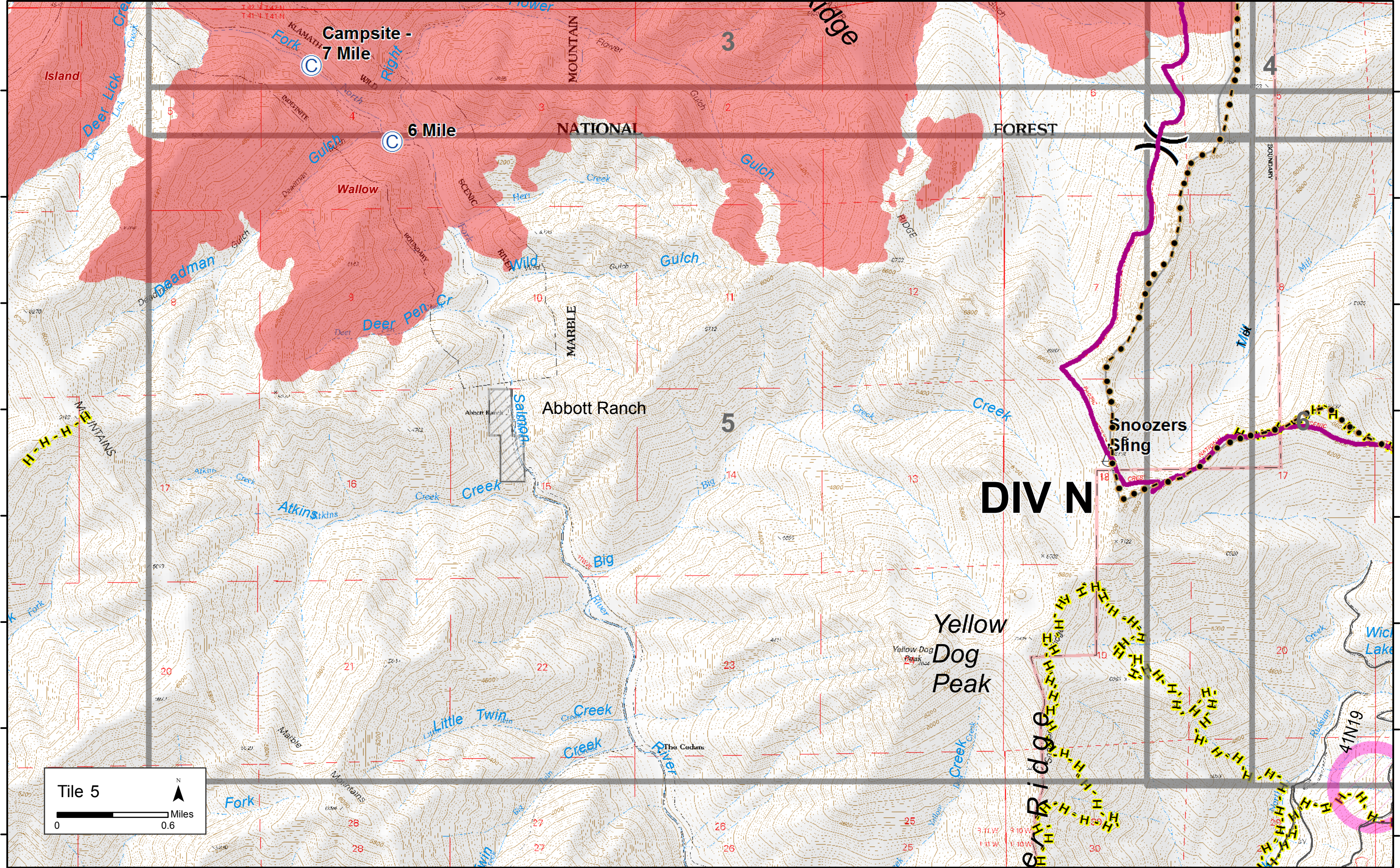




123°9'W 123°8.5'W 123°8'W 123°7.5'W 123°7'W 123°6.5'W 123°6'W 123°5.5'W 123°5'W 123°4.5'W 123°4'W 123°3.5'W 123°3'W 123°2.5'W 123°2'W 123°1.5'W 123°1'W

41°26'N
41°25.5'N
41°25'N
41°24.5'N
41°24'N
41°23.5'N
41°23'N
41°22.5'N

41°26'N
41°25.5'N
41°25'N
41°24.5'N
41°24'N
41°23.5'N
41°23'N
41°22.5'N



Campsite -
7 Mile

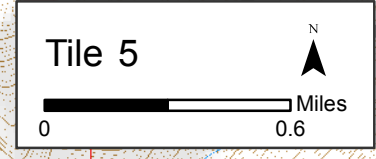
6 Mile

Abbott Ranch

Snoozers
Spring

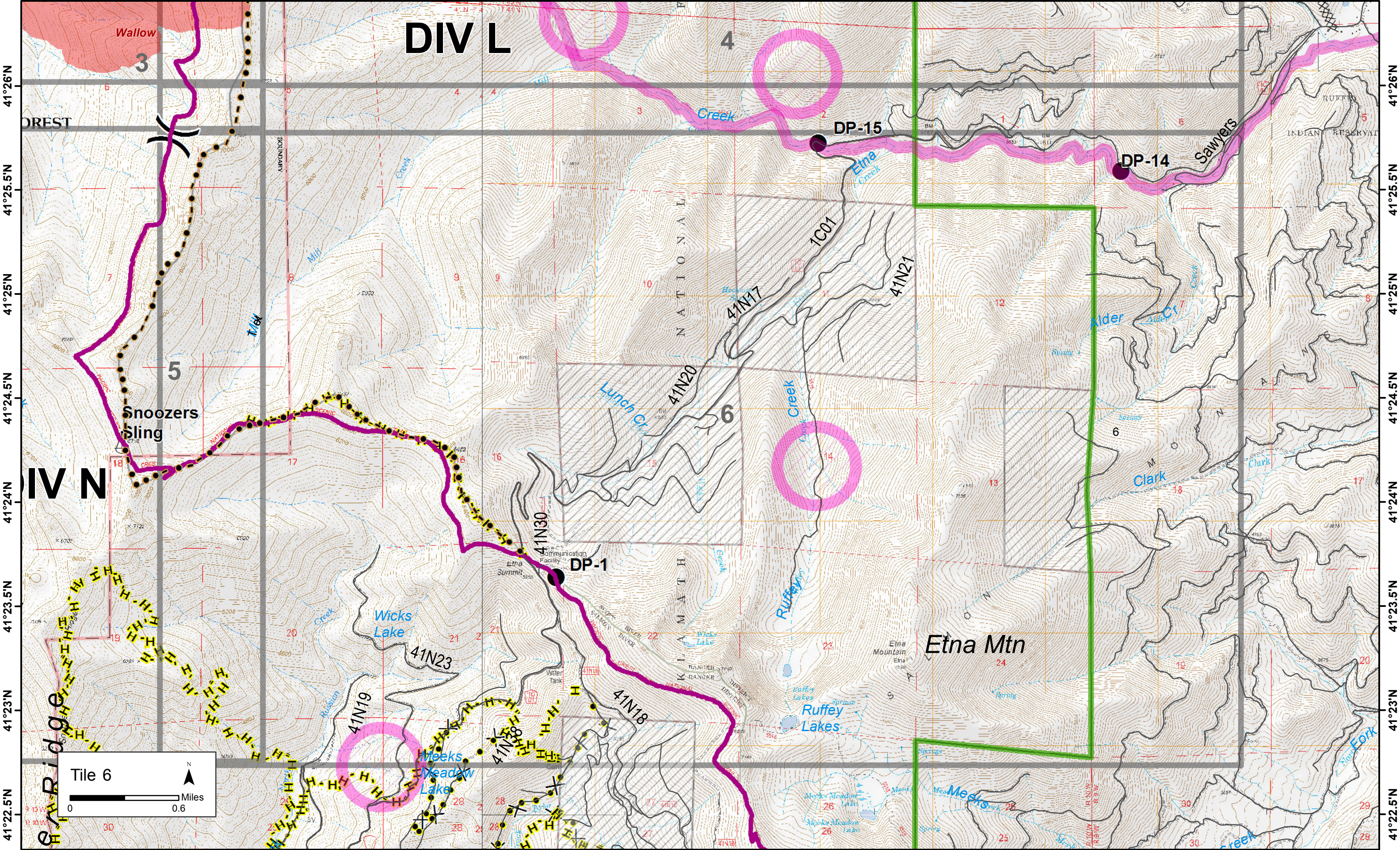
Yellow
Dog
Peak

DIV N



123°9'W 123°8.5'W 123°8'W 123°7.5'W 123°7'W 123°6.5'W 123°6'W 123°5.5'W 123°5'W 123°4.5'W 123°4'W 123°3.5'W 123°3'W 123°2.5'W 123°2'W 123°1.5'W 123°1'W

123°2.5'W 123°2'W 123°1.5'W 123°1'W 123°0.5'W 123°0'W 122°59.5'W 122°59'W 122°58.5'W 122°58'W 122°57.5'W 122°57'W 122°56.5'W 122°56'W 122°55.5'W 122°55'W 122°54.5'W



DIV L

DIV N

Tile 6

0 0.6 Miles

N

41°26'N
41°25.5'N
41°25'N
41°24.5'N
41°24'N
41°23.5'N
41°23'N
41°22.5'N

41°26'N
41°25.5'N
41°25'N
41°24.5'N
41°24'N
41°23.5'N
41°23'N
41°22.5'N

123°2.5'W 123°2'W 123°1.5'W 123°1'W 123°0.5'W 123°0'W 122°59.5'W 122°59'W 122°58.5'W 122°58'W 122°57.5'W 122°57'W 122°56.5'W 122°56'W 122°55.5'W 122°55'W 122°54.5'W