

6 Mile NATIONAL

FOREST

Abbott Ranch

Yellow Dog Peak

DIV S

Tile 5

0 0.5 Miles

N

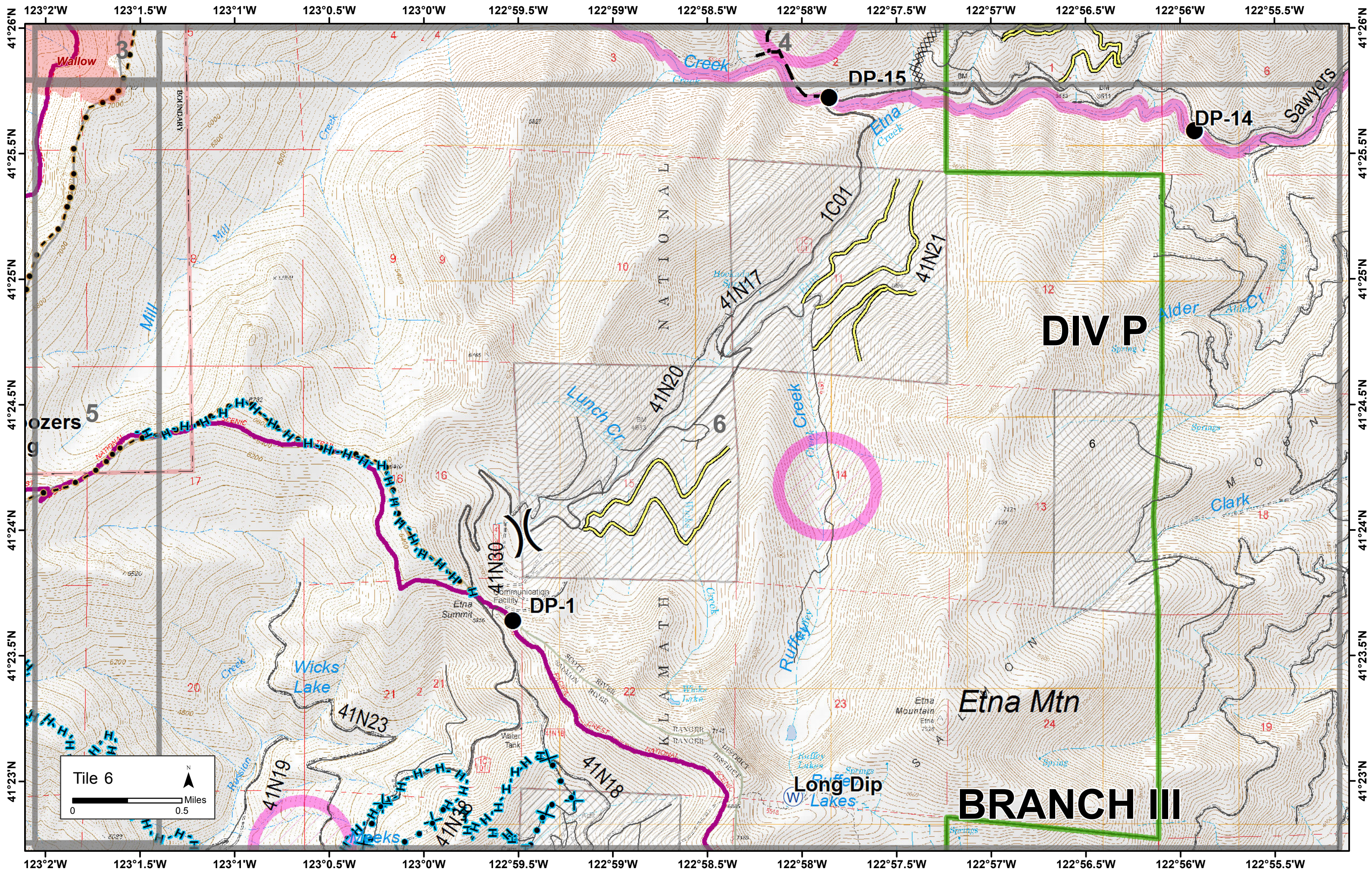
41°26'N  
41°25.5'N  
41°25'N  
41°24.5'N  
41°24'N  
41°23.5'N  
41°23'N

41°26'N  
41°25.5'N  
41°25'N  
41°24.5'N  
41°24'N  
41°23.5'N  
41°23'N

123°8'W 123°7.5'W 123°7'W 123°6.5'W 123°6'W 123°5.5'W 123°5'W 123°4.5'W 123°4'W 123°3.5'W 123°3'W 123°2.5'W 123°2'W 123°1.5'W

123°8'W 123°7.5'W 123°7'W 123°6.5'W 123°6'W 123°5.5'W 123°5'W 123°4.5'W 123°4'W 123°3.5'W 123°3'W 123°2.5'W 123°2'W 123°1.5'W





Tile 6

0 0.5 Miles

N

DIV P

Etna Mtn

BRANCH III

DP-1

DP-15

DP-14

Long Dip Lakes

Wicks Lake

Loggers

Wallow

Sawyers

LAMARTH

Lunch Cr.

Ruffey Cr.

Etna Creek

Creek

Alder

Clark

BOUNDARY

NATIONAL

1C01

41N21

41N17

41N20

41N23

41N19

41N18

41N30

41N36

