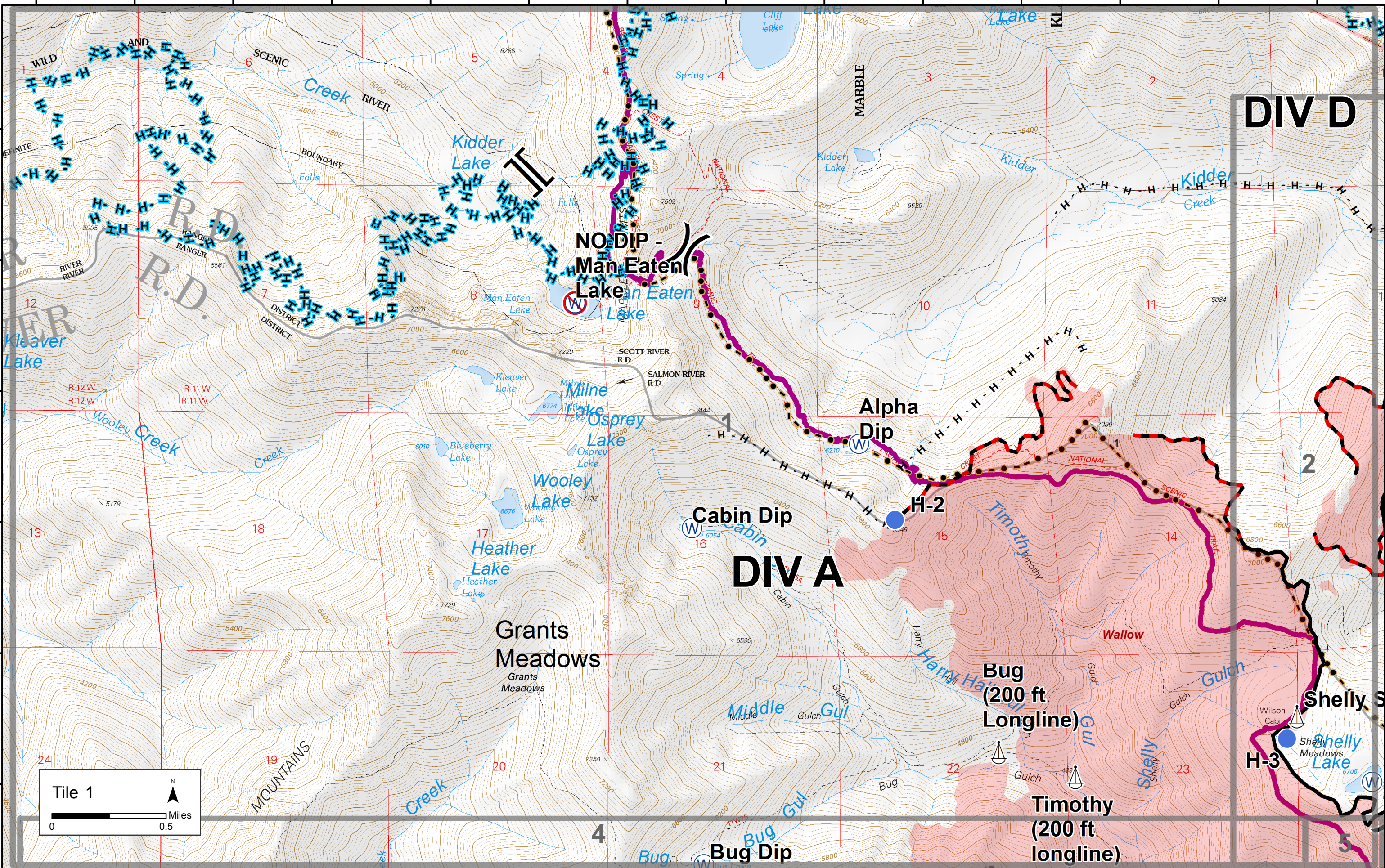


123°10.5'W 123°10'W 123°9.5'W 123°9'W 123°8.5'W 123°8'W 123°7.5'W 123°7'W 123°6.5'W 123°6'W 123°5.5'W 123°5'W 123°4.5'W 123°4'W

41°31'N
41°30.5'N
41°30'N
41°29.5'N
41°29'N
41°28.5'N

41°31'N
41°30.5'N
41°30'N
41°29.5'N
41°29'N
41°28.5'N



DIV D

NO DIP
Man Eaten Lake

Alpha Dip

Cabin Dip

DIV A

Grants Meadows

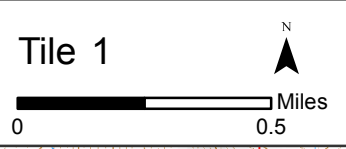
Bug (200 ft Longline)

Timothy (200 ft longline)

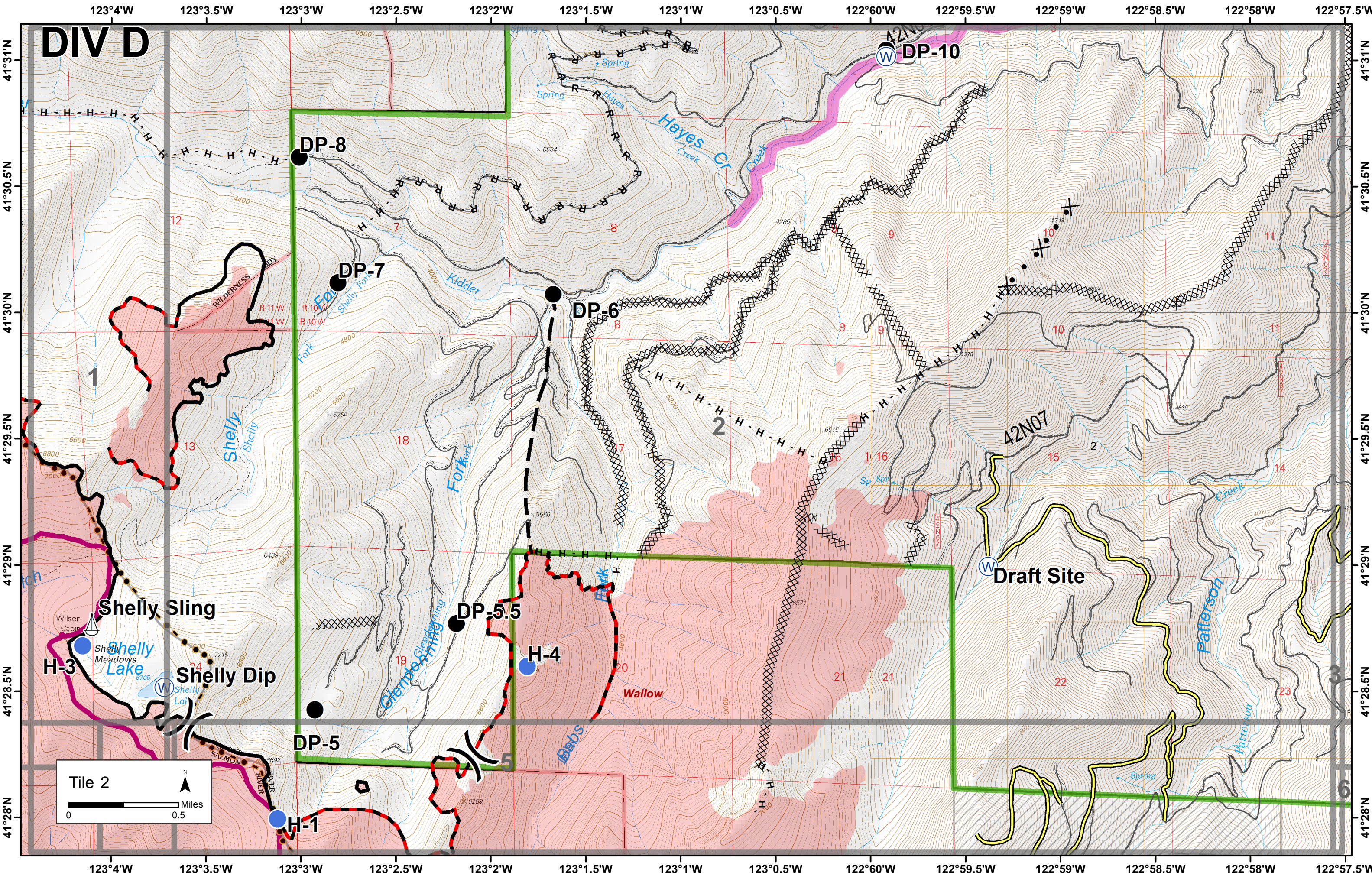
Shelly S

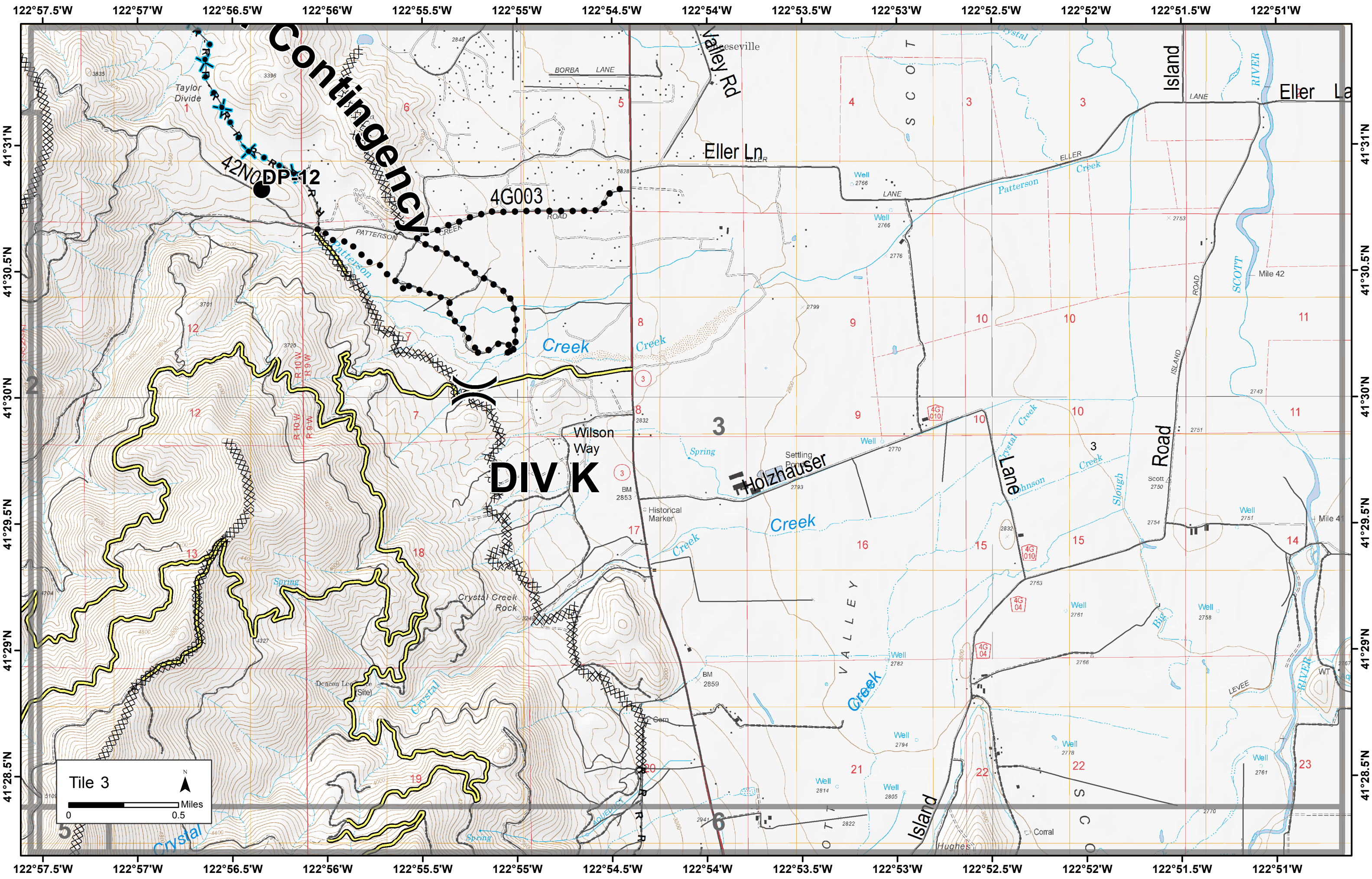
H-3

H-2



123°10.5'W 123°10'W 123°9.5'W 123°9'W 123°8.5'W 123°8'W 123°7.5'W 123°7'W 123°6.5'W 123°6'W 123°5.5'W 123°5'W 123°4.5'W 123°4'W



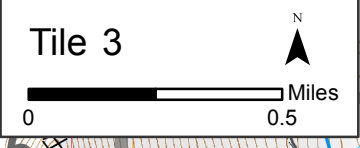


Contingency

DIV K

42N DP 12

4G003

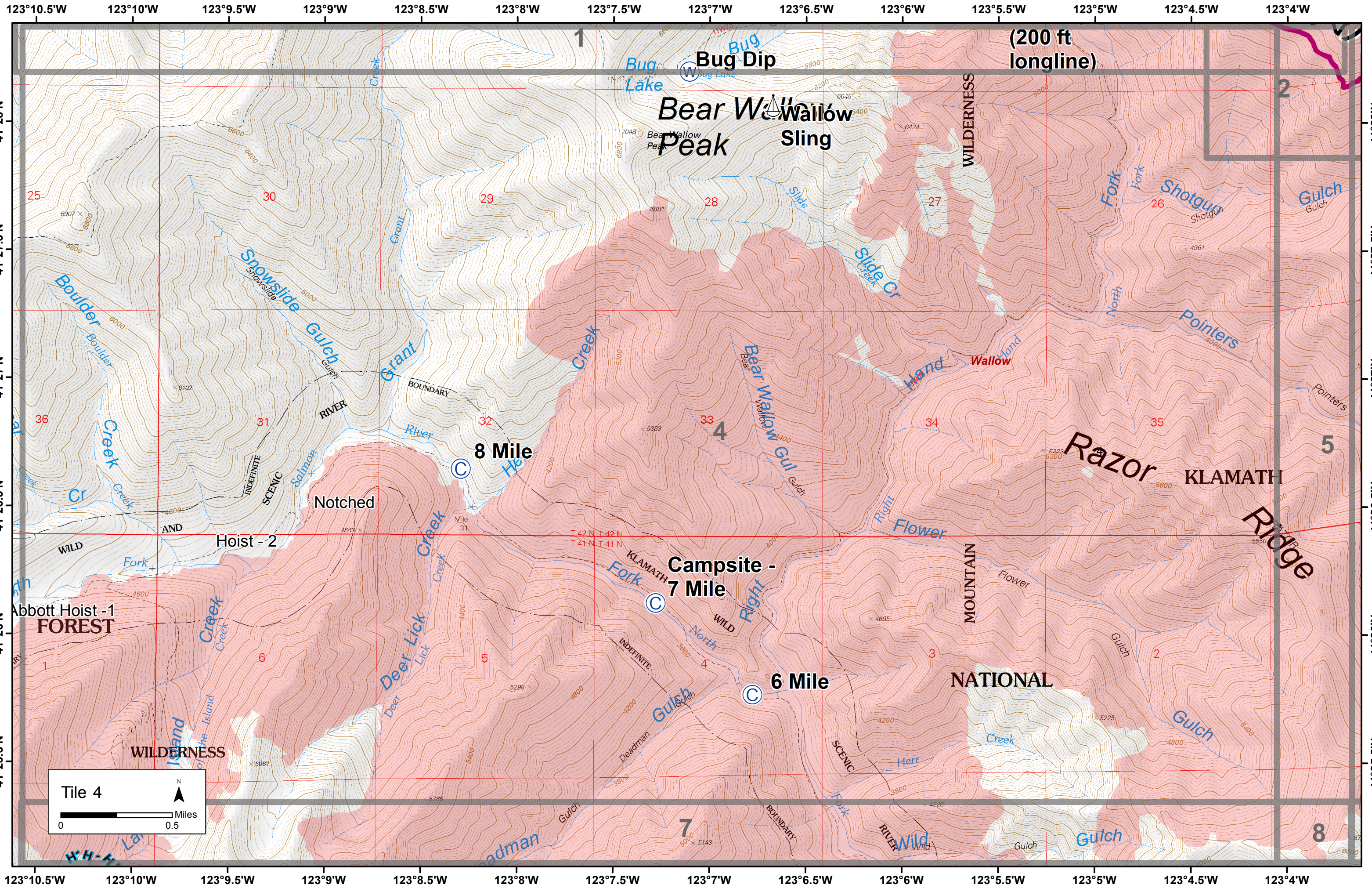


Tile 3



Miles

0 0.5



(200 ft
longline)

Bear Wallow Peak
Wallow Slings

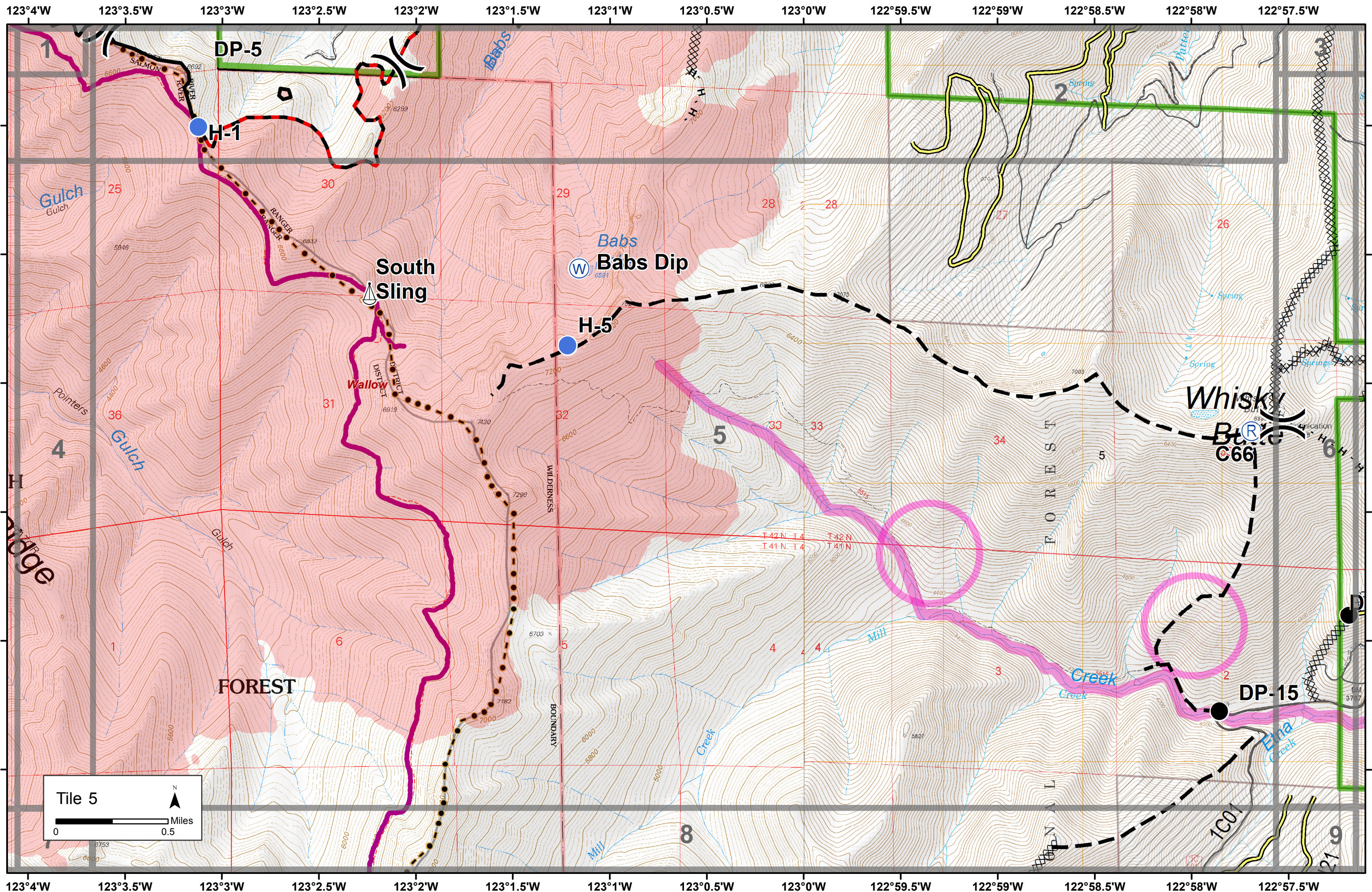
8 Mile

Campsite - 7 Mile

6 Mile

Tile 4

Miles
0 0.5



DP-5

H-1

South Slings

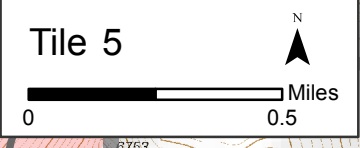
Babs Dip

H-5

Whisky Butte

C66

DP-15



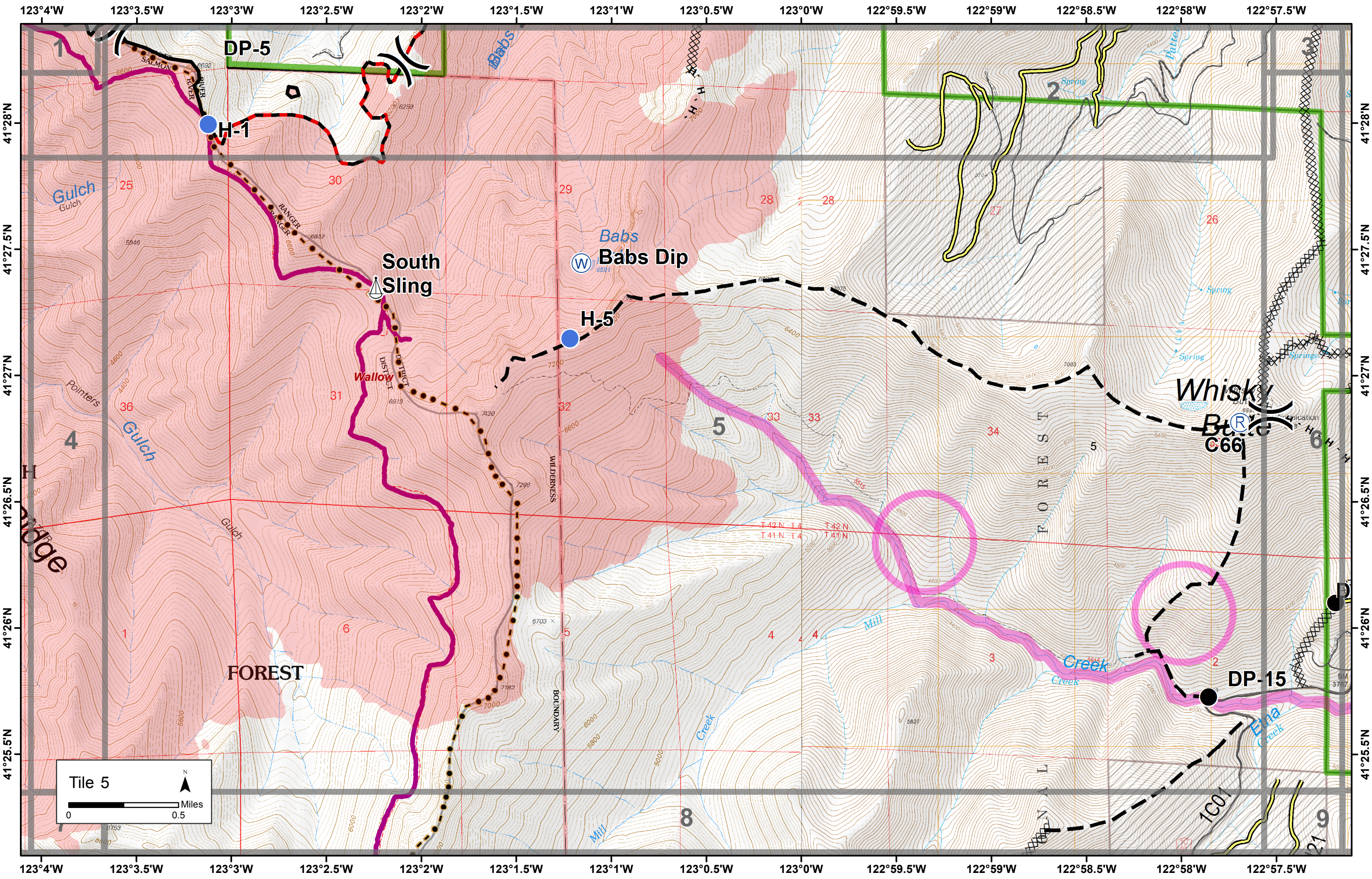
FOREST

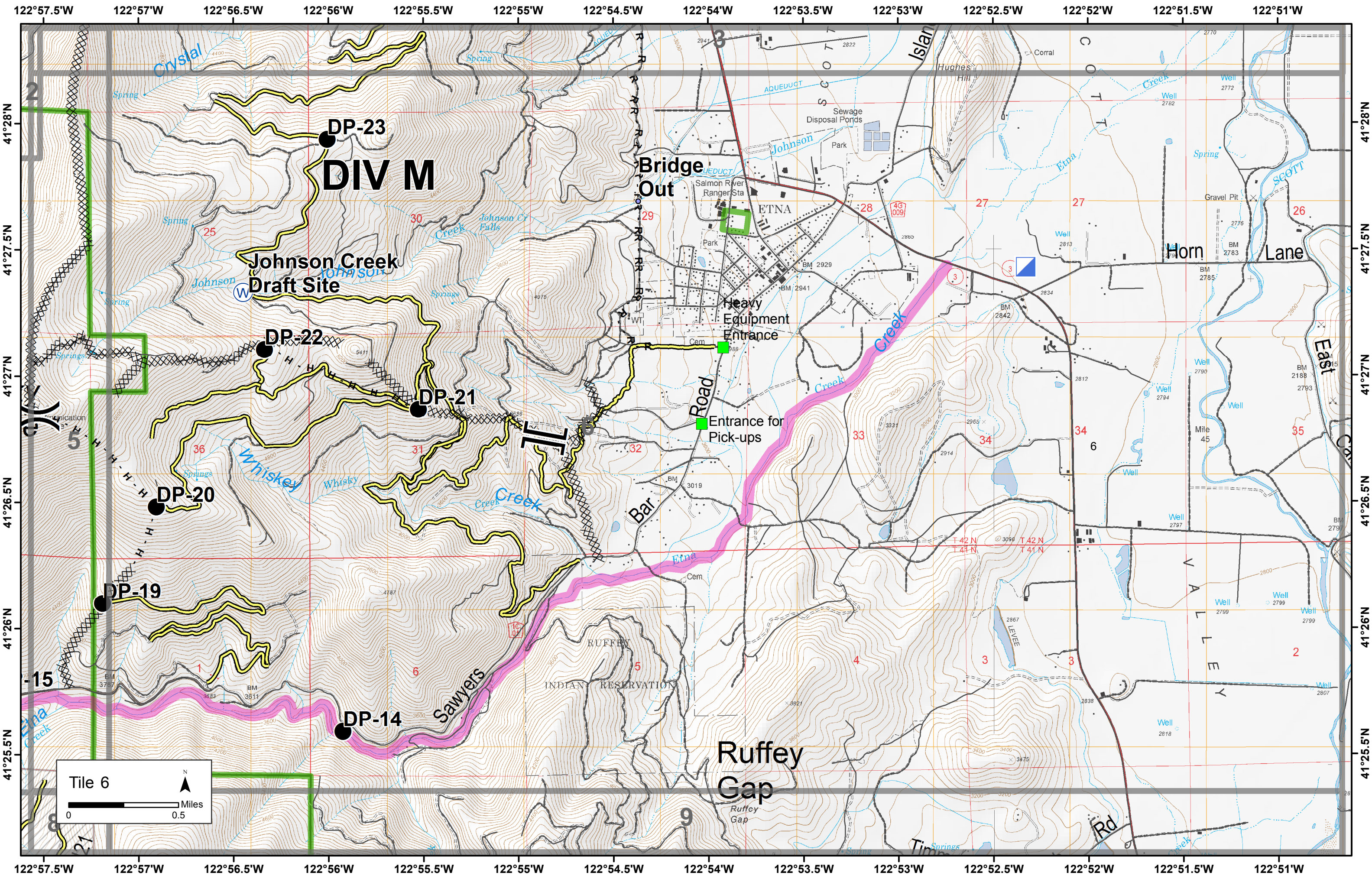
FOREST

FOREST

Wallow District

BOUNDARY





DP-23
DIV M

Johnson Creek
Draft Site

DP-22

DP-21

DP-20

DP-19

DP-14

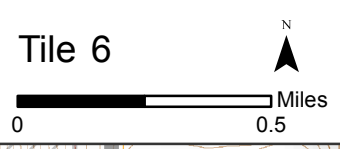
Bridge
Out

ETNA

Heavy
Equipment
Entrance

Entrance for
Pick-ups

Ruffey
Gap



122°57.5'W 122°57'W 122°56.5'W 122°56'W 122°55.5'W 122°55'W 122°54.5'W 122°54'W 122°53.5'W 122°53'W 122°52.5'W 122°52'W 122°51.5'W 122°51'W

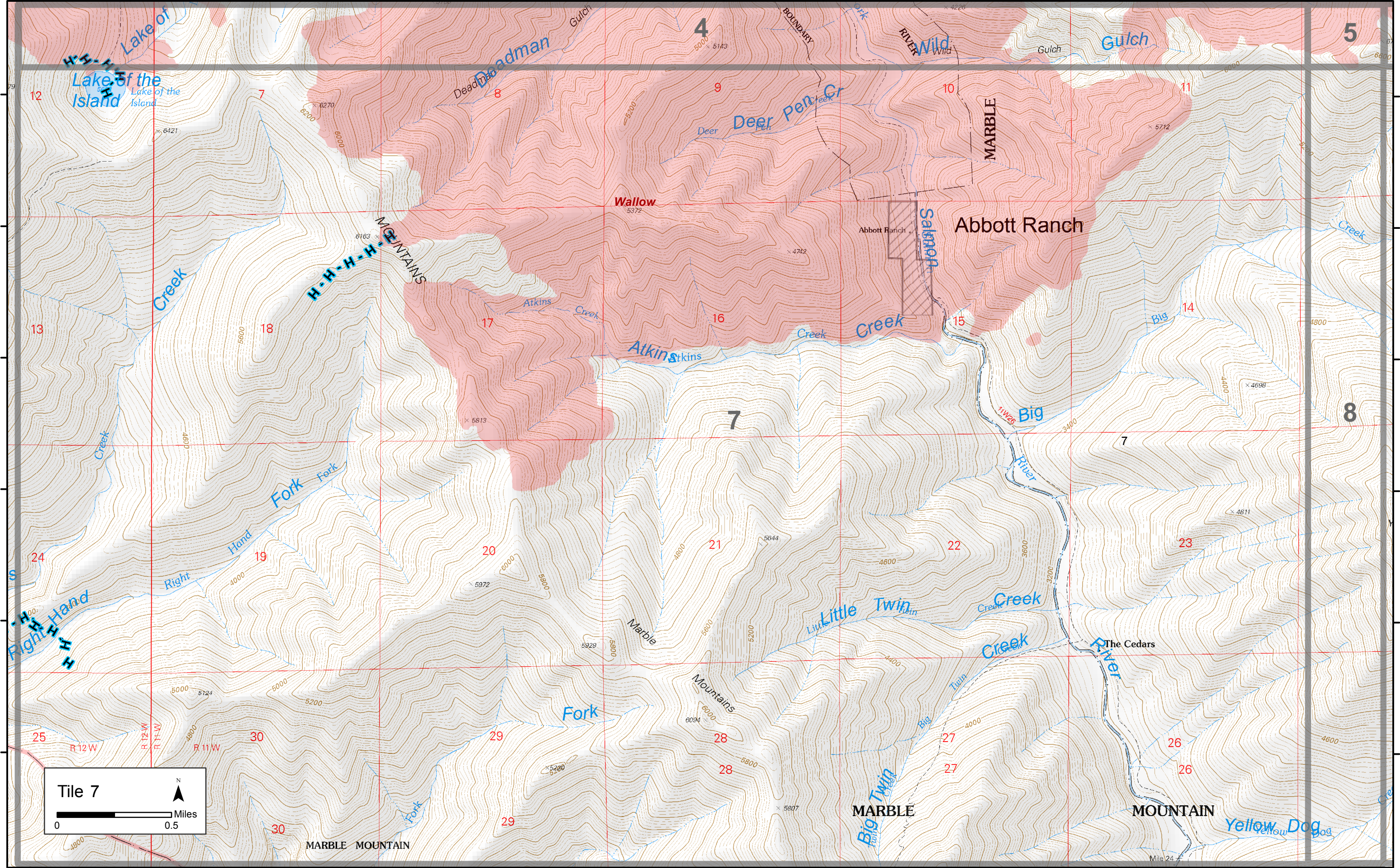
41°28'N
41°27.5'N
41°27'N
41°26.5'N
41°26'N
41°25.5'N

41°28'N
41°27.5'N
41°27'N
41°26.5'N
41°26'N
41°25.5'N

123°10.5'W 123°10'W 123°9.5'W 123°9'W 123°8.5'W 123°8'W 123°7.5'W 123°7'W 123°6.5'W 123°6'W 123°5.5'W 123°5'W 123°4.5'W 123°4'W

41°25'N
41°24.5'N
41°24'N
41°23.5'N
41°23'N
41°22.5'N

41°25'N
41°24.5'N
41°24'N
41°23.5'N
41°23'N
41°22.5'N



Tile 7

North arrow pointing up (N).

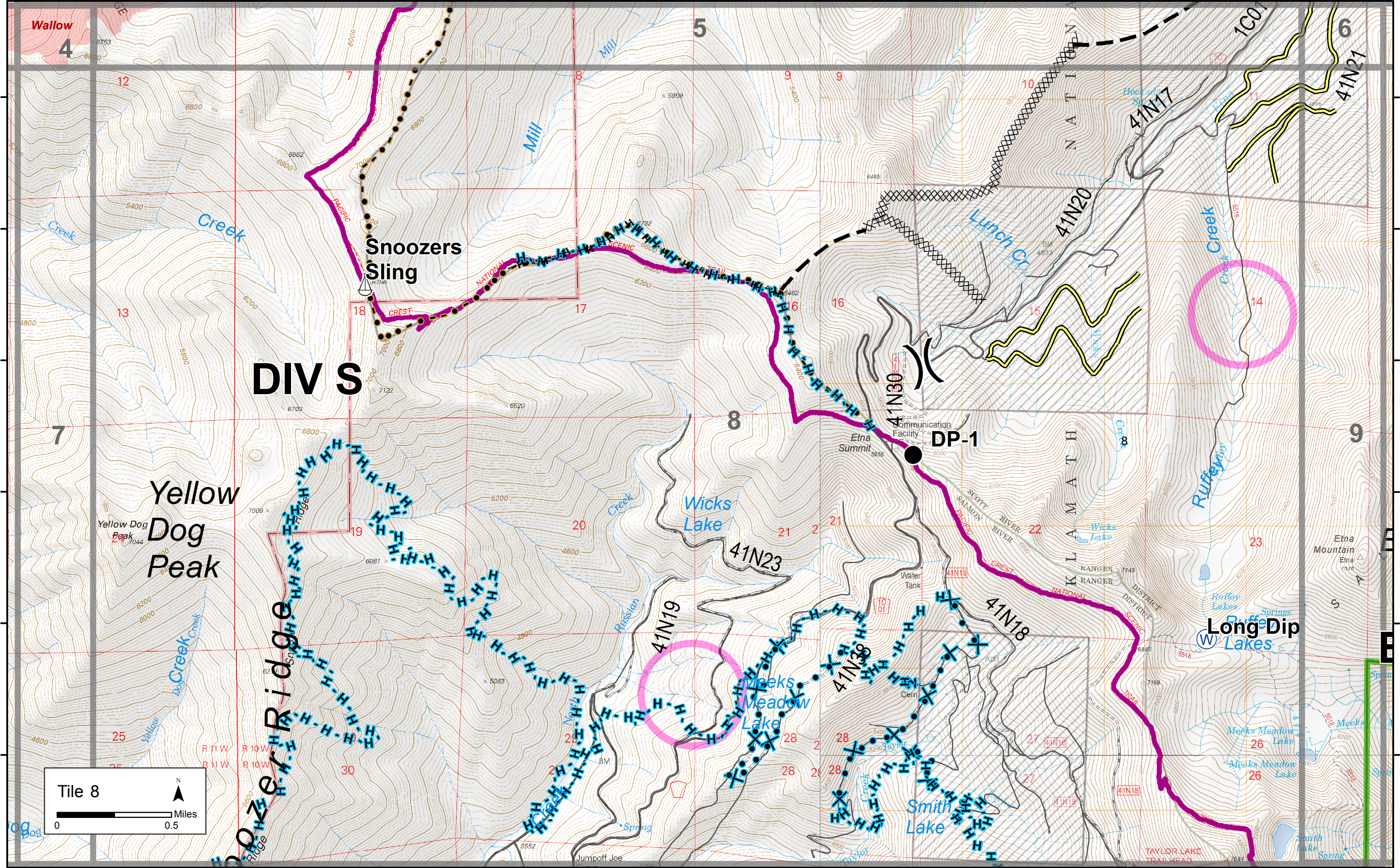
Scale bar: 0 to 0.5 Miles.

123°10.5'W 123°10'W 123°9.5'W 123°9'W 123°8.5'W 123°8'W 123°7.5'W 123°7'W 123°6.5'W 123°6'W 123°5.5'W 123°5'W 123°4.5'W 123°4'W

123°4'W 123°3.5'W 123°3'W 123°2.5'W 123°2'W 123°1.5'W 123°1'W 123°0.5'W 123°0'W 122°59.5'W 122°59'W 122°58.5'W 122°58'W 122°57.5'W

41°25'N
41°24.5'N
41°24'N
41°23.5'N
41°23'N
41°22.5'N

41°25'N
41°24.5'N
41°24'N
41°23.5'N
41°23'N
41°22.5'N



Wallow
4

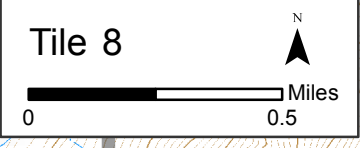
Snoozers
Sling

DIV S

Yellow
Dog
Peak

DP-1

Long Dip
Lakes



123°4'W 123°3.5'W 123°3'W 123°2.5'W 123°2'W 123°1.5'W 123°1'W 123°0.5'W 123°0'W 122°59.5'W 122°59'W 122°58.5'W 122°58'W 122°57.5'W

122°57.5'W 122°57'W 122°56.5'W 122°56'W 122°55.5'W 122°55'W 122°54.5'W 122°54'W 122°53.5'W 122°53'W 122°52.5'W 122°52'W 122°51.5'W 122°51'W

41°25'N

41°24.5'N

41°24'N

41°23.5'N

41°23'N

41°22.5'N

41°25'N

41°24.5'N

41°24'N

41°23.5'N

41°23'N

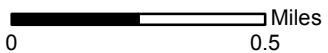
41°22.5'N

DIV P

BRANCH III

Etna Mtn

Tile 9



0 0.5 Miles

