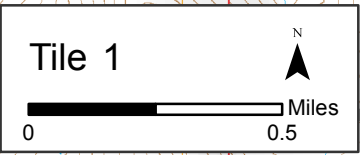
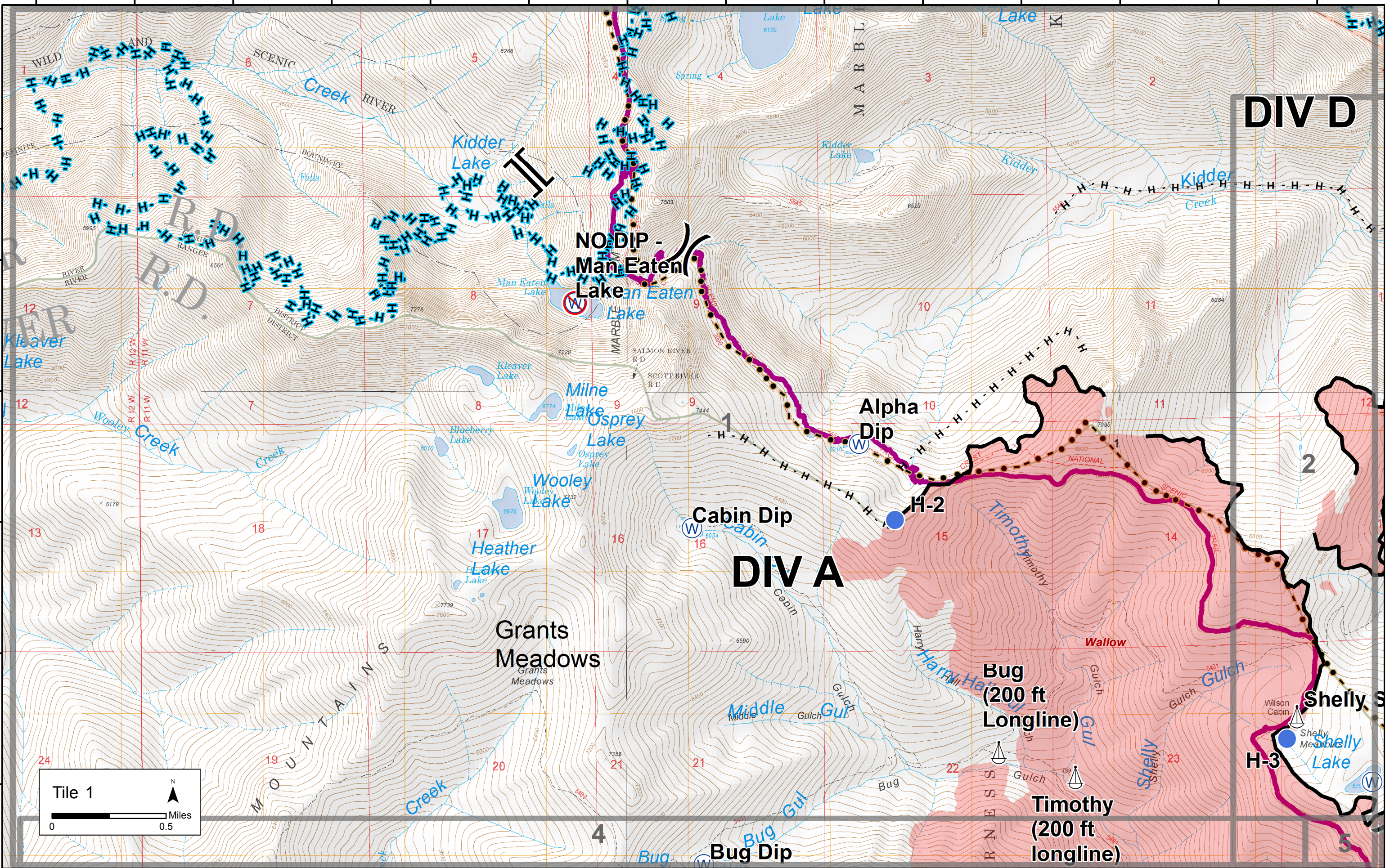


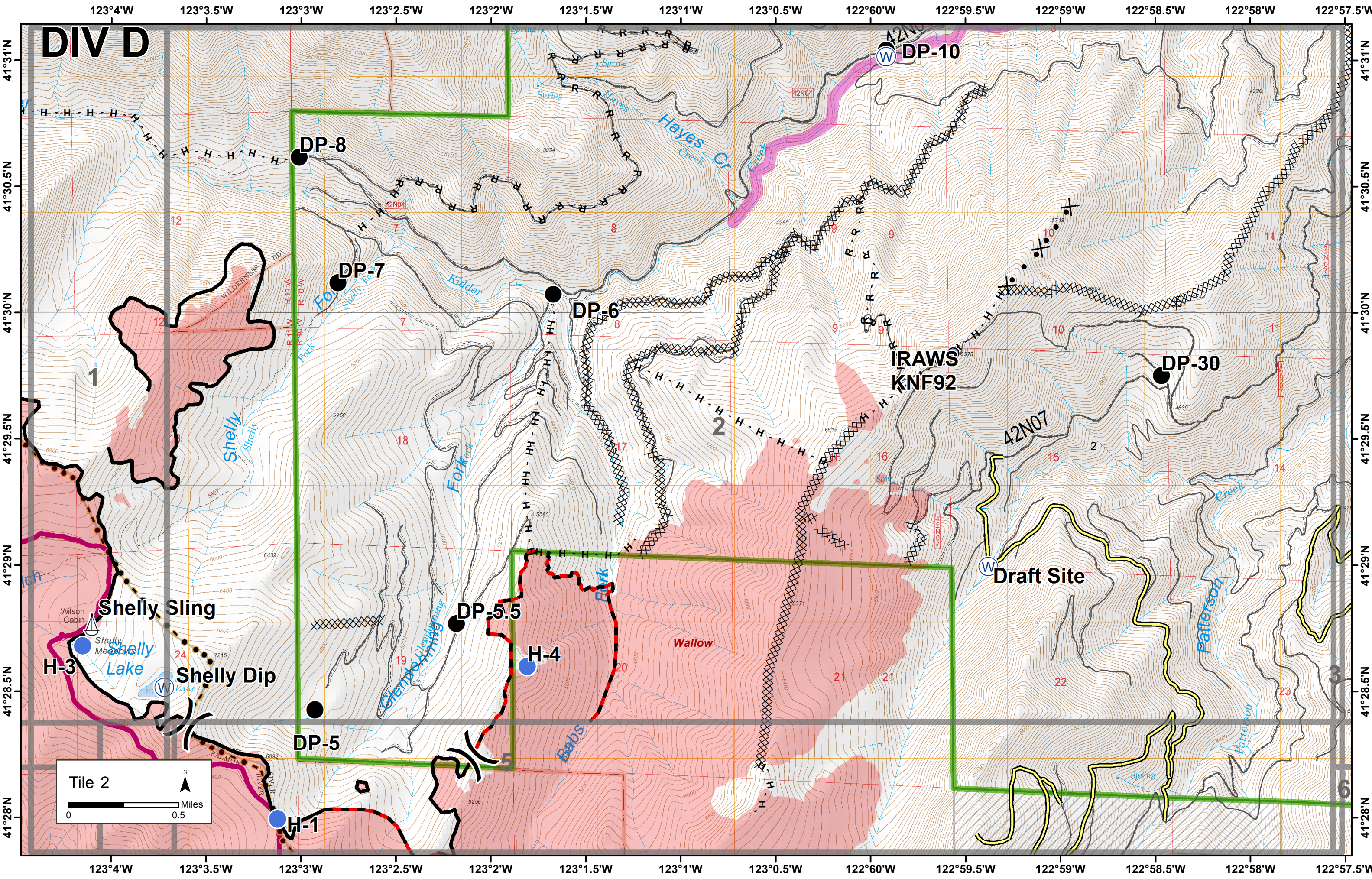
123°10.5'W 123°10'W 123°9.5'W 123°9'W 123°8.5'W 123°8'W 123°7.5'W 123°7'W 123°6.5'W 123°6'W 123°5.5'W 123°5'W 123°4.5'W 123°4'W

41°31'N
41°30.5'N
41°30'N
41°29.5'N
41°29'N
41°28.5'N

41°31'N
41°30.5'N
41°30'N
41°29.5'N
41°29'N
41°28.5'N



123°10.5'W 123°10'W 123°9.5'W 123°9'W 123°8.5'W 123°8'W 123°7.5'W 123°7'W 123°6.5'W 123°6'W 123°5.5'W 123°5'W 123°4.5'W 123°4'W



DIV D

DP-10

DP-8

DP-7

DP-6

**IRAWS
KNF92**

DP-30

Draft Site

Shelly Sling

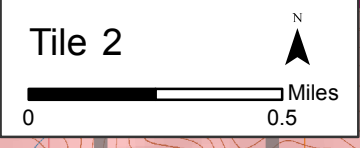
DP-5.5

H-4

Shelly Dip

DP-5

H-1

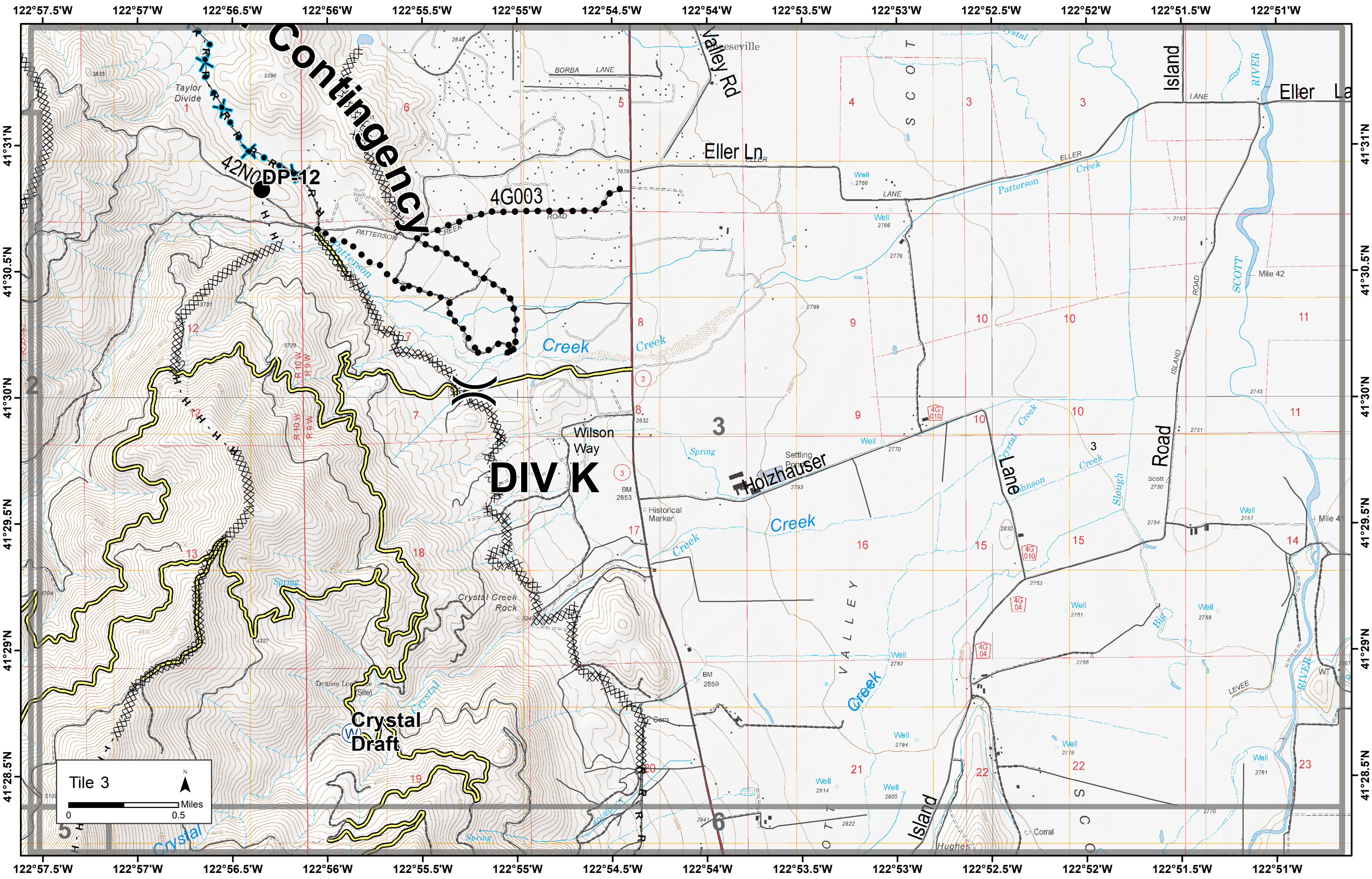


123°4'W 123°3.5'W 123°3'W 123°2.5'W 123°2'W 123°1.5'W 123°1'W 123°0.5'W 122°60'W 122°59.5'W 122°59'W 122°58.5'W 122°58'W 122°57.5'W

41°31'N
41°30.5'N
41°30'N
41°29.5'N
41°29'N
41°28.5'N
41°28'N

41°31'N
41°30.5'N
41°30'N
41°29.5'N
41°29'N
41°28.5'N
41°28'N

123°4'W 123°3.5'W 123°3'W 123°2.5'W 123°2'W 123°1.5'W 123°1'W 123°0.5'W 122°60'W 122°59.5'W 122°59'W 122°58.5'W 122°58'W 122°57.5'W



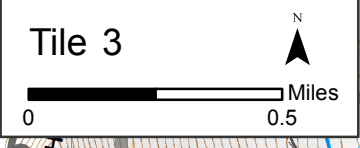
Contingency

DIV K

Crystal Draft

42N0DP-12

4G003

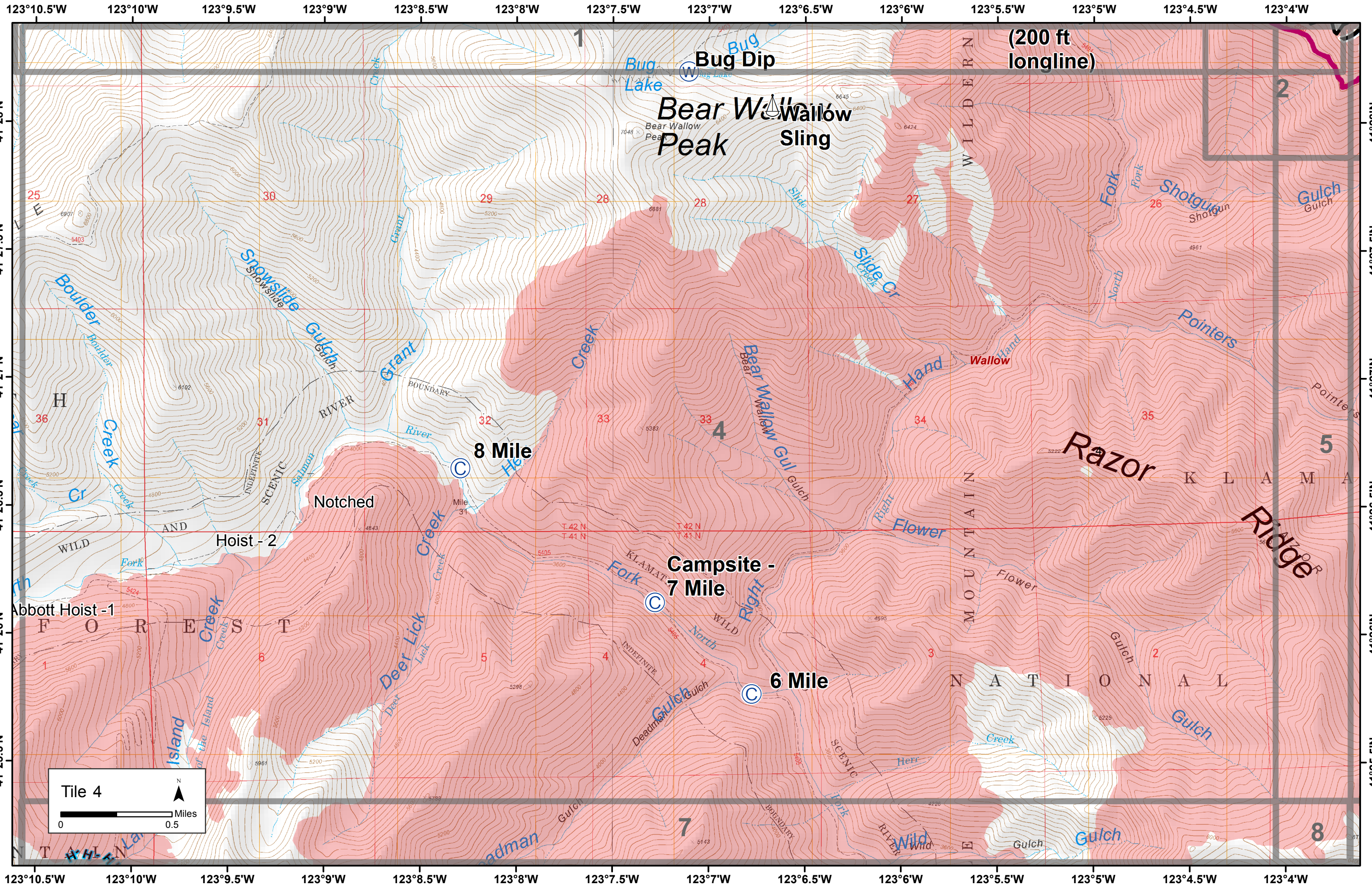


122°57.5'W 122°57'W 122°56.5'W 122°56'W 122°55.5'W 122°55'W 122°54.5'W 122°54'W 122°53.5'W 122°53'W 122°52.5'W 122°52'W 122°51.5'W 122°51'W

41°31'N
41°30.5'N
41°30'N
41°29.5'N
41°29'N
41°28.5'N

41°31'N
41°30.5'N
41°30'N
41°29.5'N
41°29'N
41°28.5'N

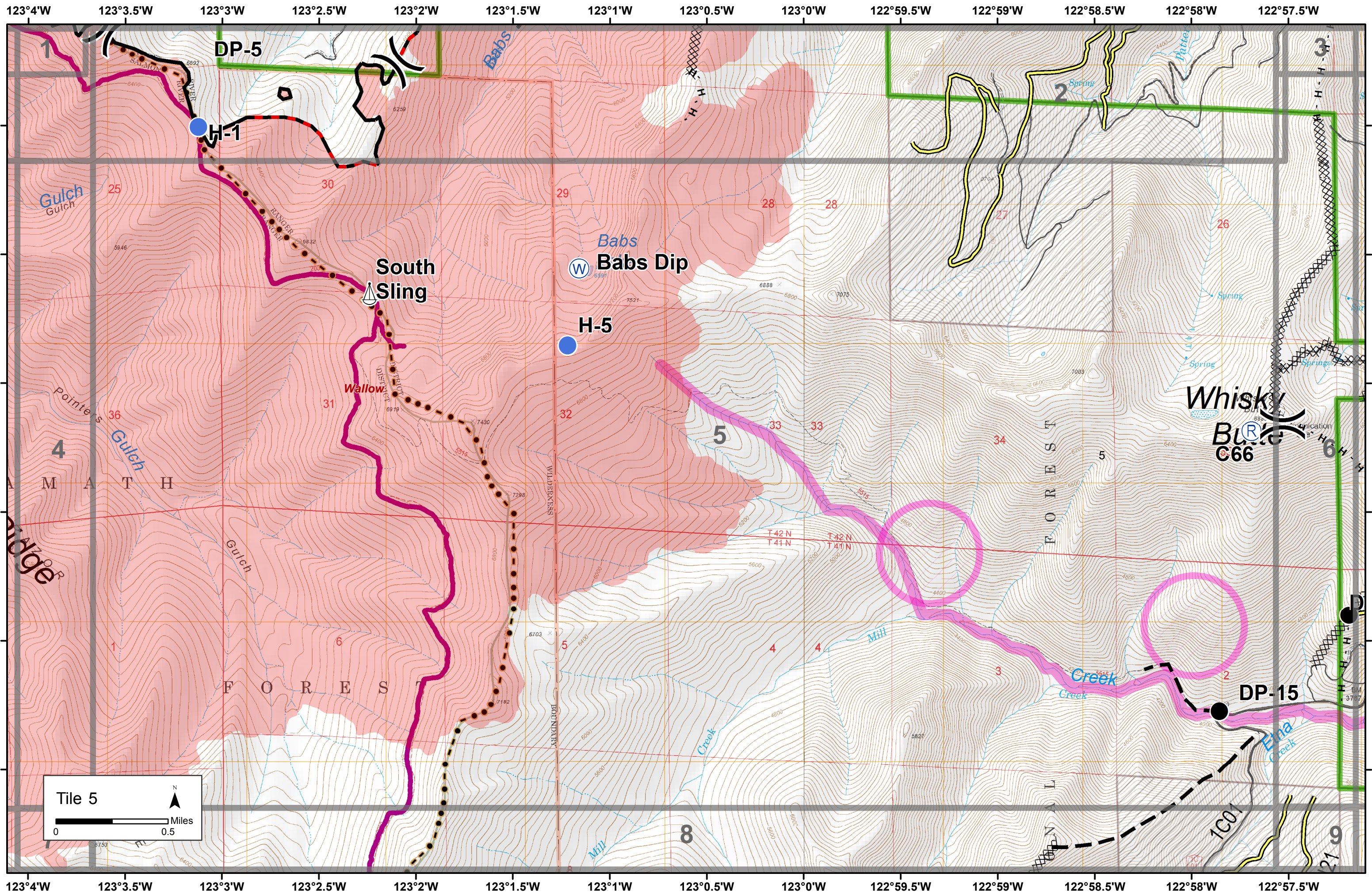
122°57.5'W 122°57'W 122°56.5'W 122°56'W 122°55.5'W 122°55'W 122°54.5'W 122°54'W 122°53.5'W 122°53'W 122°52.5'W 122°52'W 122°51.5'W 122°51'W



Tile 4

Miles

0 0.5



DP-5

H-1

2

3

South Slings

H-5

Babs Babs Dip

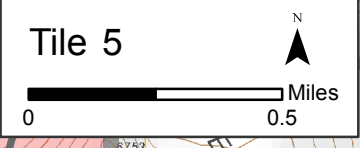
Whisky Bluffs C66

MATH

FOREST

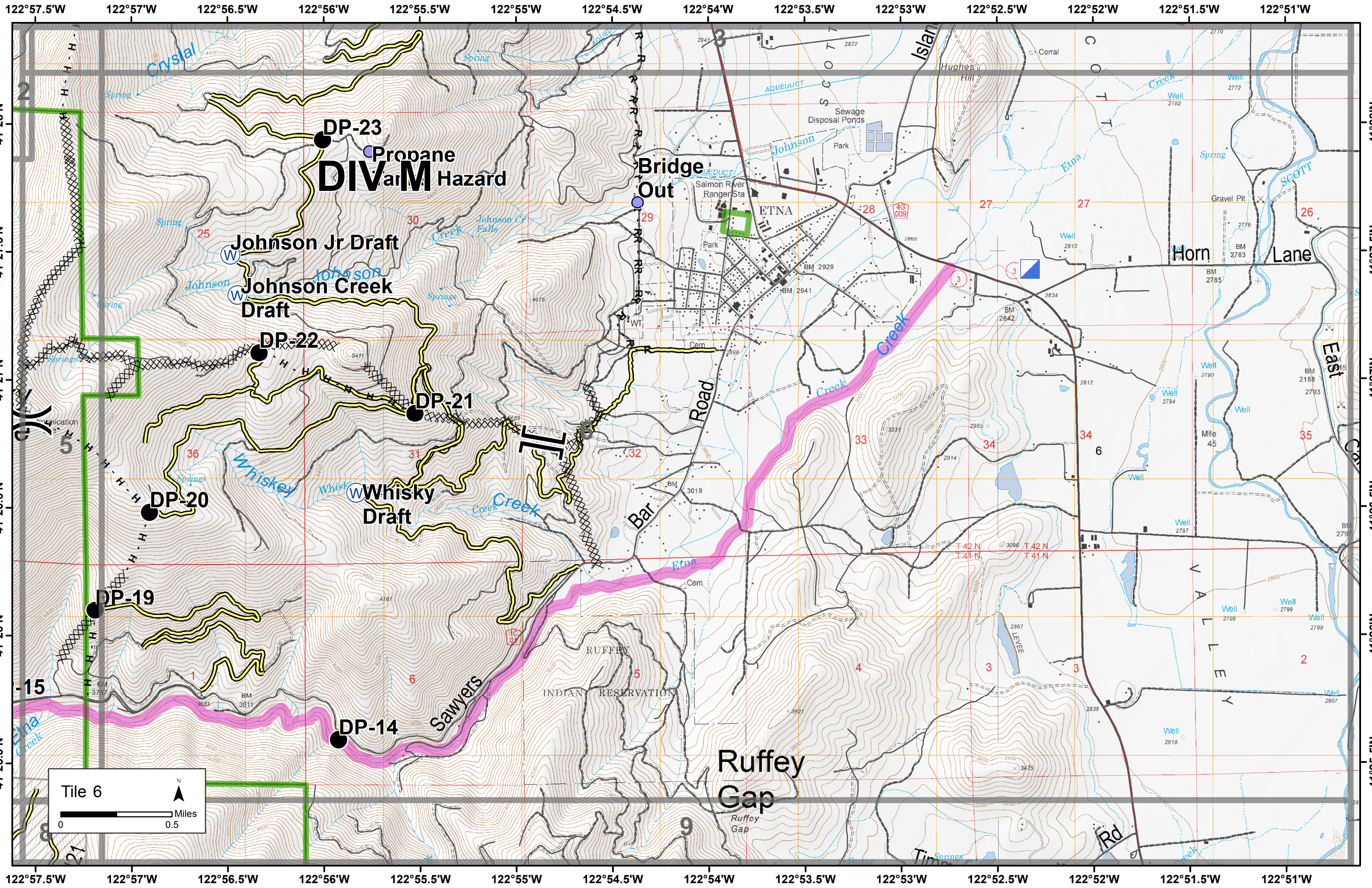
FOREST

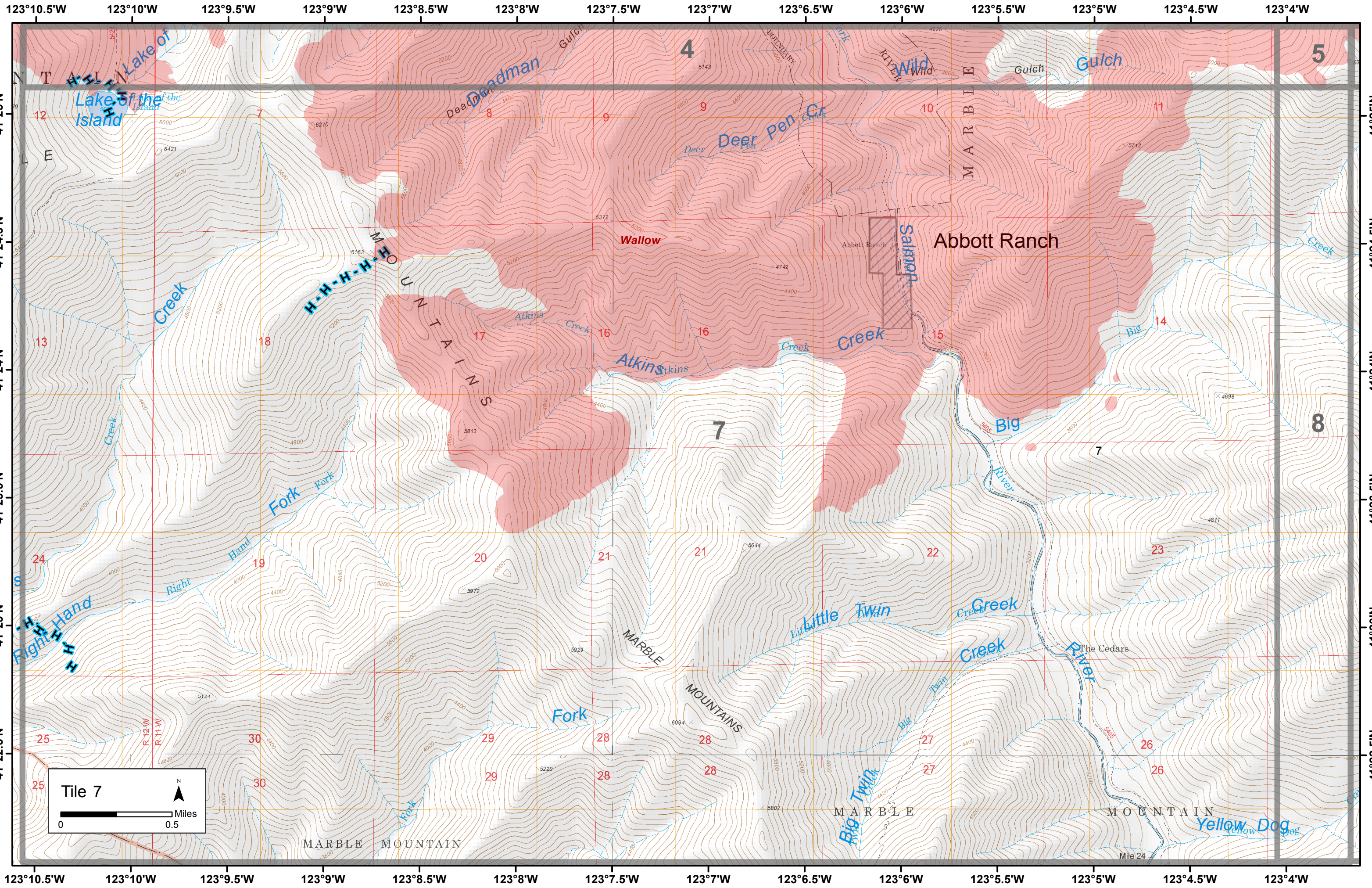
DP-15



8

219





Tile 7

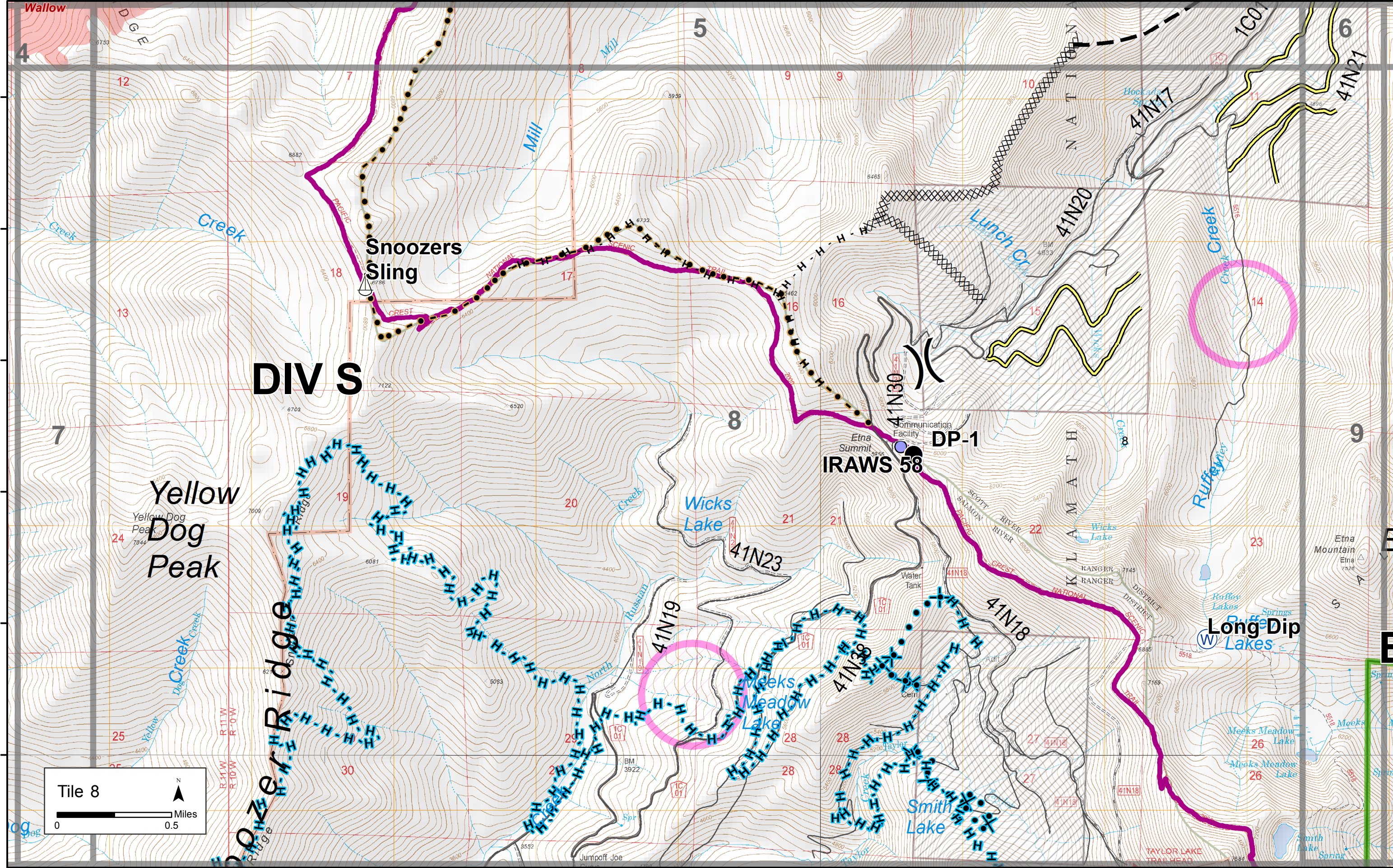
0 0.5 Miles

N

123°4'W 123°3.5'W 123°3'W 123°2.5'W 123°2'W 123°1.5'W 123°1'W 123°0.5'W 123°0'W 122°59.5'W 122°59'W 122°58.5'W 122°58'W 122°57.5'W

41°25'N
41°24.5'N
41°24'N
41°23.5'N
41°23'N
41°22.5'N

41°25'N
41°24.5'N
41°24'N
41°23.5'N
41°23'N
41°22.5'N



DIV S

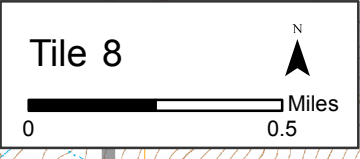
Yellow Dog Peak

Snoozers Sling

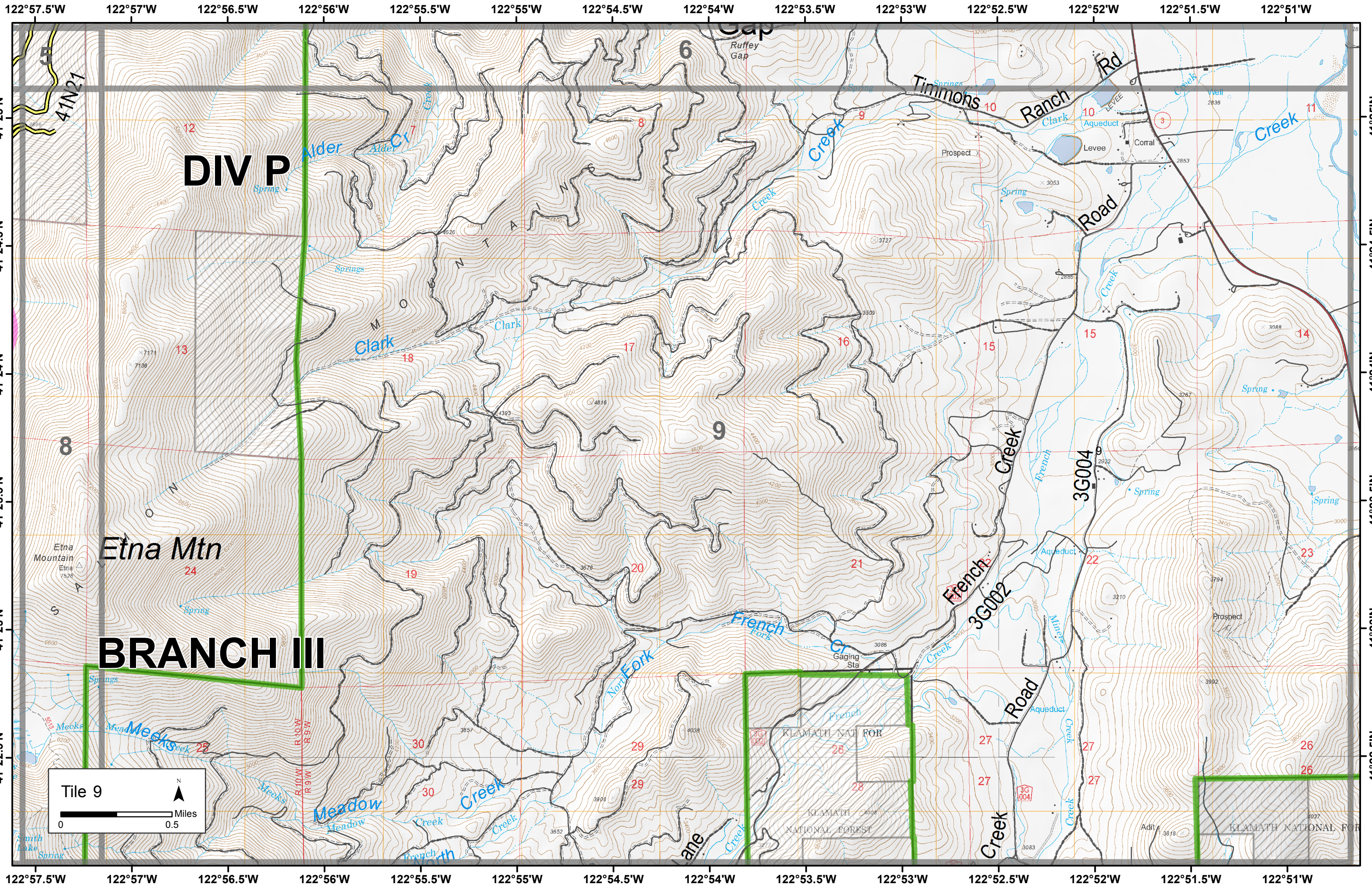
IRAWS 58

DP-1

Long Dip Lakes



123°4'W 123°3.5'W 123°3'W 123°2.5'W 123°2'W 123°1.5'W 123°1'W 123°0.5'W 123°0'W 122°59.5'W 122°59'W 122°58.5'W 122°58'W 122°57.5'W



DIV P

BRANCH III

Tile 9

0 0.5 Miles

N