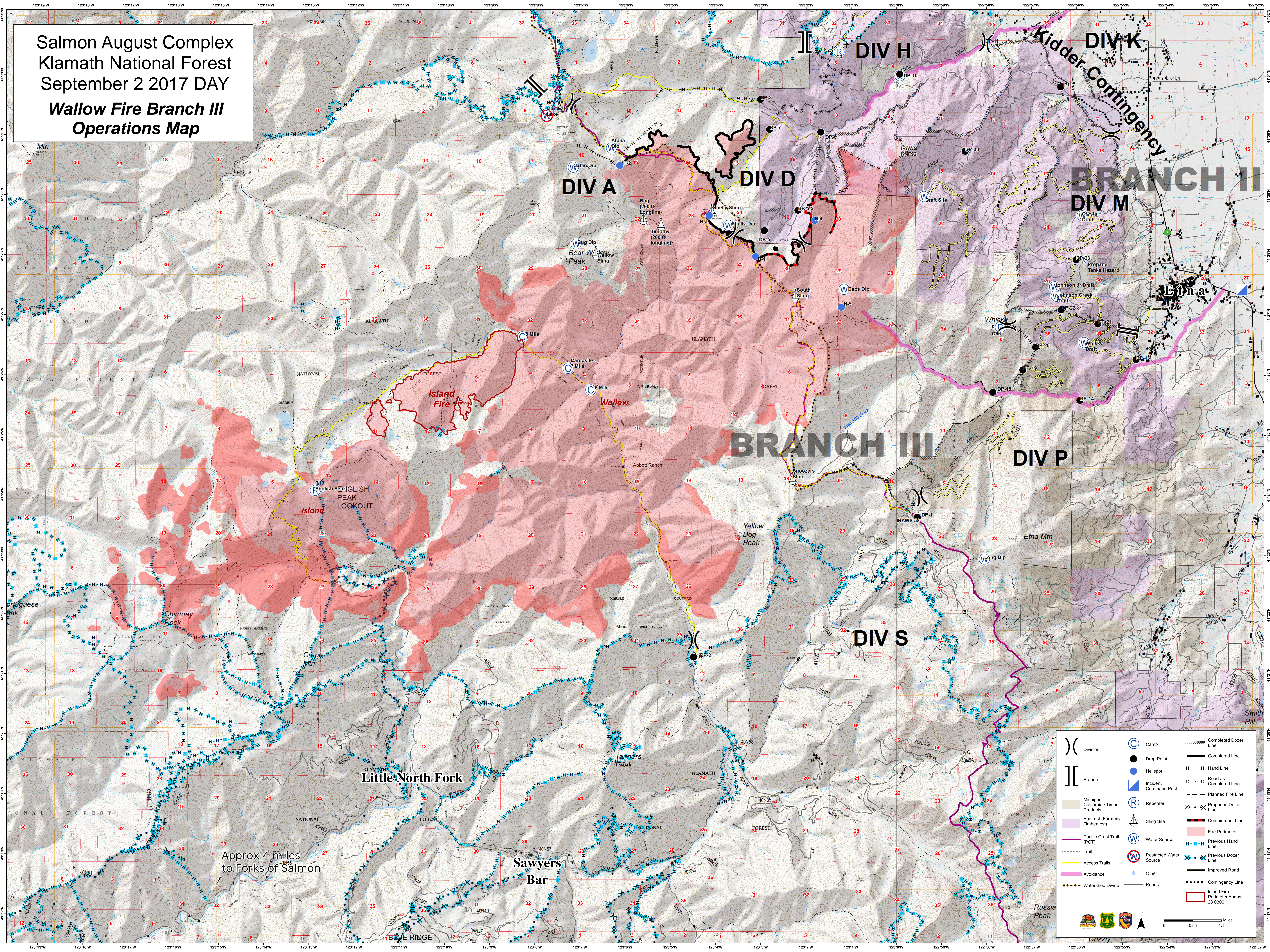


Salmon August Complex  
 Klamath National Forest  
 September 2 2017 DAY  
**Wallow Fire Branch III  
 Operations Map**



Approx 4 miles  
 to Forks of Salmon

|  |                                       |  |                         |  |                                      |
|--|---------------------------------------|--|-------------------------|--|--------------------------------------|
|  | Division                              |  | Camp                    |  | Completed Dozer Line                 |
|  | Branch                                |  | Drop Point              |  | Completed Line                       |
|  | Michigan California / Timber Products |  | Helispot                |  | Hand Line                            |
|  | Ecotrust (Formerly Timberwest)        |  | Incident Command Post   |  | Road as Completed Line               |
|  | Pacific Crest Trail (PCT)             |  | Repeater                |  | Planned Fire Line                    |
|  | Access Trails                         |  | Sling Site              |  | Proposed Dozer Line                  |
|  | Avoidance                             |  | Water Source            |  | Containment Line                     |
|  | Watershed Divide                      |  | Restricted Water Source |  | Fire Penimeter                       |
|  |                                       |  | Other                   |  | Previous Hand Line                   |
|  |                                       |  |                         |  | Previous Dozer Line                  |
|  |                                       |  |                         |  | Improved Road                        |
|  |                                       |  |                         |  | Contingency Line                     |
|  |                                       |  |                         |  | Island Fire Perimeter August 28 0306 |