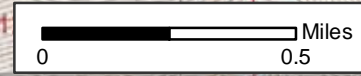


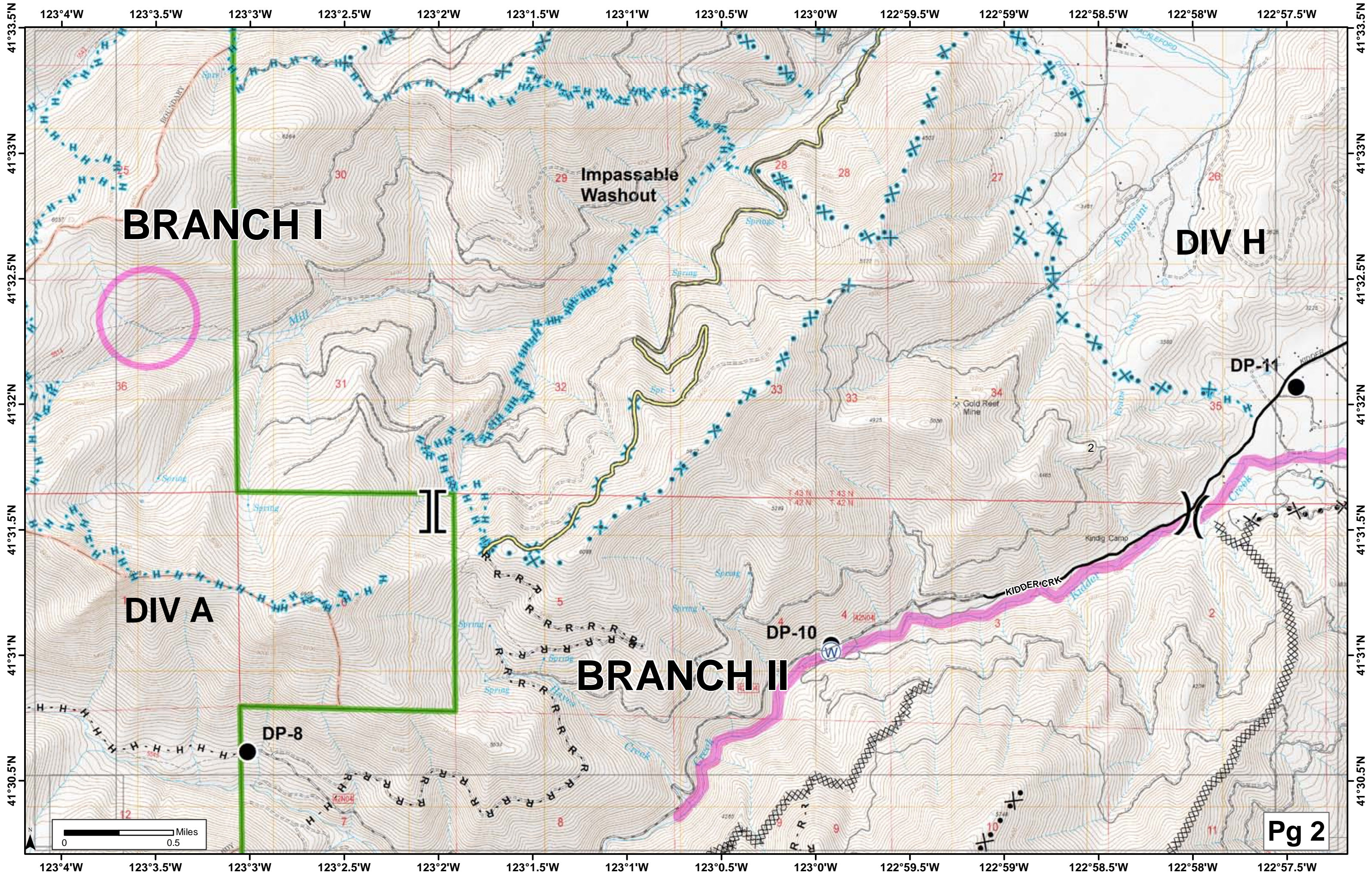
BRANCH I

DIV A



NO DIP - Man Eaten

Pg 1



BRANCH I

DIV H

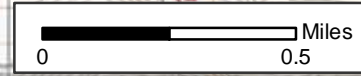
DP-11

DIV A

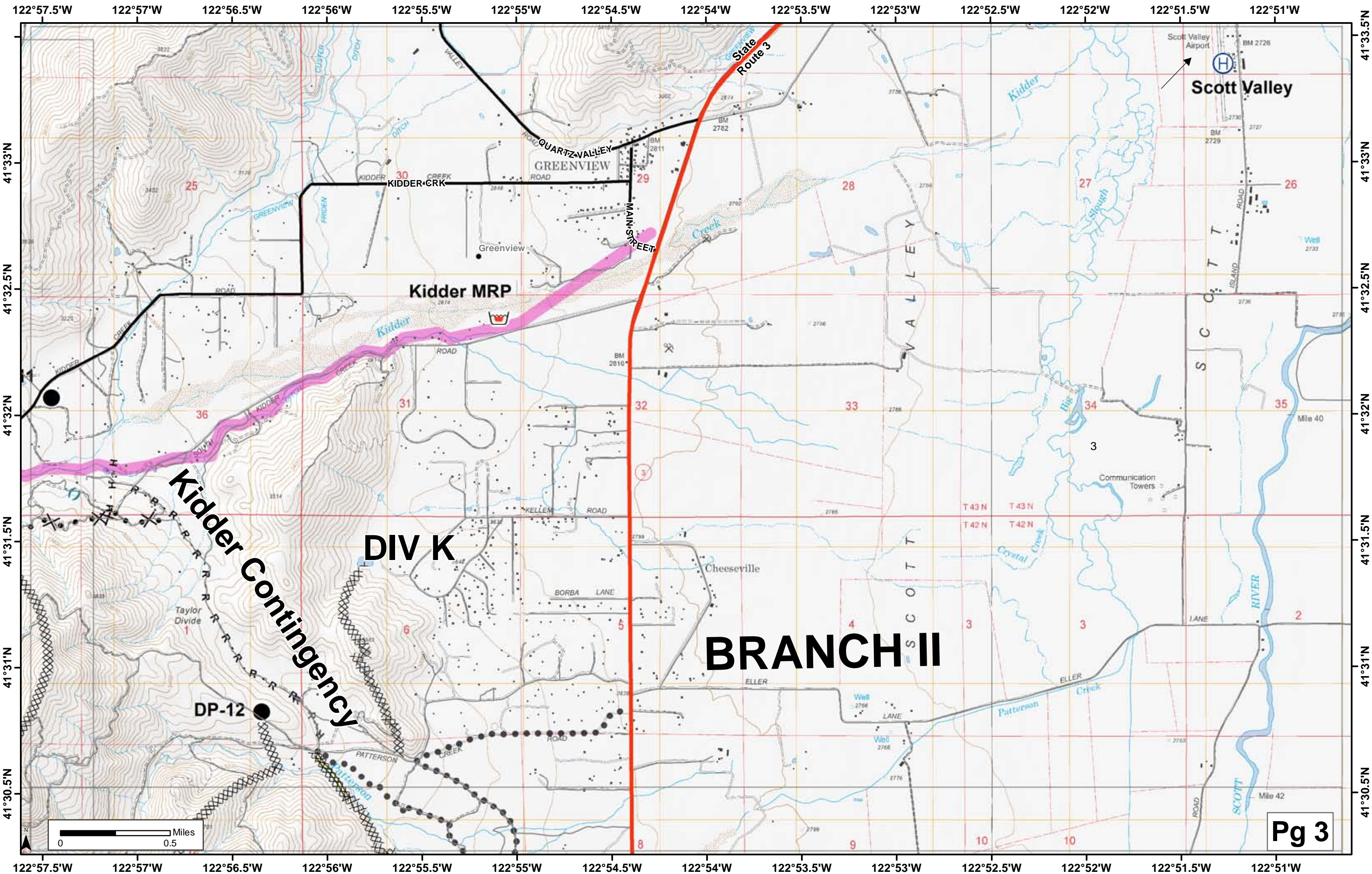
BRANCH II

DP-10

DP-8



Pg 2



Scott Valley Airport

Scott Valley

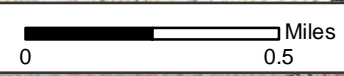
Kidder MRP

Kidder Contingency

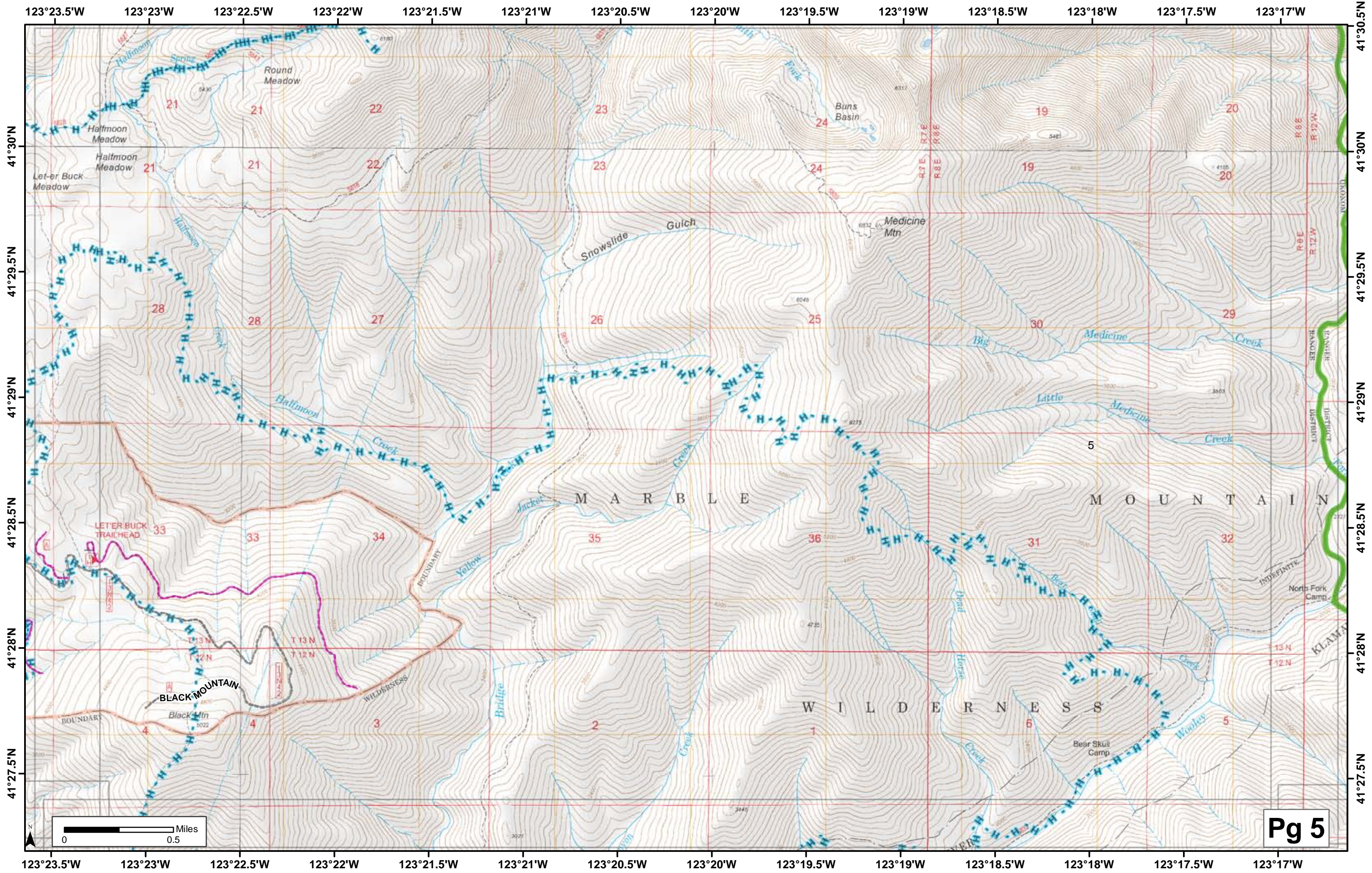
DIV K

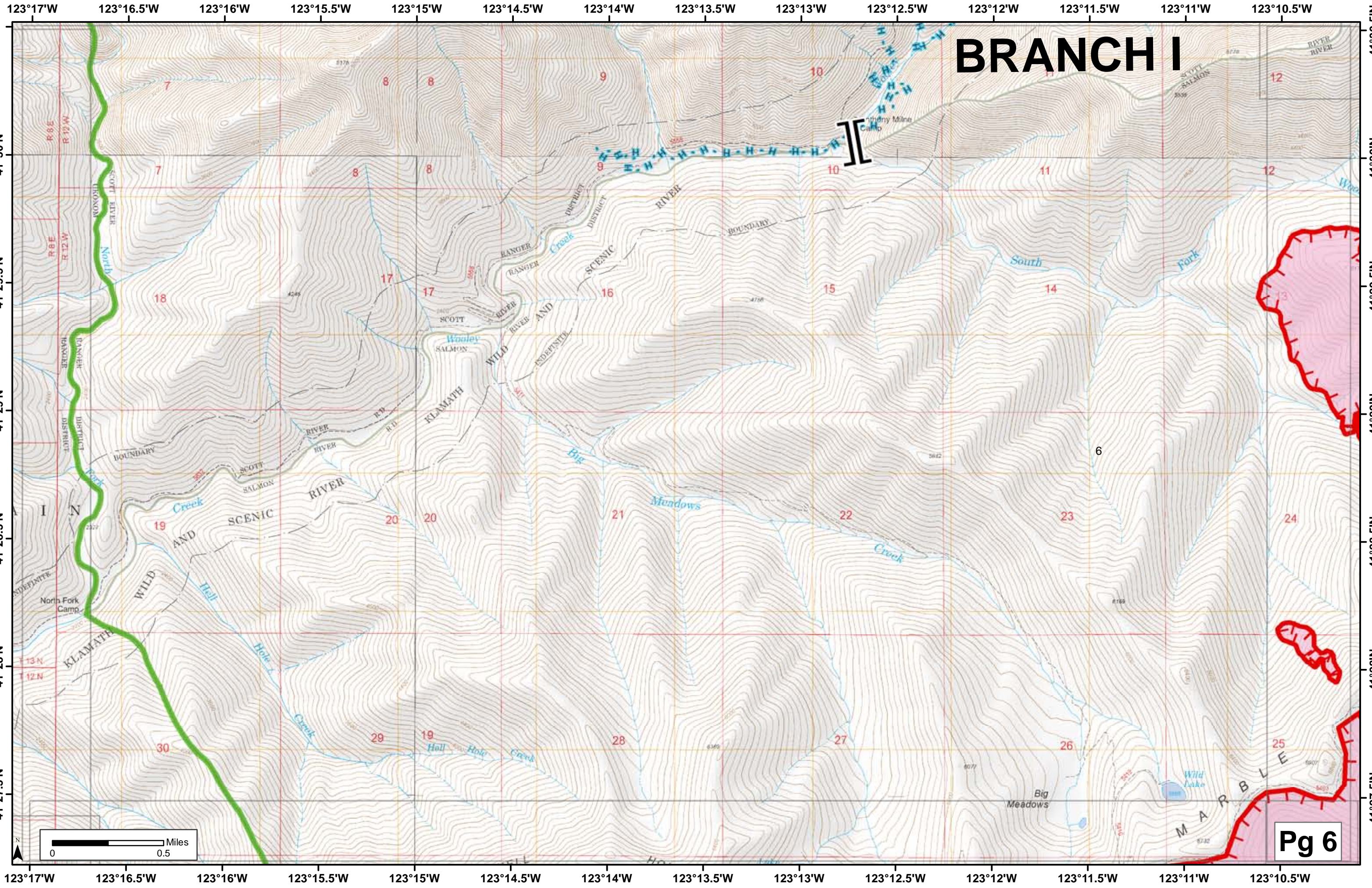
BRANCH II

DP-12

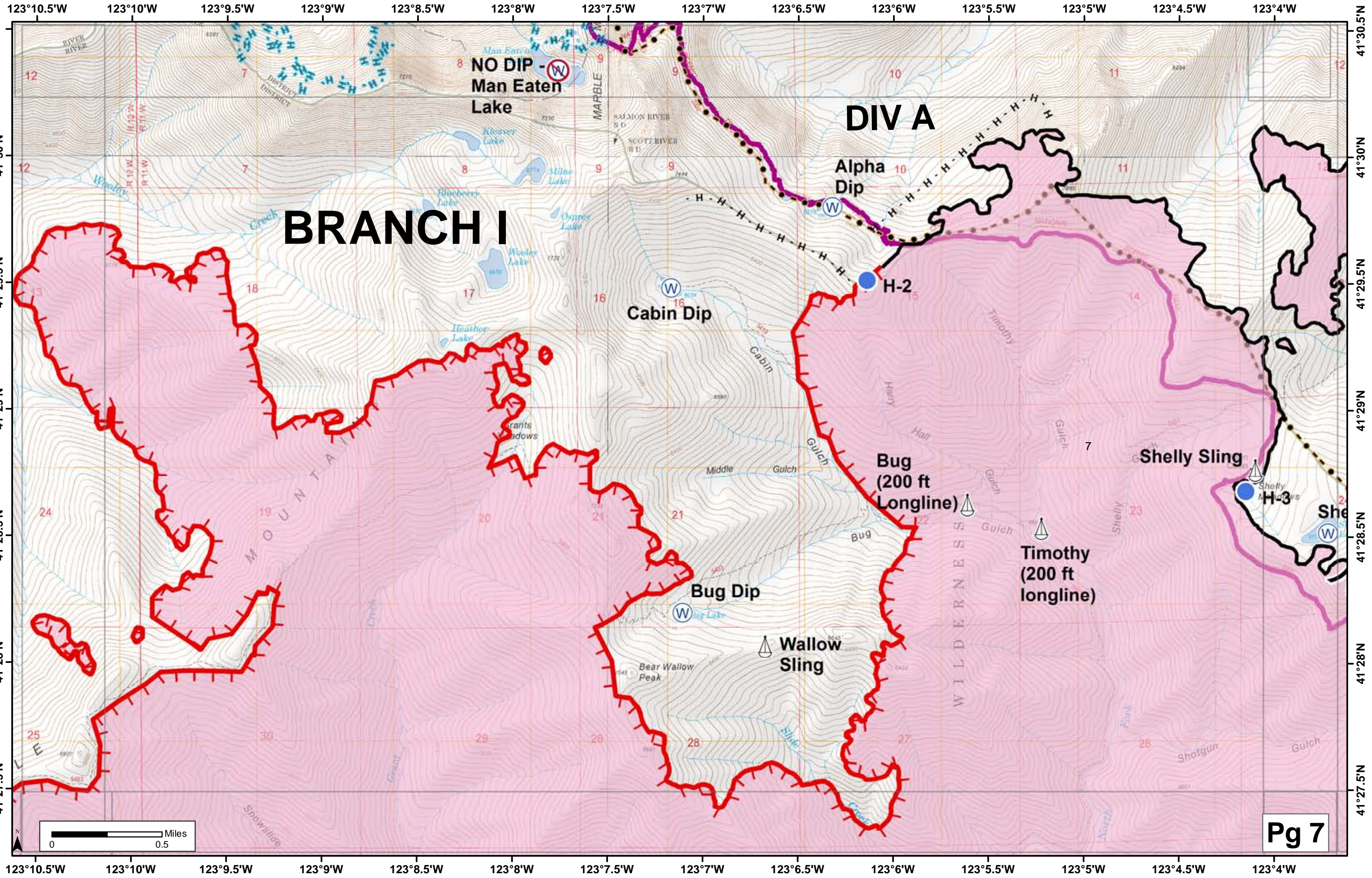


Pg 3





BRANCH I



123°10.5'W 123°10'W 123°9.5'W 123°9'W 123°8.5'W 123°8'W 123°7.5'W 123°7'W 123°6.5'W 123°6'W 123°5.5'W 123°5'W 123°4.5'W 123°4'W

41°30.5'N
41°30'N
41°29.5'N
41°29'N
41°28.5'N
41°28'N
41°27.5'N

41°30.5'N
41°30'N
41°29.5'N
41°29'N
41°28.5'N
41°28'N
41°27.5'N

BRANCH I

DIV A

**NO DIP -
Man Eaten
Lake**

**Alpha
Dip**

Cabin Dip

H-2

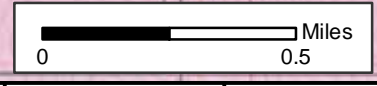
**Bug
(200 ft
Longline)**

Shelly Sling

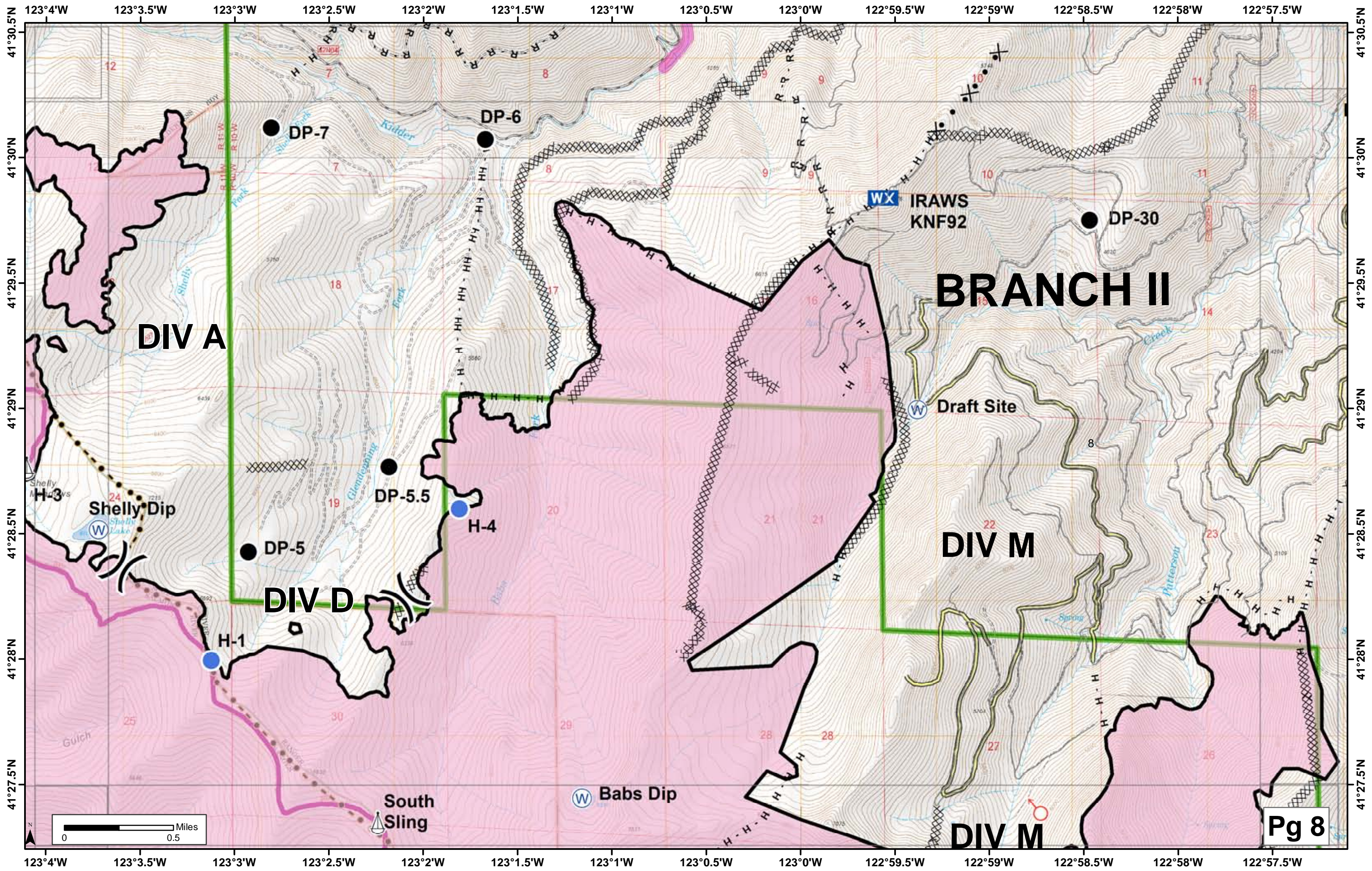
Bug Dip

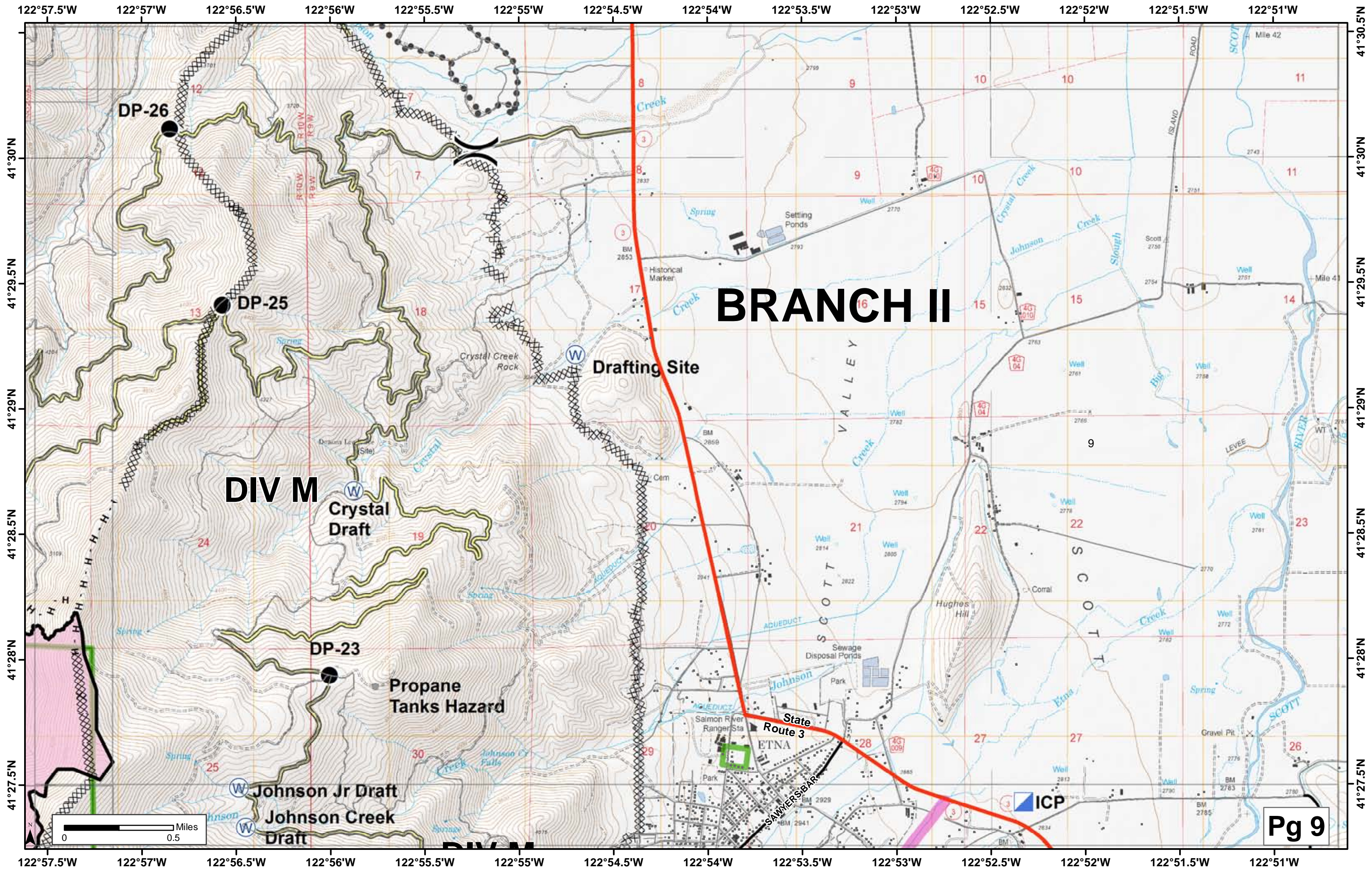
**Timothy
(200 ft
longline)**

**Wallow
Sling**



Pg 7





BRANCH II

DIV M

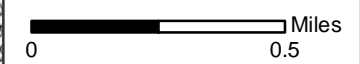
Drafting Site

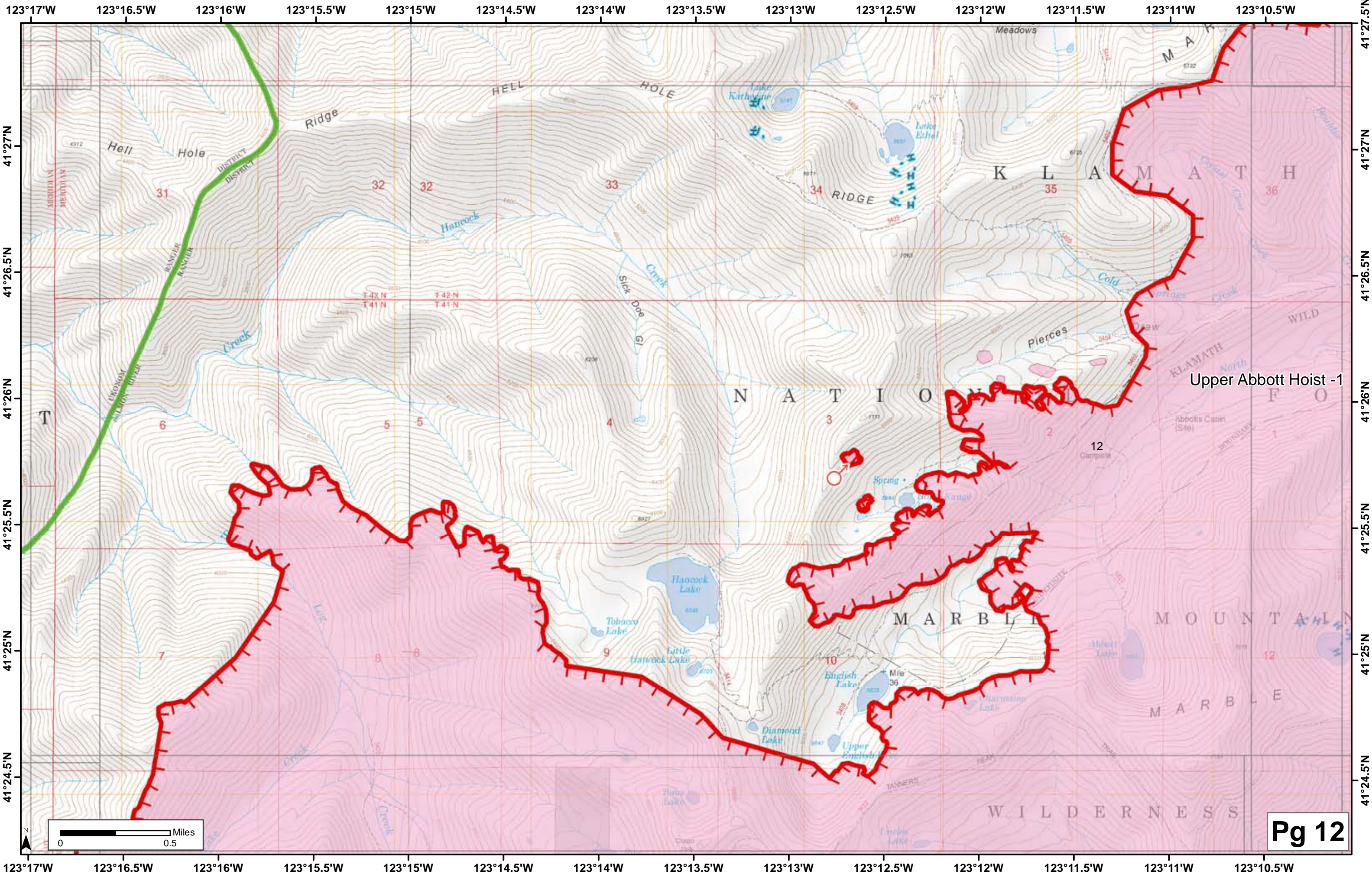
Crystal Draft

Propane Tanks Hazard

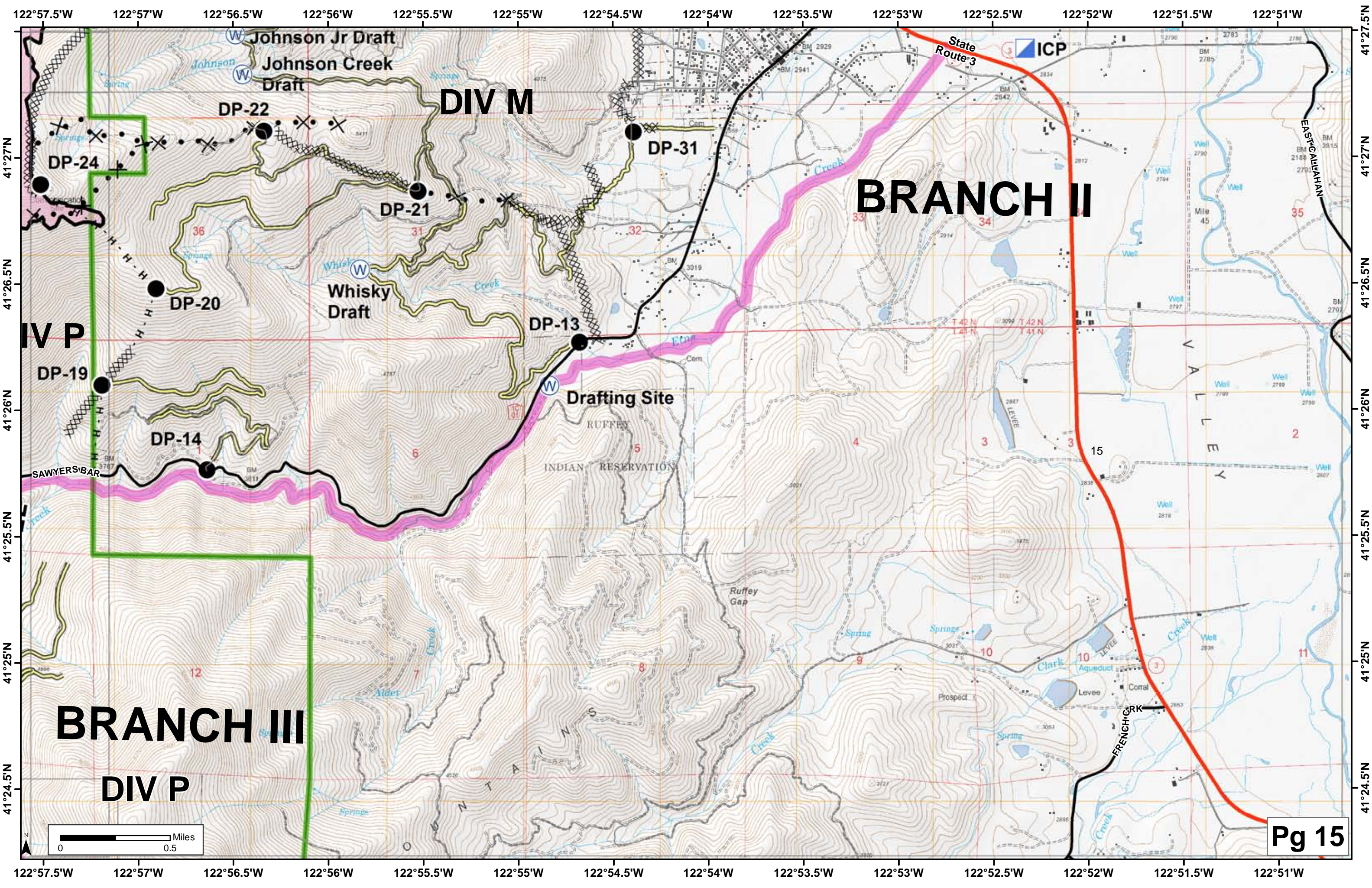
Johnson Jr Draft

Johnson Creek Draft





Upper Abbott Hoist -1



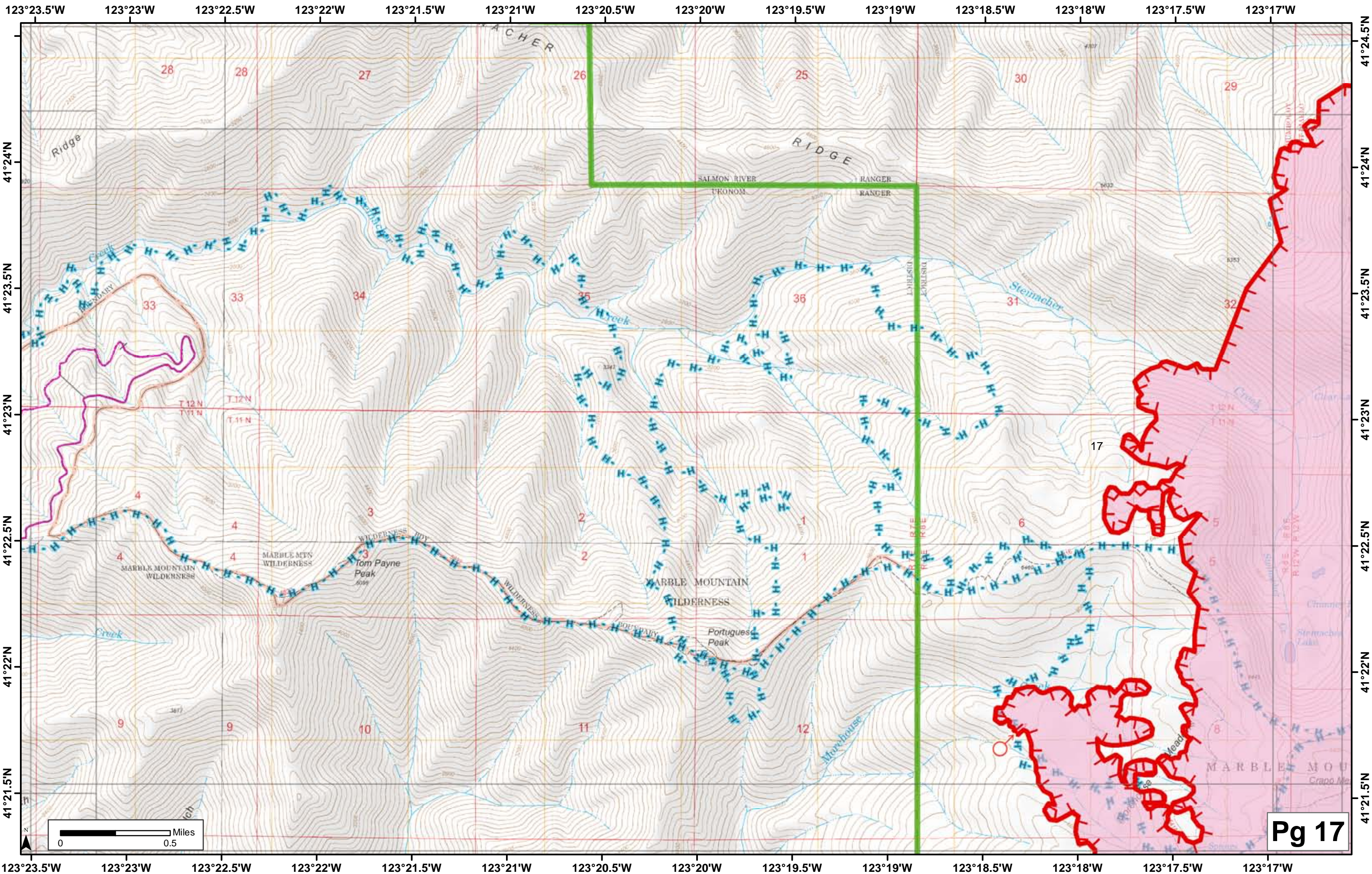
DIV M

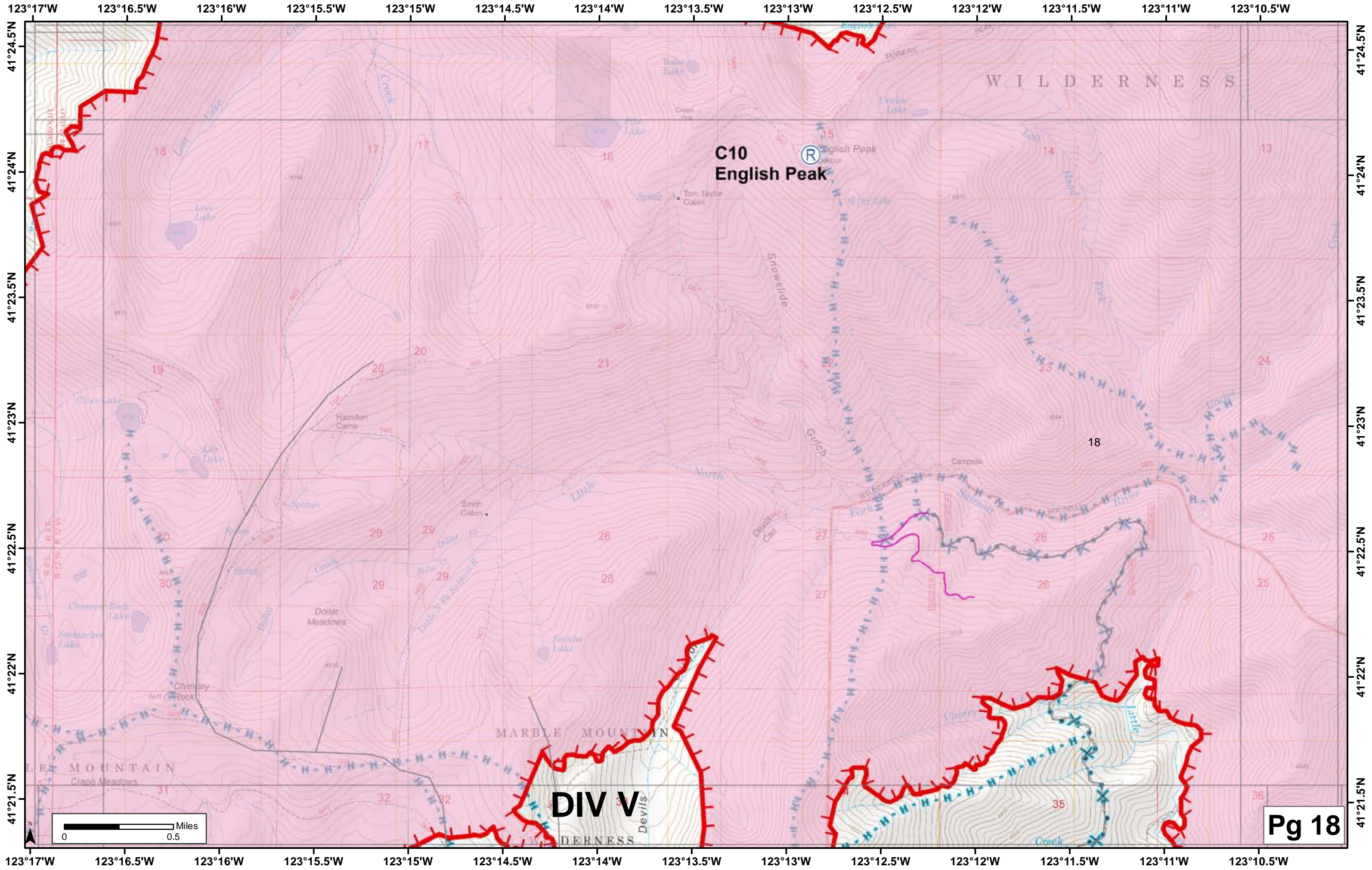
BRANCH II

IV P

BRANCH III

DIV P





C10
English Peak

DIV V

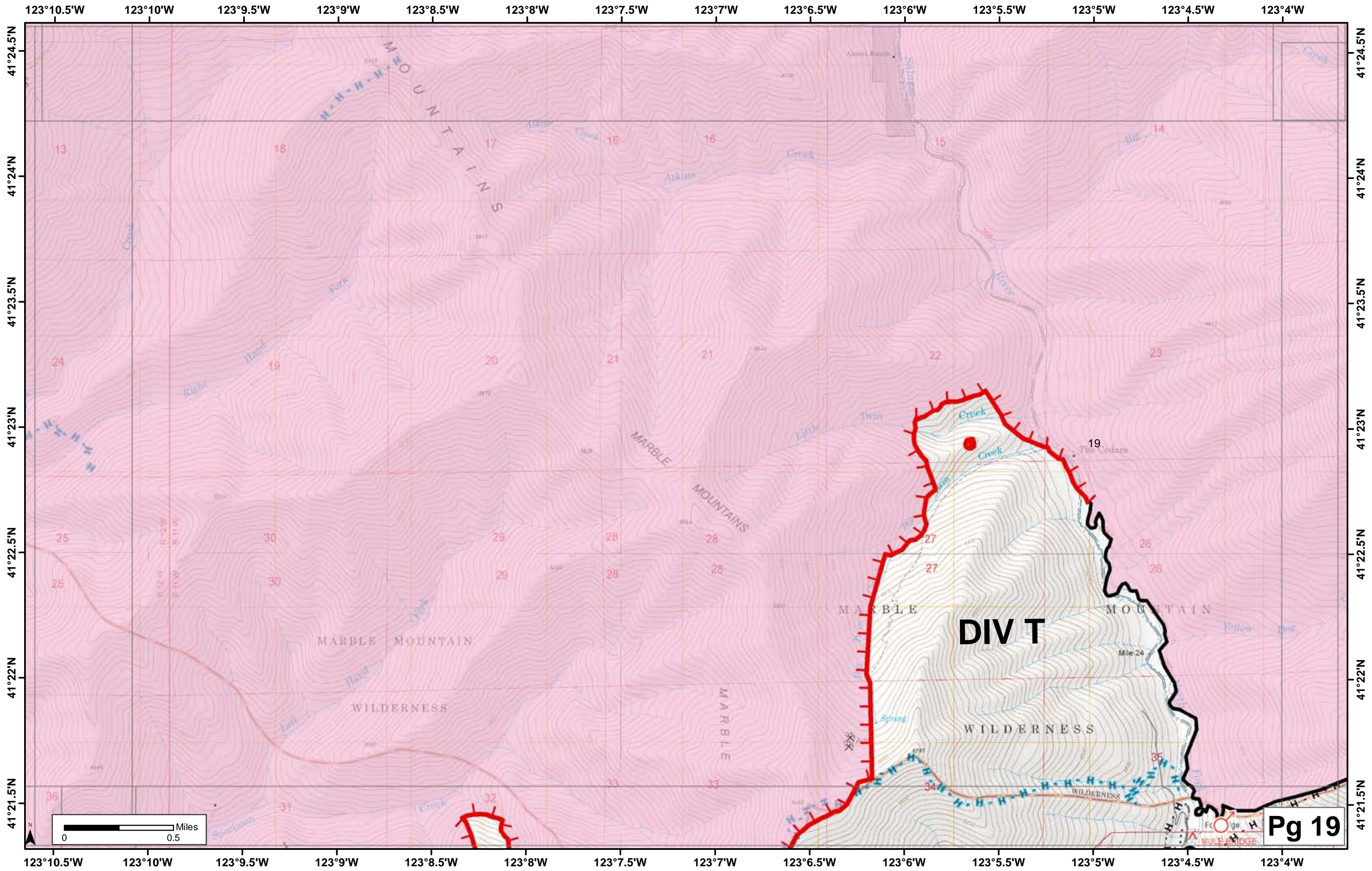
Pg 18

W I L D E R N E S S

MARBLE MOUNTAIN

LE MOUNTAIN





123°10.5'W 123°10'W 123°9.5'W 123°9'W 123°8.5'W 123°8'W 123°7.5'W 123°7'W 123°6.5'W 123°6'W 123°5.5'W 123°5'W 123°4.5'W 123°4'W

41°24.5'N
41°24'N
41°23.5'N
41°23'N
41°22.5'N
41°22'N
41°21.5'N

41°24.5'N
41°24'N
41°23.5'N
41°23'N
41°22.5'N
41°22'N
41°21.5'N

MARBLE MOUNTAINS

MARBLE MOUNTAINS

MARBLE MOUNTAIN

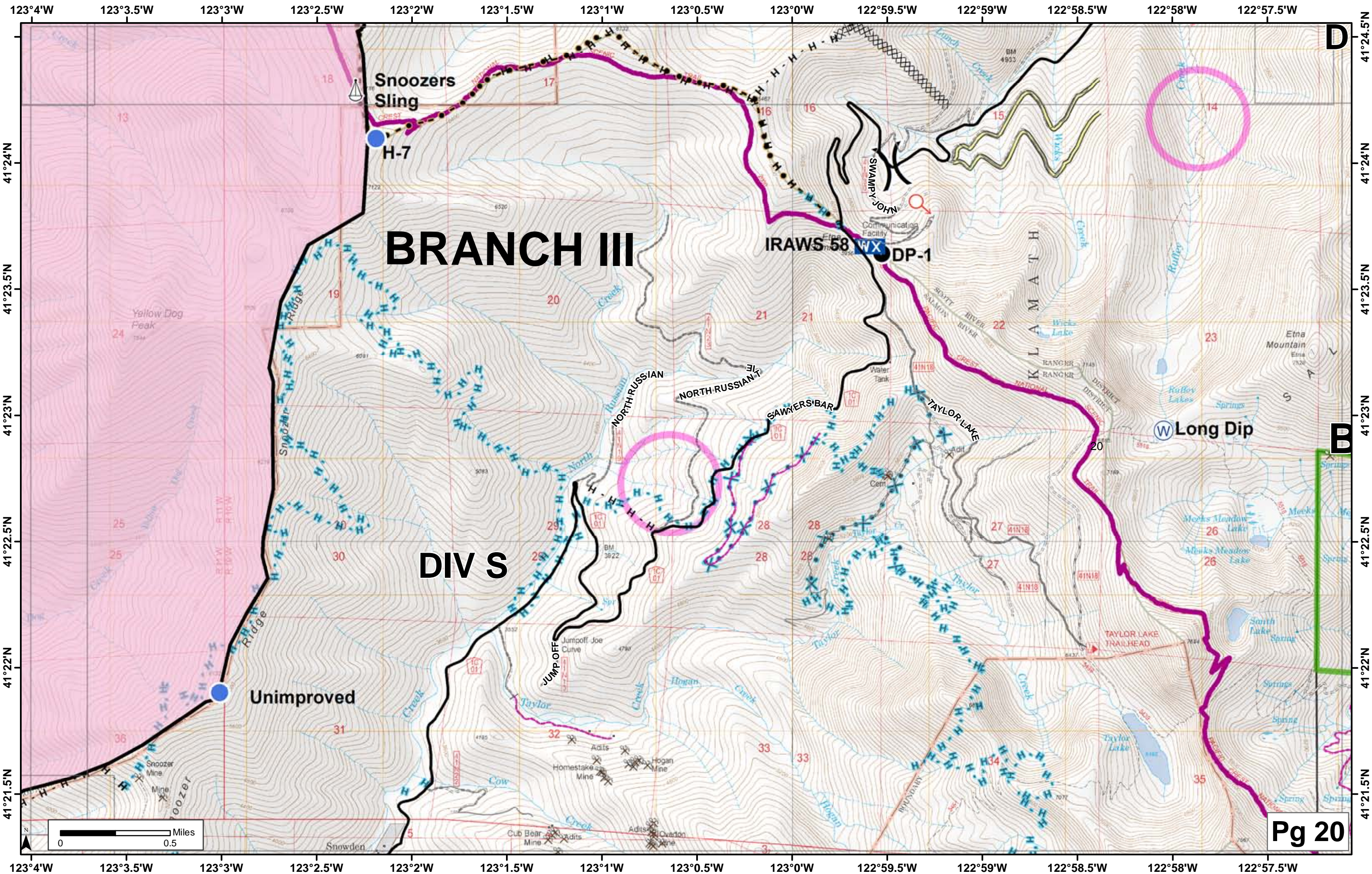
MARBLE MOUNTAIN

DIV T

WILDERNESS

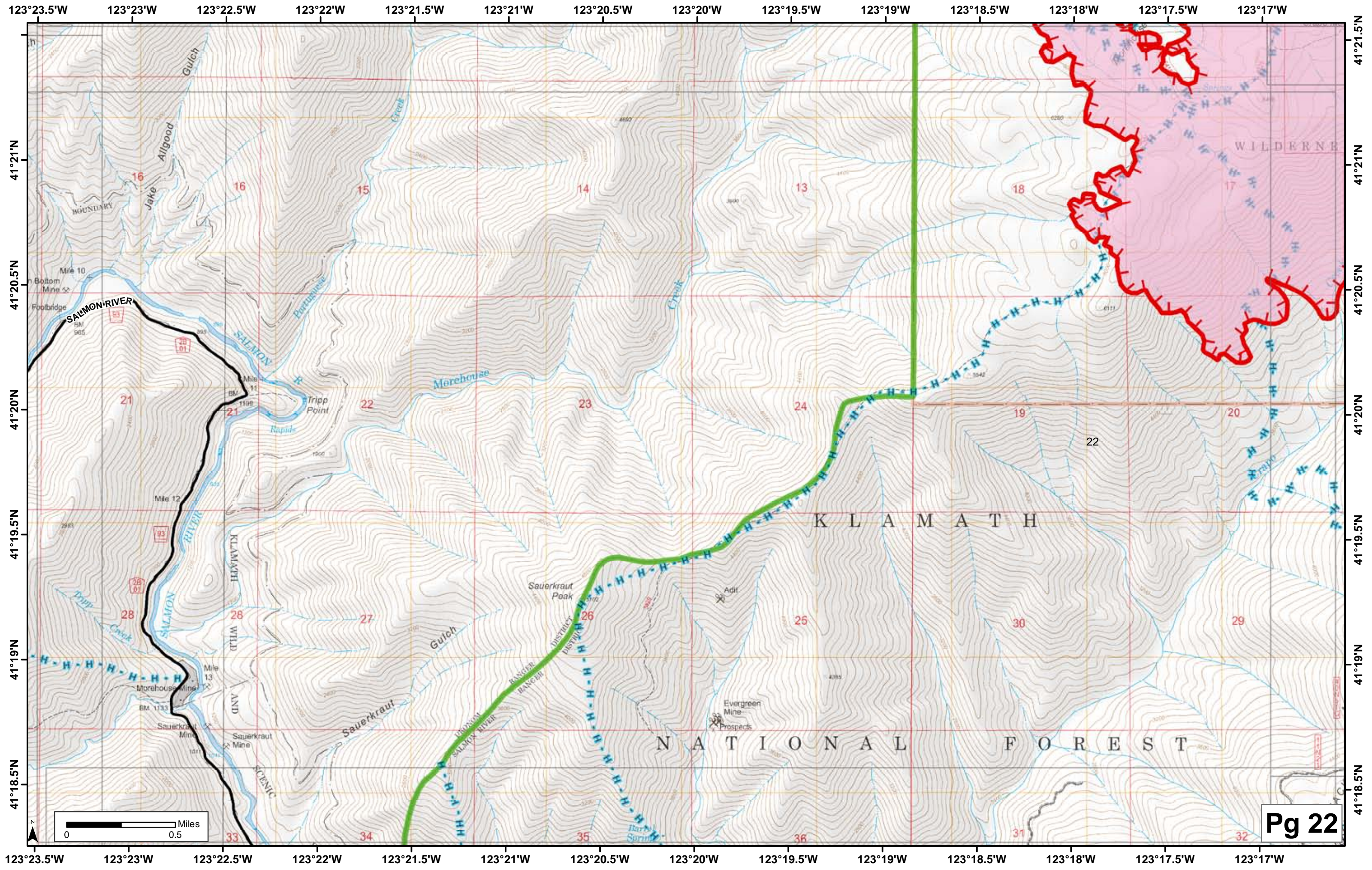
Pg 19



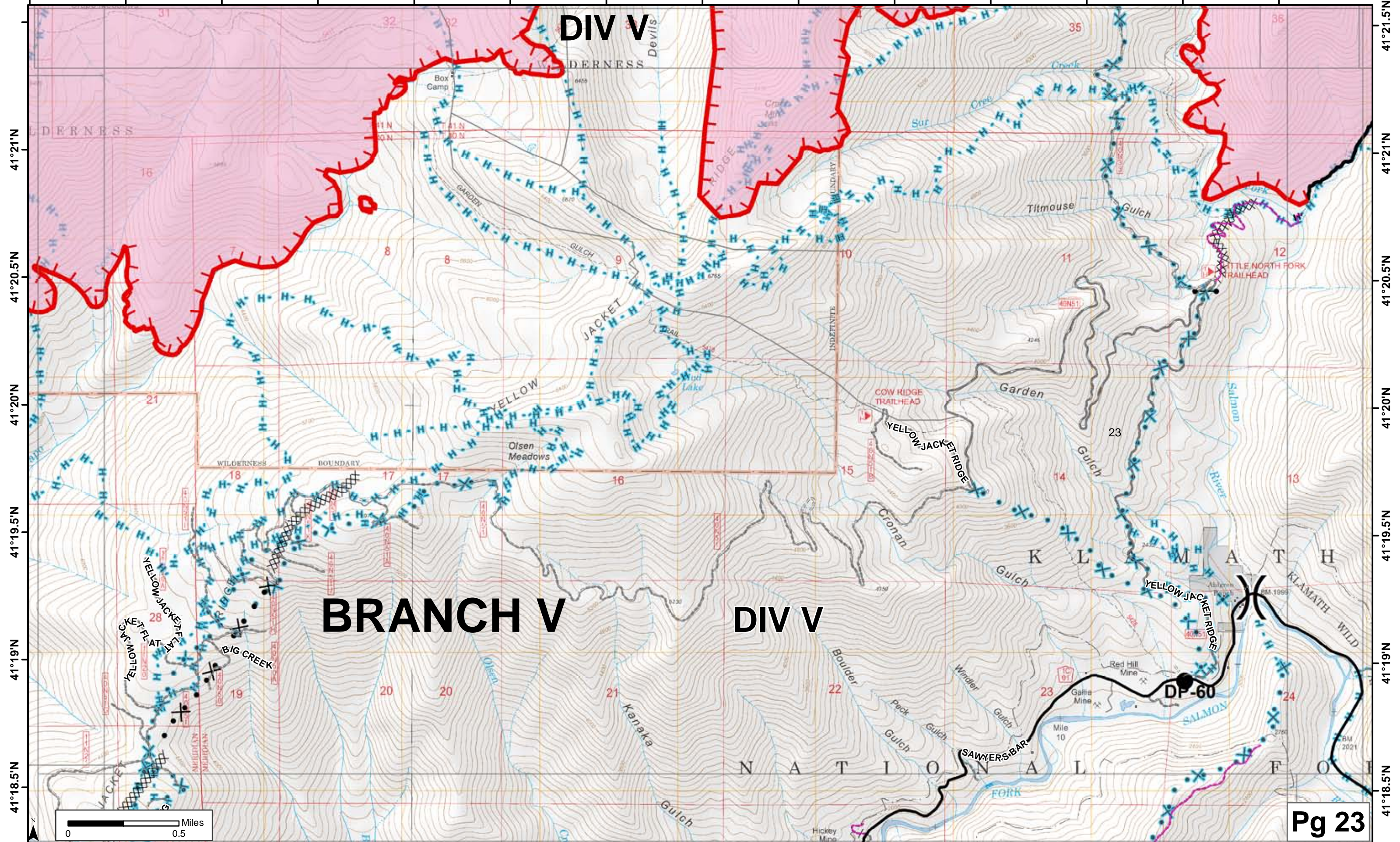


BRANCH III

DIV S



123°17'W 123°16.5'W 123°16'W 123°15.5'W 123°15'W 123°14.5'W 123°14'W 123°13.5'W 123°13'W 123°12.5'W 123°12'W 123°11.5'W 123°11'W 123°10.5'W



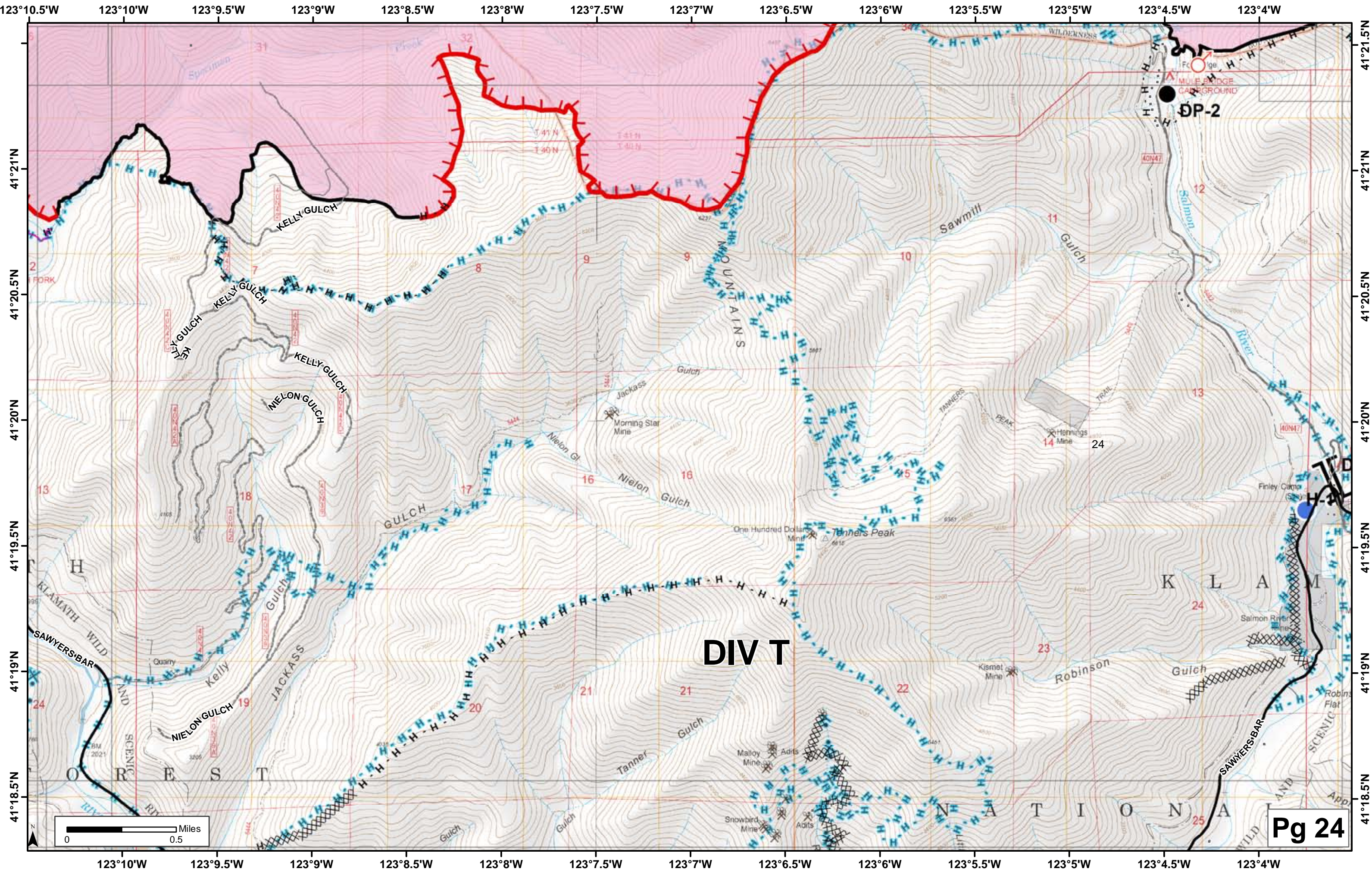
41°21'N
41°20.5'N
41°20'N
41°19.5'N
41°19'N
41°18.5'N

41°21.5'N
41°21'N
41°20.5'N
41°20'N
41°19.5'N
41°19'N
41°18.5'N

DIV V

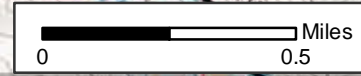
BRANCH V

DIV V



DIV T

DP-2



123°10.5'W 123°10'W 123°9.5'W 123°9'W 123°8.5'W 123°8'W 123°7.5'W 123°7'W 123°6.5'W 123°6'W 123°5.5'W 123°5'W 123°4.5'W 123°4'W

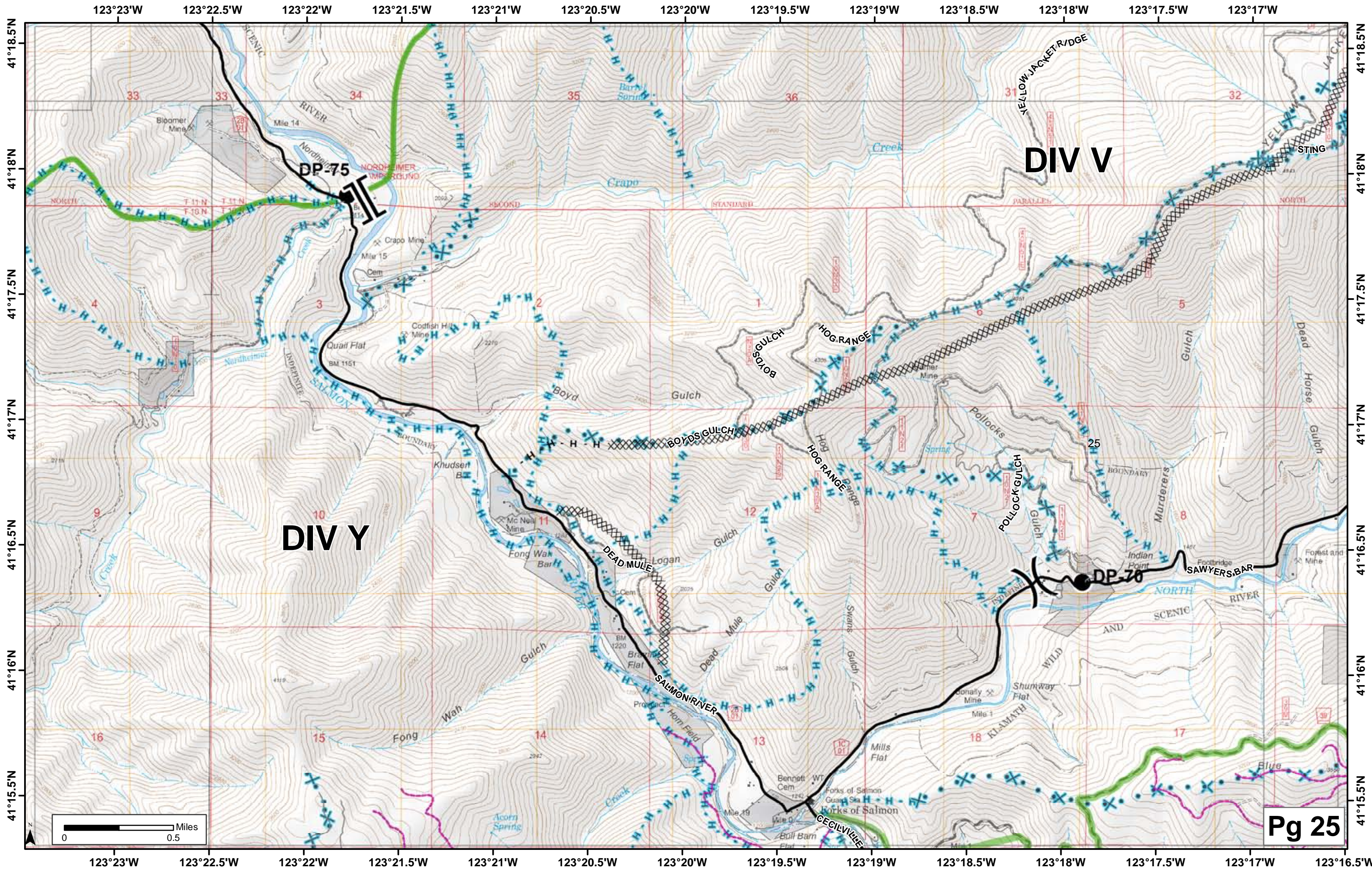
41°21.5'N 41°21'N 41°20.5'N 41°20'N 41°19.5'N 41°19'N 41°18.5'N

KELLY GULCH
NIELON GULCH
Sawmill Gulch
Gulch
Tanner Gulch
Robinson Gulch
Sawyers-Bar
Klamath River
Morning Star Mine
Hennings Mine
Kismet Mine
Mallory Mine
Adits
Snowbird Mine
Quarry
Finley Camp
Salmon River Mine
Robins Flat
Wilderness
Mule Edge Campground
Sawyers-Bar
Klamath
Oregon
Tion
Nati
O
A

31
32
7
8
9
10
11
12
13
14
16
17
18
19
20
21
22
23
24
25

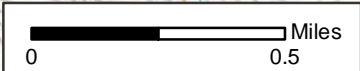
40N47
40N47

0 0.5 Miles



DIV V

DIV Y

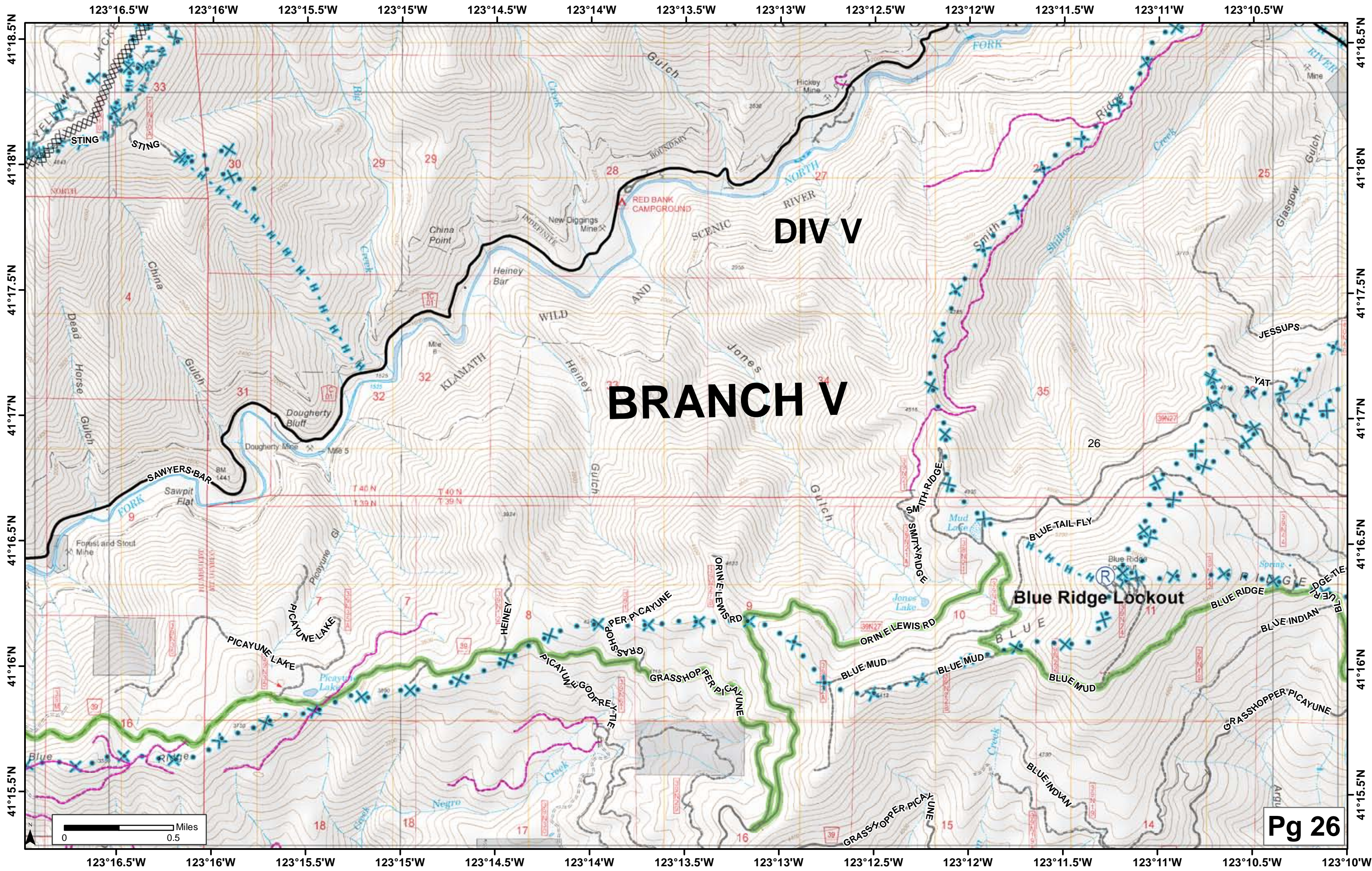


123°23'W 123°22.5'W 123°22'W 123°21.5'W 123°21'W 123°20.5'W 123°20'W 123°19.5'W 123°19'W 123°18.5'W 123°18'W 123°17.5'W 123°17'W

41°18.5'N
41°18'N
41°17.5'N
41°17'N
41°16.5'N
41°16'N
41°15.5'N

41°18.5'N
41°18'N
41°17.5'N
41°17'N
41°16.5'N
41°16'N
41°15.5'N

123°23'W 123°22.5'W 123°22'W 123°21.5'W 123°21'W 123°20.5'W 123°20'W 123°19.5'W 123°19'W 123°18.5'W 123°18'W 123°17.5'W 123°17'W 123°16.5'W



DIV V

BRANCH V

Blue Ridge Lookout

