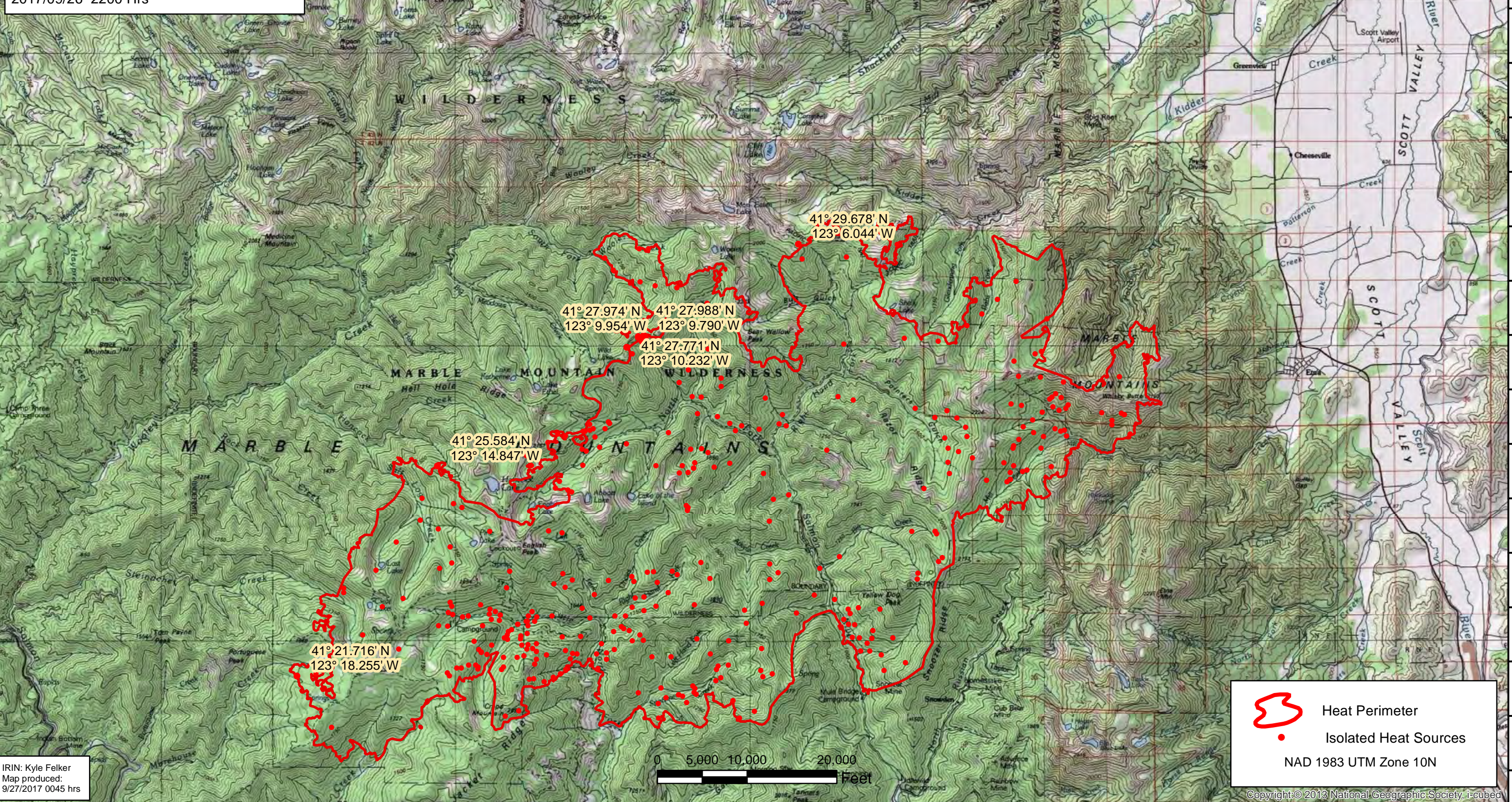


123°25'W 123°24'W 123°23'W 123°22'W 123°21'W 123°20'W 123°19'W 123°18'W 123°17'W 123°16'W 123°15'W 123°14'W 123°13'W 123°12'W 123°11'W 123°10'W 123°9'W 123°8'W 123°7'W 123°6'W 123°5'W 123°4'W 123°3'W 123°2'W 123°1'W 122°59'W 122°58'W 122°57'W 122°56'W 122°55'W 122°54'W 122°53'W 122°52'W 122°51'W 122°50'W 122°49'W

SALMON AUGUST Fire
CA-KNF-006081
Heat Acres: 65,285
Infrared Interpretation
Imagery Date:
2017/09/26 2200 Hrs



M 1:125,000





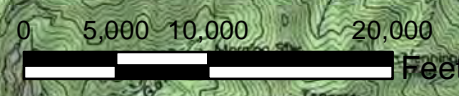
41° 27.974' N 123° 9.954' W
41° 27.988' N 123° 9.790' W
41° 27.771' N 123° 10.232' W

41° 29.678' N
123° 6.044' W

41° 25.584' N
123° 14.847' W

41° 21.716' N
123° 18.255' W

 Heat Perimeter
 Isolated Heat Sources
NAD 1983 UTM Zone 10N



IRIN: Kyle Felker
Map produced:
9/27/2017 0045 hrs

Copyright © 2013 National Geographic Society, i-cubed

123°25'W 123°24'W 123°23'W 123°22'W 123°21'W 123°20'W 123°19'W 123°18'W 123°17'W 123°16'W 123°15'W 123°14'W 123°13'W 123°12'W 123°11'W 123°10'W 123°9'W 123°8'W 123°7'W 123°6'W 123°5'W 123°4'W 123°3'W 123°2'W 123°1'W 122°59'W 122°58'W 122°57'W 122°56'W 122°55'W 122°54'W 122°53'W 122°52'W 122°51'W 122°50'W 122°49'W