

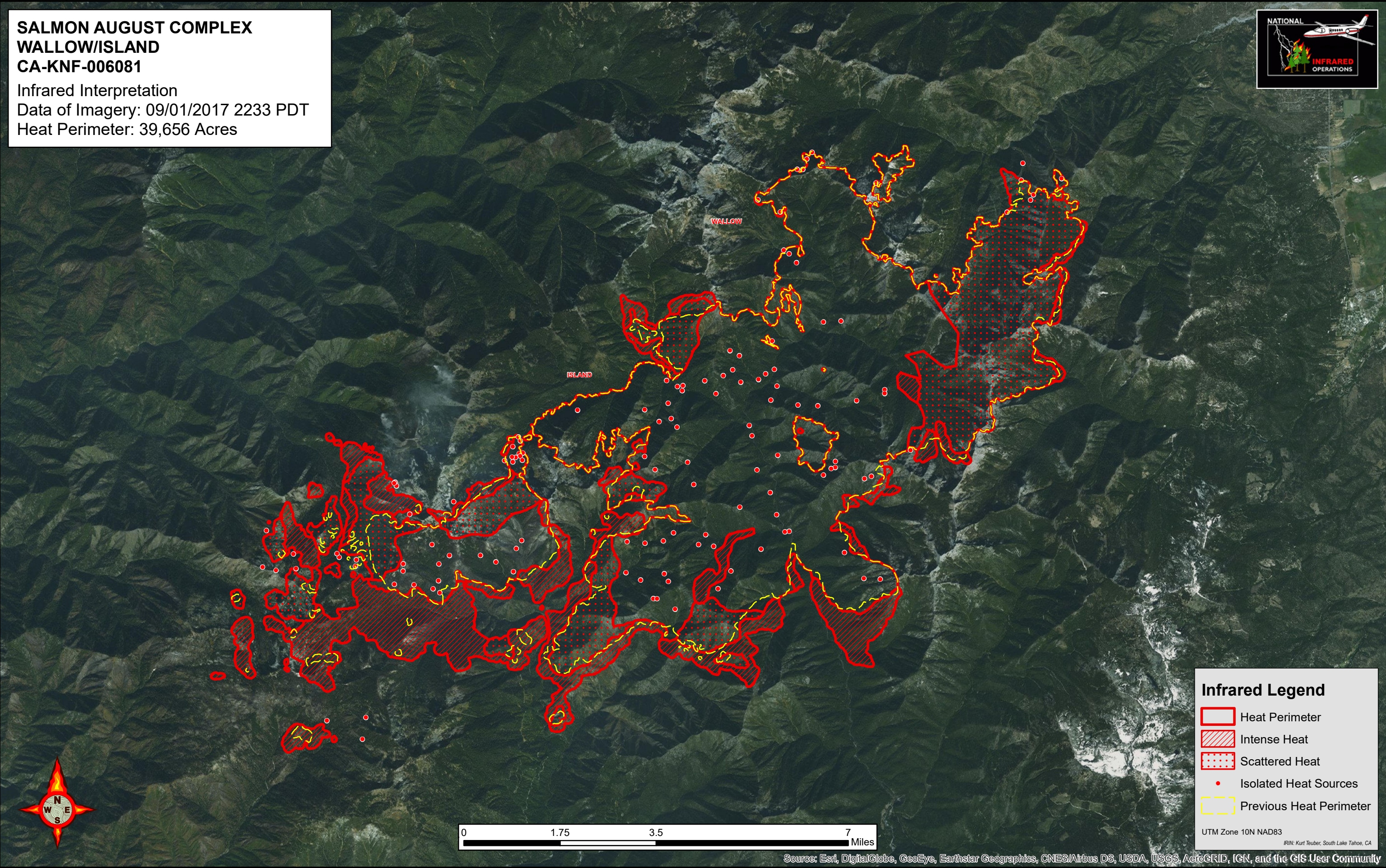
123°22'W 123°21'W 123°20'W 123°19'W 123°18'W 123°17'W 123°16'W 123°15'W 123°14'W 123°13'W 123°12'W 123°11'W 123°10'W 123°9'W 123°8'W 123°7'W 123°6'W 123°5'W 123°4'W 123°3'W 123°2'W 123°1'W 123°0'W 122°59'W 122°58'W 122°57'W 122°56'W 122°55'W 122°54'W

**SALMON AUGUST COMPLEX  
WALLOW/ISLAND  
CA-KNF-006081**  
Infrared Interpretation  
Data of Imagery: 09/01/2017 2233 PDT  
Heat Perimeter: 39,656 Acres



41°32'N  
41°31'N  
41°30'N  
41°29'N  
41°28'N  
41°27'N  
41°26'N  
41°25'N  
41°24'N  
41°23'N  
41°22'N  
41°21'N  
41°20'N  
41°19'N






41°32'N  
41°31'N  
41°30'N  
41°29'N  
41°28'N  
41°27'N  
41°26'N  
41°25'N  
41°24'N  
41°23'N  
41°22'N  
41°21'N  
41°20'N  
41°19'N



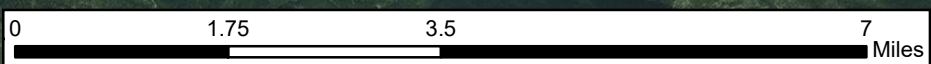
WALLOW

ISLAND

**Infrared Legend**

-  Heat Perimeter
-  Intense Heat
-  Scattered Heat
-  Isolated Heat Sources
-  Previous Heat Perimeter

UTM Zone 10N NAD83  
IRIN: Kurt Teuber, South Lake Tahoe, CA



Source: Esri, DigitalGlobe, GeoEye, Earthstar Geographics, CNES/Airbus DS, USDA, USGS, AeroGRID, IGN, and the GIS User Community

123°22'W 123°21'W 123°20'W 123°19'W 123°18'W 123°17'W 123°16'W 123°15'W 123°14'W 123°13'W 123°12'W 123°11'W 123°10'W 123°9'W 123°8'W 123°7'W 123°6'W 123°5'W 123°4'W 123°3'W 123°2'W 123°1'W 123°0'W 122°59'W 122°58'W 122°57'W 122°56'W 122°55'W 122°54'W