

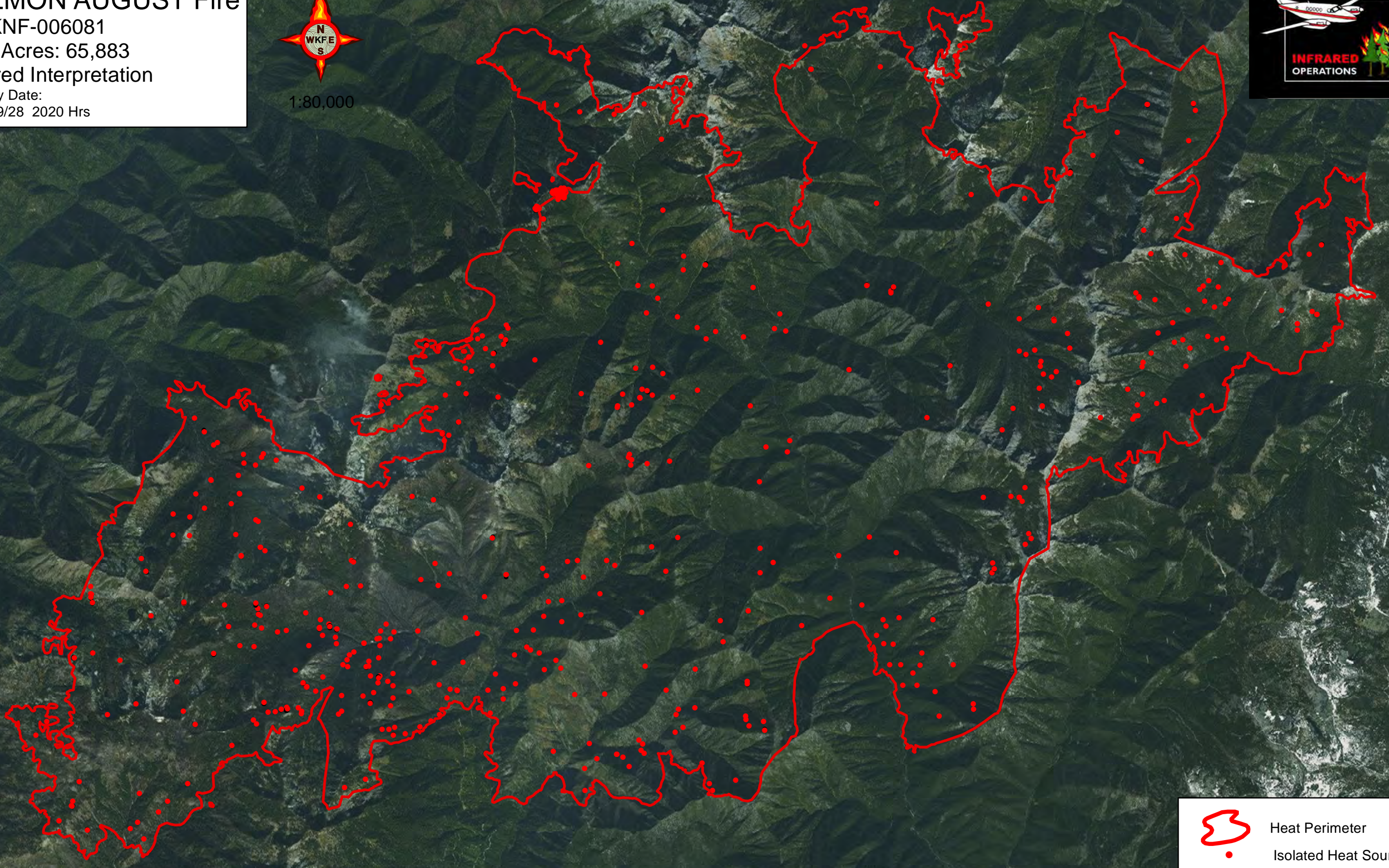
123°19'W 123°18'W 123°17'W 123°16'W 123°15'W 123°14'W 123°13'W 123°12'W 123°11'W 123°10'W 123°9'W 123°8'W 123°7'W 123°6'W 123°5'W 123°4'W 123°3'W 123°2'W 123°1'W 123°0'W 122°59'W 122°58'W 122°57'W 122°56'W

SALMON AUGUST Fire
CA-KNF-006081
Heat Acres: 65,883
Infrared Interpretation
Imagery Date:
2017/09/28 2020 Hrs

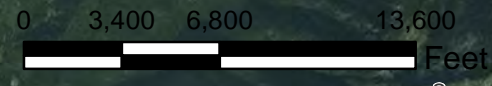




41°30'N
41°29'N
41°28'N
41°27'N
41°26'N
41°25'N
41°24'N
41°23'N
41°22'N
41°21'N
41°20'N

41°30'N
41°29'N
41°28'N
41°27'N
41°26'N
41°25'N
41°24'N
41°23'N
41°22'N
41°21'N
41°20'N



IRIN: Kyle Felker
Map produced:
9/28/2017 2220 hrs



-  Heat Perimeter
-  Isolated Heat Sources

NAD 1983 UTM Zone 10N

Source: Esri, DigitalGlobe, GeoEye, Earthstar Geographics, CNES/Airbus DS, USDA, USGS, AeroGRID, IGN, and the GIS User Community

123°19'W 123°18'W 123°17'W 123°16'W 123°15'W 123°14'W 123°13'W 123°12'W 123°11'W 123°10'W 123°9'W 123°8'W 123°7'W 123°6'W 123°5'W 123°4'W 123°3'W 123°2'W 123°1'W 123°0'W 122°59'W 122°58'W 122°57'W 122°56'W