

Camp	Repeater	Completed Dozer Line	Branch
Drop Point	Retardant/Mud Pit	Completed Line	
Gate	Sling Site	H - H Hand Line	
Helibase	Spot Fire	R - R Road as Completed Line	
Helispot	Water Source	Planned Fire Line	
Incident Command Post	Restricted Water Source	Proposed Dozer Line	Division
Mobile Weather Unit	Other		
	Uncontrolled Fire Edge		

003
Ash Pile
41° 20.632' N
123° 17.725' W
Div V

032
Stumps - Multiple Locations
41° 21.567' N
123° 12.817' W
Div V

056
Ash Pile - Multiple Locations
41° 21.824' N
123° 8.446' W
Div T

080
Scattered Heat
41° 21.605' N
123° 3.567' W
Div S

093
Stumps - Multiple Locations
41° 25.301' N
122° 59.985' W
Div P

107
Creeping Fire
41° 26.609' N
122° 57.642' W
Div M

VETS
Cost Effective Infrared
www.ETSresponse.com
805.218-9646
www.aspenhelo.com
805.985-5416

- Hot Spot - Within 200' of the line (Heat above 200 degrees, Little Vegetation in Vicinity)
- Hot Spot - Within 200' of the line (Heat above 200 degrees, Unburned Vegetation in Vicinity)
- Live Fire - Uncontained Spot Fire or Fire Front

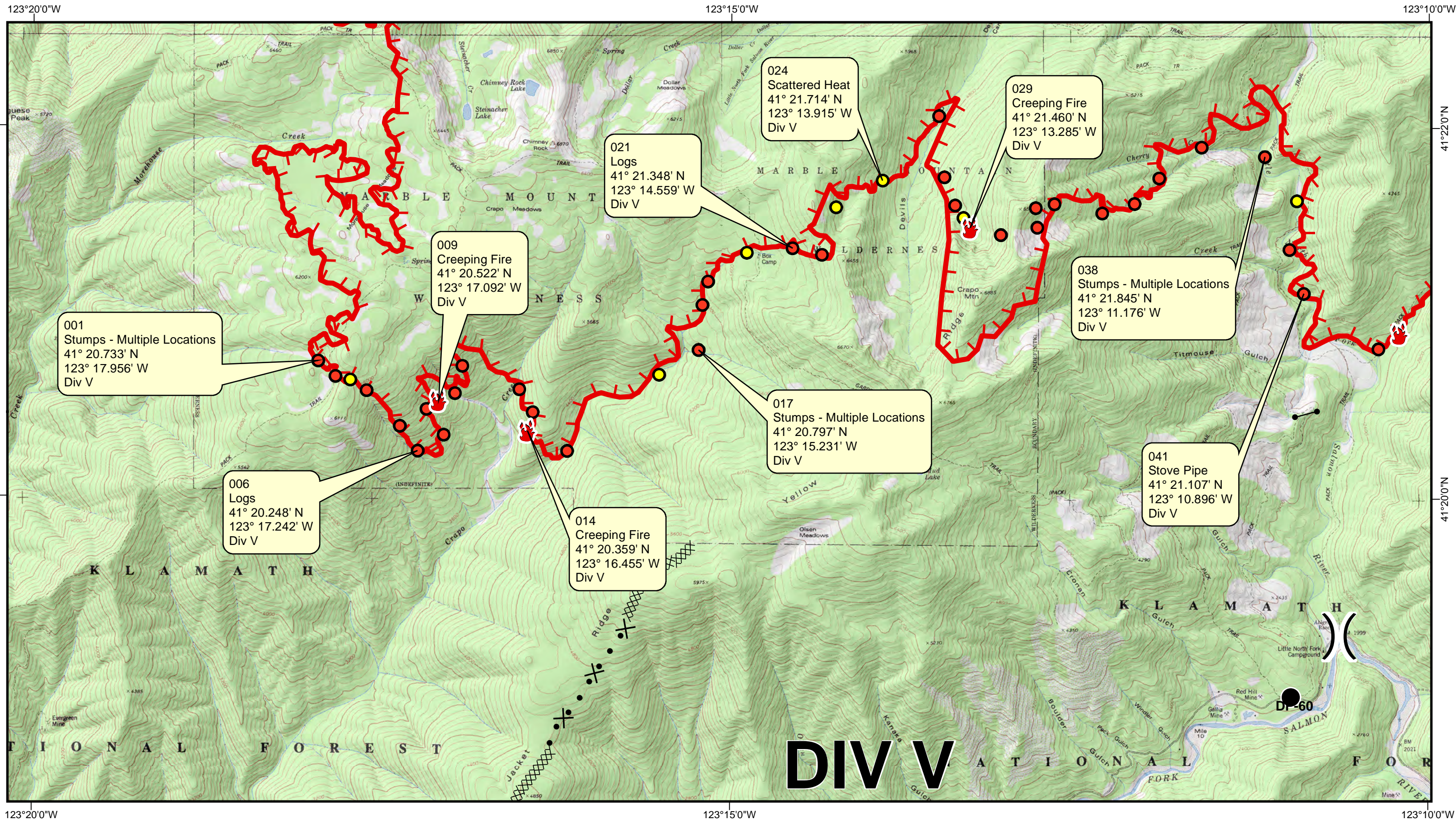
Salmon Complex

CA-KNF-006081

0 0.75 1.5 3 4.5 6 Miles

INDEX - OAK FIRE
Data Collected: 20170908 @ 1430

Sept. 08, 2017



DIV V

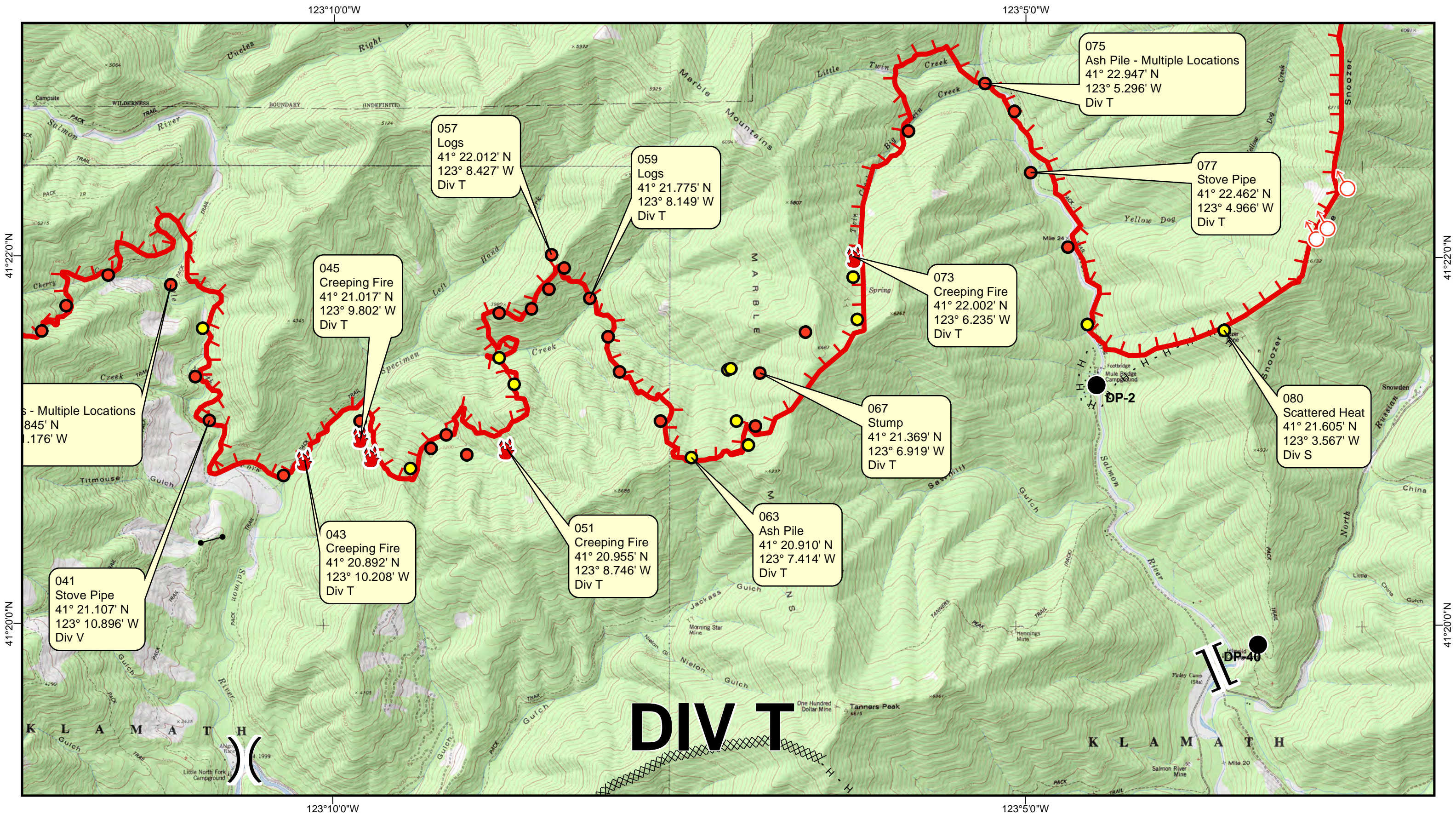
www.ETSresponse.com
 805.218-9646
VETS
 Cost Effective Infrared
www.aspenhelo.com
 805.985-5416

- Hot Spot - Within 200' of the line (Heat above 200 degrees, Little Vegetation in Vicinity)
- Hot Spot - Within 200' of the line (Heat above 200 degrees, Unburned Vegetation in Vicinity)
- Live Fire - Uncontained Spot Fire or Fire Front

Salmon Complex
CA-KNF-006081

DIV V
 Data Collected: 20170908 @ 1430

Sept. 08, 2017



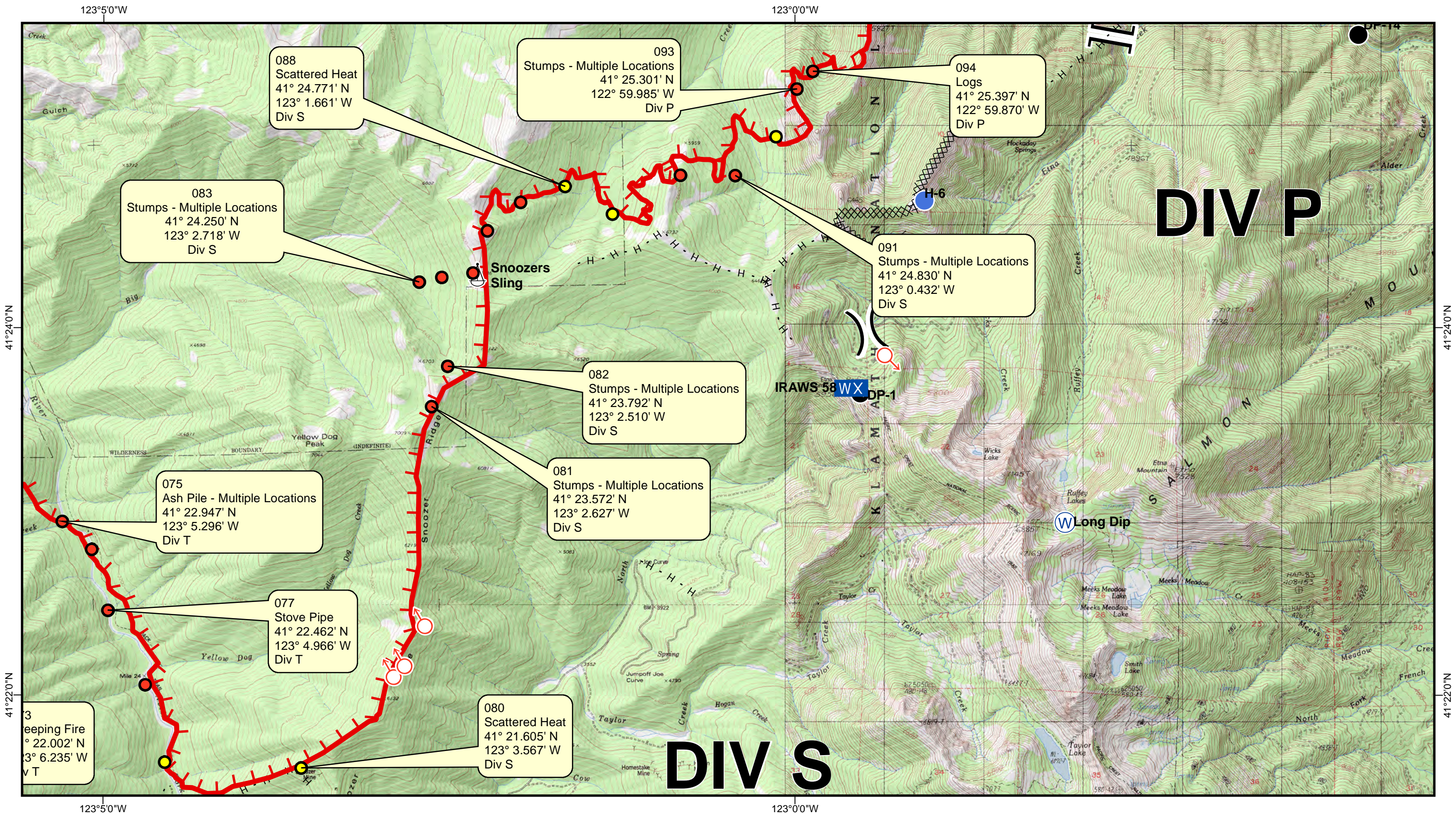
VETS
www.ETSresponse.com
805.218-9646
Cost Effective Infrared
www.aspenhelo.com
805.985-5416

- Hot Spot - Within 200' of the line (Heat above 200 degrees, Little Vegetation in Vicinity)
- Hot Spot - Within 200' of the line (Heat above 200 degrees, Unburned Vegetation in Vicinity)
- Live Fire - Uncontained Spot Fire or Fire Front

Salmon Complex
CA-KNF-006081

DIV T
Data Collected: 20170908 @ 1430

Sept. 08, 2017



www.ETSresponse.com
805.218-9646

VETS
Cost Effective Infrared

www.aspenhelo.com
805.985-5416

Aspen Helicopters

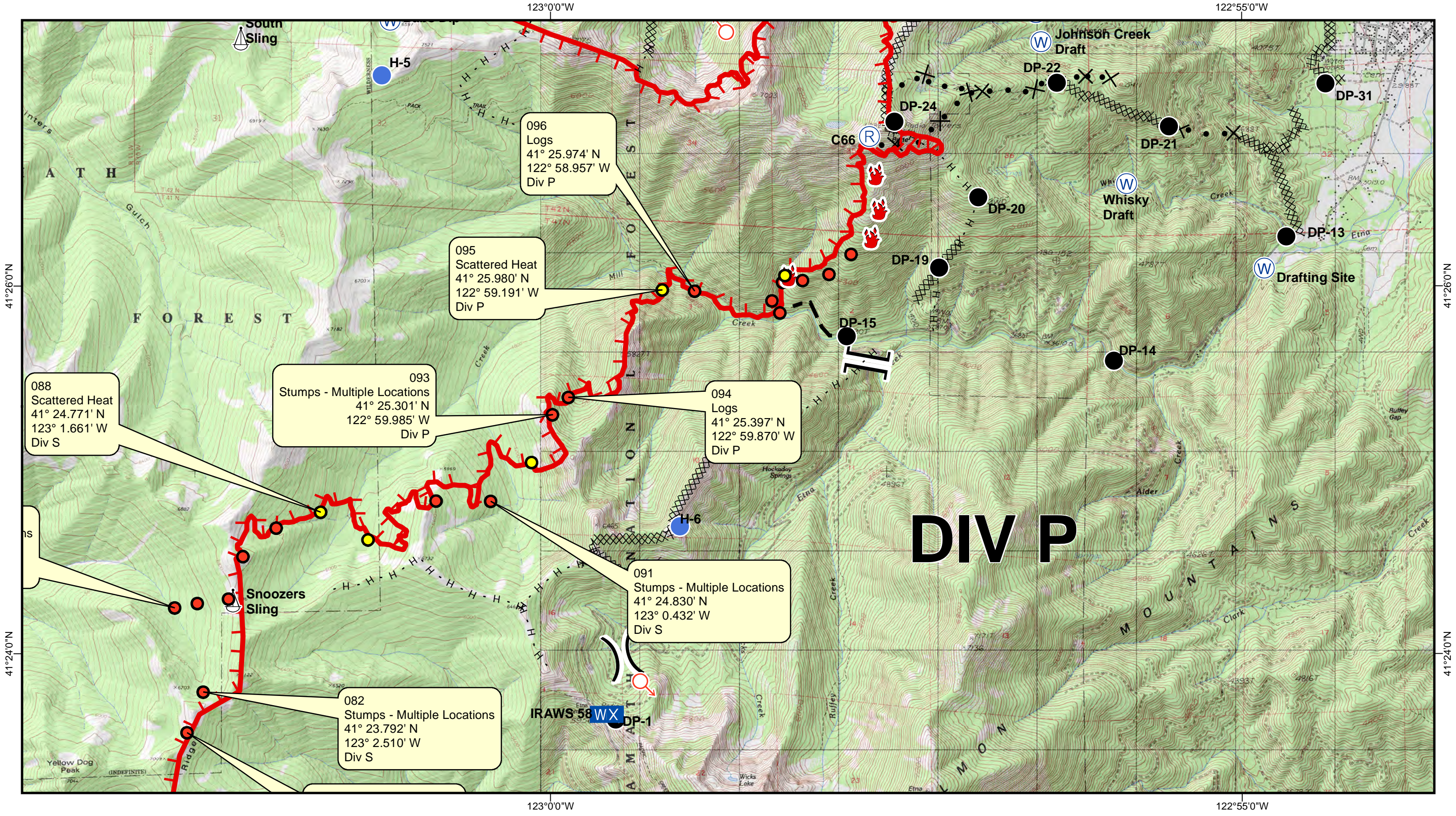
- Hot Spot - Within 200' of the line (Heat above 200 degrees, Little Vegetation in Vicinity)
- Hot Spot - Within 200' of the line (Heat above 200 degrees, Unburned Vegetation in Vicinity)
- Live Fire - Uncontained Spot Fire or Fire Front

Salmon Complex
CA-KNF-006081

0 0.25 0.5 1 1.5 2 Miles

DIV S
Data Collected: 20170908 @ 1430

Sept. 08, 2017



www.ETSresponse.com
805.218-9646

VETS
Cost Effective Infrared

www.aspenhelo.com
805.985-5416

Aspen Helicopters

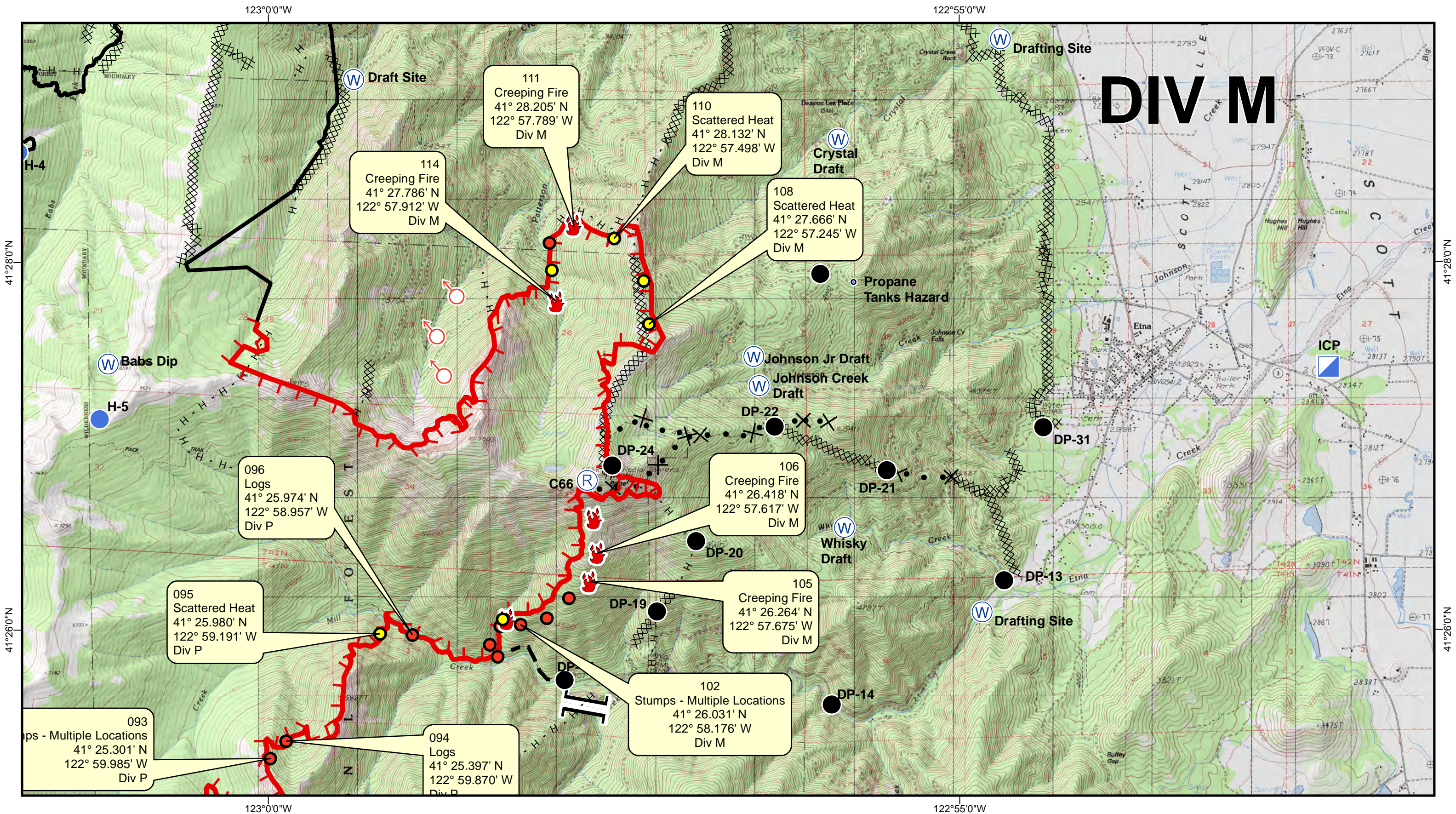
- Hot Spot - Within 200' of the line (Heat above 200 degrees, Little Vegetation in Vicinity)
- Hot Spot - Within 200' of the line (Heat above 200 degrees, Unburned Vegetation in Vicinity)
- Live Fire - Uncontained Spot Fire or Fire Front

Salmon Complex
CA-KNF-006081

0 0.25 0.5 1 1.5 2 Miles

DIV S
Data Collected: 20170908 @ 1430

Sept. 08, 2017



DIV M

www.ETSresponse.com
 805.218-9646
VETS
 Cost Effective Infrared
www.aspenhelo.com
 805.985-5416

- Hot Spot - Within 200' of the line (Heat above 200 degrees, Little Vegetation in Vicinity)
- Hot Spot - Within 200' of the line (Heat above 200 degrees, Unburned Vegetation in Vicinity)
- Live Fire - Uncontained Spot Fire or Fire Front

Salmon Complex




CA-KNF-006081

DIV M
 Data Collected: 20170908 @ 1430

Sept. 08, 2017



INFRARED MAP LEGEND

-  Hot Spot - Moderate Priority (Possible Threat to Fireline)
-  Hot Spot - Significant Priority (Considerable Threat to Fireline)
-  Live Fire - Uncontained Spot Fire or Fire Front

GPS Coordinates are in Degrees & Decimal Minutes (DD° MM.mmmm')

Datum is WGS 84 (unless otherwise noted on map)

Ex. 34° 04.405
-118° 14.414

Date and Time is when the intelligence was gathered

Heat Sources are normally acquired within a 400 foot strip, 200 feet inside and 200 feet outside the fire line or fire front (wider strips are flown as necessary and are labeled on infrared map).

LIMITS TO INFRARED AND GPS INFORMATION

Under the best conditions heat sources less than 4 to 6 inches in diameter are inconsistent.

Very Small Heat sources under heavy canopy or in large rock piles are difficult to verify.

Accuracy of GPS coordinates is within 50 feet, 90% of the time.

Labeling Details:

