

VETERAN'S EMERGENCY TECHNICAL SERVICES  
www.VETSresponse.com  
805.218-9646

**VETS**  
Cost Effective Infrared

www.aspenhelo.com  
805.985-5416

Aspen Helicopters

- Hot Spot - Within 200' of the line (Heat above 200 degrees, Little Vegetation in Vicinity)
- Hot Spot - Within 200' of the line (Heat above 200 degrees, Unburned Vegetation in Vicinity)
- 🔥 Live Fire - Uncontained Spot Fire or Fire Front

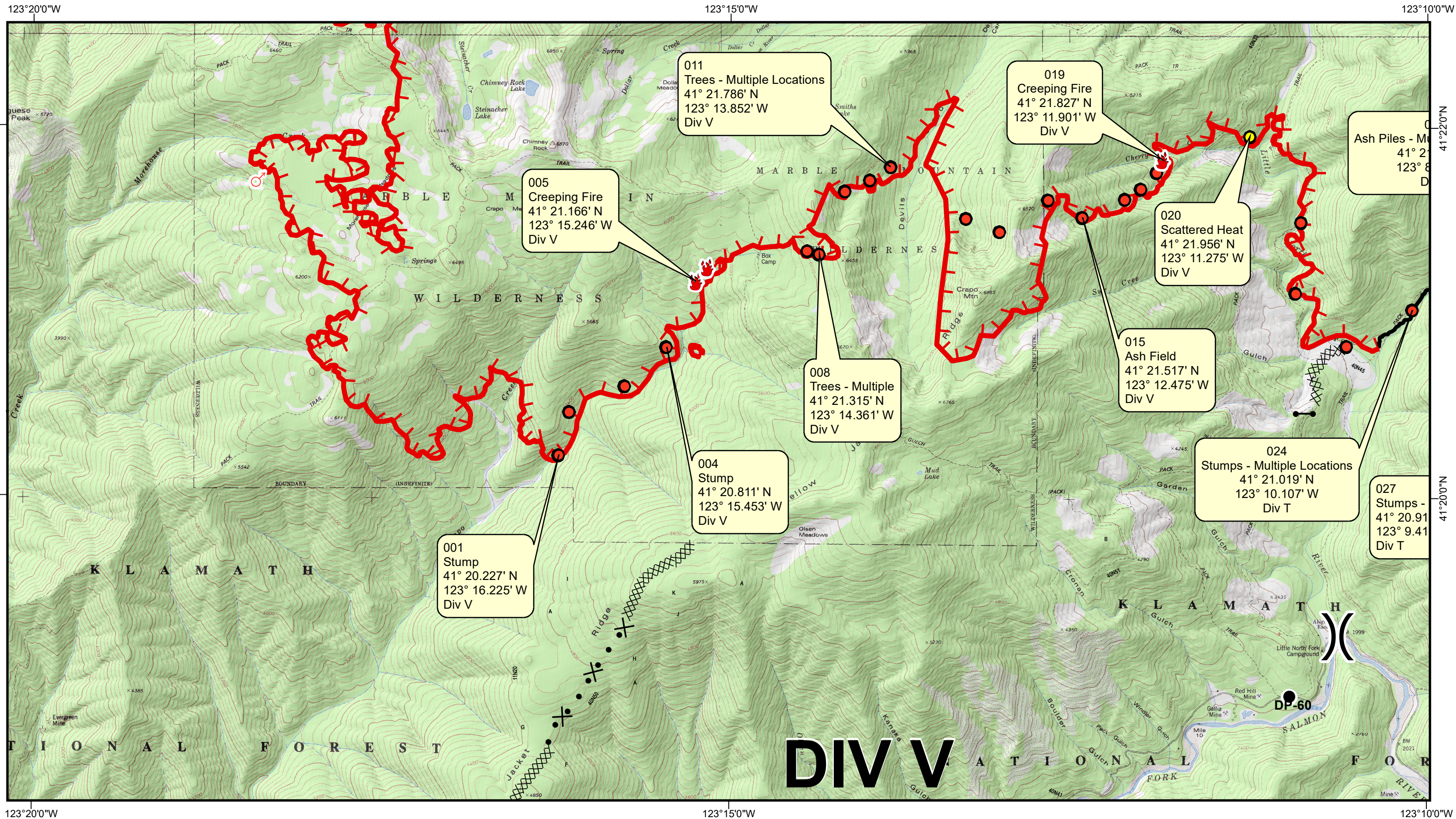
# Salmon Complex

CA-KNF-006081

0 0.75 1.5 3 4.5 6 Miles

**INDEX - WALLOW FIRE**  
Data Collected: 20170913 @ 1300

Sept. 13, 2017



VETERAN'S EMERGENCY TECHNICAL SERVICES  
**VETS**  
 Cost Effective Infrared  
 www.VETSresponse.com  
 805.218-9646

Setting the Standards Since 1982  
**Aspen Helicopters**  
 www.aspenhelo.com  
 805.985-5416

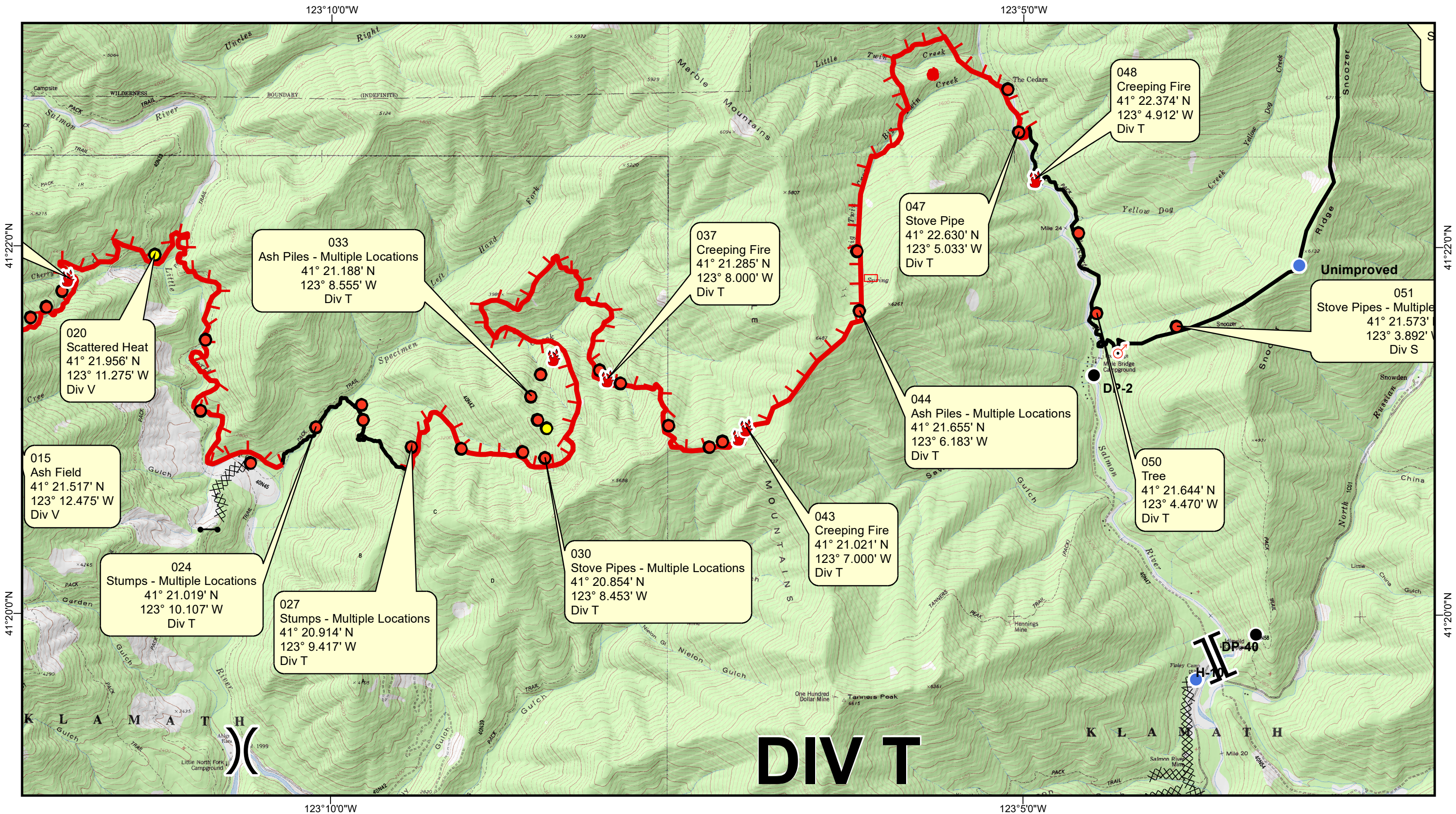
- Hot Spot - Within 200' of the line (Heat above 200 degrees, Little Vegetation in Vicinity)
- Hot Spot - Within 200' of the line (Heat above 200 degrees, Unburned Vegetation in Vicinity)
- Live Fire - Uncontained Spot Fire or Fire Front

**Salmon Complex**  
**CA-KNF-006081**

0 0.25 0.5 1 1.5 2 Miles

**DIV V - WALLOW FIRE**  
 Data Collected: 20170913 @ 1300

Sept. 13, 2017



**DIV T**

VETERAN'S EMERGENCY TECHNICAL SERVICES  
[www/VETSresponse.com](http://www/VETSresponse.com)  
 805.218-9646

**VETS**  
 Cost Effective Infrared

[www.aspenhelo.com](http://www.aspenhelo.com)  
 805.985-5416

**Aspen Helicopters**

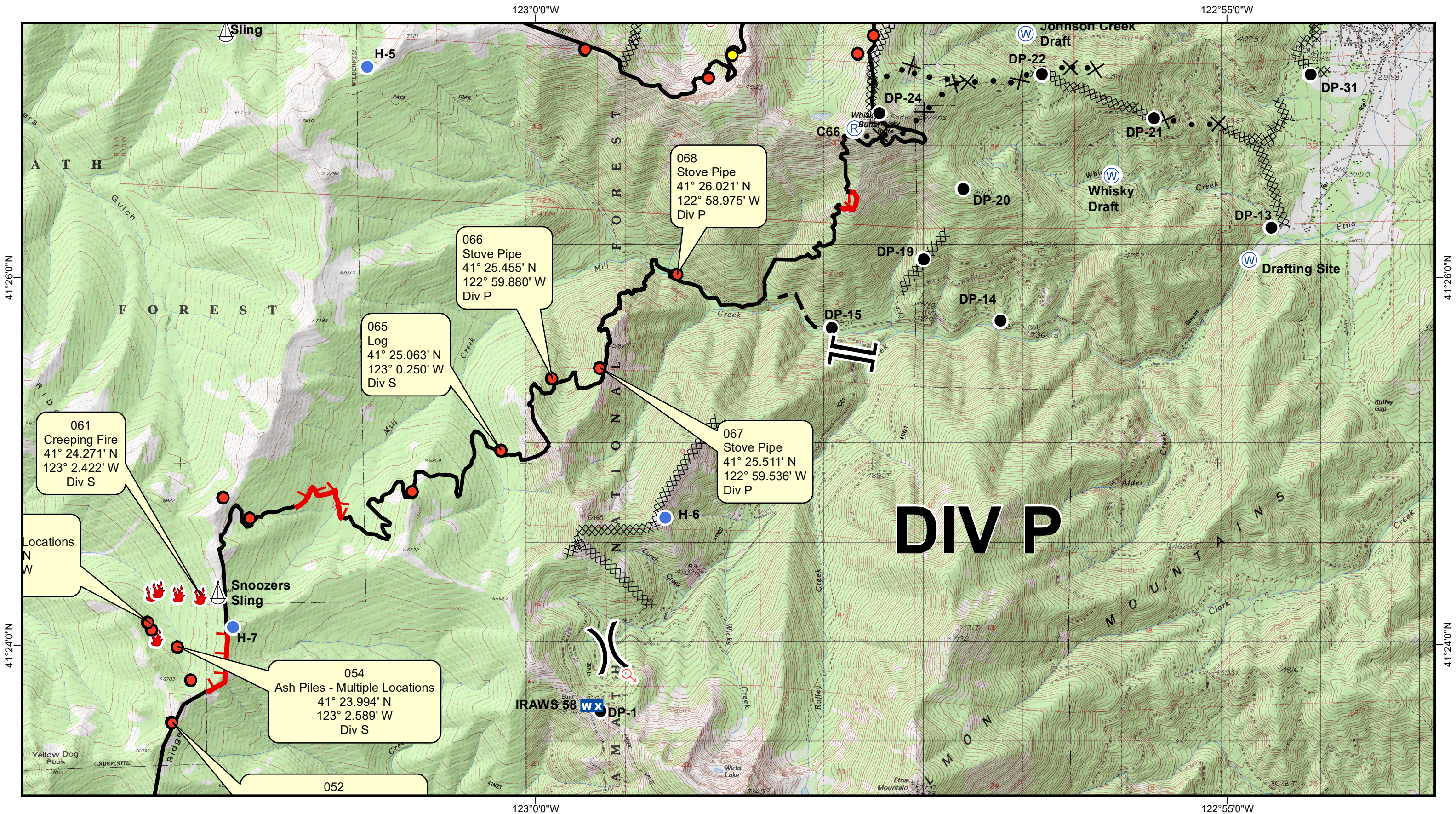
- Hot Spot - Within 200' of the line (Heat above 200 degrees, Little Vegetation in Vicinity)
- Hot Spot - Within 200' of the line (Heat above 200 degrees, Unburned Vegetation in Vicinity)
- 🔥 Live Fire - Uncontained Spot Fire or Fire Front

**Salmon Complex**  
**CA-KNF-006081**

0 0.25 0.5 1 1.5 2 Miles

**DIV T - WALLOW FIRE**  
 Data Collected: 20170913 @ 1300

Sept. 13, 2017



061  
Creeping Fire  
41° 24.271' N  
123° 2.422' W  
Div S

065  
Log  
41° 25.063' N  
123° 0.250' W  
Div S

066  
Stove Pipe  
41° 25.455' N  
122° 59.880' W  
Div P

068  
Stove Pipe  
41° 26.021' N  
122° 58.975' W  
Div P

067  
Stove Pipe  
41° 25.511' N  
122° 59.536' W  
Div P

054  
Ash Piles - Multiple Locations  
41° 23.994' N  
123° 2.589' W  
Div S

Locations  
NW




**DIV P**

VETERAN'S EMERGENCY TECHNICAL SERVICES  
www.VETSresponse.com  
805.218-9646

**VETS**  
Cost Effective Infrared

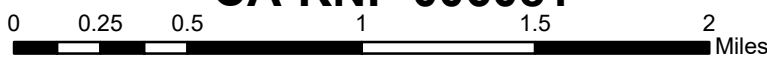
www.aspenhelo.com  
805.985-5416

Aspen Helicopters  
Setting the Standards Since 1980

-  Hot Spot - Within 200' of the line (Heat above 200 degrees, Little Vegetation in Vicinity)
-  Hot Spot - Within 200' of the line (Heat above 200 degrees, Unburned Vegetation in Vicinity)
-  Live Fire - Uncontained Spot Fire or Fire Front

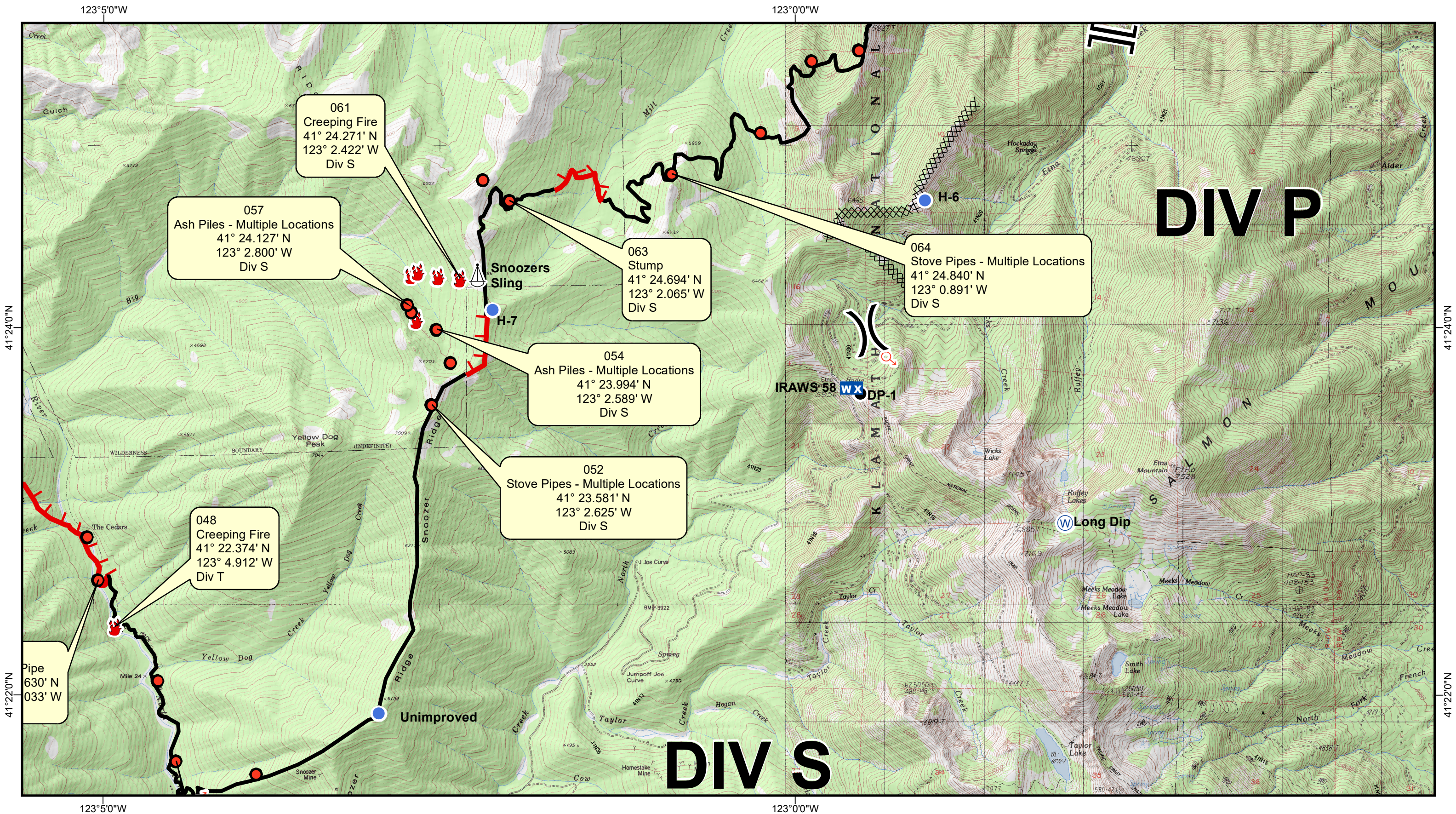
# Salmon Complex

## CA-KNF-006081



**DIV P - WALLOW FIRE**  
Data Collected: 20170913 @ 1300

Sept. 13, 2017



061  
Creeping Fire  
41° 24.271' N  
123° 2.422' W  
Div S

057  
Ash Piles - Multiple Locations  
41° 24.127' N  
123° 2.800' W  
Div S

063  
Stump  
41° 24.694' N  
123° 2.065' W  
Div S

064  
Stove Pipes - Multiple Locations  
41° 24.840' N  
123° 0.891' W  
Div S

054  
Ash Piles - Multiple Locations  
41° 23.994' N  
123° 2.589' W  
Div S

052  
Stove Pipes - Multiple Locations  
41° 23.581' N  
123° 2.625' W  
Div S

048  
Creeping Fire  
41° 22.374' N  
123° 4.912' W  
Div T

Pipe  
630' N  
033' W

**DIV P**

**DIV S**

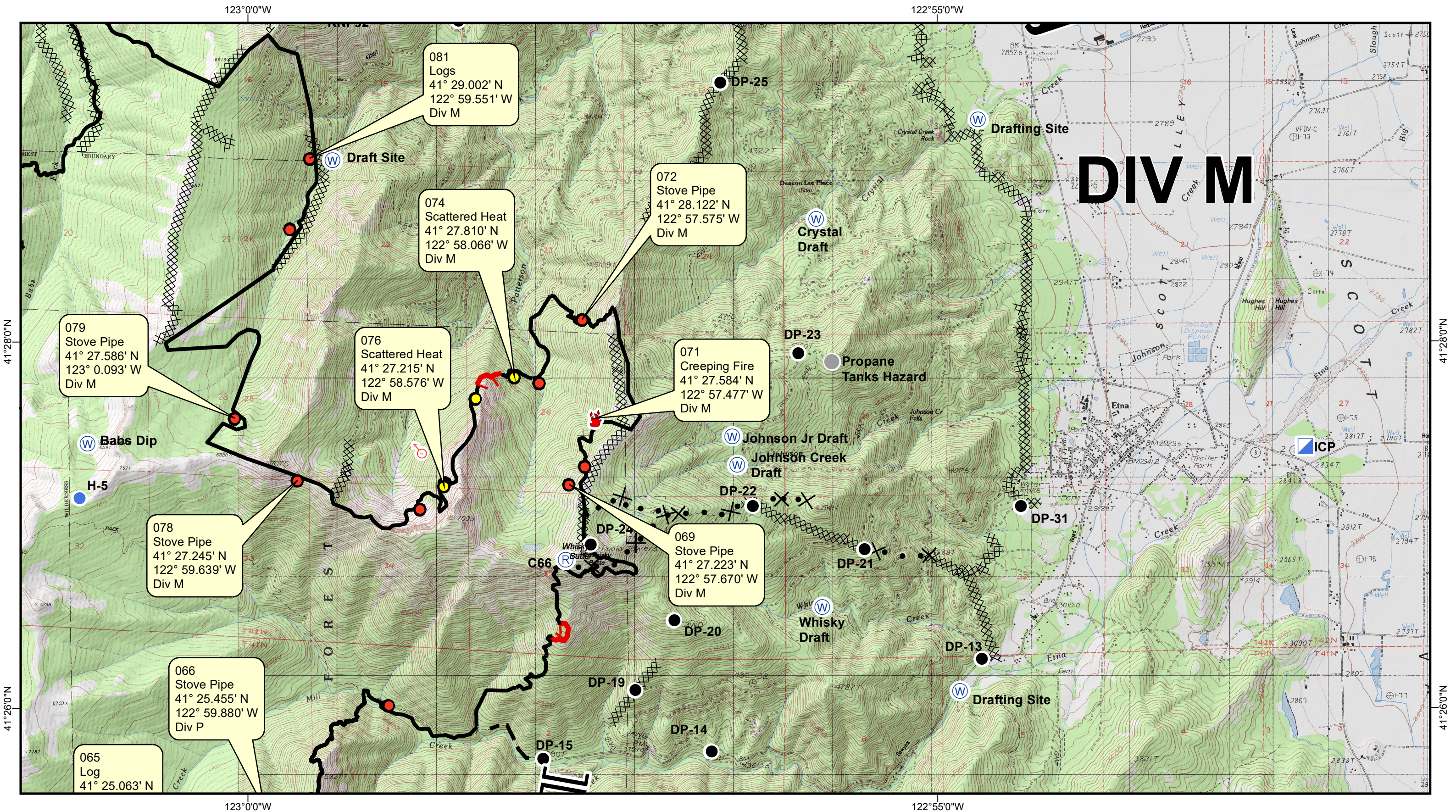
VETERAN'S EMERGENCY TECHNICAL SERVICES  
www/VETSresponse.com 805.218-9646  
**VETS**  
Cost Effective Infrared  
Setting the Standards Since 1980  
www.aspenhelo.com 805.985-5416  
**Aspen Helicopters**

- Hot Spot - Within 200' of the line (Heat above 200 degrees, Little Vegetation in Vicinity)
- Hot Spot - Within 200' of the line (Heat above 200 degrees, Unburned Vegetation in Vicinity)
- 🔥 Live Fire - Uncontained Spot Fire or Fire Front

**Salmon Complex**  
CA-KNF-006081  
0 0.25 0.5 1 1.5 2 Miles

**DIV S - WALLOW FIRE**  
Data Collected: 20170913 @ 1300

Sept. 13, 2017



# DIV M

079  
Stove Pipe  
41° 27.586' N  
123° 0.093' W  
Div M

074  
Scattered Heat  
41° 27.810' N  
122° 58.066' W  
Div M

072  
Stove Pipe  
41° 28.122' N  
122° 57.575' W  
Div M

076  
Scattered Heat  
41° 27.215' N  
122° 58.576' W  
Div M

071  
Creeping Fire  
41° 27.584' N  
122° 57.477' W  
Div M

078  
Stove Pipe  
41° 27.245' N  
122° 59.639' W  
Div M

069  
Stove Pipe  
41° 27.223' N  
122° 57.670' W  
Div M

065  
Log  
41° 25.063' N

066  
Stove Pipe  
41° 25.455' N  
122° 59.880' W  
Div P

www.VETSresponse.com  
805.218-9646

**VETS**  
VETERAN'S EMERGENCY TECHNICAL SERVICES  
Cost Effective Infrared

www.aspenhelo.com  
805.985-5416

Aspen Helicopters, Inc.  
Setting the Standards Since 1982

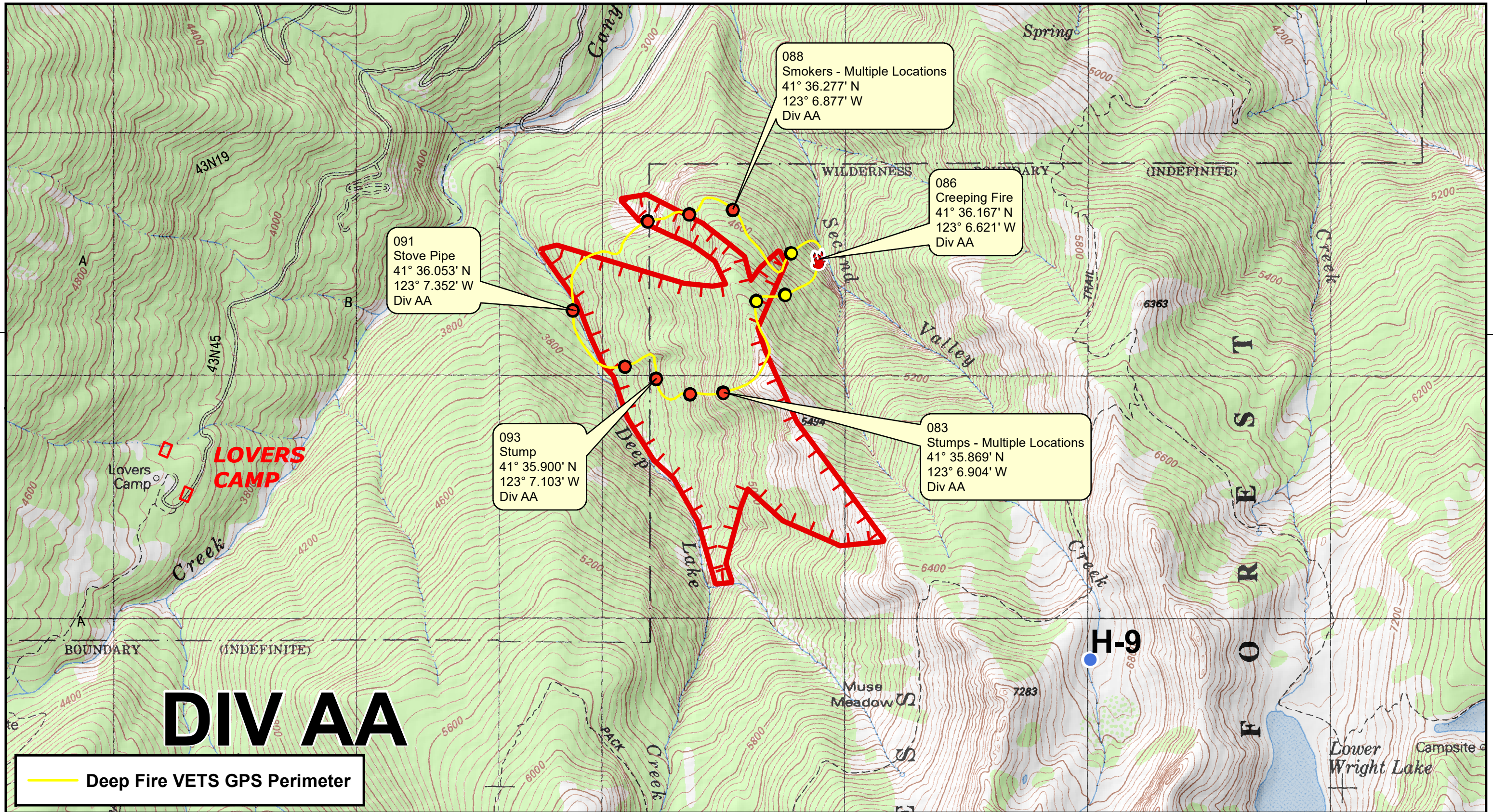
- Hot Spot - Within 200' of the line (Heat above 200 degrees, Little Vegetation in Vicinity)
- Hot Spot - Within 200' of the line (Heat above 200 degrees, Unburned Vegetation in Vicinity)
- 🔥 Live Fire - Uncontained Spot Fire or Fire Front

## Salmon Complex

### CA-KNF-006081

**DIV M - WALLOW FIRE**  
Data Collected: 20170913 @ 1300

Sept. 13, 2017



VETERAN'S EMERGENCY TECHNICAL SERVICES  
www.VETSresponse.com  
805.218-9646

**VETS**  
Cost Effective Infrared

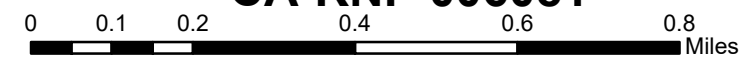
Setting the Standards Since 1982  
www.aspenhelo.com  
805.985-5416

**Aspen Helicopters**

- Hot Spot - Within 200' of the line (Heat above 200 degrees, Little Vegetation in Vicinity)
- Hot Spot - Within 200' of the line (Heat above 200 degrees, Unburned Vegetation in Vicinity)
- 🔥 Live Fire - Uncontained Spot Fire or Fire Front

# Salmon Complex

CA-KNF-006081



**DIV AA - DEEP FIRE**  
Data Collected: 20170913 @ 1300

Sept. 13, 2017

VETS IR Hotspots 20170913 @ 1300  
 Salmon Complex - Wallow Deep Fires

ident	Lon	Lat	IR_Type	Label	Division
001	123° 16.225' W	41° 20.227' N	Significant	Stump	Div V
002	123° 16.152' W	41° 20.459' N	Significant	Stove Pipe	Div V
003	123° 15.754' W	41° 20.599' N	Significant	Stumps - Multiple Locations	Div V
004	123° 15.453' W	41° 20.811' N	Significant	Stump	Div V
005	123° 15.246' W	41° 21.166' N	Open	Creeping Fire	Div V
006	123° 15.164' W	41° 21.242' N	Open	Creeping Fire	Div V
007	123° 14.449' W	41° 21.333' N	Significant	Stump	Div V
008	123° 14.361' W	41° 21.315' N	Significant	Trees - Multiple	Div V
009	123° 14.178' W	41° 21.654' N	Significant	Stump	Div V
010	123° 14.000' W	41° 21.714' N	Significant	Stump	Div V
011	123° 13.852' W	41° 21.786' N	Significant	Trees - Multiple Locations	Div V
012	123° 13.311' W	41° 21.508' N	Significant	Stove Pipes - Multiple Locations	Div V
013	123° 13.068' W	41° 21.437' N	Significant	Stove Pipes - Multiple Locations	Div V
014	123° 12.719' W	41° 21.611' N	Significant	Stove Pipes - Multiple Locations	Div V
015	123° 12.475' W	41° 21.517' N	Significant	Ash Field	Div V
016	123° 12.170' W	41° 21.612' N	Significant	Stove Pipes - Multiple Locations	Div V
017	123° 12.055' W	41° 21.670' N	Significant	Ash Field	Div V
018	123° 11.942' W	41° 21.759' N	Significant	Ash Field	Div V
019	123° 11.901' W	41° 21.827' N	Open	Creeping Fire	Div V
020	123° 11.275' W	41° 21.956' N	Moderate	Scattered Heat	Div V
021	123° 10.907' W	41° 21.492' N	Significant	Smoker	Div V
022	123° 10.943' W	41° 21.108' N	Significant	Stove Pipes - Multiple Locations	Div V
023	123° 10.578' W	41° 20.823' N	Significant	Stove Pipes - Multiple Locations	Div V
024	123° 10.107' W	41° 21.019' N	Significant	Stumps - Multiple Locations	Div T
025	123° 9.778' W	41° 21.142' N	Significant	Logs	Div T
026	123° 9.766' W	41° 21.059' N	Significant	Stumps - Multiple Locations	Div T
027	123° 9.417' W	41° 20.914' N	Significant	Stumps - Multiple Locations	Div T
028	123° 9.056' W	41° 20.905' N	Significant	Stove Pipes - Multiple Locations	Div T
029	123° 8.612' W	41° 20.885' N	Significant	Ash Field	Div T
030	123° 8.453' W	41° 20.854' N	Significant	Stove Pipes - Multiple Locations	Div T
031	123° 8.441' W	41° 21.013' N	Moderate	Scattered Heat	Div T
032	123° 8.504' W	41° 21.060' N	Significant	Logs	Div T
033	123° 8.555' W	41° 21.188' N	Significant	Ash Piles - Multiple Locations	Div T
034	123° 8.485' W	41° 21.307' N	Significant	Stumps - Multiple Locations	Div T
035	123° 8.391' W	41° 21.402' N	Open	Creeping Fire	Div T
036	123° 8.060' W	41° 21.331' N	Significant	Stove Pipes - Multiple Locations	Div T
037	123° 8.000' W	41° 21.285' N	Open	Creeping Fire	Div T
038	123° 7.908' W	41° 21.262' N	Significant	Ash Piles - Multiple Locations	Div T
039	123° 7.561' W	41° 21.031' N	Significant	Stove Pipe	Div T
040	123° 7.264' W	41° 20.915' N	Significant	Stove Pipe	Div T
041	123° 7.171' W	41° 20.943' N	Significant	Smokers - Multiple Locations	Div T
042	123° 7.052' W	41° 20.969' N	Open	Creeping Fire	Div T
043	123° 7.000' W	41° 21.021' N	Open	Creeping Fire	Div T
044	123° 6.183' W	41° 21.655' N	Significant	Ash Piles - Multiple Locations	Div T
045	123° 6.200' W	41° 21.982' N	Significant	Smokers - Multiple Locations	Div T
046	123° 5.112' W	41° 22.863' N	Significant	Stump	Div T
047	123° 5.033' W	41° 22.630' N	Significant	Stove Pipe	Div T
048	123° 4.912' W	41° 22.374' N	Open	Creeping Fire	Div T
049	123° 4.602' W	41° 22.081' N	Significant	Stove Pipes - Multiple Locations	Div T
050	123° 4.470' W	41° 21.644' N	Significant	Tree	Div T
051	123° 3.892' W	41° 21.573' N	Significant	Stove Pipes - Multiple Locations	Div S
052	123° 2.625' W	41° 23.581' N	Significant	Stove Pipes - Multiple Locations	Div S
053	123° 2.489' W	41° 23.812' N	Significant	Smokers - Multiple Locations	Div S
054	123° 2.589' W	41° 23.994' N	Significant	Ash Piles - Multiple Locations	Div S
055	123° 2.735' W	41° 24.044' N	Open	Creeping Fire	Div S
056	123° 2.774' W	41° 24.087' N	Significant	Ash Piles - Multiple Locations	Div S
057	123° 2.800' W	41° 24.127' N	Significant	Ash Piles - Multiple Locations	Div S
058	123° 2.773' W	41° 24.289' N	Open	Creeping Fire	Div S
059	123° 2.725' W	41° 24.306' N	Open	Active Fire	Div S
060	123° 2.579' W	41° 24.282' N	Open	Creeping Fire	Div S
061	123° 2.422' W	41° 24.271' N	Open	Creeping Fire	Div S
062	123° 2.256' W	41° 24.806' N	Significant	Stump	Div S
063	123° 2.065' W	41° 24.694' N	Significant	Stump	Div S
064	123° 0.891' W	41° 24.840' N	Significant	Stove Pipes - Multiple Locations	Div S
065	123° 0.250' W	41° 25.063' N	Significant	Log	Div S
066	122° 59.880' W	41° 25.455' N	Significant	Stove Pipe	Div P
067	122° 59.536' W	41° 25.511' N	Significant	Stove Pipe	Div P
068	122° 58.975' W	41° 26.021' N	Significant	Stove Pipe	Div P
069	122° 57.670' W	41° 27.223' N	Significant	Stove Pipe	Div M
070	122° 57.555' W	41° 27.322' N	Significant	Smokers - Multiple Locations	Div M
071	122° 57.477' W	41° 27.584' N	Open	Creeping Fire	Div M
072	122° 57.575' W	41° 28.122' N	Significant	Stove Pipe	Div M
073	122° 57.885' W	41° 27.779' N	Significant	Smokers - Multiple Locations	Div M






VETS IR Hotspots 20170913 @ 1300  
 Salmon Complex - Wallow Deep Fires

074	122° 58.066' W	41° 27.810' N	Moderate	Scattered Heat	Div M
075	122° 58.345' W	41° 27.693' N	Moderate	Scattered Heat	Div M
076	122° 58.576' W	41° 27.215' N	Moderate	Scattered Heat	Div M
077	122° 58.749' W	41° 27.090' N	Significant	Smokers - Multiple Locations	Div M
078	122° 59.639' W	41° 27.245' N	Significant	Stove Pipe	Div M
079	123° 0.093' W	41° 27.586' N	Significant	Stove Pipe	Div M
080	122° 59.694' W	41° 28.617' N	Significant	Stove Pipe	Div M
081	122° 59.551' W	41° 29.002' N	Significant	Logs	Div M
082	123° 7.003' W	41° 35.867' N	Significant	Stump	Div AA
083	123° 6.904' W	41° 35.869' N	Significant	Stumps - Multiple Locations	Div AA
084	123° 6.807' W	41° 36.074' N	Moderate	Scattered Heat	Div AA
085	123° 6.720' W	41° 36.087' N	Moderate	Scattered Heat	Div AA
086	123° 6.621' W	41° 36.167' N	Open	Creeping Fire	Div AA
087	123° 6.702' W	41° 36.181' N	Moderate	Scattered Heat	Div AA
088	123° 6.877' W	41° 36.277' N	Significant	Smokers - Multiple Locations	Div AA
089	123° 7.007' W	41° 36.267' N	Significant	Logs	Div AA
090	123° 7.128' W	41° 36.251' N	Significant	Logs	Div AA
091	123° 7.352' W	41° 36.053' N	Significant	Stove Pipe	Div AA
092	123° 7.196' W	41° 35.928' N	Significant	Stump	Div AA
093	123° 7.103' W	41° 35.900' N	Significant	Stump	Div AA



## INFRARED MAP LEGEND

-  Hot Spot - Moderate Priority (Possible Threat to Fireline)
-  Hot Spot - Significant Priority (Considerable Threat to Fireline)
-  Live Fire - Uncontained Spot Fire or Fire Front

GPS Coordinates are in Degrees & Decimal Minutes (DD° MM.mmmm')

Datum is WGS 84 (unless otherwise noted on map)

Ex. 34° 04.405  
 -118° 14.414

Date and Time is when the intelligence was gathered

Heat Sources are normally acquired within a 400 foot strip, 200 feet inside and 200 feet outside the fire line or fire front (wider strips are flown as necessary and are labeled on infrared map).

## LIMITS TO INFRARED AND GPS INFORMATION

Under the best conditions heat sources less than 4 to 6 inches in diameter are inconsistent.

Very Small Heat sources under heavy canopy or in large rock piles are difficult to verify.

Accuracy of GPS coordinates is within 50 feet, 90% of the time.

### Labeling Details:

