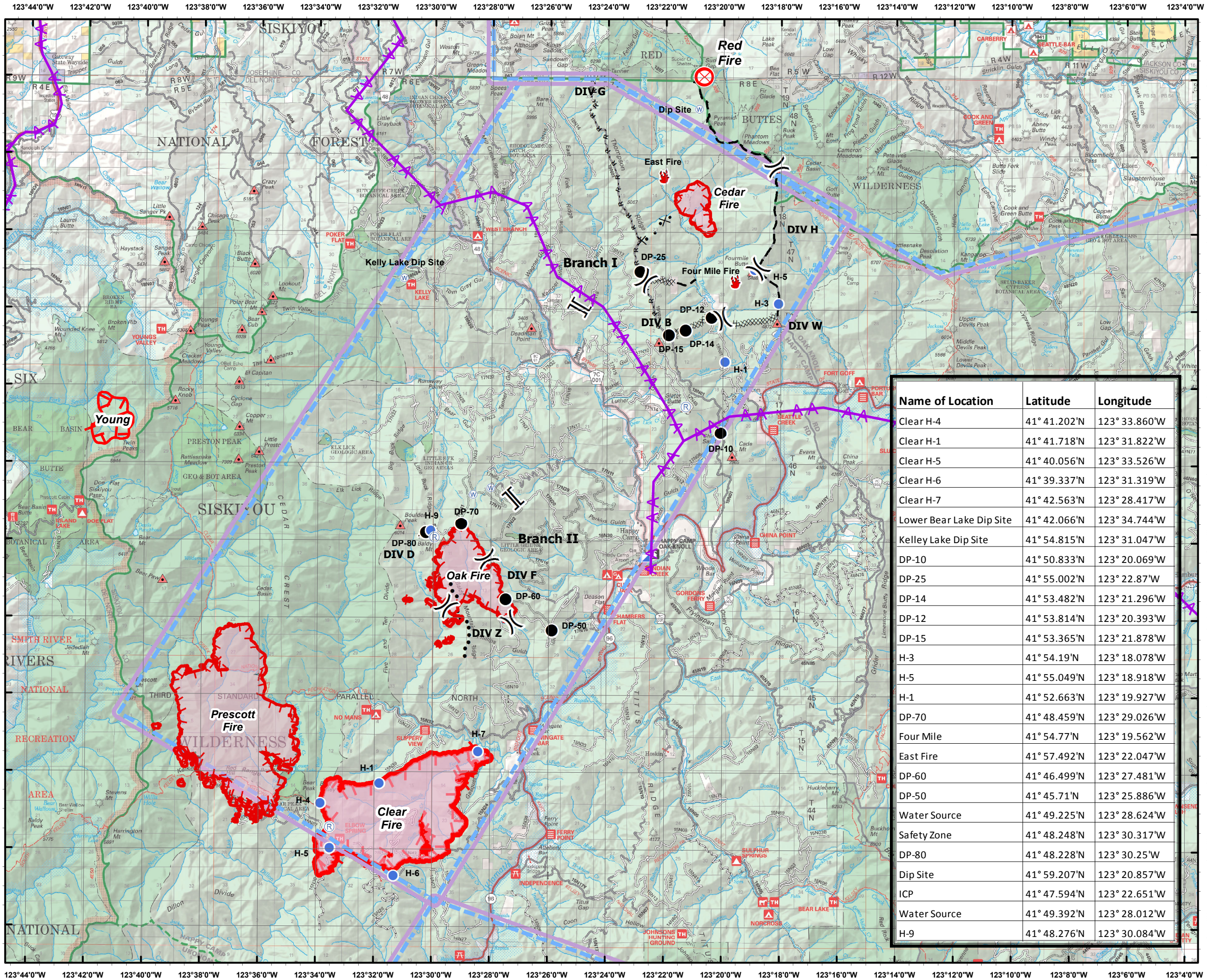


# ECLIPSE COMPLEX FIRE

CA-KNF-006098

## AIR OPS MAP

AUGUST 18, 2017



- Red Fire
- AviationObstacle\_Ln\_HSPGold\_2015
- TFR 8/17/2017
- Fire Polygon
- Division
- Branch
- Safety Zone
- Drop Point
- Fire Location
- Helispot
- Incident Command Post
- Repeater
- Water Source
- Uncontrolled Fire Edge
- Completed Dozer Line
- R - R - R Road as Completed Line
- Planned Fire Line
- Planned Secondary Line
- Proposed Dozer Line
- Summit\_GNIS

Name of Location	Latitude	Longitude
Clear H-4	41° 41.202'N	123° 33.860'W
Clear H-1	41° 41.718'N	123° 31.822'W
Clear H-5	41° 40.056'N	123° 33.526'W
Clear H-6	41° 39.337'N	123° 31.319'W
Clear H-7	41° 42.563'N	123° 28.417'W
Lower Bear Lake Dip Site	41° 42.066'N	123° 34.744'W
Kelley Lake Dip Site	41° 54.815'N	123° 31.047'W
DP-10	41° 50.833'N	123° 20.069'W
DP-14	41° 53.482'N	123° 21.296'W
DP-12	41° 53.814'N	123° 20.393'W
DP-15	41° 53.365'N	123° 21.878'W
H-3	41° 54.19'N	123° 18.078'W
H-5	41° 55.049'N	123° 18.918'W
H-1	41° 52.663'N	123° 19.927'W
DP-70	41° 48.459'N	123° 29.026'W
Four Mile	41° 54.77'N	123° 19.562'W
East Fire	41° 57.492'N	123° 22.047'W
DP-60	41° 46.499'N	123° 27.481'W
DP-50	41° 45.71'N	123° 25.886'W
Water Source	41° 49.225'N	123° 28.624'W
Safety Zone	41° 48.248'N	123° 30.317'W
DP-80	41° 48.228'N	123° 30.25'W
Dip Site	41° 59.207'N	123° 20.857'W
ICP	41° 47.594'N	123° 22.651'W
Water Source	41° 49.392'N	123° 28.012'W
H-9	41° 48.276'N	123° 30.084'W

