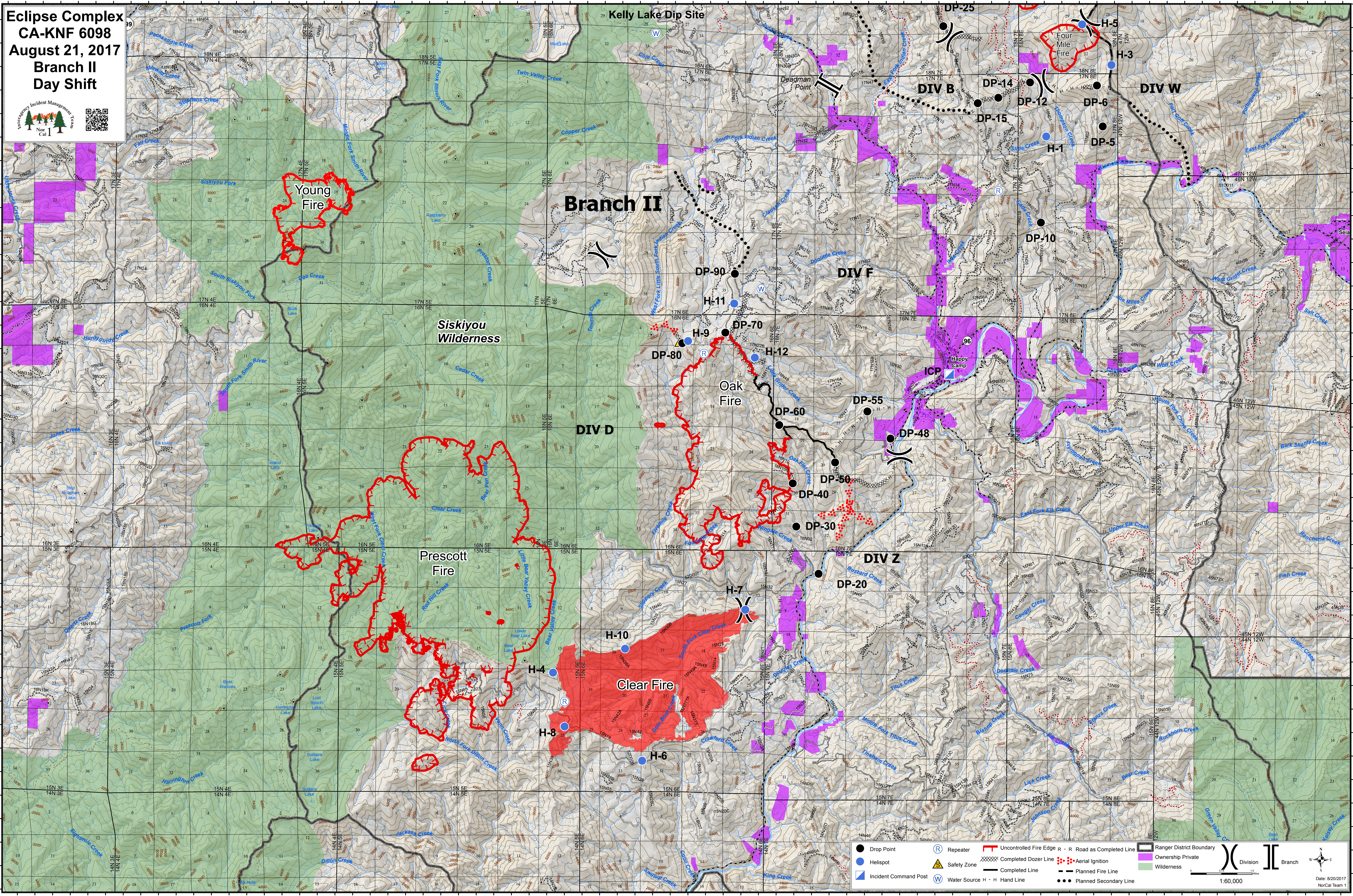


**Eclipse Complex
CA-KNF 6098
August 21, 2017
Branch II
Day Shift**



● Drop Point	Ⓡ Repeater	— Uncontrolled Fire Edge	— R - R Road as Completed Line	▭ Ranger District Boundary
● Helispot	⚠ Safety Zone	— Completed Dozer Line	— Aerial Ignition	▭ Ownership Private
▭ Incident Command Post	Ⓜ Water Source	— Completed Line	— Planned Fire Line	▭ Wilderness
		— H · H Hand Line	— Planned Secondary Line	

Scale: 1:60,000
Date: 8/20/2017
NorCal Team 1