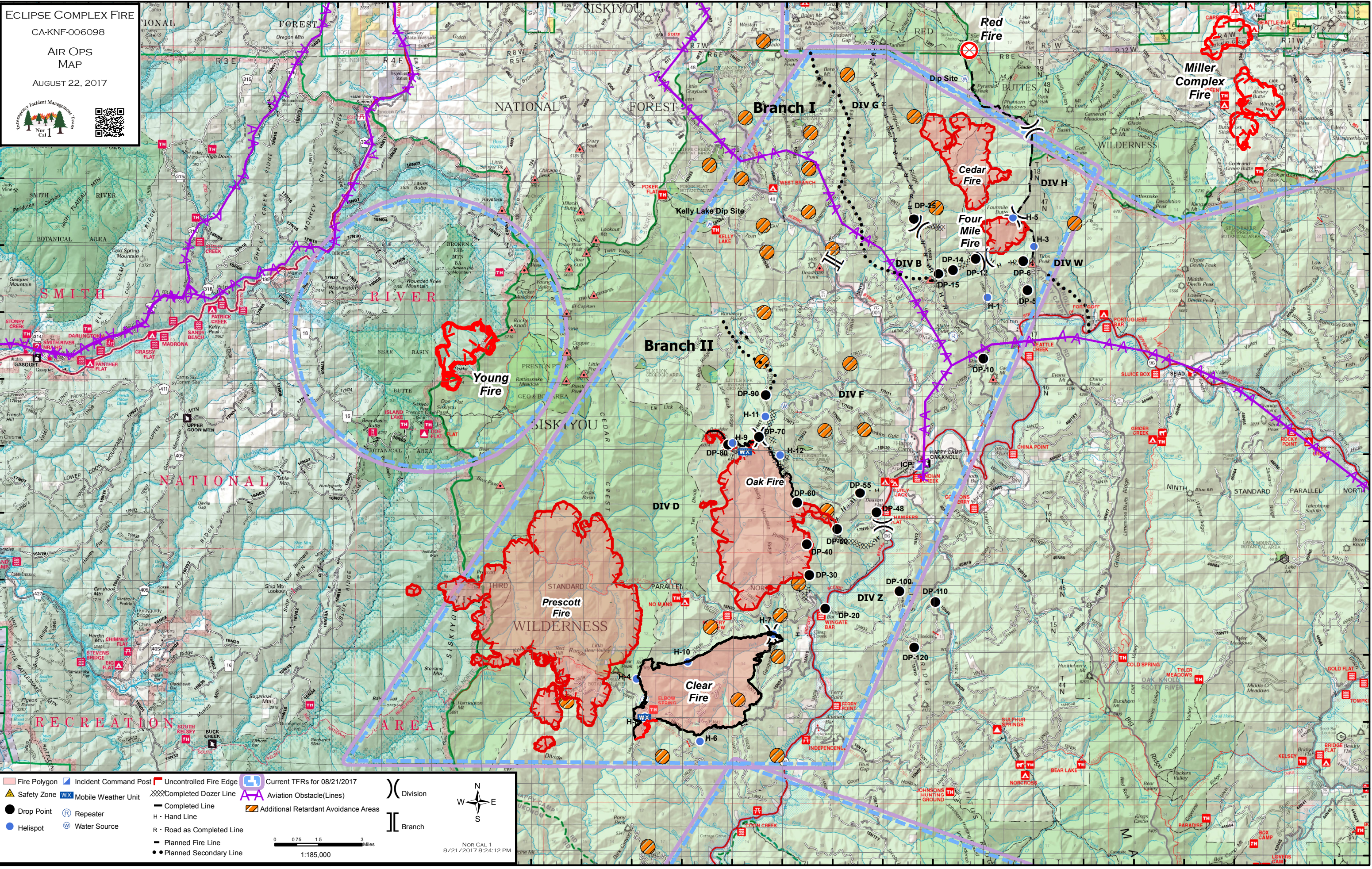


ECLIPSE COMPLEX FIRE
CA-KNF-006098
AIR OPS
MAP
AUGUST 22, 2017



Fire Polygon	Incident Command Post	Uncontrolled Fire Edge	Current TFRs for 08/21/2017	Completed Dozer Line	Aviation Obstacle(Lines)	Division
Safety Zone	Mobile Weather Unit	Completed Line	Additional Retardant Avoidance Areas	H - Hand Line	R - Road as Completed Line	Branch
Drop Point	Repeater	Planned Fire Line	Helispot	Water Source	Planned Secondary Line	

0 0.75 1.5 3 Miles
1:185,000
NOR CAL 1
8/21/2017 8:24:12 PM

Name of Location	Latitude	Longitude	Comment
H-1	41° 52.663'N	123° 19.927'W	Type 2 Roadside, Dust abate
H-3	41° 54.19'N	123° 18.078'W	Type 2 Razor Ridge , Dust abate
H-8	41° 55.049'N	123° 18.918'W	Type 3 Razor Ridge
H-9	41° 48.276'N	123° 30.084'W	Type 2 Roadside, Saddle, Dust abate
H-11	41° 49.078'N	123° 28.779'W	Type 2 Dust abate, oneway, 8500'
H-12	41° 47.929'N	123° 28.185'W	Type 3 Hover Hole, 4300'
Clear H-1	41° 41.718'N	123° 31.822'W	
Clear H-4	41° 41.202'N	123° 33.860'W	
Clear H-5	41° 40.056'N	123° 33.526'W	
Clear H-6	41° 39.337'N	123° 31.319'W	
Clear H-7	41° 42.563'N	123° 28.417'W	
DP-5	41° 52.882'N	123° 18.32'W	
DP-6	41° 53.751'N	123° 18.489'W	
DP-10	41° 50.833'N	123° 20.069'W	
DP-12	41° 53.814'N	123° 20.393'W	
DP-14	41° 53.482'N	123° 21.296'W	
DP-15	41° 53.365'N	123° 21.878'W	
DP-20	41° 43.336'N	123° 26.342'W	
DP-25	41° 55.002'N	123° 22.87'W	
DP-30	41° 44.339'N	123° 26.981'W	
DP-40	41° 45.258'N	123° 27.089'W	
DP-48	41° 46.223'N	123° 24.318'W	
DP-50	41° 45.71'N	123° 25.886'W	
DP-55	41° 46.795'N	123° 24.977'W	
DP-60	41° 46.499'N	123° 27.481'W	
DP-70	41° 48.459'N	123° 29.026'W	
DP-90	41° 49.71'N	123° 28.763'W	
DP-100	41° 43.863'N	123° 23.382'W	
DP-110	41° 43.553'N	123° 21.949'W	
DP-120	41° 42.184'N	123° 22.785'W	
East Fire	41° 57.492'N	123° 22.047'W	
Four Mile	41° 54.77'N	123° 19.562'W	
Happy Camp Airport	41° 47.441'N	123° 23.337'W	
ICP	41° 47.594'N	123° 22.651'W	
Kelley Lake Dip Site	41° 54.815'N	123° 31.047'W	
Lower Bear Lake Dip Site	41° 42.066'N	123° 34.744'W	
No Name Dip Site	41° 59.207'N	123° 20.857'W	
Bald Mtn RAWS	41° 48.023'N	123° 29.602'W	
KNF91 RAWS	41° 40.048'N	123° 33.547'W	