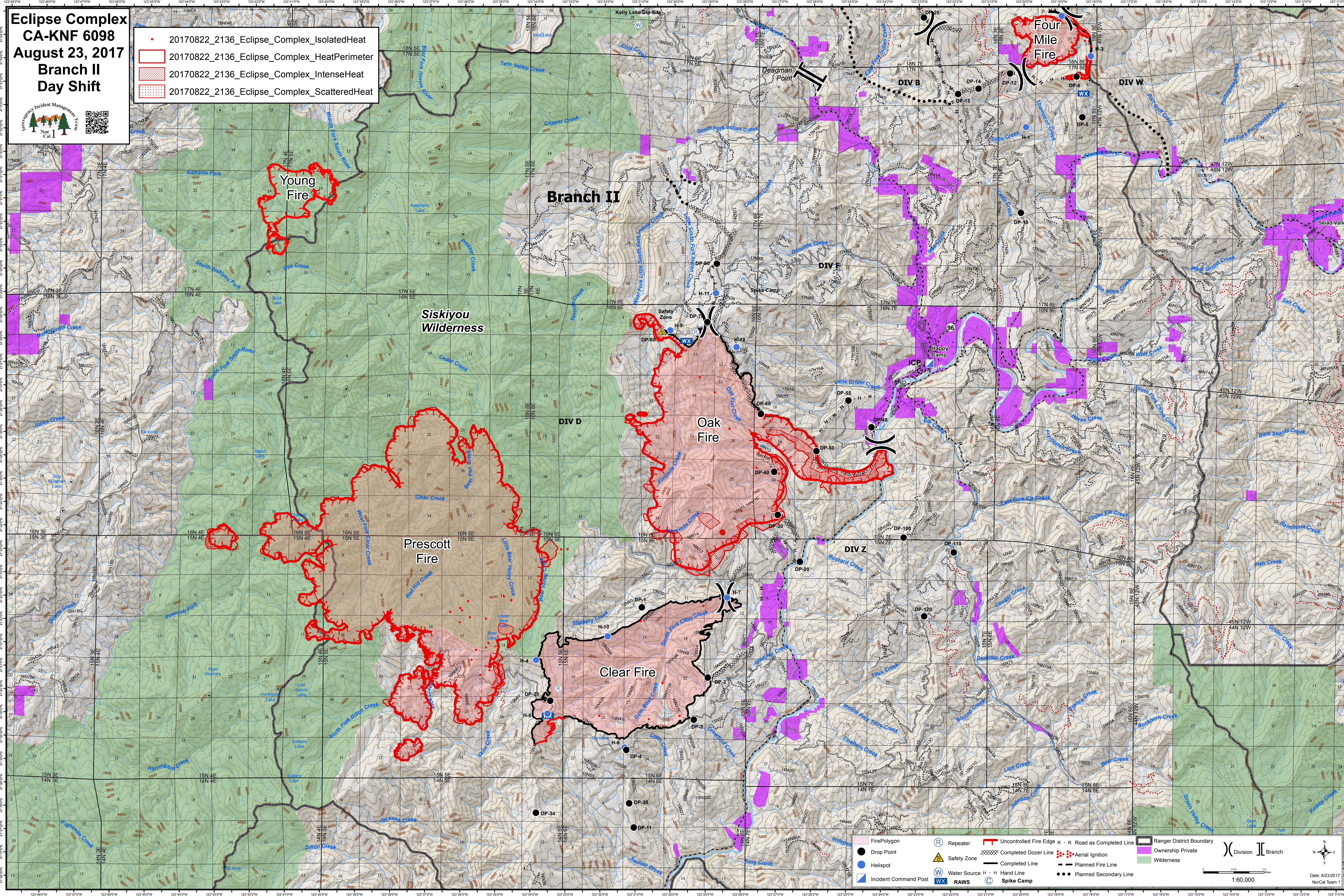


**Eclipse Complex  
CA-KNF 6098  
August 23, 2017  
Branch II  
Day Shift**

- 20170822\_2136\_Eclipse\_Complex\_IsolatedHeat
- ▭ 20170822\_2136\_Eclipse\_Complex\_HeatPerimeter
- ▨ 20170822\_2136\_Eclipse\_Complex\_IntenseHeat
- ▤ 20170822\_2136\_Eclipse\_Complex\_ScatteredHeat



▭ Fire Polygon	Ⓡ Repeater	▬ Uncontrolled Fire Edge R - R Road as Completed Line	▭ Ranger District Boundary
● Drop Point	⚠ Safety Zone	⊘ Completed Dozer Line	▭ Ownership Private
⊙ Helispot	Ⓜ Water Source	▬ Completed Line	▭ Wilderness
Ⓜ Incident Command Post	Ⓜ RAWS	▬ Planned Fire Line	Ⓜ Division II Branch
		⋯ Aerial Ignition	
		⋯ Planned Secondary Line	