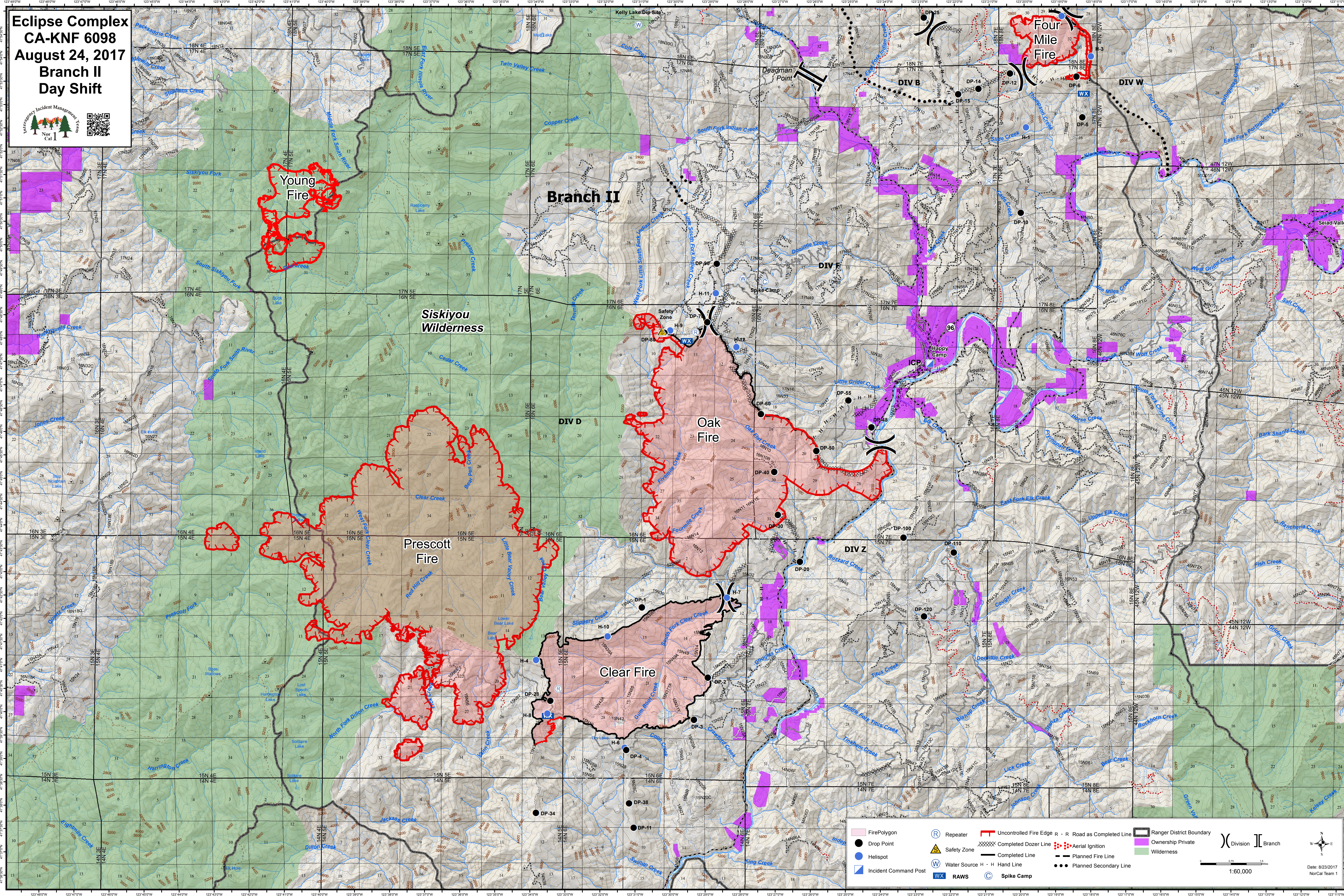


**Eclipse Complex
CA-KNF 6098
August 24, 2017
Branch II
Day Shift**



Fire Polygon	Repeater	Uncontrolled Fire Edge	Road as Completed Line	Ranger District Boundary
Drop Point	Safety Zone	Completed Dozer Line	Aerial Ignition	Ownership Private
Helispot	Water Source	Completed Line	Planned Fire Line	Wilderness
Incident Command Post	RAWS	Hand Line	Planned Secondary Line	Division
Spike Camp				Branch