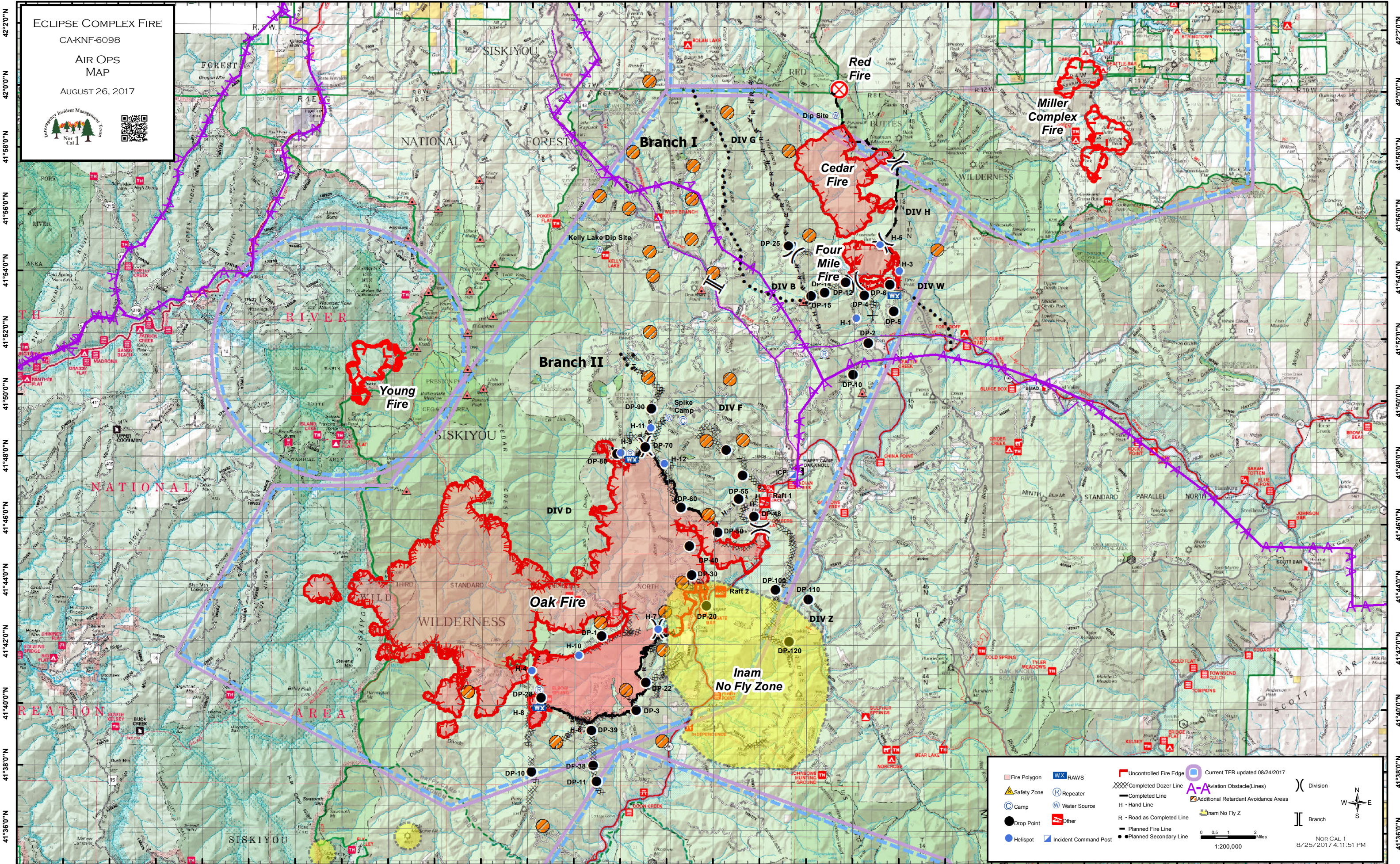


123°56'0"W 123°54'0"W 123°52'0"W 123°50'0"W 123°48'0"W 123°46'0"W 123°44'0"W 123°42'0"W 123°40'0"W 123°38'0"W 123°36'0"W 123°34'0"W 123°32'0"W 123°30'0"W 123°28'0"W 123°26'0"W 123°24'0"W 123°22'0"W 123°20'0"W 123°18'0"W 123°16'0"W 123°14'0"W 123°12'0"W 123°10'0"W 123°8'0"W 123°6'0"W 123°4'0"W 123°2'0"W 123°0'0"W 122°58'0"W



ECLIPSE COMPLEX FIRE
CA-KNF-6098
AIR OPS
MAP
AUGUST 26, 2017



Fire Polygon	RAWS	Uncontrolled Fire Edge	Current TFR updated 08/24/2017
Safety Zone	Repeater	Completed Dozer Line	Aviation Obstacle (Lines)
Camp	Water Source	Completed Line	Additional Retardant Avoidance Areas
Drop Point	Other	H - Hand Line	Inam No Fly Z
Helispot	Incident Command Post	R - Road as Completed Line	Division
		Planned Fire Line	Branch
		Planned Secondary Line	

0 0.5 1 2 Miles
1:200,000

NOR CAL 1
8/25/2017 4:11:51 PM

123°56'0"W 123°54'0"W 123°52'0"W 123°50'0"W 123°48'0"W 123°46'0"W 123°44'0"W 123°42'0"W 123°40'0"W 123°38'0"W 123°36'0"W 123°34'0"W 123°32'0"W 123°30'0"W 123°28'0"W 123°26'0"W 123°24'0"W 123°22'0"W 123°20'0"W 123°18'0"W 123°16'0"W 123°14'0"W 123°12'0"W 123°10'0"W 123°8'0"W 123°6'0"W 123°4'0"W 123°2'0"W 123°0'0"W 122°58'0"W

Name of Location	Latitude	Longitude	Comment
Bald Mtn RAWS	41° 48.023'N	123° 29.602'W	
KNF91 RAWS	41° 40.048'N	123° 33.547'W	
Raft 1	41° 46.657'N	123° 23.847'W	
Raft 2	41° 43.788'N	123° 25.747'W	
DP-1	41° 42.34'N	123° 30.853'W	
DP-2	41° 51.855'N	123° 19.397'W	
DP-3	41° 39.945'N	123° 29.347'W	
DP-4	41° 53.393'N	123° 19.575'W	
DP-5	41° 52.882'N	123° 18.32'W	
DP-6	41° 53.751'N	123° 18.489'W	
DP-10	41° 37.928'N	123° 33.838'W	
DP-12	41° 53.814'N	123° 20.393'W	
DP-14	41° 53.482'N	123° 21.296'W	
DP-15	41° 53.365'N	123° 21.878'W	
DP-20	41° 43.336'N	123° 26.342'W	
DP-22	41° 40.845'N	123° 28.955'W	
DP-25	41° 55.002'N	123° 22.87'W	
DP-28	41° 40.331'N	123° 33.451'W	
DP-30	41° 44.339'N	123° 26.981'W	
DP-34	41° 50.833'N	123° 20.069'W	
DP-38	41° 38.143'N	123° 31.179'W	
DP-39	41° 39.285'N	123° 31.269'W	
DP-40	41° 45.258'N	123° 27.089'W	
DP-48	41° 46.223'N	123° 24.318'W	
DP-50	41° 45.71'N	123° 25.886'W	
DP-55	41° 46.795'N	123° 24.977'W	
DP-57	41° 47.557'N	123° 24.804'W	
DP-60	41° 46.499'N	123° 27.481'W	
DP-62	41° 48.38'N	123° 25.521'W	
DP-70	41° 48.459'N	123° 29.026'W	
DP-80	41° 48.228'N	123° 30.25'W	
DP-90	41° 49.71'N	123° 28.763'W	
DP-100	41° 43.863'N	123° 23.382'W	
DP-110	41° 43.553'N	123° 21.949'W	
DP-120	41° 42.184'N	123° 22.785'W	
East Fire	41° 57.492'N	123° 22.047'W	
Four Mile	41° 54.77'N	123° 19.562'W	
H-1	41° 52.663'N	123° 19.927'W	Type 2 Roadside, Dust abate
H-3	41° 54.19'N	123° 18.078'W	Type 2 Razor Ridge , Dust abate
H-4	41° 41.202'N	123° 33.860'W	
H-5	41° 55.049'N	123° 18.918'W	Type 3 Razor Ridge
H-6	41° 39.337'N	123° 31.319'W	
H-7	41° 42.563'N	123° 28.417'W	
H-8	41° 40.056'N	123° 33.526'W	
H-9	41° 48.276'N	123° 30.084'W	Type 2 Roadside, Saddle, Dust abate
H-11	41° 49.078'N	123° 28.779'W	Type 2 Dust abate, oneway, 8500'
H-12	41° 47.929'N	123° 28.185'W	Type 3 Hover Hole, 4300'
Happy Camp Airport	41° 47.441'N	123° 23.337'W	
ICP	41° 47.594'N	123° 22.651'W	
Kelley Lake Dip Site	41° 54.815'N	123° 31.047'W	
Lower Bear Lake Dip Site	41° 42.066'N	123° 34.744'W	
No Name Dip Site	41° 59.207'N	123° 20.857'W	
Tim's Peak RAWS	41° 53.385'N	123° 18.283'W	